

**INSTRUMENT APPROACH CHART - ICAO**

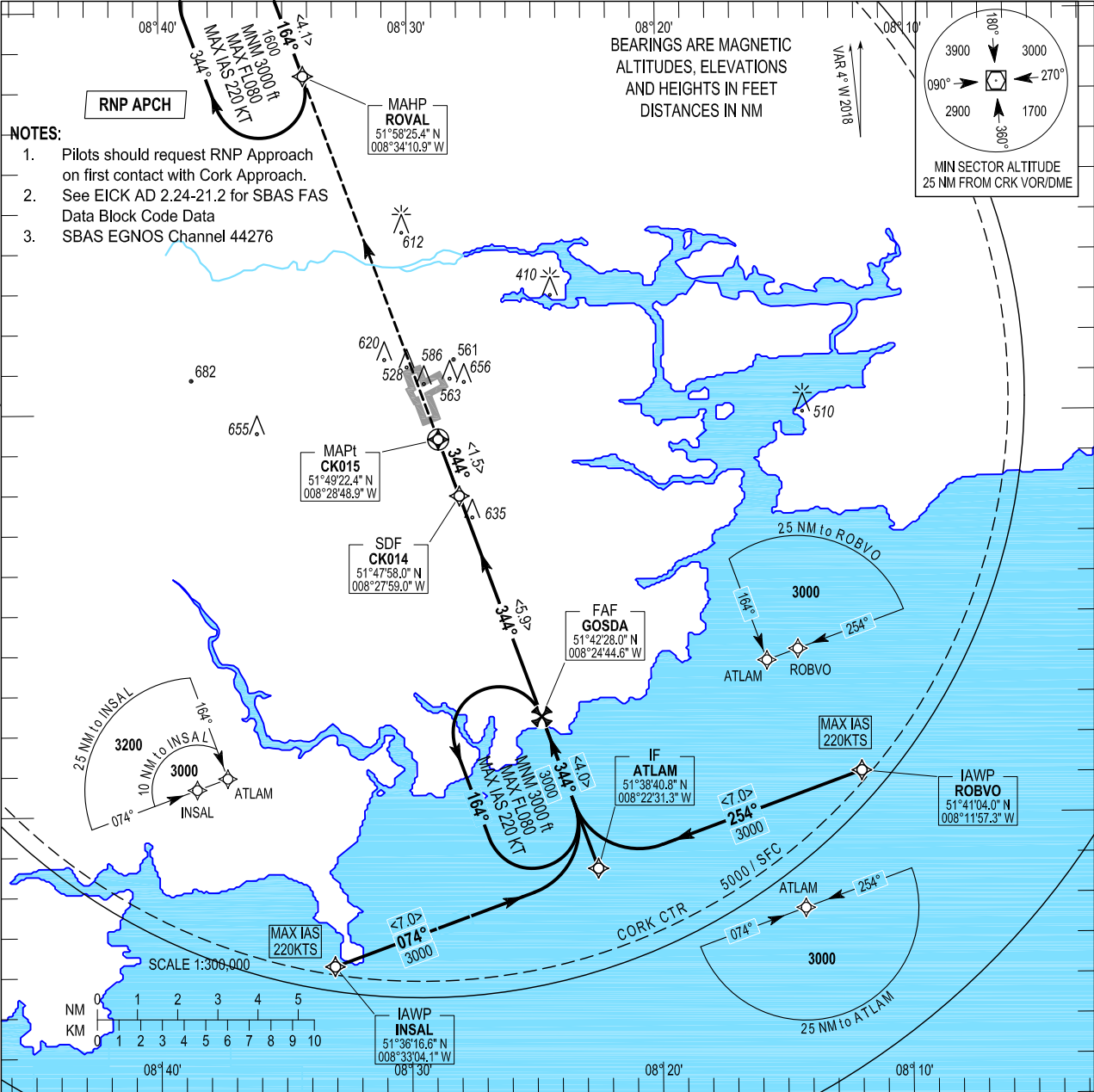
SBAS  
CH 44276  
E34A

**AERODROME ELEV 502 ft**  
HEIGHTS RELATED TO THR  
RWY 34 - ELEV 461 ft

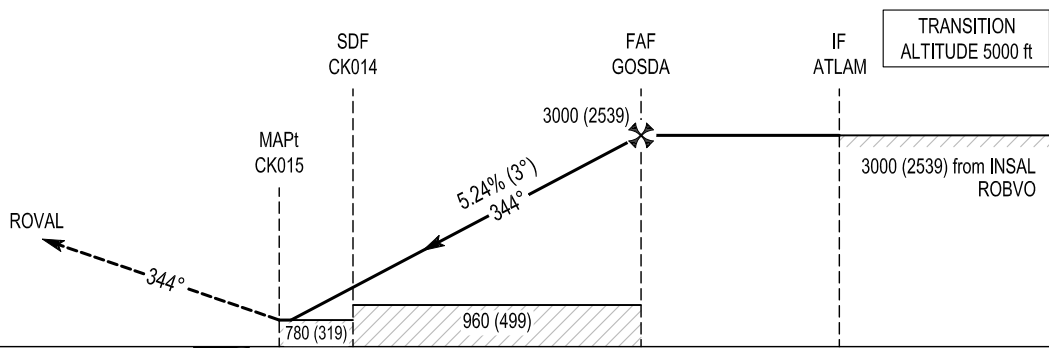
TWR 119.300  
GND 121.850  
ATIS 120.925  
CRK APP 119.900

CONSULT NOTAM  
FOR LATEST  
INFORMATION

**CORK / CORK**  
RNP RWY 34  
(ACFT CAT A, B, C, D)  
MNM TEMP -10°C (BARO VNAV)  
MAX TEMP 30°C (BARO VNAV)



**MISSED APPROACH:**  
Climb straight ahead to 4000ft to enter the ROVAL hold.  
6.6% (400ft/NM) for airspace,  
2.5% for obstacle clearance.  
Or as directed by ATC.



**RDH 54**  
ELEV 461 ft (THR RWY 34)

	6	5	4	3	2	1	0	1	2	3	4	5	6	7	8	9	10	11	12	13	14	15	
OCA (H)	A	B	C	D	Recommended Profile on Final Approach																		
LNAV	780 (319)				THR RWY 34	1	2	3	4	5	6	7											
LNAV / VNAV	690 (229)	700 (239)	720 (259)	730 (269)	ALT (HT)	835 (374)	1150 (689)	1470 (1009)	1780 (1319)	2105 (1644)	2425 (1964)	2745 (2284)											
LPV	717 (256)	727 (266)	737 (276)	747 (286)	Descent Rate 5.24% (3°), 318 ft/NM								Kts	80	100	120	140	160					
VISUAL MANOEUVRING (These heights are AAL)	960 (458)	1000 (498)	1100 (598)	1200 (698)									ft / min	425	530	640	745	850					

11 OCT 2018

**CORK RNAV (GNSS) RWY 34 VIA ROBVO**

Navigational performance	Path descriptor	WPT Name	Latitude (N) / Longitude (W)	Fly-By or Fly-Over	Distance (nm)	True track / Magnetic track	Upper limit / Lower limit	Speed limit (kts)	VPA / TCH	Remarks
RNP APCH	IF	ROBVO	514104.0 / 0081157.3	Fly-By	-	-	- / FL060	220	-	IAF
RNP APCH	TF	ATLAM	513840.8 / 0082231.3	Fly-By	7.0	250.1 / 254	- / 3000	210	-	IF
RNP APCH	TF	GOSDA	514228.0 / 0082444.6	Fly-By	4.0	340.0 / 344	-	210	-	FAF
RNP APCH	TF	CK014	514758.0 / 0082759.0	Fly-By	5.9	339.9 / 344	-	210	-	SDF
RNP APCH	TF	CK015	514922.4 / 0082848.9	Fly-Over	1.5	339.9 / 344	-	-	3 / 54	MAPt
RNP APCH	TF	ROVAL	515825.4 / 0083410.9	Fly-By	9.7	339.9 / 344	-	220	-	MAHP
RNAV 1	HM	ROVAL	515825.4 / 0083410.9	Fly-By	-	159.8 / 164	- / 4000	220	-	R

**CORK RNAV (GNSS) RWY 34 VIA INSAL**

Navigational performance	Path descriptor	WPT Name	Latitude (N) / Longitude (W)	Fly-By or Fly-Over	Distance (nm)	True track / Magnetic track	Upper limit / Lower limit	Speed limit (kts)	VPA / TCH	Remarks
RNP APCH	IF	INSAL	513616.6 / 0083304.1	Fly-By	-	-	- / FL060	220	-	IAF
RNP APCH	TF	ATLAM	513840.8 / 0082231.3	Fly-By	7.0	069.8 / 074	- / 3000	210	-	IF
RNP APCH	TF	GOSDA	514228.0 / 0082444.6	Fly-By	4.0	340.0 / 344	-	210	-	FAF
RNP APCH	TF	CK014	514758.0 / 0082759.0	Fly-By	5.9	339.9 / 344	-	210	-	SDF
RNP APCH	TF	CK015	514922.4 / 0082848.9	Fly-Over	1.5	339.9 / 344	-	-	3 / 54	MAPt
RNP APCH	TF	ROVAL	515825.4 / 0083410.9	Fly-By	9.7	339.9 / 344	-	220	-	MAHP
RNAV 1	HM	ROVAL	515825.4 / 0083410.9	Fly-By	-	159.8 / 164	- / 4000	220	-	R

**Hold Identification – EICK AD 2.24-21**

Holding Fix	Latitude (N) / Longitude (W)	Inbound True Track (degrees)	Inbound Mag Track (degrees)	Maximum Indicated Airspeed (kts)	Maximum / Minimum Holding Level / Altitude (FL/ft)	Outbound time (min)	Direction of Turn
GOSDA	514228.0 / 0082444.6	340.0	344	220	FL080 / 3000	1	L
ROVAL	515825.4 / 0083410.9	159.8	164	220	FL080 / 3000	1	R

**SBAS FAS Data Block Coding Data  
Cork RNAV (GNSS) RWY 34**

Input Data	
Parameters	Values
Operation Type	0
SBAS Provider	1
Airport Identifier	EICK
Runway	34
Runway Direction	0
Approach Performance Designator	0
Route Indicator	
Reference Path Data Selector	0
Reference Path Identifier	E34A
LTP/FTP Latitude	514956.1605N
LTP/FTP Longitude	0082908.8395W
LTP/FTP Ellipsoidal Height (metres)	197.6
FPAP Latitude	515100.9730N
Delta FPAP Latitude (seconds)	64.8125
FPAP Longitude	0082947.1780W
Delta FPAP Longitude (seconds)	-38.3385
Threshold Crossing Height (feet)	54.0
TCH Units Selector	0
Glidepath Angle (degrees)	3.00
Course Width (metres)	105.00
Length Offset (metres)	0
HAL (metres)	40.0
VAL (metres)	50.0

Output Data	
Data Block	10 0B 03 09 05 22 00 00 01 34 33 05 81 76 3E 16 31 B9 5B FC B8 1B 59 FA 01 7B D4 FE 1C 02 2C 01 64 00 C8 FA DD 8C A3 7C
Calculated CRC Value	DD8CA37C

Required Additional Data (not CRC wrapped)	
Parameters	Values
ICAO Code	EI
LTP/FTP Orthometric Height (metres)	140.2
FPAP Orthometric Height (metres)	145.4
SBAS EGNOS Channel	44276