

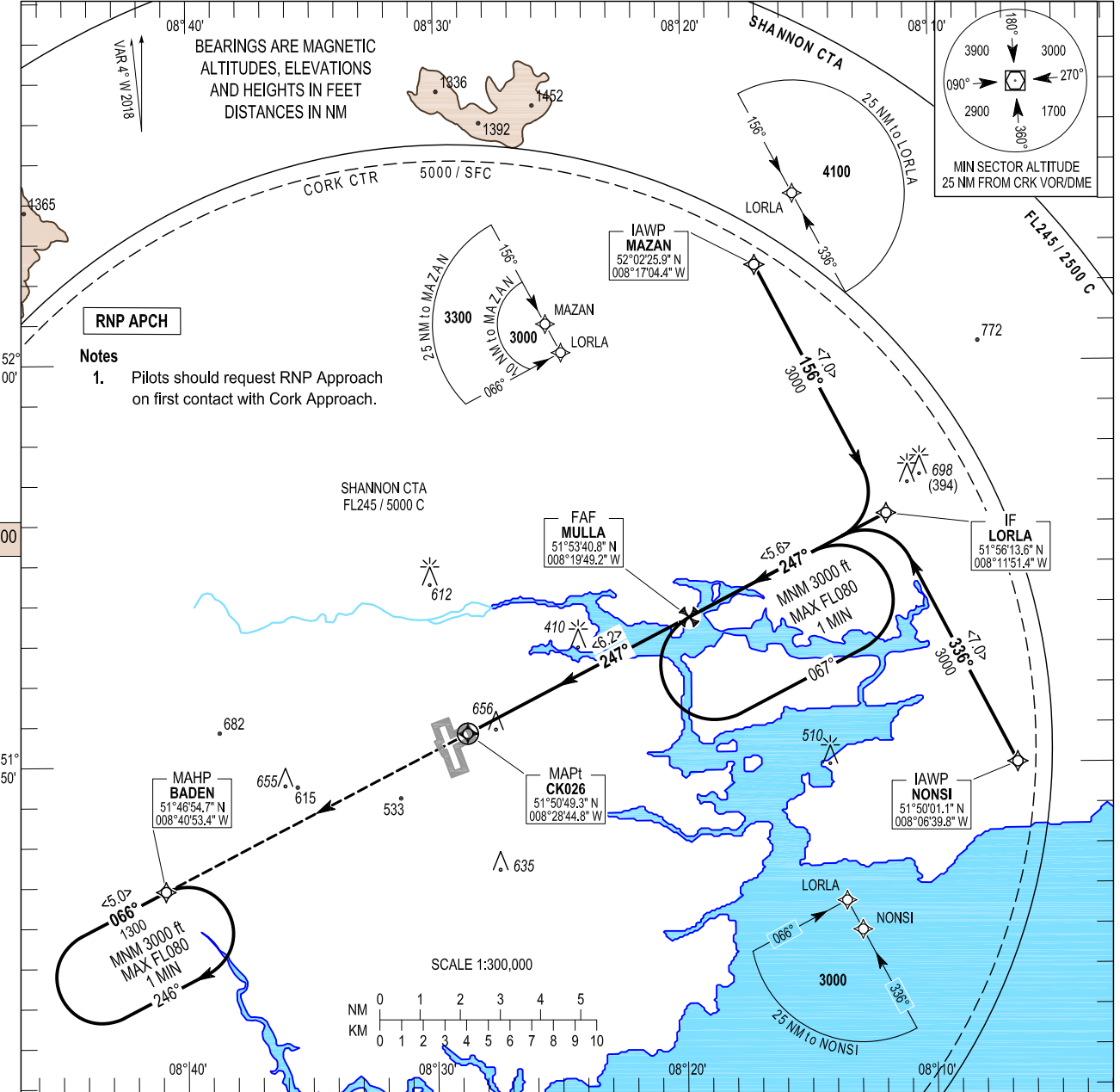
INSTRUMENT APPROACH CHART- ICAO

AERODROME ELEV 502 ft
 HEIGHTS RELATED TO THR
 RWY 25 - ELEV 502 ft

TWR 119.300
 GND 121.850
 ATIS 120.925
 CRK APP 119.900

CONSULT NOTAM FOR LATEST INFORMATION

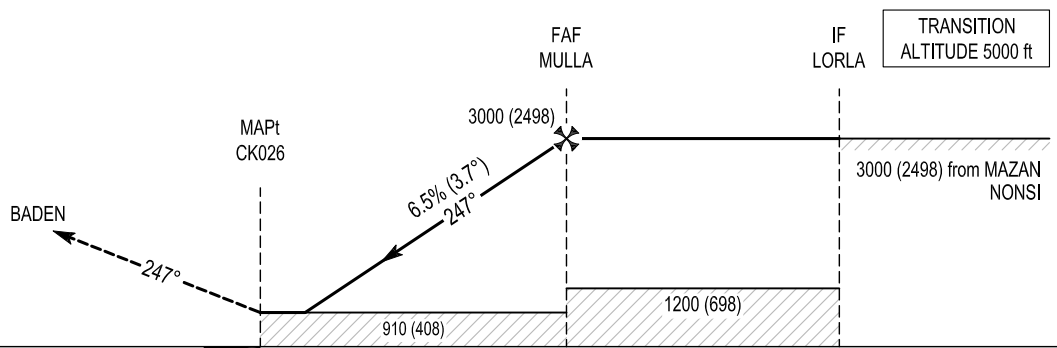
CORK / CORK
RNP RWY 25 (LNAV Only)
 (ACFT CAT A, B)
 MNM TEMP -10°C (BARO VNAV)
 MAX TEMP 22°C (BARO VNAV)



Notes
 1. Pilots should request RNP Approach on first contact with Cork Approach.

Change: Chart title and missed approach IAS increased to 220kts

MISSED APPROACH:
 Climb straight ahead to 4000ft to enter the BADEN hold.
 6.6% (400ft/NM) for airspace,
 2.5% for obstacle clearance.
 Or as directed by ATC.



RDH 50
 ELEV 502 ft (THR RWY 25)

NM FROM THR RWY 25 5 4 3 2 1 0 1 2 3 4 5 6 7 8 9 10 11 12 13 14 15

| | | | | | | | | | |
|--|-----------|------------|---------------------------------------|-----------|------------|-------------|-------------|-------------|-------------|
| OCA (H) | A | B | Recommended Profile on Final Approach | | | | | | |
| LNAV | 910 (408) | | THR RWY 25 | 1 | 2 | 3 | 4 | 5 | 6 |
| VISUAL MANOEUVRING (These heights are AAL) | 960 (458) | 1000 (498) | ALT (HT) | 945 (443) | 1340 (838) | 1735 (1233) | 2130 (1628) | 2525 (2023) | 2920 (2418) |
| | | | Descent Rate 6.5%, (3.7°), 395 ft/NM | Kts | 80 | 100 | 120 | 140 | 160 |
| | | | | ft / min | 525 | 660 | 790 | 920 | 1055 |

CORK RNAV (GNSS) RWY 25 VIA MAZAN

| Navigational performance | Path descriptor | WPT Name | Latitude (N) / Longitude (W) | Fly-By or Fly-Over | Distance (nm) | True track / Magnetic track | Upper limit / Lower limit | Speed limit (kts) | VPA / TCH | Remarks |
|--------------------------|-----------------|----------|------------------------------|--------------------|---------------|-----------------------------|---------------------------|-------------------|-----------|---------|
| RNP APCH | IF | MAZAN | 520225.9 / 0081704.4 | Fly-By | - | - | - / FL060 | 220 | - | IAF |
| RNP APCH | TF | LORLA | 515613.6 / 0081151.4 | Fly-By | 7.0 | 152.5 / 156 | - / 3000 | 220 | - | IF |
| RNP APCH | TF | MULLA | 515340.8 / 0081949.2 | Fly-By | 5.6 | 242.7 / 247 | - / 3000 | - | - | FAF |
| RNP APCH | TF | CK026 | 515049.3 / 0082844.8 | Fly-Over | 6.8 | 242.7 / 247 | - | - | 3.7 / 50 | MAPt |
| RNP APCH | TF | BADEN | 514654.7 / 0084053.4 | Fly-By | 8.5 | 242.6 / 246 | - | 220 | - | MAHP |

CORK RNAV (GNSS) RWY 25 VIA NONSI

| Navigational performance | Path descriptor | WPT Name | Latitude (N) / Longitude (W) | Fly-By or Fly-Over | Distance (nm) | True track / Magnetic track | Upper limit / Lower limit | Speed limit (kts) | VPA / TCH | Remarks |
|--------------------------|-----------------|----------|------------------------------|--------------------|---------------|-----------------------------|---------------------------|-------------------|-----------|---------|
| RNP APCH | IF | NONSI | 515001.1 / 0080639.8 | Fly-By | - | - | - / FL060 | 220 | - | IAF |
| RNP APCH | TF | LORLA | 515613.6 / 0081151.4 | Fly-By | 7.0 | 152.5 / 156 | - / 3000 | 220 | - | IF |
| RNP APCH | TF | MULLA | 515340.8 / 0081949.2 | Fly-By | 5.6 | 242.7 / 247 | - / 3000 | - | - | FAF |
| RNP APCH | TF | CK026 | 515049.3 / 0082844.8 | Fly-Over | 6.8 | 242.7 / 247 | - | - | 3.7 / 50 | MAPt |
| RNP APCH | TF | BADEN | 514654.7 / 0084053.4 | Fly-By | 8.5 | 242.6 / 246 | - | 220 | - | MAHP |

Hold Identification – EICK AD 2.24-26

| Holding Fix | Latitude (N) / Longitude (W) | Inbound True Track (degrees) | Inbound Mag Track (degrees) | Maximum Indicated Airspeed (kts) | Maximum /Minimum Holding Altitude/ Level (FL/FT) | Outbound Time (min) | Direction of Turn |
|-------------|------------------------------|------------------------------|-----------------------------|----------------------------------|--|---------------------|-------------------|
| BADEN | 514654.7 / 0084053.4 | 062.4 | 066 | 220 | FL080/3000 | 1 | R |
| MULLA | 515340.8 / 0081949.2 | 242.7 | 247 | 220 | FL080/3000 | 1 | L |