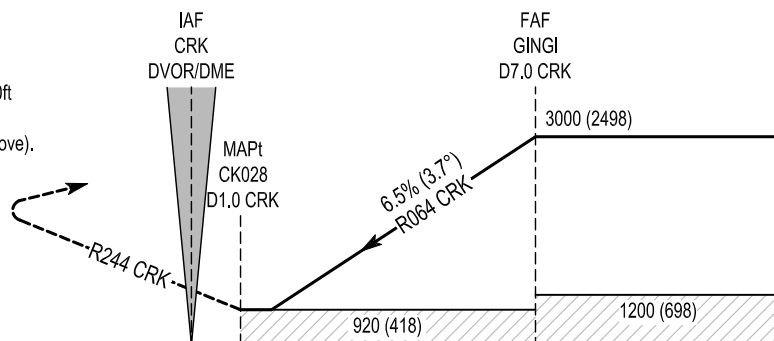


MISSED APPROACH:
Climb straight ahead to CK032 climbing to 4000ft. Turn right to CRK DVOR/DME maintaining 4000ft to initiate another approach or as directed by ATC (See note 6 above).



	5 4 3 2 1 0 1 2 3 4 5 6 7 8 9 10 11 12 13 14																			
OCA (H)	A			B											Recommended Profile on Final Approach					
STRAIGHT - IN APPROACH	920 (418)				CRK DME					6	5	4	3	2						
					ALT (HT)					2645 (2143)	2250 (1748)	1855 (1353)	1465 (963)	1070 (568)						
VISUAL MANOEUVRING (These heights are AAL)	960 (458)	1000 (498)	1100 (598)	1200 (698)	Descent Rate 6.5%, (3.7%), 393 ft/NM					Kts	80	100	120	140	160					
					ft / min					525	655	790	920	1050						

11 OCT 2018

RWY 25 VOR Approach

Descent Angle:	6.5%			
Fix	FAF GINGI	MAPt CK028	MATP CK032	IAF CRK
Fix Coordinates	515356.9N 0081953.5W	515056.4N 0082815.7W	514624.3N 0084047.3W	515026.2N 0082939.4W
Fix Formation Bearing ° T	059.78 CRK	059.78 CRK	239.78 CRK	
Fix Formation Distances	7.00 CRK	1.00 CRK	8.00 CRK	

Holding Identification - EICK AD 2.24-27

<i>Holding Fix</i>	<i>Latitude (N) / Longitude (W)</i>	<i>Inbound True Track (degrees)</i>	<i>Inbound Magnetic Track (degrees)</i>	<i>Maximum Indicated Airspeed (kts)</i>	<i>Minimum / Maximum Holding Level / Altitude (FL/ft)</i>	<i>Limiting outbound distance (NM)</i>	<i>Direction of Turn</i>
GINGI	515356.9N / 0081953.5W	240.0	244	220	3000ft / FL080	D11 CRK	L