

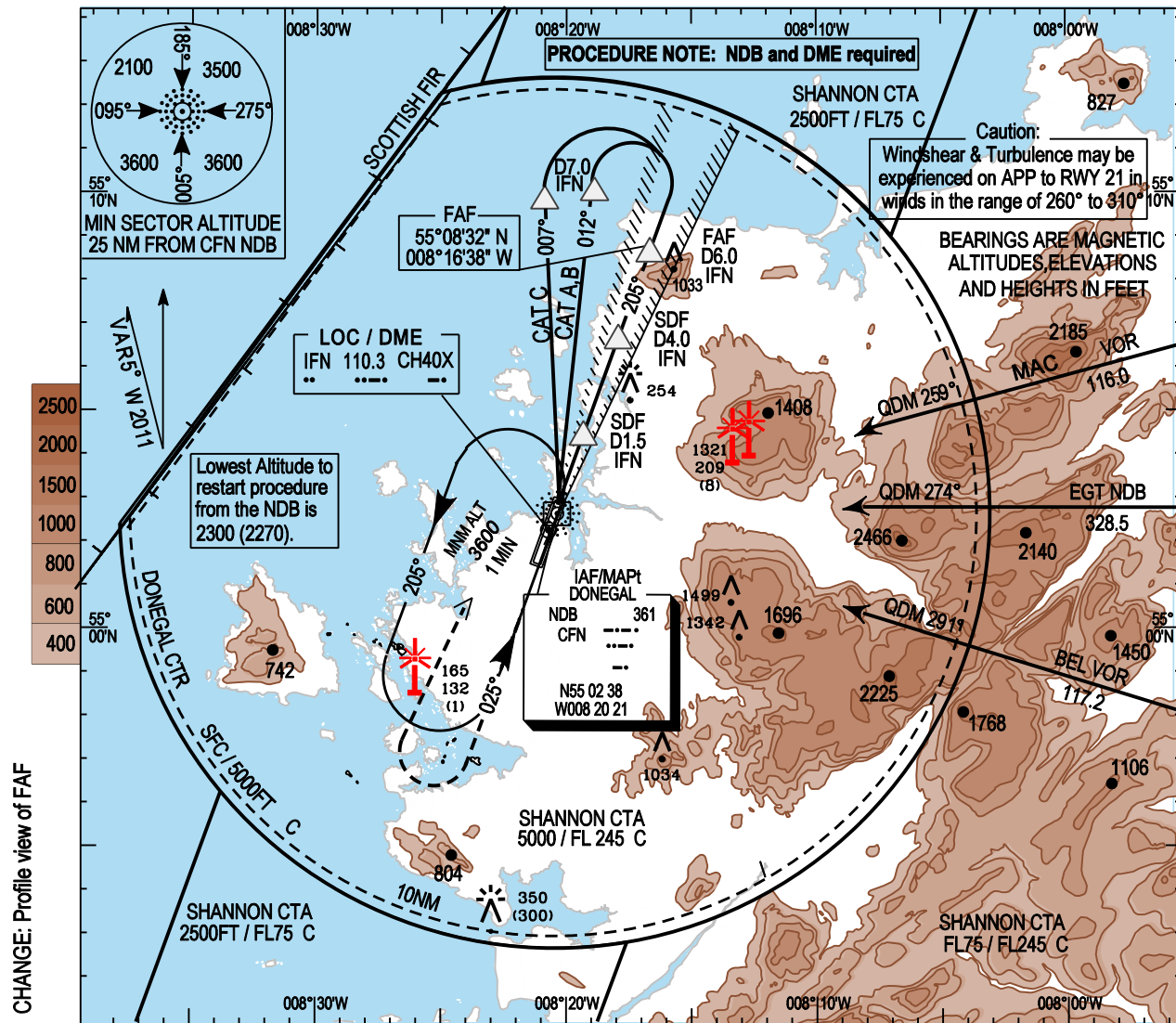
INSTRUMENT APPROACH CHART - ICAO

AERODROME ELEV 30 ft
HEIGHTS RELATED TO THR
RWY 21 - ELEV 30ft

TOWER 129.8
GND 129.8
ATIS 129.925

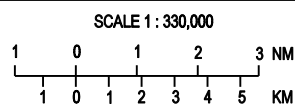
CONSULT NOTAM
FOR LATEST
INFORMATION

DONEGAL/DONEGAL
LOC RWY 21
(ACFT CAT A,B,C)



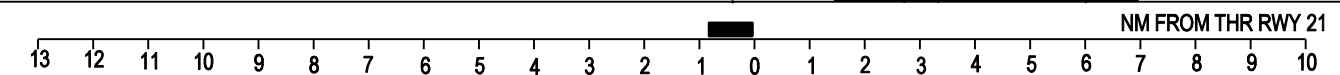
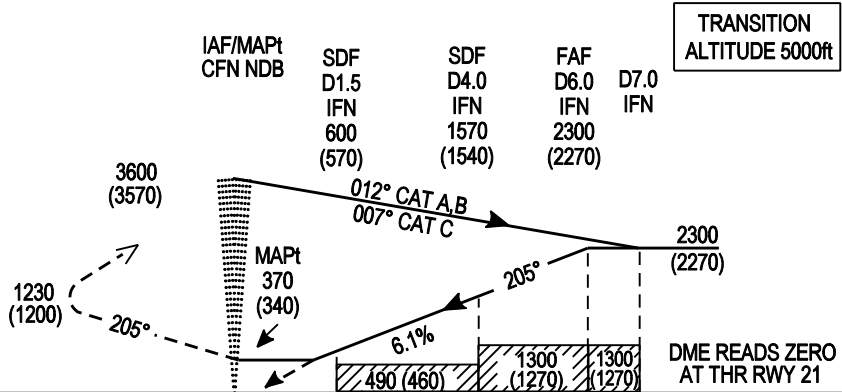
Mapping based on Ordnance Survey Ireland by Permission of the Government © Government of Ireland Permit Number 7109

CHANGE: Profile view of FAF



MISSED APPROACH: At or before MAPt climb straight ahead. At 1230 (1200)ft or 3 DME IFN whichever is later climbing right turn to return to NDB CFN at 3600 (3570)ft, or as directed.

ELEV 30ft (THR RWY 21)



OCA (H)	A	B	C	Note: Instrument approaches only available when Air Traffic Control Zone is active unless authorised by Flight Operations Dept of The Irish Aviation Authority	Recommended profile for Final Approach						
	← 370 (340) →				Decent Rate 6.1%, (3.5%), 370ft/NM						
Straight - in Approach					DME	5 DME	4 DME	3 DME	2 DME	1 DME	
Visual Manoeuvring	650 (620)	650 (620)	1900 (1870)		ALT /HT	1930(1900)	1570(1540)	1200(1170)	830 (800)	460 (430)	
					Ground Speed	Kts	70	80	100	120	140
					Rate of Decent	ft/min	430	495	615	740	865