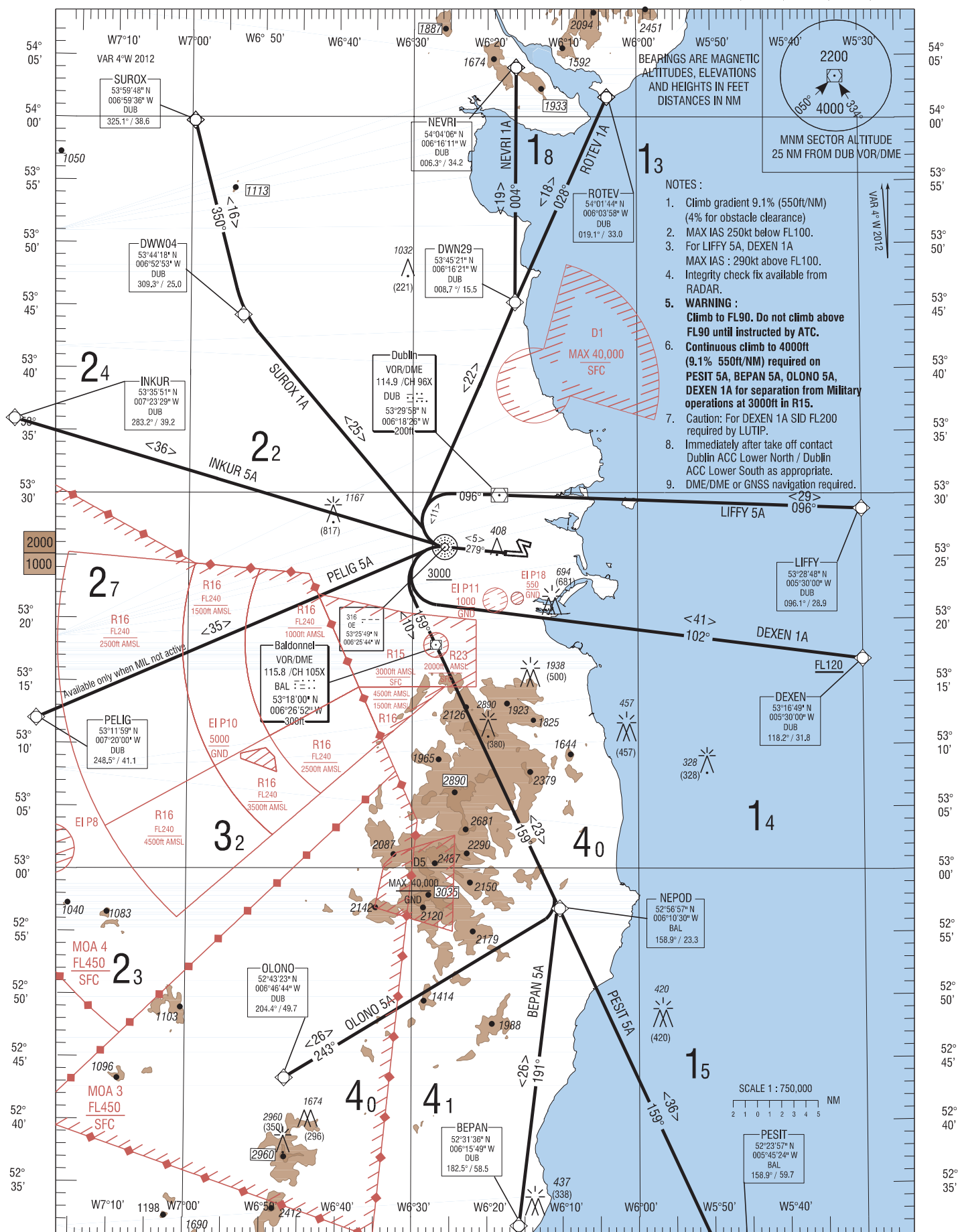


RNAV STANDARD DEPARTURE CHART
INSTRUMENT (SID) - ICAOTRANS ALT 5000ft
TRANS LEVEL by ATCATIS 124.525
TWR 118.600
DUBLIN ACC LOWER NORTH 132.575
DUBLIN ACC LOWER SOUTH 126.250DUBLIN RWY 28
CAT C, DLIFFY 5A, DEXEN 1A, PESIT 5A, BEPAN 5A, OLONO 5A,
PELIG 5A, INKUR 5A, SUROX 1A, NEVRI 1A, ROTEV 1A.

BEPAN5A CAT C/D SID RWY28

Navigation Performance	Path Terminator	WPT Name	Latitude (N), Longitude (W)	Fly-By or Fly-Over	Distance (NM)	True Track / Magnetic Track	Upper Limit/ Lower Limit	Speed Limit (kts)	Remarks
RNAV1	CA	RWY28	-	-	-	275.4 / 279	A642+	-	-
RNAV1	CF	OE	532548.6 / 0062543.7	Fly-Over	-	275.4 / 279	A3000+	-	-
RNAV1	CF	BAL	531759.6 / 0062652.0	Fly-By	-	154.8 / 159	-	-	L
RNAV1	TF	NEPOD	525657.2 / 0061029.8	Fly-By	23.3	154.8 / 159	-	-	-
RNAV1	TF	BEPAN	523136.2 / 0061549.5	Fly-By	25.6	187.3 / 191	-	-	-

DEXEN1A CAT C/D SID RWY28

Navigation Performance	Path Terminator	WPT Name	Latitude (N), Longitude (W)	Fly-By or Fly-Over	Distance (NM)	True Track / Magnetic Track	Upper Limit/ Lower Limit	Speed Limit (kts)	Remarks
RNAV1	CA	RWY28	-	-	-	275.4 / 279	A642+	-	-
RNAV1	CF	OE	532548.6 / 0062543.7	Fly-Over	-	275.4 / 279	A3000+	-	-
RNAV1	CF	DEXEN	531649.4 / 0053000.0	Fly-By	-	097.7 / 102	F120+	-	L

INKUR5A CAT C/D SID RWY28

Navigation Performance	Path Terminator	WPT Name	Latitude (N), Longitude (W)	Fly-By or Fly-Over	Distance (NM)	True Track / Magnetic Track	Upper Limit/ Lower Limit	Speed Limit (kts)	Remarks
RNAV1	CA	RWY28	-	-	-	275.4 / 279	A642+	-	-
RNAV1	CF	OE	532548.6 / 0062543.7	Fly-Over	-	275.4 / 279	A3000+	-	-
RNAV1	DF	INKUR	533551.3 / 0072328.6	Fly-By	-	-	-	-	-

LIFFY5A CAT C/D SID RWY28

Navigation Performance	Path Terminator	WPT Name	Latitude (N), Longitude (W)	Fly-By or Fly-Over	Distance (NM)	True Track / Magnetic Track	Upper Limit/ Lower Limit	Speed Limit (kts)	Remarks
RNAV1	CA	RWY28	-	-	-	275.4 / 279	A642+	-	-
RNAV1	CF	OE	532548.6 / 0062543.7	Fly-Over	-	275.4 / 279	A3000+	-	-
RNAV1	CF	DUB	532957.8 / 0061825.6	Fly-By	-	092.0 / 096	-	-	R
RNAV1	TF	LIFFY	532848.3 / 0053000.0	Fly-By	28.9	092.0 / 096	-	-	-

NEVRI1A CAT C/D SID RWY28

Navigation Performance	Path Terminator	WPT Name	Latitude (N), Longitude (W)	Fly-By or Fly-Over	Distance (NM)	True Track / Magnetic Track	Upper Limit/ Lower Limit	Speed Limit (kts)	Remarks
RNAV1	CA	RWY28	-	-	-	275.4 / 279	A642+	-	-
RNAV1	CF	OE	532548.6 / 0062543.7	Fly-Over	-	275.4 / 279	A3000+	-	-
RNAV1	DF	DWN29	534521.0 / 0061621.0	Fly-By	-	-	-	-	R
RNAV1	TF	NEVRI	540406.0 / 0061611.4	Fly-By	18.8	000.3 / 004	-	-	-

OLONO5A CAT C/D SID RWY28

Navigation Performance	Path Terminator	WPT Name	Latitude (N), Longitude (W)	Fly-By or Fly-Over	Distance (NM)	True Track / Magnetic Track	Upper Limit/ Lower Limit	Speed Limit (kts)	Remarks
RNAV1	CA	RWY28	-	-	-	275.4 / 279	A642+	-	-
RNAV1	CF	OE	532548.6 / 0062543.7	Fly-Over	-	275.4 / 279	A3000+	-	-
RNAV1	CF	BAL	531759.6 / 0062652.0	Fly-By	-	154.8 / 159	-	-	L
RNAV1	TF	NEPOD	525657.2 / 0061029.8	Fly-By	23.3	154.8 / 159	-	-	-
RNAV1	TF	OLONO	524323.1 / 0064644.4	Fly-By	25.8	238.5 / 243	-	-	R

PELIG5A CAT C/D SID RWY28

Navigation Performance	Path Terminator	WPT Name	Latitude (N), Longitude (W)	Fly-By or Fly-Over	Distance (NM)	True Track / Magnetic Track	Upper Limit/ Lower Limit	Speed Limit (kts)	Remarks
RNAV1	CA	RWY28	-	-	-	275.4 / 279	A642+	-	-
RNAV1	CF	OE	532548.6 / 0062543.7	Fly-Over	-	275.4 / 279	A3000+	-	-
RNAV1	DF	PELIG	531158.5 / 0072000.0	Fly-By	-	-	-	-	-

PESIT5A CAT C/D SID RWY28

Navigation Performance	Path Terminator	WPT Name	Latitude (N), Longitude (W)	Fly-By or Fly-Over	Distance (NM)	True Track / Magnetic Track	Upper Limit/ Lower Limit	Speed Limit (kts)	Remarks
RNAV1	CA	RWY28	-	-	-	275.4 / 279	A642+	-	-
RNAV1	CF	OE	532548.6 / 0062543.7	Fly-Over	-	275.4 / 279	A3000+	-	-
RNAV1	CF	BAL	531759.6 / 0062652.0	Fly-By	-	154.8 / 159	-	-	L
RNAV1	TF	NEPOD	525657.2 / 0061029.8	Fly-By	23.3	154.8 / 159	-	-	-
RNAV1	TF	PESTT	522356.6 / 0054524.0	Fly-By	36.4	155.0 / 159	-	-	-

ROTEV1A CAT C/D SID RWY28

Navigation Performance	Path Terminator	WPT Name	Latitude (N), Longitude (W)	Fly-By or Fly-Over	Distance (NM)	True Track / Magnetic Track	Upper Limit/ Lower Limit	Speed Limit (kts)	Remarks
RNAV1	CA	RWY28	-	-	-	275.4 / 279	A642+	-	-
RNAV1	CF	OE	532548.6 / 0062543.7	Fly-Over	-	275.4 / 279	A3000+	-	-
RNAV1	DF	DWN29	534521.0 / 0061621.0	Fly-By	-	-	-	-	R
RNAV1	TF	ROTEV	540143.7 / 0060358.4	Fly-By	18.0	024.0 / 028	-	-	-

SUROX1A CAT C/D SID RWY28

Navigation Performance	Path Terminator	WPT Name	Latitude (N), Longitude (W)	Fly-By or Fly-Over	Distance (NM)	True Track / Magnetic Track	Upper Limit/ Lower Limit	Speed Limit (kts)	Remarks
RNAV1	CA	RWY28	-	-	-	275.4 / 279	A642+	-	-
RNAV1	CF	OE	532548.6 / 0062543.7	Fly-Over	-	275.4 / 279	A3000+	-	-
RNAV1	DF	DWW04	534417.9 / 0065252.9	Fly-By	-	-	-	-	-
RNAV1	TF	SUROX	535948.0 / 0065936.5	Fly-By	16.0	345.7 / 350	-	-	-