

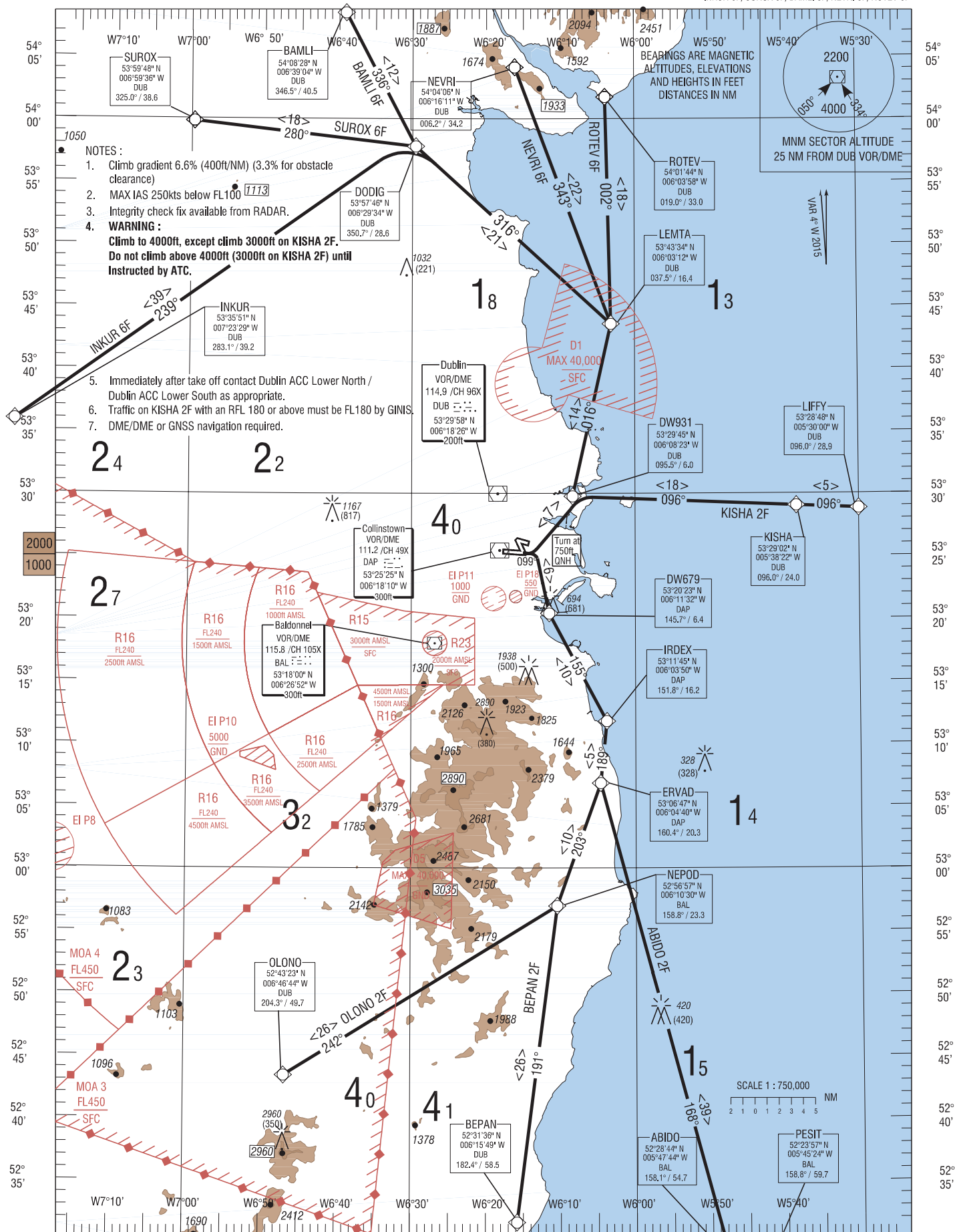
RNAV STANDARD DEPARTURE CHART
INSTRUMENT (SID) - ICAO

TRANS ALT 5000ft
TRANS LEVEL by ATC

ATIS 124.525
TWR 118.600
DUBLIN ACC LOWER NORTH 132.575
DUBLIN ACC LOWER SOUTH 126.250

DUBLIN RWY 10
CAT A, B

KISHA 2F, ABIDO 2F, BEPAN 2F, OLONO 2F,
INKUR 6F, SUROX 6F, BAMLI 6F, NEVRI 6F, ROTEV 6F.



CHANGE: New waypoints DW931 and LEMTA. DWS79 renamed DW679. Updated MAG VAR, bearings & distances. Revised designators. Revised notes 4 and 6.

General revision. Revised lateral profile (ground track) INKUR 6F, SUROX 6F, BAMLI 6F, NEVRI 6F, ROTEV 6F & KISHA 2F. Withdrawn waypoint ERUDA.

02 APR 2015

ABIDO2F CAT A/B SID RWY10

ABID2F

Navigation Performance	Path Terminator	WPT Name	Latitude (N) / Longitude (W)	Fly-By or Fly-Over	Distance (NM)	True Track / Magnetic Track	Upper Limit / Lower Limit	Speed Limit (kts)	Remarks
RNAV1	CA	-	-	-	-	095.3 / 099	+750ft	-	-
RNAV1	DF	DW679	532023.0 / 0061132.0	Fly-By	-	-	-	-	R
RNAV1	TF	IRDEX	531145.1 / 0060350.1	Fly-By	9.8	151.8 / 155	-	-	-
RNAV1	TF	ERVAD	530647.1 / 0060440.4	Fly-By	5.0	185.8 / 189	-	-	-
RNAV1	TF	ABIDO	522843.7 / 0054744.1	Fly-By	39.5	164.8 / 168	-	-	-
RNAV1	TF	PESIT	522356.6 / 0054524.0	Fly-By	5.0	163.4 / 167	-	-	-

BAMLI6F CAT A/B SID RWY10

BAML6F

Navigation Performance	Path Terminator	WPT Name	Latitude (N), Longitude (W)	Fly-By or Fly-Over	Distance (NM)	True Track / Magnetic Track	Upper Limit / Lower Limit	Speed Limit (kts)	Remarks
RNAV1	CA	-	-	-	-	095.3 / 099	+750ft	-	-
RNAV1	DF	DW931	532945.0 / 0060823.2	Fly-By	-	-	-	-	L
RNAV1	TF	LEMTA	534334.3 / 0060311.6	Fly-By	14.2	012.6 / 016	-	-	-
RNAV1	TF	DODIG	535746.0 / 0062934.0	Fly-By	21.1	312.5 / 316	-	-	-
RNAV1	TF	BAMLI	540828.5 / 0063904.0	Fly-By	12.1	332.5 / 336	-	-	-

BEPAN2F CAT A/B SID RWY10

BEPA2F

Navigation Performance	Path Terminator	WPT Name	Latitude (N), Longitude (W)	Fly-By or Fly-Over	Distance (NM)	True Track / Magnetic Track	Upper Limit / Lower Limit	Speed Limit (kts)	Remarks
RNAV1	CA	-	-	-	-	095.3 / 099	+750ft	-	-
RNAV1	DF	DW679	532023.0 / 0061132.0	Fly-By	-	-	-	-	R
RNAV1	TF	IRDEX	531145.1 / 0060350.1	Fly-By	9.8	151.8 / 155	-	-	-
RNAV1	TF	ERVAD	530647.1 / 0060440.4	Fly-By	5.0	185.8 / 189	-	-	-
RNAV1	TF	NEPOD	525657.2 / 0061029.8	Fly-By	10.5	199.7 / 203	-	-	-
RNAV1	TF	BEPAN	523136.2 / 0061549.5	Fly-By	25.6	187.3 / 191	-	-	-

INKUR6F CAT A/B SID RWY10

INKU6F

Navigation Performance	Path Terminator	WPT Name	Latitude (N), Longitude (W)	Fly-By or Fly-Over	Distance (NM)	True Track / Magnetic Track	Upper Limit / Lower Limit	Speed Limit (kts)	Remarks
RNAV1	CA	-	-	-	-	095.3 / 099	+750ft	-	-
RNAV1	DF	DW931	532945.0 / 0060823.2	Fly-By	-	-	-	-	L
RNAV1	TF	LEMTA	534334.3 / 0060311.6	Fly-By	14.2	012.6 / 016	-	-	-
RNAV1	TF	DODIG	535746.0 / 0062934.0	Fly-By	21.1	312.5 / 316	-	-	-
RNAV1	TF	INKUR	533551.3 / 0072328.6	Fly-By	38.8	235.9 / 239	-	-	-

KISHA2F CAT A/B SID RWY10

KISH2F

Navigation Performance	Path Terminator	WPT Name	Latitude (N), Longitude (W)	Fly-By or Fly-Over	Distance (NM)	True Track / Magnetic Track	Upper Limit / Lower Limit	Speed Limit (kts)	Remarks
RNAV1	CA	-	-	-	-	095.3 / 099	+750ft	-	-
RNAV1	DF	DW931	532945.0 / 0060823.2	Fly-By	-	-	-	-	L
RNAV1	TF	KISHA	532901.7 / 0053821.6	Fly-By	17.9	092.1 / 096	-	-	-
RNAV1	TF	LIFFY	532848.3 / 0053000.0	Fly-By	5.0	092.5 / 096	-	-	-

NEVRI6F CAT A/B SID RWY10

NEVR6F

Navigation Performance	Path Terminator	WPT Name	Latitude (N), Longitude (W)	Fly-By or Fly-Over	Distance (NM)	True Track / Magnetic Track	Upper Limit / Lower Limit	Speed Limit (kts)	Remarks
RNAV1	CA	-	-	-	-	095.3 / 099	+750ft	-	-
RNAV1	DF	DW931	532945.0 / 0060823.2	Fly-By	-	-	-	-	L
RNAV1	TF	LEMTA	534334.3 / 0060311.6	Fly-By	14.2	012.6 / 016	-	-	-
RNAV1	TF	NEVRI	540406.0 / 0061611.4	Fly-By	22.0	339.6 / 343	-	-	-

OLONO2F CAT A/B SID RWY10

OLON2F

Navigation Performance	Path Terminator	WPT Name	Latitude (N), Longitude (W)	Fly-By or Fly-Over	Distance (NM)	True Track / Magnetic Track	Upper Limit / Lower Limit	Speed Limit (kts)	Remarks
RNAV1	CA	-	-	-	-	095.3 / 099	+750ft	-	-
RNAV1	DF	DW679	532023.0 / 0061132.0	Fly-By	-	-	-	-	R
RNAV1	TF	IRDEX	531145.1 / 0060350.1	Fly-By	9.8	151.8 / 155	-	-	-
RNAV1	TF	ERVAD	530647.1 / 0060440.4	Fly-By	5.0	185.8 / 189	-	-	-
RNAV1	TF	NEPOD	525657.2 / 0061029.8	Fly-By	10.5	199.7 / 203	-	-	-
RNAV1	TF	OLONO	524323.1 / 0064644.4	Fly-By	25.8	238.5 / 242	-	-	-

ROTEV6F CAT A/B SID RWY10

ROTE6F

Navigation Performance	Path Terminator	WPT Name	Latitude (N), Longitude (W)	Fly-By or Fly-Over	Distance (NM)	True Track / Magnetic Track	Upper Limit / Lower Limit	Speed Limit (kts)	Remarks
RNAV1	CA	-	-	-	-	095.3 / 099	+750ft	-	-
RNAV1	DF	DW931	532945.0 / 0060823.2	Fly-By	-	-	-	-	L
RNAV1	TF	LEMTA	534334.3 / 0060311.6	Fly-By	14.2	012.6 / 016	-	-	-
RNAV1	TF	ROTEV	540143.7 / 0060358.4	Fly-By	18.2	358.5 / 002	-	-	-

SUROX6F CAT A/B SID RWY10

SURO6F

Navigation Performance	Path Terminator	WPT Name	Latitude (N), Longitude (W)	Fly-By or Fly-Over	Distance (NM)	True Track / Magnetic Track	Upper Limit / Lower Limit	Speed Limit (kts)	Remarks
RNAV1	CA	-	-	-	-	095.3 / 099	+750ft	-	-
RNAV1	DF	DW931	532945.0 / 0060823.2	Fly-By	-	-	-	-	L
RNAV1	TF	LEMTA	534334.3 / 0060311.6	Fly-By	14.2	012.6 / 016	-	-	-
RNAV1	TF	DODIG	535746.0 / 0062934.0	Fly-By	21.1	312.5 / 316	-	-	-
RNAV1	TF	SUROX	535948.0 / 0065936.5	Fly-By	17.9	276.8 / 280	-	-	-