

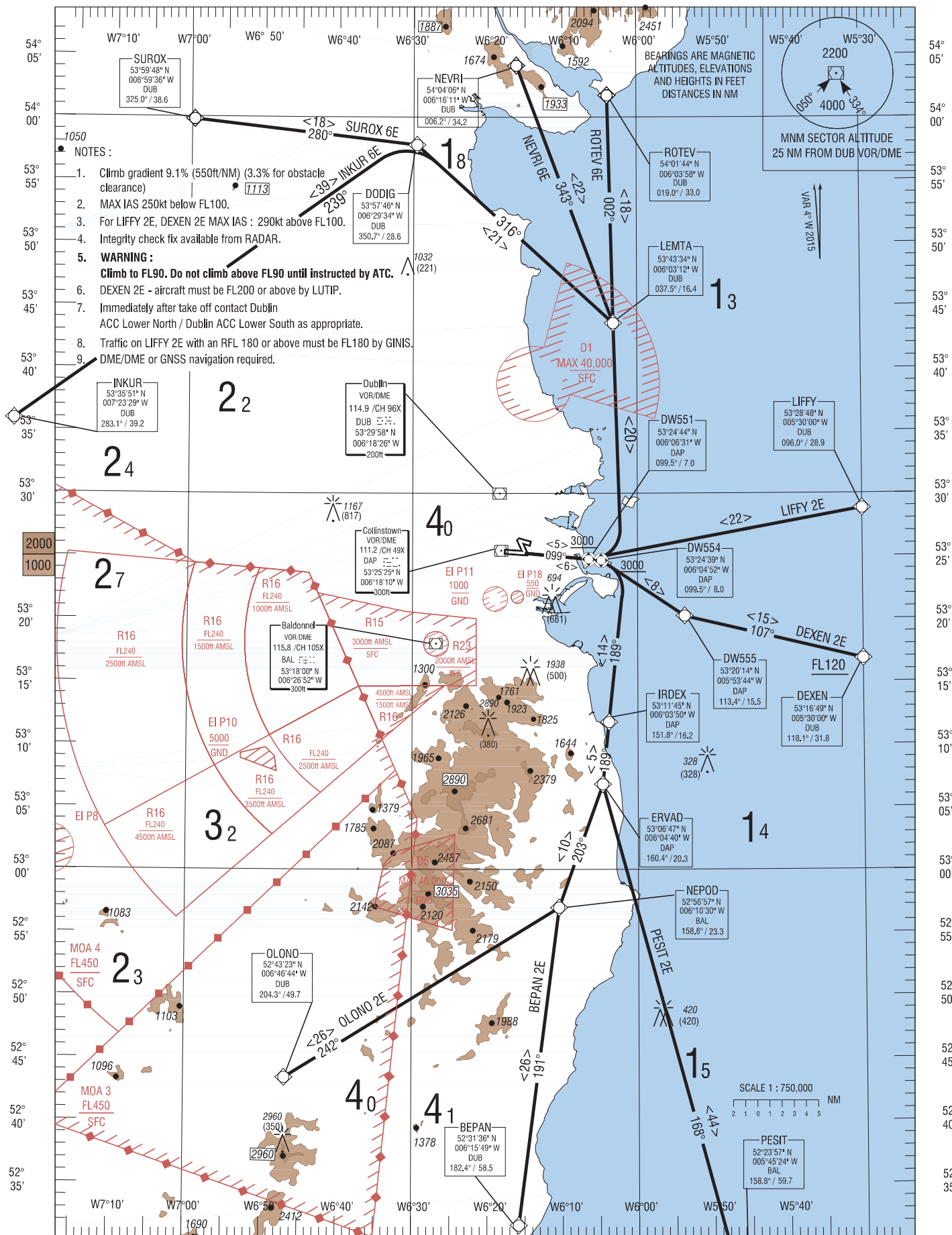
RNAV STANDARD DEPARTURE CHART
INSTRUMENT (SID) - ICAO

TRANS ALT 5000ft
TRANS LEVEL by ATC

ATIS 124.525
TWR 118.600
DUBLIN ACC LOWER NORTH 132.575
DUBLIN ACC LOWER SOUTH 126.250

DUBLIN RWY 10
CAT C, D

LIFFY 2E, DEXEN 2E, PESIT 2E, BEPAN 2E, OLONO 2E,
INKUR 6E, SUROX 6E, NEVRI 6E, ROTEV 6E.



CHANGE: New waypoints DW551, DW554, DW555, LEMTA. Updated MAG VAR, bearings & distances. Revised designators. Revised notes. Revised SIDs INKUR 6E, SUROX 6E, NEVRI 6E, ROTEV 6E, DEXEN 2E. Withdrawn waypoints DWE55, DWE51, DWE54, ERUDA. General Revision.

02 APR 2015

BEPAN2E CAT C/D SID RWY10

BEPAN2E

Navigation Performance	Path Terminator	WPT Name	Latitude (N) / Longitude (W)	Fly-By or Fly-Over	Distance (NM)	True Track / Magnetic Track	Upper Limit / Lower Limit	Speed Limit (kts)	Remarks
RNAV1	CA	-	-	-	-	095.3 / 099	+ 642ft	-	-
RNAV1	CF	DW554	532438.8 / 0060451.6	Fly-Over	-	095.3 / 099	+ 3000ft	-	-
RNAV1	CF	IRDEX	531145.1 / 0060350.1	Fly-By	-	185.8 / 189	-	-	R
RNAV1	TF	ERVAD	530647.1 / 0060440.4	Fly-By	5.0	185.8 / 189	-	-	-
RNAV1	TF	NEPOD	525657.2 / 0061029.8	Fly-By	10.5	199.7 / 203	-	-	-
RNAV1	TF	BEPAN	523136.2 / 0061549.5	Fly-By	25.6	187.3 / 191	-	-	-

DEXEN2E CAT C/D SID RWY10

DEXE2E

Navigation Performance	Path Terminator	WPT Name	Latitude (N) / Longitude (W)	Fly-By or Fly-Over	Distance (NM)	True Track / Magnetic Track	Upper Limit / Lower Limit	Speed Limit (kts)	Remarks
RNAV1	CA	-	-	-	-	095.3 / 099	+ 642ft	-	-
RNAV1	CF	DW554	532438.8 / 0060451.6	Fly-Over	-	095.3 / 099	+ 3000ft	-	-
RNAV1	DF	DW555	532013.7 / 0055344.0	Fly-By	-	-	-	-	-
RNAV1	TF	DEXEN	531649.4 / 0053000.0	Fly-By	14.6	103.3 / 107	+ FL120	-	-

INKUR6E CAT C/D SID RWY10

INKU6E

Navigation Performance	Path Terminator	WPT Name	Latitude (N) / Longitude (W)	Fly-By or Fly-Over	Distance (NM)	True Track / Magnetic Track	Upper Limit / Lower Limit	Speed Limit (kts)	Remarks
RNAV1	CA	-	-	-	-	095.3 / 099	+ 642ft	-	-
RNAV1	CF	DW551	532444.5 / 0060631.4	Fly-Over	-	095.3 / 099	+ 3000ft	-	-
RNAV1	DF	LEMTA	534334.3 / 0060311.6	Fly-By	14.2	-	-	-	L
RNAV1	TF	DODIG	535746.0 / 0062934.0	Fly-By	21.1	312.5 / 316	-	-	-
RNAV1	TF	INKUR	533551.3 / 0072328.6	Fly-By	38.8	235.9 / 239	-	-	-

LIFFY2E CAT C/D SID RWY10

LIFF2E

Navigation Performance	Path Terminator	WPT Name	Latitude (N) / Longitude (W)	Fly-By or Fly-Over	Distance (NM)	True Track / Magnetic Track	Upper Limit / Lower Limit	Speed Limit (kts)	Remarks
RNAV1	CA	-	-	-	-	095.3 / 099	+ 642ft	-	-
RNAV1	CF	DW551	532444.5 / 0060631.4	Fly-Over	-	095.3 / 099	+ 3000ft	-	-
RNAV1	DF	LIFFY	532848.3 / 0053000.0	Fly-By	-	-	-	-	-

NEVRI6E CAT C/D SID RWY10

NEVR6E

Navigation Performance	Path Terminator	WPT Name	Latitude (N) / Longitude (W)	Fly-By or Fly-Over	Distance (NM)	True Track / Magnetic Track	Upper Limit / Lower Limit	Speed Limit (kts)	Remarks
RNAV1	CA	-	-	-	-	095.3 / 099	+ 642ft	-	-
RNAV1	CF	DW551	532444.5 / 0060631.4	Fly-Over	-	095.3 / 099	+ 3000ft	-	-
RNAV1	DF	LEMTA	534334.3 / 0060311.6	Fly-By	20.4	-	-	-	L
RNAV1	TF	NEVRI	540406.0 / 0061611.4	Fly-By	22.0	339.6 / 343	-	-	-

OLONO2E CAT C/D SID RWY10

OLON2E

Navigation Performance	Path Terminator	WPT Name	Latitude (N) / Longitude (W)	Fly-By or Fly-Over	Distance (NM)	True Track / Magnetic Track	Upper Limit / Lower Limit	Speed Limit (kts)	Remarks
RNAV1	CA	-	-	-	-	095.3 / 099	+ 642ft	-	-
RNAV1	CF	DW554	532438.8 / 0060451.6	Fly-Over	-	095.3 / 099	+ 3000ft	-	-
RNAV1	CF	IRDEX	531145.1 / 0060350.1	Fly-By	-	185.8 / 189	-	-	R
RNAV1	TF	ERVAD	530647.1 / 0060440.4	Fly-By	5.0	185.8 / 189	-	-	-
RNAV1	TF	NEPOD	525657.2 / 0061029.8	Fly-By	10.5	199.7 / 203	-	-	-
RNAV1	TF	OLONO	524323.1 / 0064644.4	Fly-By	25.8	238.5 / 242	-	-	-

PESIT2E CAT C/D SID RWY10

PESI2E

Navigation Performance	Path Terminator	WPT Name	Latitude (N) / Longitude (W)	Fly-By or Fly-Over	Distance (NM)	True Track / Magnetic Track	Upper Limit / Lower Limit	Speed Limit (kts)	Remarks
RNAV1	CA	-	-	-	-	095.3 / 099	+ 642ft	-	-
RNAV1	CF	DW554	532438.8 / 0060451.6	Fly-Over	-	095.3 / 099	+ 3000ft	-	-
RNAV1	CF	IRDEX	531145.1 / 0060350.1	Fly-By	-	185.8 / 189	-	-	R
RNAV1	TF	ERVAD	530647.1 / 0060440.4	Fly-By	5.0	185.8 / 189	-	-	-
RNAV1	TF	PESIT	522356.6 / 0054524.0	Fly-By	44.5	164.6 / 168	-	-	-

ROTEV6E CAT C/D SID RWY10

ROTE6E

Navigation Performance	Path Terminator	WPT Name	Latitude (N) / Longitude (W)	Fly-By or Fly-Over	Distance (NM)	True Track / Magnetic Track	Upper Limit / Lower Limit	Speed Limit (kts)	Remarks
RNAV1	CA	-	-	-	-	095.3 / 099	+ 642ft	-	-
RNAV1	CF	DW551	532444.5 / 0060631.4	Fly-Over	-	095.3 / 099	+ 3000ft	-	-
RNAV1	DF	LEMTA	534334.3 / 0060311.6	Fly-By	20.4	-	-	-	L
RNAV1	TF	ROTEV	540143.7 / 0060358.4	Fly-By	18.2	358.5 / 002	-	-	-

SUROX6E CAT C/D SID RWY10

SURO6E

Navigation Performance	Path Terminator	WPT Name	Latitude (N) / Longitude (W)	Fly-By or Fly-Over	Distance (NM)	True Track / Magnetic Track	Upper Limit / Lower Limit	Speed Limit (kts)	Remarks
RNAV1	CA	-	-	-	-	095.3 / 099	+ 642ft	-	-
RNAV1	CF	DW551	532444.5 / 0060631.4	Fly-Over	-	095.3 / 099	+ 3000ft	-	-
RNAV1	DF	LEMTA	534334.3 / 0060311.6	Fly-By	14.2	-	-	-	L
RNAV1	TF	DODIG	535746.0 / 0062934.0	Fly-By	21.1	312.5 / 316	-	-	-
RNAV1	TF	SUROX	535948.0 / 0065936.5	Fly-By	17.9	276.8 / 280	-	-	-