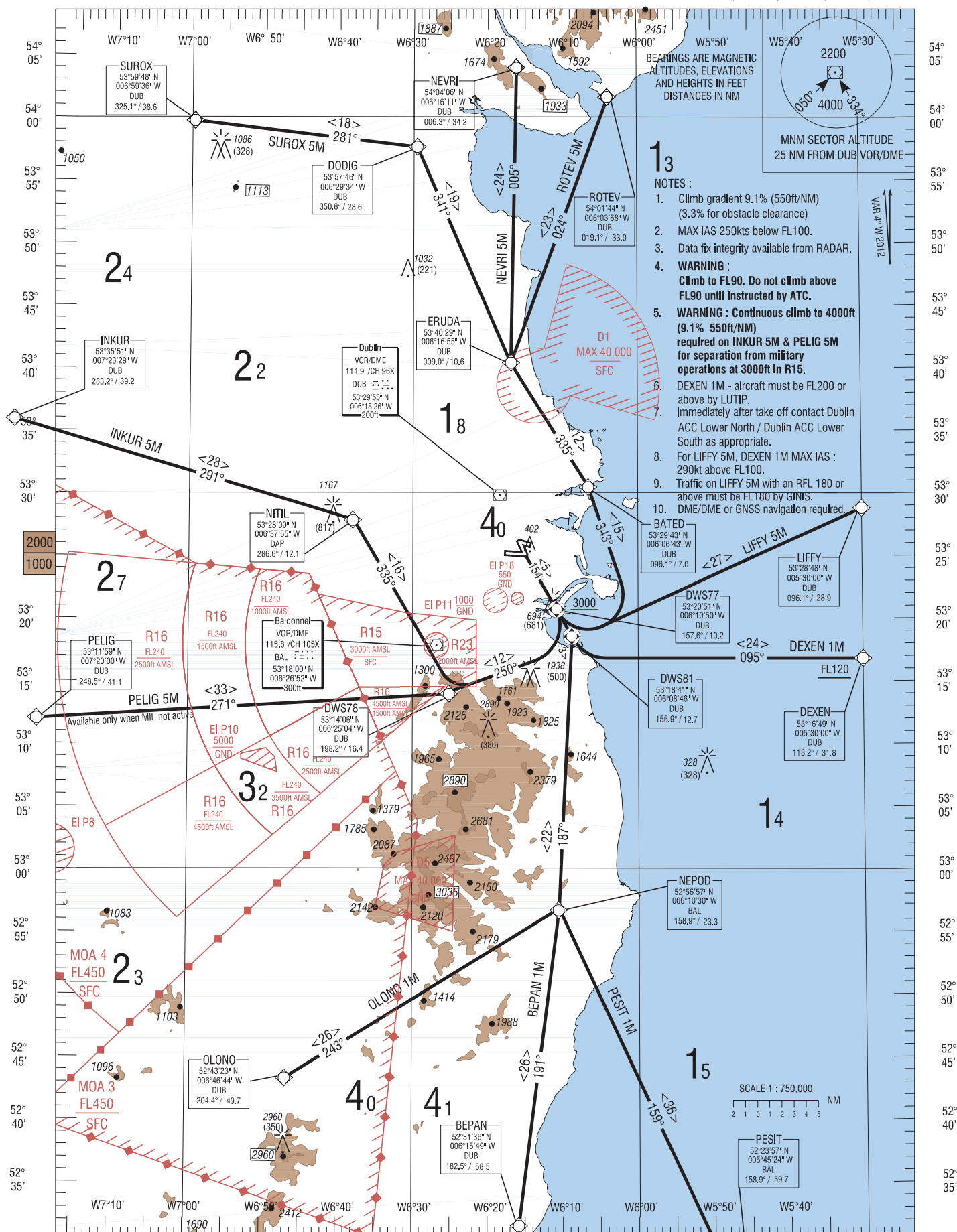


RNAV STANDARD DEPARTURE CHART
INSTRUMENT (SID) - ICAOTRANS ALT 5000ft
TRANS LEVEL by ATCATIS 124.525
TWR 118.600
DUBLIN ACC LOWER NORTH 132.575
DUBLIN ACC LOWER SOUTH 126.250DUBLIN RWY 16
CAT C, DLIFFY 5M, DEXEN 1M, PESIT 1M, BEPAN 1M, OLONO 1M,
PELIG 5M, INKUR 5M, SUROX 5M, NEVRI 5M, ROTEV 5M.

CHANGE: New waypoints DEXEN, DWS81. Updated MAG VAR, bearings & distances. Frequencies revised. Revised designators. Revised notes. General revision. Revised AMA figures. New SIDs DEXEN 1M, PESIT 1M, BEPAN 1M, OLONO 1M & revised SIDs LIFFY 5M, PELIG 5M, INKUR 5M, SUROX 5M, NEVRI 5M, ROTEV 5M.

BEPAN1M CAT C/D SID RWY16

Navigation Performance	Path Terminator	WPT Name	Latitude (N), Longitude (W)	Fly-By or Fly-Over	Distance (NM)	True Track / Magnetic Track	Upper Limit/ Lower Limit	Speed Limit (kts)	Remarks
RNAV1	CA	RWY16	-	-	-	150.3 / 154	A642+	-	-
RNAV1	CF	DWS77	532051.5 / 0061050.3	Fly-Over	-	150.3 / 154	A3000+	-	-
RNAV1	CF	DWS81	531841.3 / 0060846.5	Fly-By	2.5	150.3 / 154	-	-	-
RNAV1	TF	NEPOD	525657.2 / 0061029.8	Fly-By	21.8	182.7 / 187	-	-	-
RNAV1	TF	BEPAN	523136.2 / 0061549.5	Fly-By	25.6	187.3 / 191	-	-	-

DEXEN1M CAT C/D SID RWY16

Navigation Performance	Path Terminator	WPT Name	Latitude (N), Longitude (W)	Fly-By or Fly-Over	Distance (NM)	True Track / Magnetic Track	Upper Limit/ Lower Limit	Speed Limit (kts)	Remarks
RNAV1	CA	RWY16	-	-	-	150.3 / 154	A642+	-	-
RNAV1	CF	DWS77	532051.5 / 0061050.3	Fly-Over	-	150.3 / 154	A3000+	-	-
RNAV1	CF	DWS81	531841.3 / 0060846.5	Fly-Over	2.5	150.3 / 154	-	-	-
RNAV1	CF	DEXEN	531649.4 / 0053000.0	Fly-By	-	091.2 / 095	F120+	-	L

INKUR5M CAT C/D SID RWY16

Navigation Performance	Path Terminator	WPT Name	Latitude (N), Longitude (W)	Fly-By or Fly-Over	Distance (NM)	True Track / Magnetic Track	Upper Limit/ Lower Limit	Speed Limit (kts)	Remarks
RNAV1	CA	RWY16	-	-	-	150.3 / 154	A642+	-	-
RNAV1	CF	DWS77	532051.5 / 0061050.3	Fly-Over	-	150.3 / 154	A3000+	-	-
RNAV1	CF	DWS78	531406.0 / 0062504.0	Fly-By	-	245.7 / 250	-	-	R
RNAV1	TF	NITIL	532800.0 / 0063755.0	Fly-By	15.9	331.1 / 335	-	-	R
RNAV1	TF	INKUR	533551.3 / 0072328.6	Fly-By	28.3	286.4 / 291	-	-	-

LIFFY5M CAT C/D SID RWY16

Navigation Performance	Path Terminator	WPT Name	Latitude (N), Longitude (W)	Fly-By or Fly-Over	Distance (NM)	True Track / Magnetic Track	Upper Limit/ Lower Limit	Speed Limit (kts)	Remarks
RNAV1	CA	RWY16	-	-	-	150.3 / 154	A642+	-	-
RNAV1	CF	DWS77	532051.5 / 0061050.3	Fly-Over	-	150.3 / 154	A3000+	-	-
RNAV1	DF	LIFFY	532848.3 / 0053000.0	Fly-By	-	-	-	-	L

NEVRI5M CAT C/D SID RWY16

Navigation Performance	Path Terminator	WPT Name	Latitude (N), Longitude (W)	Fly-By or Fly-Over	Distance (NM)	True Track / Magnetic Track	Upper Limit/ Lower Limit	Speed Limit (kts)	Remarks
RNAV1	CA	RWY16	-	-	-	150.3 / 154	A642+	-	-
RNAV1	CF	DWS77	532051.5 / 0061050.3	Fly-Over	-	150.3 / 154	A3000+	-	-
RNAV1	CF	BATED	532942.8 / 0060642.8	Fly-By	-	339.2 / 343	-	-	L
RNAV1	TF	ERUDA	534029.0 / 0061655.0	Fly-By	12.4	330.7 / 335	-	-	-
RNAV1	TF	NEVRI	540406.0 / 0061611.4	Fly-By	23.7	001.0 / 005	-	-	-

OLONO1M CAT C/D SID RWY16

Navigation Performance	Path Terminator	WPT Name	Latitude (N), Longitude (W)	Fly-By or Fly-Over	Distance (NM)	True Track / Magnetic Track	Upper Limit/ Lower Limit	Speed Limit (kts)	Remarks
RNAV1	CA	RWY16	-	-	-	150.3 / 154	A642+	-	-
RNAV1	CF	DWS77	532051.5 / 0061050.3	Fly-Over	-	150.3 / 154	A3000+	-	-
RNAV1	CF	DWS81	531841.3 / 0060846.5	Fly-By	2.5	150.3 / 154	-	-	-
RNAV1	TF	NEPOD	525657.2 / 0061029.8	Fly-By	21.8	182.7 / 187	-	-	R
RNAV1	TF	OLONO	524323.1 / 0064644.4	Fly-By	25.8	238.5 / 243	-	-	-

PELIG5M CAT C/D SID RWY16

Navigation Performance	Path Terminator	WPT Name	Latitude (N), Longitude (W)	Fly-By or Fly-Over	Distance (NM)	True Track / Magnetic Track	Upper Limit/ Lower Limit	Speed Limit (kts)	Remarks
RNAV1	CA	RWY16	-	-	-	150.3 / 154	A642+	-	-
RNAV1	CF	DWS77	532051.5 / 0061050.3	Fly-Over	-	150.3 / 154	A3000+	-	-
RNAV1	CF	DWS78	531406.0 / 0062504.0	Fly-By	-	245.7 / 250	-	-	R
RNAV1	TF	PELIG	531158.5 / 0072000.0	Fly-By	33.1	266.7 / 271	-	-	-

PESIT1M CAT C/D SID RWY16

Navigation Performance	Path Terminator	WPT Name	Latitude (N), Longitude (W)	Fly-By or Fly-Over	Distance (NM)	True Track / Magnetic Track	Upper Limit/ Lower Limit	Speed Limit (kts)	Remarks
RNAV1	CA	RWY16	-	-	-	150.3 / 154	A642+	-	-
RNAV1	CF	DWS77	532051.5 / 0061050.3	Fly-Over	-	150.3 / 154	A3000+	-	-
RNAV1	CF	DWS81	531841.3 / 0060846.5	Fly-By	2.5	150.3 / 154	-	-	-
RNAV1	TF	NEPOD	525657.2 / 0061029.8	Fly-By	21.8	182.7 / 187	-	-	-
RNAV1	TF	PESIT	522356.6 / 0054524.0	Fly-By	36.4	155.0 / 159	-	-	-

ROTEV5M CAT C/D SID RWY16

Navigation Performance	Path Terminator	WPT Name	Latitude (N), Longitude (W)	Fly-By or Fly-Over	Distance (NM)	True Track / Magnetic Track	Upper Limit/ Lower Limit	Speed Limit (kts)	Remarks
RNAV1	CA	RWY16	-	-	-	150.3 / 154	A642+	-	-
RNAV1	CF	DWS77	532051.5 / 0061050.3	Fly-Over	-	150.3 / 154	A3000+	-	-
RNAV1	CF	BATED	532942.8 / 0060642.8	Fly-By	-	339.2 / 343	-	-	L
RNAV1	TF	ERUDA	534029.0 / 0061655.0	Fly-By	12.4	330.7 / 335	-	-	-
RNAV1	TF	ROTEV	540143.7 / 0060358.4	Fly-By	22.6	019.7 / 024	-	-	-

SUROX5M CAT C/D SID RWY16

Navigation Performance	Path Terminator	WPT Name	Latitude (N), Longitude (W)	Fly-By or Fly-Over	Distance (NM)	True Track / Magnetic Track	Upper Limit/ Lower Limit	Speed Limit (kts)	Remarks
RNAV1	CA	RWY16	-	-	-	150.3 / 154	A642+	-	-
RNAV1	CF	DWS77	532051.5 / 0061050.3	Fly-Over	-	150.3 / 154	A3000+	-	-
RNAV1	CF	BATED	532942.8 / 0060642.8	Fly-By	-	339.2 / 343	-	-	L
RNAV1	TF	ERUDA	534029.0 / 0061655.0	Fly-By	12.4	330.7 / 335	-	-	-
RNAV1	TF	DODIG	535746.0 / 0062934.0	Fly-By	18.9	336.7 / 341	-	-	-
RNAV1	TF	SUROX	535948.0 / 0065936.5	Fly-By	17.9	276.8 / 281	-	-	-