

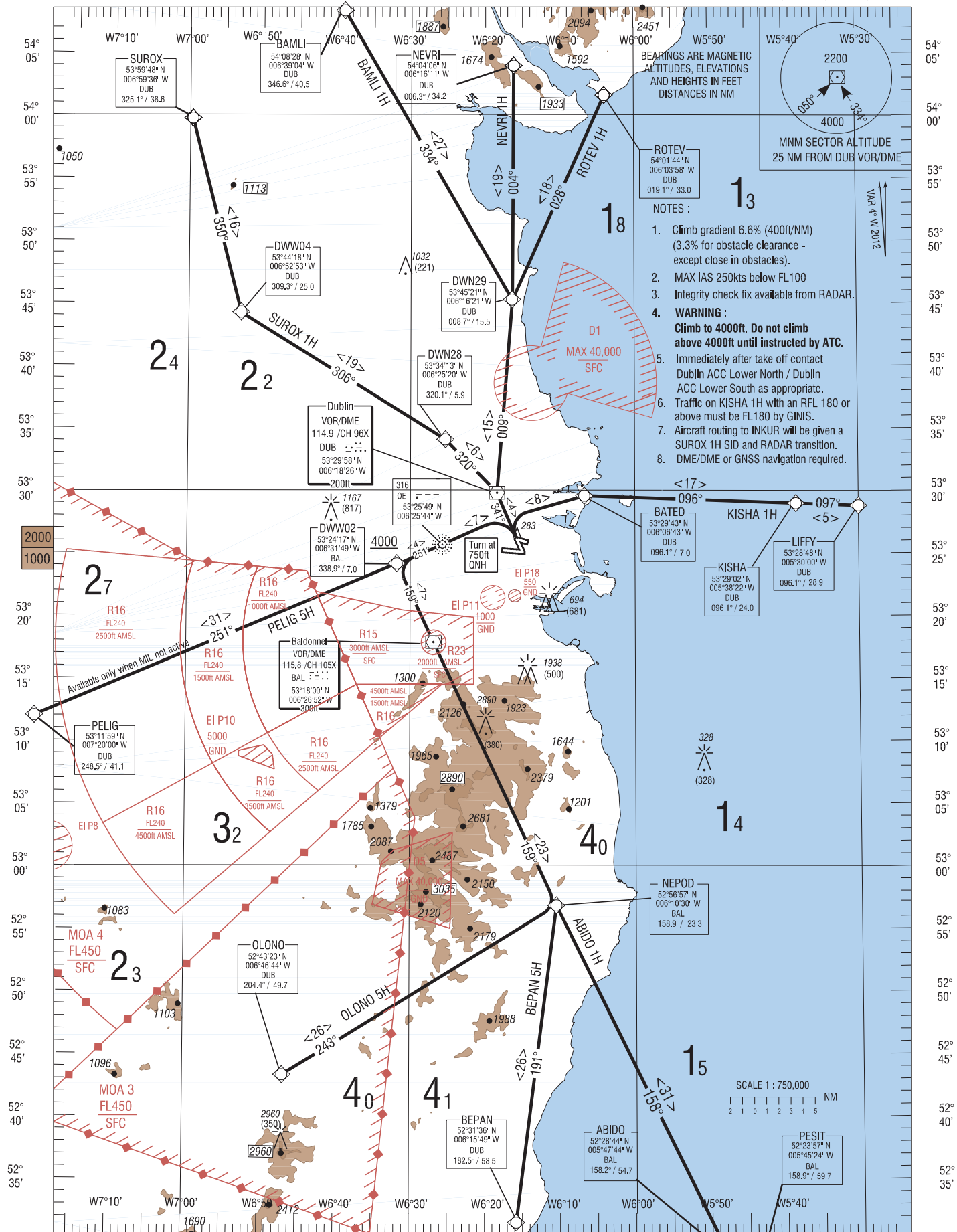
RNAV STANDARD DEPARTURE CHART  
INSTRUMENT (SID) - ICAO

TRANS ALT 5000ft  
TRANS LEVEL by ATC

ATIS 124.525  
TWR 118.600  
DUBLIN ACC LOWER NORTH 132.575  
DUBLIN ACC LOWER SOUTH 126.250

DUBLIN RWY 34  
CAT A, B

KISHA 1H, ABIDO 1H, BEPAN 5H, OLONO 5H, PELIG 5H,  
SUROX 1H, BAMLI 1H, NEVRI 1H, ROTEV 1H.



CHANGE: New waypoints DWN28, DWW04, DWN29, ABIDO & KISHA. Updated MAG VAR, bearings & distances. Revised designators. Revised notes. General revision  
Frequencies revised. Revised SIDs BEPAN 5H, OLONO 5H, PELIG 5H & new SIDs KISHA 1H, ABIDO 1H, SUROX 1H, BAMLI 1H, NEVRI 1H & ROTEV 1H.

## ABIDO1H CAT A/B SID RWY34

Navigation Performance	Path Terminator	WPT Name	Latitude (N), Longitude (W)	Fly-By or Fly-Over	Distance (NM)	True Track / Magnetic Track	Upper Limit/ Lower Limit	Speed Limit (kts)	Remarks
RNAV1	CA	RWY34	-	-	-	336.6 / 341	A750+	-	-
RNAV1	DF	OE	532548.6 / 0062543.7	Fly-By	-	-	-	-	L
RNAV1	TF	DWW02	532417.1 / 0063149.2	Fly-By	4.0	247.3 / 251	A4000+	-	-
RNAV1	TF	BAL	531759.6 / 0062652.0	Fly-By	7.0	154.7 / 159	-	-	L
RNAV1	TF	NEPOD	525657.2 / 0061029.8	Fly-By	23.3	154.8 / 159	-	-	-
RNAV1	TF	ABIDO	522843.7 / 0054744.1	Fly-By	31.5	153.8 / 158	-	-	-
RNAV1	TF	PESIT	522356.6 / 0054524.0	Fly-By	5.0	163.4 / 168	-	-	-

## BAMLI1H CAT A/B SID RWY34

Navigation Performance	Path Terminator	WPT Name	Latitude (N), Longitude (W)	Fly-By or Fly-Over	Distance (NM)	True Track / Magnetic Track	Upper Limit/ Lower Limit	Speed Limit (kts)	Remarks
RNAV1	CA	RWY34	-	-	-	336.6 / 341	A750+	-	-
RNAV1	CF	DUB	532957.8 / 0061825.6	Fly-By	-	336.6 / 341	-	-	-
RNAV1	TF	DWN29	534521.0 / 0061621.0	Fly-By	15.5	004.6 / 009	-	-	-
RNAV1	TF	BAMLI	540828.5 / 0063904.0	Fly-By	26.8	330.1 / 334	-	-	-

## BEPAN5H CAT A/B SID RWY34

Navigation Performance	Path Terminator	WPT Name	Latitude (N), Longitude (W)	Fly-By or Fly-Over	Distance (NM)	True Track / Magnetic Track	Upper Limit/ Lower Limit	Speed Limit (kts)	Remarks
RNAV1	CA	RWY34	-	-	-	336.6 / 341	A750+	-	-
RNAV1	DF	OE	532548.6 / 0062543.7	Fly-By	-	-	-	-	L
RNAV1	TF	DWW02	532417.1 / 0063149.2	Fly-By	4.0	247.3 / 251	A4000+	-	-
RNAV1	TF	BAL	531759.6 / 0062652.0	Fly-By	7.0	154.7 / 159	-	-	L
RNAV1	TF	NEPOD	525657.2 / 0061029.8	Fly-By	23.3	154.8 / 159	-	-	-
RNAV1	TF	BEPAN	523136.2 / 0061549.5	Fly-By	25.6	187.3 / 191	-	-	-

## KISHA1H CAT A/B SID RWY34

Navigation Performance	Path Terminator	WPT Name	Latitude (N), Longitude (W)	Fly-By or Fly-Over	Distance (NM)	True Track / Magnetic Track	Upper Limit/ Lower Limit	Speed Limit (kts)	Remarks
RNAV1	CA	RWY34	-	-	-	336.6 / 341	A750+	-	-
RNAV1	DF	BATED	532942.8 / 0060642.8	Fly-By	-	-	-	-	R
RNAV1	TF	KISHA	532901.7 / 0053821.6	Fly-By	17.0	092.1 / 096	-	-	-
RNAV1	TF	LIFFY	532848.3 / 0053000.0	Fly-By	5.0	092.5 / 097	-	-	-

## NEVR1H CAT A/B SID RWY34

Navigation Performance	Path Terminator	WPT Name	Latitude (N), Longitude (W)	Fly-By or Fly-Over	Distance (NM)	True Track / Magnetic Track	Upper Limit/ Lower Limit	Speed Limit (kts)	Remarks
RNAV1	CA	RWY34	-	-	-	336.6 / 341	A750+	-	-
RNAV1	CF	DUB	532957.8 / 0061825.6	Fly-By	-	336.6 / 341	-	-	-
RNAV1	TF	DWN29	534521.0 / 0061621.0	Fly-By	15.5	004.6 / 009	-	-	-
RNAV1	TF	NEVR1	540406.0 / 0061611.4	Fly-By	18.8	000.3 / 004	-	-	-

## OLONO5H CAT A/B SID RWY34

Navigation Performance	Path Terminator	WPT Name	Latitude (N), Longitude (W)	Fly-By or Fly-Over	Distance (NM)	True Track / Magnetic Track	Upper Limit/ Lower Limit	Speed Limit (kts)	Remarks
RNAV1	CA	RWY34	-	-	-	336.6 / 341	A750+	-	-
RNAV1	DF	OE	532548.6 / 0062543.7	Fly-By	-	-	-	-	L
RNAV1	TF	DWW02	532417.1 / 0063149.2	Fly-By	4.0	247.3 / 251	A4000+	-	-
RNAV1	TF	BAL	531759.6 / 0062652.0	Fly-By	7.0	154.7 / 159	-	-	L
RNAV1	TF	NEPOD	525657.2 / 0061029.8	Fly-By	23.3	154.8 / 159	-	-	-
RNAV1	TF	OLONO	524323.1 / 0064644.4	Fly-By	25.8	238.5 / 243	-	-	R

## PELIG5H CAT A/B SID RWY34

Navigation Performance	Path Terminator	WPT Name	Latitude (N), Longitude (W)	Fly-By or Fly-Over	Distance (NM)	True Track / Magnetic Track	Upper Limit/ Lower Limit	Speed Limit (kts)	Remarks
RNAV1	CA	RWY34	-	-	-	336.6 / 341	A750+	-	-
RNAV1	DF	OE	532548.6 / 0062543.7	Fly-By	-	-	-	-	L
RNAV1	TF	DWW02	532417.1 / 0063149.2	Fly-By	4.0	247.3 / 251	A4000+	-	-
RNAV1	TF	PELIG	531158.5 / 0072000.0	Fly-By	31.4	247.2 / 251	-	-	-

## ROTEV1H CAT A/B SID RWY34

Navigation Performance	Path Terminator	WPT Name	Latitude (N), Longitude (W)	Fly-By or Fly-Over	Distance (NM)	True Track / Magnetic Track	Upper Limit/ Lower Limit	Speed Limit (kts)	Remarks
RNAV1	CA	RWY34	-	-	-	336.6 / 341	A750+	-	-
RNAV1	CF	DUB	532957.8 / 0061825.6	Fly-By	-	336.6 / 341	-	-	-
RNAV1	TF	DWN29	534521.0 / 0061621.0	Fly-By	15.5	004.6 / 009	-	-	-
RNAV1	TF	ROTEV	540143.7 / 0060358.4	Fly-By	18.0	024.0 / 028	-	-	-

## SUROX1H CAT A/B SID RWY34

Navigation Performance	Path Terminator	WPT Name	Latitude (N), Longitude (W)	Fly-By or Fly-Over	Distance (NM)	True Track / Magnetic Track	Upper Limit/ Lower Limit	Speed Limit (kts)	Remarks
RNAV1	CA	RWY34	-	-	-	336.6 / 341	A750+	-	-
RNAV1	CF	DUB	532957.8 / 0061825.6	Fly-By	-	336.6 / 341	-	-	-
RNAV1	TF	DWN28	533413.0 / 0062520.0	Fly-By	5.9	316.0 / 320	-	-	-
RNAV1	TF	DWW04	534417.9 / 0065252.9	Fly-By	19.3	301.8 / 306	-	-	-
RNAV1	TF	SUROX	535948.0 / 0065936.5	Fly-By	16.0	345.7 / 350	-	-	-