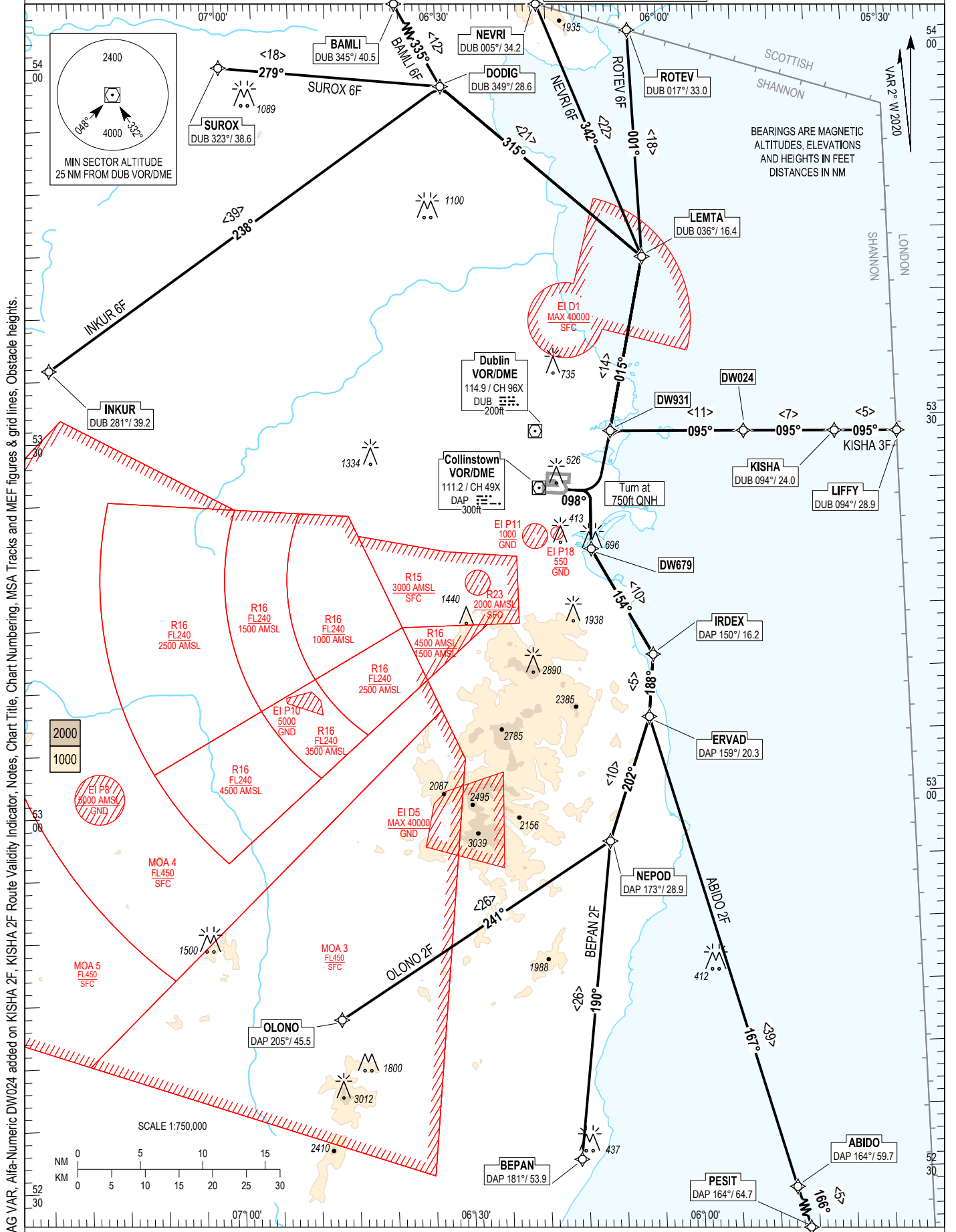


RNAV STANDARD DEPARTURE CHART
INSTRUMENT (SID) - ICAO

TRANS ALT 5000ft
TRANS LEVEL by ATC

ATIS	124.530
TWR	118.600
ACC Lower North	132.580
ACC Lower South	120.755

DUBLIN RWY 10R, CAT A, B
KISHA 3F, ABIDO 2F, BEPAN 2F, OLONO 2F,
INKUR 6F, SUROX 6F, BAMLI 6F, NEVRI 6F, ROTEV 6F.



CHANGE: MAG VAR, Alfa-Numeric DW024 added on KISHA 2F, KISHA 2F Route Validity Indicator, Notes, Chart Title, Chart Numbering, MSA Tracks and MEF figures & grid lines, Obstacle heights.

NOTES: 1. Climb gradient 6.6 % (400 ft/NM) (3.3% for obstacle clearance). 2. Turn above 750ft QNH (No turns before the DER). 3. Close-in obstacles exist. 4. MAX IAS 250kts below FL100.
 5. Integrity check fix available from RADAR. 6. Immediately after take off contact Dublin Departure North or South as appropriate. 7. KISHA SID traffic with a RFL of FL180 or above must be FL180 by BAVUD or GINIS respectively. 8. DME/DME or GNSS navigation required. 9. WARNING: Climb to 4000ft. Do not climb above 4000ft until instructed by ATC.

ABIDO2F CAT A/B SID RWY10R

ABID2F

Nav. Spec.	WPT Name	Latitude (N)/ Longitude (W)	Path Term	Fly-By Fly-over	True track / Mag track	Distance (NM)	Upper limit / Lower limit	Speed Limit (kts)	Remarks
RNAV1	RWY10	-	CA	-	095.3 / 098	-	- / A750+	-	-
RNAV1	DW679	532023.0 / 0061132.0	DF	Fly-By	-	-	-	-	Turn R
RNAV1	IRDEX	531145.1 / 0060350.1	TF	Fly-By	151.8 / 154	9.8	-	-	Turn L
RNAV1	ERVAD	530647.1 / 0060440.4	TF	Fly-By	185.8 / 188	5.0	-	-	Turn R
RNAV1	ABIDO	522843.7 / 0054744.1	TF	Fly-By	164.8 / 167	39.5	-	-	Turn L
RNAV1	PESIT	522356.6 / 0054524.0	TF	Fly-By	163.4 / 166	5.0	A4000 / -	-	-

BAMLI6F CAT A/B SID RWY10R

BAML6F

Nav. Spec.	WPT Name	Latitude (N)/ Longitude (W)	Path Term	Fly-By Fly-over	True track / Mag track	Distance (NM)	Upper limit / Lower limit	Speed Limit (kts)	Remarks
RNAV1	RWY10	-	CA	-	095.3 / 098	-	- / A750+	-	-
RNAV1	DW931	532945.0 / 0060823.2	DF	Fly-By	-	-	-	-	Turn L
RNAV1	LEMTA	534334.3 / 0060311.6	TF	Fly-By	012.6 / 015	14.2	-	-	-
RNAV1	DODIG	535746.0 / 0062934.0	TF	Fly-By	312.5 / 315	21.1	-	-	Turn L
RNAV1	BAMLI	540828.5 / 0063904.0	TF	Fly-By	332.5 / 335	12.1	A4000 / -	-	Turn R

BEPAN2F CAT A/B SID RWY10R

BEPA2F

Nav. Spec.	WPT Name	Latitude (N)/ Longitude (W)	Path Term	Fly-By Fly-over	True track / Mag track	Distance (NM)	Upper limit / Lower limit	Speed Limit (kts)	Remarks
RNAV1	RWY10	-	CA	-	095.3 / 098	-	- / A750+	-	-
RNAV1	DW679	532023.0 / 0061132.0	DF	Fly-By	-	-	-	-	Turn R
RNAV1	IRDEX	531145.1 / 0060350.1	TF	Fly-By	151.8 / 154	9.8	-	-	Turn L
RNAV1	ERVAD	530647.1 / 0060440.4	TF	Fly-By	185.8 / 188	5.0	-	-	Turn R
RNAV1	NEPOD	525657.2 / 0061029.8	TF	Fly-By	199.7 / 202	10.5	-	-	Turn R
RNAV1	BEPAN	523136.2 / 0061549.5	TF	Fly-By	187.3 / 190	25.6	A4000 / -	-	Turn L

INKUR6F CAT A/B SID RWY10R

INKU6F

Nav. Spec.	WPT Name	Latitude (N)/ Longitude (W)	Path Term	Fly-By Fly-over	True track / Mag track	Distance (NM)	Upper limit / Lower limit	Speed Limit (kts)	Remarks
RNAV1	RWY10	-	CA	-	095.3 / 098	-	- / A750+	-	-
RNAV1	DW931	532945.0 / 0060823.2	DF	Fly-By	-	-	-	-	Turn L
RNAV1	LEMTA	534334.3 / 0060311.6	TF	Fly-By	012.6 / 015	14.2	-	-	-
RNAV1	DODIG	535746.0 / 0062934.0	TF	Fly-By	312.5 / 315	21.1	-	-	Turn L
RNAV1	INKUR	533551.3 / 0072328.6	TF	Fly-By	235.9 / 238	38.8	A3000 / -	-	Turn L

KISHA3F CAT A/B SID RWY10R

KISH3F

Nav. Spec.	WPT Name	Latitude (N)/ Longitude (W)	Path Term	Fly-By Fly-over	True track / Mag track	Distance (NM)	Upper limit / Lower limit	Speed Limit (kts)	Remarks
RNAV1	RWY10	-	CA	-	095.3 / 098	-	- / A750+	-	-
RNAV1	DW931	532945.0 / 0060823.2	DF	Fly-By	-	-	-	-	Turn L
RNAV1	DW024	532920.2 / 0055032.5	TF	Fly-By	092.1 / 095	10.7	-	-	Turn R
RNAV1	KISHA	532901.7 / 0053821.6	TF	Fly-By	092.3 / 095	7.3	-	-	-
RNAV1	LIFFY	532848.3 / 0053000.0	TF	Fly-By	092.5 / 095	5.0	A4000 / -	-	-

NEVRI6F CAT A/B SID RWY10R

NEVR6F

Nav. Spec.	WPT Name	Latitude (N)/ Longitude (W)	Path Term	Fly-By Fly-over	True track / Mag track	Distance (NM)	Upper limit / Lower limit	Speed Limit (kts)	Remarks
RNAV1	RWY10	-	CA	-	095.3 / 098	-	- / A750+	-	-
RNAV1	DW931	532945.0 / 0060823.2	DF	Fly-By	-	-	-	-	Turn L
RNAV1	LEMTA	534334.3 / 0060311.6	TF	Fly-By	012.6 / 015	14.2	-	-	-
RNAV1	NEVRI	540406.0 / 0061611.4	TF	Fly-By	339.6 / 342	22.0	A4000 / -	-	Turn L

OLONO2F CAT A/B SID RWY10R

OLON2F

Nav. Spec.	WPT Name	Latitude (N)/ Longitude (W)	Path Term	Fly-By Fly-over	True track / Mag track	Distance (NM)	Upper limit / Lower limit	Speed Limit (kts)	Remarks
RNAV1	RWY10	-	CA	-	095.3 / 098	-	- / A750+	-	-
RNAV1	DW679	532023.0 / 0061132.0	DF	Fly-By	-	-	-	-	Turn R
RNAV1	IRDEX	531145.1 / 0060350.1	TF	Fly-By	151.8 / 154	9.8	-	-	Turn L
RNAV1	ERVAD	530647.1 / 0060440.4	TF	Fly-By	185.8 / 188	5.0	-	-	Turn R
RNAV1	NEPOD	525657.2 / 0061029.8	TF	Fly-By	199.7 / 202	10.5	-	-	Turn R
RNAV1	OLONO	524323.1 / 0064644.4	TF	Fly-By	238.5 / 241	25.8	A4000 / -	-	Turn R

ROTEV6F CAT A/B SID RWY10R

ROTE6F

Nav. Spec.	WPT Name	Latitude (N)/ Longitude (W)	Path Term	Fly-By Fly-over	True track / Mag track	Distance (NM)	Upper limit / Lower limit	Speed Limit (kts)	Remarks
RNAV1	RWY10	-	CA	-	095.3 / 098	-	- / A750+	-	-
RNAV1	DW931	532945.0 / 0060823.2	DF	Fly-By	-	-	-	-	Turn L
RNAV1	LEMTA	534334.3 / 0060311.6	TF	Fly-By	012.6 / 015	14.2	-	-	-
RNAV1	ROTEV	540143.7 / 0060358.4	TF	Fly-By	358.6 / 001	18.2	A4000 / -	-	Turn L

SUROX6F CAT A/B SID RWY10R

SURO6F

Nav. Spec.	WPT Name	Latitude (N)/ Longitude (W)	Path Term	Fly-By Fly-over	True track / Mag track	Distance (NM)	Upper limit / Lower limit	Speed Limit (kts)	Remarks
RNAV1	RWY10	-	CA	-	095.3 / 098	-	- / A750+	-	-
RNAV1	DW931	532945.0 / 0060823.2	DF	Fly-By	-	-	-	-	Turn L
RNAV1	LEMTA	534334.3 / 0060311.6	TF	Fly-By	012.6 / 015	14.2	-	-	-
RNAV1	DODIG	535746.0 / 0062934.0	TF	Fly-By	312.5 / 315	21.1	-	-	Turn L
RNAV1	SUROX	535948.0 / 0065936.5	TF	Fly-By	276.8 / 279	17.9	A4000 / -	-	Turn L