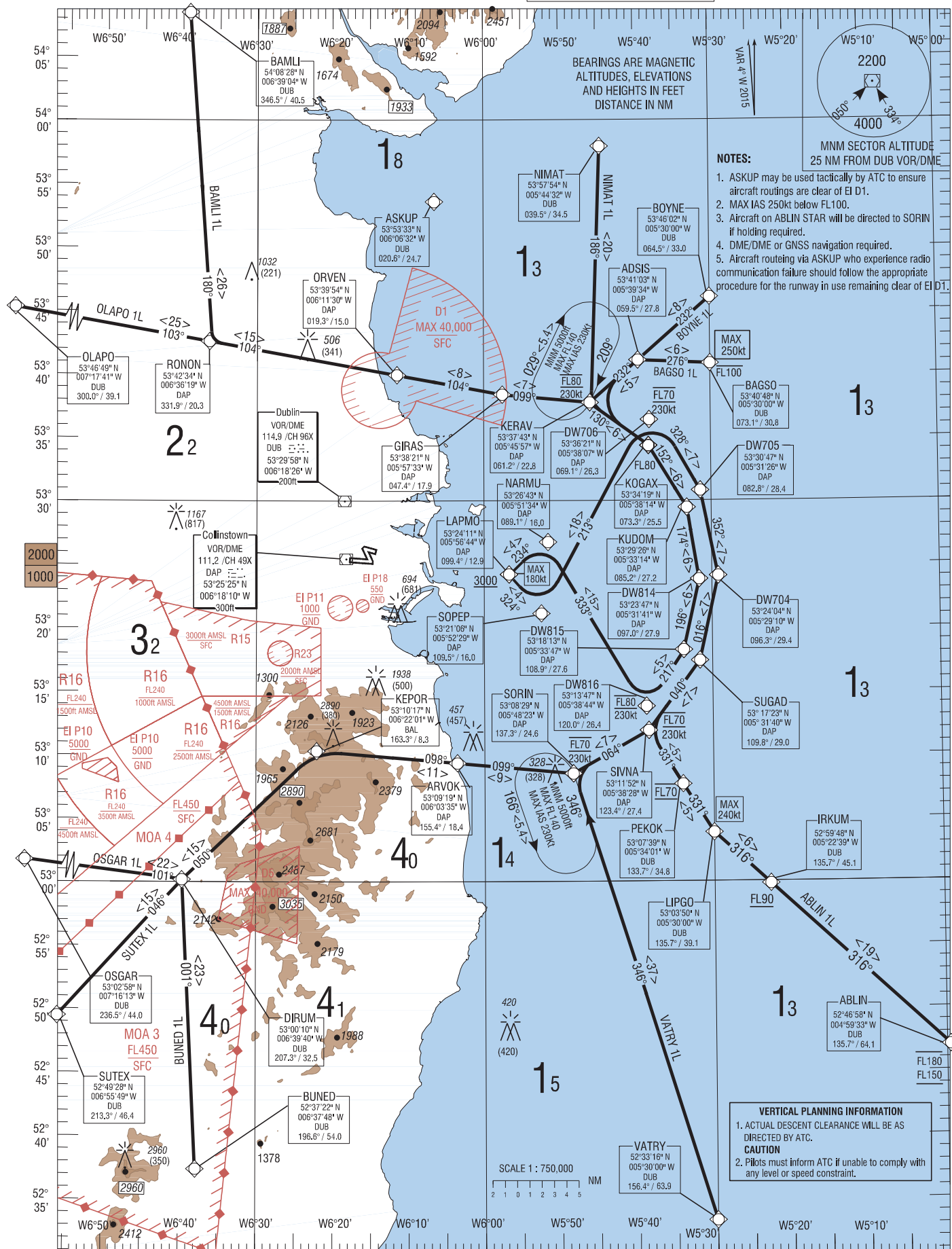


RNAV STANDARD ARRIVAL CHART  
INSTRUMENT (STAR) - ICAOTRANS ALT 5000ft  
TRANS LEVEL by ATC

ATIS 124.525  
APP 121.100  
DUBLIN ACC UPPER NORTH 129.175  
DUBLIN ACC UPPER SOUTH 124.650  
DUBLIN ACC LOWER NORTH 132.575  
DUBLIN ACC LOWER SOUTH 126.250

DUBLIN RWY 28

NIMAT 1L, BOYNE 1L, BAGSO 1L, ABLIN 1L, VATRY 1L,  
BUNED 1L, SUTEX 1L, OSGAR 1L, OLAPO 1L, BAMLI 1L



02 APR 2015

## BAGSOIL CAT A/B/C/D STAR RWY28

## BAGSIL

Navigation Performance	Path Terminator	WPT Name	Latitude (N), Longitude (W)	Fly-By or Fly-Over	Distance (NM)	True Track / Magnetic Track	Upper Limit/ Lower Limit	Speed Limit (kts)	Remarks
RNAV1	IF	BAGSO	534048.0 / 0053000.0	Fly-By	-	-	- FL100	250	-
RNAV1	TF	ADSI	534103.1 / 0053934.0	Fly-By	5.7	272.6 / 276	-	-	-
RNAV1	TF	KERAV	533742.7 / 0054557.3	Fly-By	5.1	228.7 / 232	@ FL80	230	-
RNAV1	TF	KOGAX	533418.6 / 0053814.1	Fly-By	5.7	126.5 / 130	@ FL80	230	L
RNAV1	TF	KUDOM	532925.8 / 0053314.3	Fly-By	5.7	148.6 / 152	@ FL80	230	-
RNAV1	TF	DW814	532347.5 / 0053141.1	Fly-By	5.7	170.6 / 174	@ FL80	230	-
RNAV1	TF	DW815	531812.9 / 0053346.6	Fly-By	5.7	192.7 / 196	@ FL80	230	-
RNAV1	TF	DW816	531346.9 / 0053844.4	Fly-By	5.3	213.9 / 217	@ FL80	230	-
RNAV1	TF	NARMU	532643.2 / 0055134.3	Fly-By	15.1	329.4 / 333	-	-	R
RNAV1	CF	LAPMO	532411.0 / 0055644.1	Fly-By	4.0	230.6 / 234	+ 3000ft	180	-

## BAMLIL CAT A/B/C/D STAR RWY28

## BAMLIL

Navigation Performance	Path Terminator	WPT Name	Latitude (N), Longitude (W)	Fly-By or Fly-Over	Distance (NM)	True Track / Magnetic Track	Upper Limit/ Lower Limit	Speed Limit (kts)	Remarks
RNAV1	IF	BAMLI	540828.5 / 0063904.0	Fly-By	-	-	-	-	-
RNAV1	TF	RONON	534233.9 / 0063619.2	Fly-By	26.0	176.4 / 180	-	-	-
RNAV1	TF	ORVEN	533953.5 / 0061129.8	Fly-By	15.0	100.1 / 104	-	-	-
RNAV1	TF	GIRAS	533821.0 / 0055733.2	Fly-By	8.4	100.4 / 104	-	-	-
RNAV1	TF	KERAV	533742.7 / 0054557.3	Fly-By	6.9	095.2 / 099	@ FL80	230	-
RNAV1	TF	KOGAX	533418.6 / 0053814.1	Fly-By	5.7	126.5 / 130	@ FL80	230	-
RNAV1	TF	KUDOM	532925.8 / 0053314.3	Fly-By	5.7	148.6 / 152	@ FL80	230	-
RNAV1	TF	DW814	532347.5 / 0053141.1	Fly-By	5.7	170.6 / 174	@ FL80	230	-
RNAV1	TF	DW815	531812.9 / 0053346.6	Fly-By	5.7	192.7 / 196	@ FL80	230	-
RNAV1	TF	DW816	531346.9 / 0053844.4	Fly-By	5.3	213.9 / 217	@ FL80	230	-
RNAV1	TF	NARMU	532643.2 / 0055134.3	Fly-By	15.1	329.4 / 333	-	-	R
RNAV1	CF	LAPMO	532411.0 / 0055644.1	Fly-By	4.0	230.6 / 234	+ 3000ft	180	-

## BOYNEIL CAT A/B/C/D STAR RWY28

## BOYNIL

Navigation Performance	Path Terminator	WPT Name	Latitude (N), Longitude (W)	Fly-By or Fly-Over	Distance (NM)	True Track / Magnetic Track	Upper Limit/ Lower Limit	Speed Limit (kts)	Remarks
RNAV1	IF	BOYNE	534601.6 / 0053000.0	Fly-By	-	-	-	-	-
RNAV1	TF	ADSI	534103.1 / 0053934.0	Fly-By	7.6	228.8 / 232	-	-	-
RNAV1	TF	KERAV	533742.7 / 0054557.3	Fly-By	5.1	228.7 / 232	@ FL80	230	-
RNAV1	TF	KOGAX	533418.6 / 0053814.1	Fly-By	5.7	126.5 / 130	@ FL80	230	L
RNAV1	TF	KUDOM	532925.8 / 0053314.3	Fly-By	5.7	148.6 / 152	@ FL80	230	-
RNAV1	TF	DW814	532347.5 / 0053141.1	Fly-By	5.7	170.6 / 174	@ FL80	230	-
RNAV1	TF	DW815	531812.9 / 0053346.6	Fly-By	5.7	192.7 / 196	@ FL80	230	-
RNAV1	TF	DW816	531346.9 / 0053844.4	Fly-By	5.3	213.9 / 217	@ FL80	230	-
RNAV1	TF	NARMU	532643.2 / 0055134.3	Fly-By	15.1	329.4 / 333	-	-	R
RNAV1	CF	LAPMO	532411.0 / 0055644.1	Fly-By	4.0	230.6 / 234	+ 3000ft	180	-

## BUNEDIL CAT A/B/C/D STAR RWY28

## BUNEIL

Navigation Performance	Path Terminator	WPT Name	Latitude (N), Longitude (W)	Fly-By or Fly-Over	Distance (NM)	True Track / Magnetic Track	Upper Limit/ Lower Limit	Speed Limit (kts)	Remarks
RNAV1	IF	BUNED	523721.9 / 0063748.2	Fly-By	-	-	-	-	-
RNAV1	TF	DIRUM	530009.7 / 0063940.0	Fly-By	22.9	357.2 / 001	-	-	-
RNAV1	TF	KEPOR	531016.5 / 0062200.7	Fly-By	14.7	046.3 / 050	-	-	-
RNAV1	TF	ARVOK	530919.0 / 0060335.1	Fly-By	11.1	094.8 / 098	-	-	-
RNAV1	TF	SORIN	530829.3 / 0054822.5	Fly-By	9.2	095.1 / 099	@ FL70	230	-
RNAV1	TF	SIVNA	531152.3 / 0053827.7	Fly-By	6.9	060.3 / 064	@ FL70	230	-
RNAV1	TF	SUGAD	531722.5 / 0053139.8	Fly-By	6.9	036.5 / 040	@ FL70	230	-
RNAV1	TF	DW704	532403.7 / 0052910.1	Fly-By	6.9	012.6 / 016	@ FL70	230	-
RNAV1	TF	DW705	533046.6 / 0053126.4	Fly-By	6.9	348.6 / 352	@ FL70	230	-
RNAV1	TF	DW706	533621.3 / 0053806.9	Fly-By	6.9	324.6 / 328	@ FL70	230	-
RNAV1	TF	SOPEP	532105.9 / 0055229.4	Fly-By	17.5	209.4 / 213	-	-	L
RNAV1	CF	LAPMO	532411.0 / 0055644.1	Fly-By	4.0	320.6 / 324	+ 3000ft	180	-

## ABLINIL CAT A/B/C/D STAR RWY28

## ABLIIL

Navigation Performance	Path Terminator	WPT Name	Latitude (N), Longitude (W)	Fly-By or Fly-Over	Distance (NM)	True Track / Magnetic Track	Upper Limit/ Lower Limit	Speed Limit (kts)	Remarks
RNAV1	IF	ABLIN	524658.0 / 0045933.0	Fly-By	-	-	-FL180 +FL150	-	-
RNAV1	TF	IRKUM	525948.0 / 0052239.0	Fly-By	19.0	312.7 / 316	+FL90	-	-
RNAV1	TF	LIPGO	530350.1 / 0053000.0	Fly-By	6.0	312.4 / 316	-	240	-
RNAV1	TF	PEKOK	530739.3 / 0053400.8	Fly-By	4.5	327.7 / 331	@ FL70	-	-
RNAV1	TF	SIVNA	531152.3 / 0053827.7	Fly-By	5.0	327.7 / 331	@ FL70	230	-
RNAV1	TF	SUGAD	531722.5 / 0053139.8	Fly-By	6.9	036.5 / 040	@ FL70	230	-
RNAV1	TF	DW704	532403.7 / 0052910.1	Fly-By	6.9	012.6 / 016	@ FL70	230	-
RNAV1	TF	DW705	533046.6 / 0053126.4	Fly-By	6.9	348.6 / 352	@ FL70	230	-
RNAV1	TF	DW706	533621.3 / 0053806.9	Fly-By	6.9	324.6 / 328	@ FL70	230	-
RNAV1	TF	SOPEP	532105.9 / 0055229.4	Fly-By	17.5	209.4 / 213	-	-	L
RNAV1	CF	LAPMO	532411.0 / 0055644.1	Fly-By	4.0	320.6 / 324	+ 3000ft	180	-

## NIMATIL CAT A/B/C/D STAR RWY28

## NIMA1L

Navigation Performance	Path Terminator	WPT Name	Latitude (N), Longitude (W)	Fly-By or Fly-Over	Distance (NM)	True Track / Magnetic Track	Upper Limit/ Lower Limit	Speed Limit (kts)	Remarks
RNAV1	IF	NIMAT	535754.1 / 0054431.7	Fly-By	-	-	-	-	-
RNAV1	TF	KERAV	533742.7 / 0054557.3	Fly-By	20.2	182.4 / 186	@ FL80	230	-
RNAV1	TF	KOGAX	533418.6 / 0053814.1	Fly-By	5.7	126.5 / 130	@ FL80	230	-
RNAV1	TF	KUDOM	532925.8 / 0053314.3	Fly-By	5.7	148.6 / 152	@ FL80	230	-
RNAV1	TF	DW814	532347.5 / 0053141.1	Fly-By	5.7	170.6 / 174	@ FL80	230	-
RNAV1	TF	DW815	531812.9 / 0053346.6	Fly-By	5.7	192.7 / 196	@ FL80	230	-
RNAV1	TF	DW816	531346.9 / 0053844.4	Fly-By	5.3	213.9 / 217	@ FL80	230	-
RNAV1	TF	NARMU	532643.2 / 0055134.3	Fly-By	15.1	329.4 / 333	-	-	R
RNAV1	CF	LAPMO	532411.0 / 0055644.1	Fly-By	4.0	230.6 / 234	+ 3000ft	180	-

## OLAPO1L CAT A/B/C/D STAR RWY28

## OLAP1L

Navigation Performance	Path Terminator	WPT Name	Latitude (N), Longitude (W)	Fly-By or Fly-Over	Distance (NM)	True Track / Magnetic Track	Upper Limit/ Lower Limit	Speed Limit (kts)	Remarks
RNAV1	IF	OLAPO	534649.0 / 0071740.6	Fly-By	-	-	-	-	-
RNAV1	TF	RONON	534233.9 / 0063619.2	Fly-By	24.9	099.6 / 103	-	-	-
RNAV1	TF	ORVEN	533953.5 / 0061129.8	Fly-By	15.0	100.1 / 104	-	-	-
RNAV1	TF	GIRAS	533821.0 / 0055733.2	Fly-By	8.4	100.4 / 104	-	-	-
RNAV1	TF	KERAV	533742.7 / 0054557.3	Fly-By	6.9	095.2 / 099	@ FL80	230	-
RNAV1	TF	KOGAX	533418.6 / 0053814.1	Fly-By	5.7	126.5 / 130	@ FL80	230	-
RNAV1	TF	KUDOM	532925.8 / 0053314.3	Fly-By	5.7	148.6 / 152	@ FL80	230	-
RNAV1	TF	DW814	532347.5 / 0053141.1	Fly-By	5.7	170.6 / 174	@ FL80	230	-
RNAV1	TF	DW815	531812.9 / 0053346.6	Fly-By	5.7	192.7 / 196	@ FL80	230	-
RNAV1	TF	DW816	531346.9 / 0053844.4	Fly-By	5.3	213.9 / 217	@ FL80	230	-
RNAV1	TF	NARMU	532643.2 / 0055134.3	Fly-By	15.1	329.4 / 333	-	-	R
RNAV1	CF	LAPMO	532411.0 / 0055644.1	Fly-By	4.0	230.6 / 234	+ 3000ft	180	-

## OSGAR1L CAT A/B/C/D STAR RWY28

## OSGAIL

Navigation Performance	Path Terminator	WPT Name	Latitude (N), Longitude (W)	Fly-By or Fly-Over	Distance (NM)	True Track / Magnetic Track	Upper Limit/ Lower Limit	Speed Limit (kts)	Remarks
RNAV1	IF	OSGAR	530257.9 / 0071612.8	Fly-By	-	-	-	-	-
RNAV1	TF	DIRUM	530009.7 / 0063940.0	Fly-By	22.2	097.0 / 101	-	-	-
RNAV1	TF	KEPOR	531016.5 / 0062200.7	Fly-By	14.7	046.3 / 050	-	-	-
RNAV1	TF	ARVOK	530919.0 / 0060335.1	Fly-By	11.1	094.8 / 098	-	-	-
RNAV1	TF	SORIN	530829.3 / 0054822.5	Fly-By	9.2	095.1 / 099	@ FL70	230	-
RNAV1	TF	SIVNA	531152.3 / 0053827.7	Fly-By	6.9	060.3 / 064	@ FL70	230	-
RNAV1	TF	SUGAD	531722.5 / 0053139.8	Fly-By	6.9	036.5 / 040	@ FL70	230	-
RNAV1	TF	DW704	532403.7 / 0052910.1	Fly-By	6.9	012.6 / 016	@ FL70	230	-
RNAV1	TF	DW705	533046.6 / 0053126.4	Fly-By	6.9	348.6 / 352	@ FL70	230	-
RNAV1	TF	DW706	533621.3 / 0053806.9	Fly-By	6.9	324.6 / 328	@ FL70	230	-
RNAV1	TF	SOPEP	532105.9 / 0055229.4	Fly-By	17.5	209.4 / 213	-	-	L
RNAV1	CF	LAPMO	532411.0 / 0055644.1	Fly-By	4.0	320.6 / 324	+ 3000ft	180	-

## SUTEX1L CAT A/B/C/D STAR RWY28

## SUTE1L

Navigation Performance	Path Terminator	WPT Name	Latitude (N), Longitude (W)	Fly-By or Fly-Over	Distance (NM)	True Track / Magnetic Track	Upper Limit/ Lower Limit	Speed Limit (kts)	Remarks
RNAV1	IF	SUTEX	524927.7 / 0065549.3	Fly-By	-	-	-	-	-
RNAV1	TF	DIRUM	530009.7 / 0063940.0	Fly-By	14.5	042.3 / 046	-	-	-
RNAV1	TF	KEPOR	531016.5 / 0062200.7	Fly-By	14.7	046.3 / 050	-	-	-
RNAV1	TF	ARVOK	530919.0 / 0060335.1	Fly-By	11.1	094.8 / 098	-	-	-
RNAV1	TF	SORIN	530829.3 / 0054822.5	Fly-By	9.2	095.1 / 099	@ FL70	230	-
RNAV1	TF	SIVNA	531152.3 / 0053827.7	Fly-By	6.9	060.3 / 064	@ FL70	230	-
RNAV1	TF	SUGAD	531722.5 / 0053139.8	Fly-By	6.9	036.5 / 040	@ FL70	230	-
RNAV1	TF	DW704	532403.7 / 0052910.1	Fly-By	6.9	012.6 / 016	@ FL70	230	-
RNAV1	TF	DW705	533046.6 / 0053126.4	Fly-By	6.9	348.6 / 352	@ FL70	230	-
RNAV1	TF	DW706	533621.3 / 0053806.9	Fly-By	6.9	324.6 / 328	@ FL70	230	-
RNAV1	TF	SOPEP	532105.9 / 0055229.4	Fly-By	17.5	209.4 / 213	-	-	L
RNAV1	CF	LAPMO	532411.0 / 0055644.1	Fly-By	4.0	320.6 / 324	+ 3000ft	180	-

## VATRY1L CAT A/B/C/D STAR RWY28

## VATR1L

Navigation Performance	Path Terminator	WPT Name	Latitude (N), Longitude (W)	Fly-By or Fly-Over	Distance (NM)	True Track / Magnetic Track	Upper Limit/ Lower Limit	Speed Limit (kts)	Remarks
RNAV1	IF	VATRY	523316.0 / 0053000.0	Fly-By	-	-	-	-	-
RNAV1	TF	SORIN	530829.3 / 0054822.5	Fly-By	37.0	342.6 / 346	@ FL70	230	-
RNAV1	TF	SIVNA	531152.3 / 0053827.7	Fly-By	6.9	060.3 / 064	@ FL70	230	-
RNAV1	TF	SUGAD	531722.5 / 0053139.8	Fly-By	6.9	036.5 / 040	@ FL70	230	-
RNAV1	TF	DW704	532403.7 / 0052910.1	Fly-By	6.9	012.6 / 016	@ FL70	230	-
RNAV1	TF	DW705	533046.6 / 0053126.4	Fly-By	6.9	348.6 / 352	@ FL70	230	-
RNAV1	TF	DW706	533621.3 / 0053806.9	Fly-By	6.9	324.6 / 328	@ FL70	230	-
RNAV1	TF	SOPEP	532105.9 / 0055229.4	Fly-By	17.5	209.4 / 213	-	-	L
RNAV1	CF	LAPMO	532411.0 / 0055644.1	Fly-By	4.0	320.6 / 324	+ 3000ft	180	-

## Hold Identification – EIDW AD 2.24-17.1

Holding Fix	Latitude (N) / Longitude (W)	Inbound True Track (degrees)	Inbound Mag Track (degrees)	Maximum Indicated Airspeed (kts)	Maximum/Minimum Holding Altitude/ Level (FL/ft)	Distance outbound Limit (NM)	Direction of Turn
KERAV	533742.7 / 0054557.3	205.5	209	230	FL140/5000	5.4	R
SORIN	530829.3 / 0054822.5	342.4	346	230	FL140/3000	5.4	L

THIS PAGE INTENTIONALLY LEFT BLANK