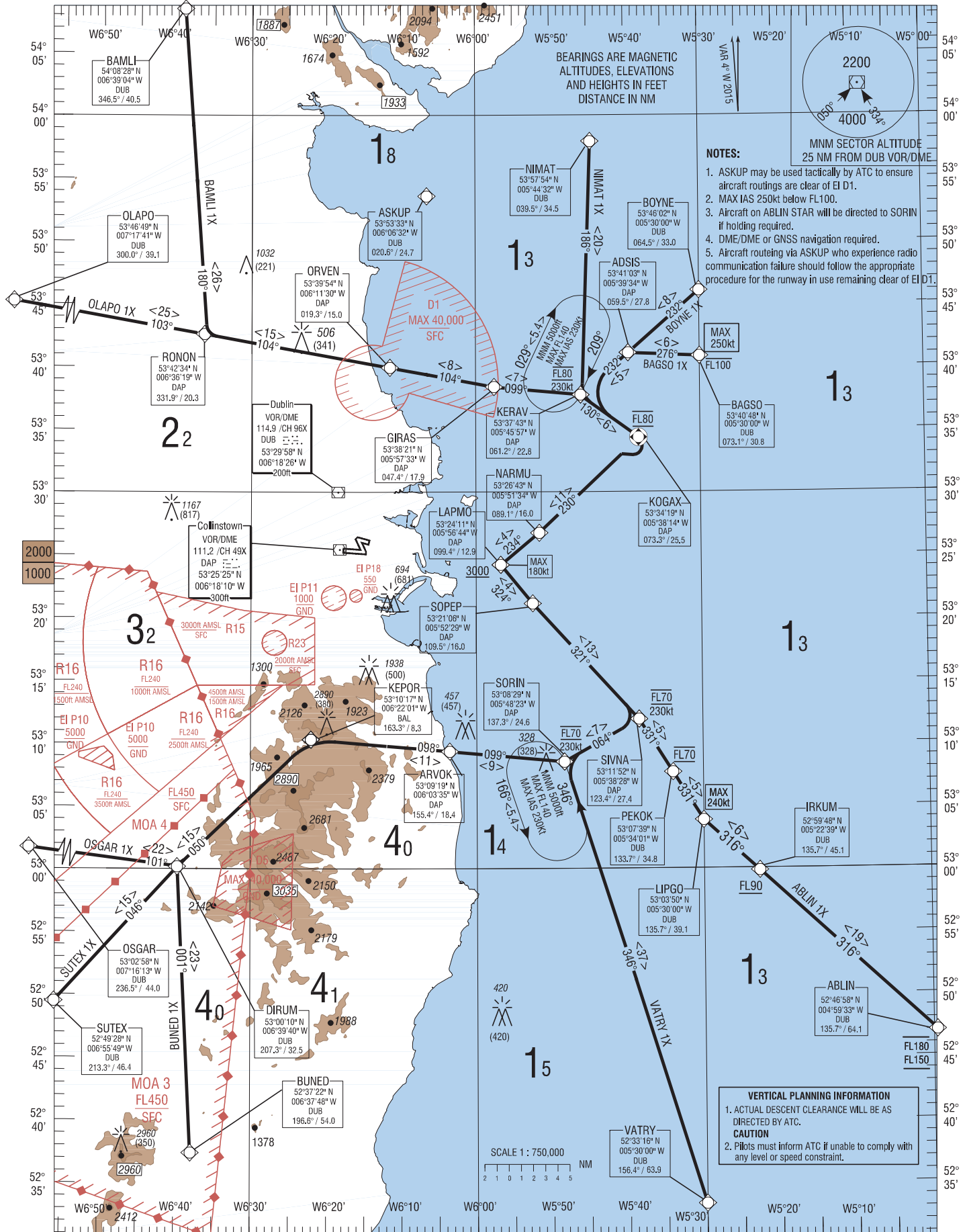


RNAV STANDARD ARRIVAL CHART
INSTRUMENT (STAR) - ICAOTRANS ALT 5000ft
TRANS LEVEL by ATC

ATIS	124.525
APP	121.100
DUBLIN ACC UPPER NORTH	129.175
DUBLIN ACC UPPER SOUTH	124.650
DUBLIN ACC LOWER NORTH	132.575
DUBLIN ACC LOWER SOUTH	126.250

DUBLIN RWY 28

NIMAT 1X, BOYNE 1X, BAGSO 1X, ABLIN 1X, VATRY 1X,
BUNED 1X, SUTEX 1X, OSGAR 1X, OLAP0 1X, BAMLI 1X.

02 APR 2015

BAGSOIX CAT A/B/C/D STAR RWY28

BAGSIX

Navigation Performance	Path Terminator	WPT Name	Latitude (N), Longitude (W)	Fly-By or Fly-Over	Distance (NM)	True Track / Magnetic Track	Upper Limit/ Lower Limit	Speed Limit (kts)	Remarks
RNAV1	IF	BAGSO	534048.0 / 0053000.0	Fly-By	-	-	- FL100	250	-
RNAV1	TF	ADSI	534103.1 / 0053934.0	Fly-By	5.7	272.6 / 276	-	-	-
RNAV1	TF	KERAV	533742.7 / 0054557.3	Fly-By	5.1	228.7 / 232	@ FL80	230	-
RNAV1	TF	KOGAX	533418.6 / 0053814.1	Fly-Over	5.7	126.5 / 130	@ FL80	230	L
RNAV1	TF	NARMU	532643.2 / 0055134.3	Fly-By	11.0	226.4 / 230	-	-	R
RNAV1	CF	LAPMO	532411.0 / 0055644.1	Fly-By	4.0	230.6 / 234	+ 3000ft	180	-

BAMLIX CAT A/B/C/D STAR RWY28

BAMLIX

Navigation Performance	Path Terminator	WPT Name	Latitude (N), Longitude (W)	Fly-By or Fly-Over	Distance (NM)	True Track / Magnetic Track	Upper Limit/ Lower Limit	Speed Limit (kts)	Remarks
RNAV1	IF	BAMLI	540828.5 / 0063904.0	Fly-By	-	-	-	-	-
RNAV1	TF	RONON	534233.9 / 0063619.2	Fly-By	26.0	176.4 / 180	-	-	-
RNAV1	TF	ORVEN	533953.5 / 0061129.8	Fly-By	15.0	100.1 / 104	-	-	-
RNAV1	TF	GIRAS	533821.0 / 0055733.2	Fly-By	8.4	100.4 / 104	-	-	-
RNAV1	TF	KERAV	533742.7 / 0054557.3	Fly-By	6.9	095.2 / 099	@ FL80	230	-
RNAV1	TF	KOGAX	533418.6 / 0053814.1	Fly-Over	5.7	126.5 / 130	@ FL80	230	-
RNAV1	TF	NARMU	532643.2 / 0055134.3	Fly-By	11.0	226.4 / 230	-	-	R
RNAV1	CF	LAPMO	532411.0 / 0055644.1	Fly-By	4.0	230.6 / 234	+ 3000ft	180	-

BOYNEIX CAT A/B/C/D STAR RWY28

BOYNIX

Navigation Performance	Path Terminator	WPT Name	Latitude (N), Longitude (W)	Fly-By or Fly-Over	Distance (NM)	True Track / Magnetic Track	Upper Limit/ Lower Limit	Speed Limit (kts)	Remarks
RNAV1	IF	BOYNE	534601.6 / 0053000.0	Fly-By	-	-	-	-	-
RNAV1	TF	ADSI	534103.1 / 0053934.0	Fly-By	7.6	228.8 / 232	-	-	-
RNAV1	TF	KERAV	533742.7 / 0054557.3	Fly-By	5.1	228.7 / 232	@ FL80	230	-
RNAV1	TF	KOGAX	533418.6 / 0053814.1	Fly-Over	5.7	126.5 / 130	@ FL80	230	L
RNAV1	TF	NARMU	532643.2 / 0055134.3	Fly-By	11.0	226.4 / 230	-	-	R
RNAV1	CF	LAPMO	532411.0 / 0055644.1	Fly-By	4.0	230.6 / 234	+ 3000ft	180	-

BUNEDIX CAT A/B/C/D STAR RWY28

BUNEIX

Navigation Performance	Path Terminator	WPT Name	Latitude (N), Longitude (W)	Fly-By or Fly-Over	Distance (NM)	True Track / Magnetic Track	Upper Limit/ Lower Limit	Speed Limit (kts)	Remarks
RNAV1	IF	BUNED	523721.9 / 0063748.2	Fly-By	-	-	-	-	-
RNAV1	TF	DIRUM	530009.7 / 0063940.0	Fly-By	22.9	357.2 / 001	-	-	-
RNAV1	TF	KEPOR	531016.5 / 0062200.7	Fly-By	14.7	046.3 / 050	-	-	-
RNAV1	TF	ARVOK	530919.0 / 0060335.1	Fly-By	11.1	094.8 / 098	-	-	-
RNAV1	TF	SORIN	530829.3 / 0054822.5	Fly-By	9.2	095.1 / 099	@ FL70	230	-
RNAV1	TF	SIVNA	531152.3 / 0053827.7	Fly-By	6.9	060.3 / 064	@ FL70	230	-
RNAV1	TF	SOPEP	532105.9 / 0055229.4	Fly-By	12.5	317.8 / 321	-	-	L
RNAV1	CF	LAPMO	532411.0 / 0055644.1	Fly-By	4.0	320.6 / 324	+ 3000ft	180	-

ABLINIX CAT A/B/C/D STAR RWY28

ABLIIX

Navigation Performance	Path Terminator	WPT Name	Latitude (N), Longitude (W)	Fly-By or Fly-Over	Distance (NM)	True Track / Magnetic Track	Upper Limit/ Lower Limit	Speed Limit (kts)	Remarks
RNAV1	IF	ABLIN	524658.0 / 0045933.0	Fly-By	-	-	- FL180 + FL150	-	-
RNAV1	TF	IRKUM	525948.0 / 0052239.0	Fly-By	19.0	312.7 / 316	+ FL90	-	-
RNAV1	TF	LIPGO	530350.1 / 0053000.0	Fly-By	6.0	312.4 / 316	-	240	-
RNAV1	TF	PEKOK	530739.3 / 0053400.8	Fly-By	4.5	327.7 / 331	@ FL70	-	-
RNAV1	TF	SIVNA	531152.3 / 0053827.7	Fly-By	5.0	327.7 / 331	@ FL70	230	-
RNAV1	TF	SOPEP	532105.9 / 0055229.4	Fly-By	12.5	317.8 / 321	-	-	L
RNAV1	CF	LAPMO	532411.0 / 0055644.1	Fly-By	4.0	320.6 / 324	+ 3000ft	180	-

NIMATIX CAT A/B/C/D STAR RWY28

NIMAIX

Navigation Performance	Path Terminator	WPT Name	Latitude (N), Longitude (W)	Fly-By or Fly-Over	Distance (NM)	True Track / Magnetic Track	Upper Limit/ Lower Limit	Speed Limit (kts)	Remarks
RNAV1	IF	NIMAT	535754.1 / 0054431.7	Fly-By	-	-	-	-	-
RNAV1	TF	KERAV	533742.7 / 0054557.3	Fly-By	20.2	182.4 / 186	@ FL80	230	-
RNAV1	TF	KOGAX	533418.6 / 0053814.1	Fly-Over	5.7	126.5 / 130	@ FL80	230	-
RNAV1	TF	NARMU	532643.2 / 0055134.3	Fly-By	11.0	226.4 / 230	-	-	R
RNAV1	CF	LAPMO	532411.0 / 0055644.1	Fly-By	4.0	230.6 / 234	+ 3000ft	180	-

OLAPOIX CAT A/B/C/D STAR RWY28

OLAPIX

Navigation Performance	Path Terminator	WPT Name	Latitude (N), Longitude (W)	Fly-By or Fly-Over	Distance (NM)	True Track / Magnetic Track	Upper Limit/ Lower Limit	Speed Limit (kts)	Remarks
RNAV1	IF	OLAPO	534649.0 / 0071740.6	Fly-By	-	-	-	-	-
RNAV1	TF	RONON	534233.9 / 0063619.2	Fly-By	24.9	099.6 / 103	-	-	-
RNAV1	TF	ORVEN	533953.5 / 0061129.8	Fly-By	15.0	100.1 / 104	-	-	-
RNAV1	TF	GIRAS	533821.0 / 0055733.2	Fly-By	8.4	100.4 / 104	-	-	-
RNAV1	TF	KERAV	533742.7 / 0054557.3	Fly-By	6.9	095.2 / 099	@ FL80	230	-
RNAV1	TF	KOGAX	533418.6 / 0053814.1	Fly-Over	5.7	126.5 / 130	@ FL80	230	-
RNAV1	TF	NARMU	532643.2 / 0055134.3	Fly-By	11.0	226.4 / 230	-	-	R
RNAV1	CF	LAPMO	532411.0 / 0055644.1	Fly-By	4.0	230.6 / 234	+ 3000ft	180	-

OSGAR1X CAT A/B/C/D STAR RWY28

OSGA1X

Navigation Performance	Path Terminator	WPT Name	Latitude (N), Longitude (W)	Fly-By or Fly-Over	Distance (NM)	True Track / Magnetic Track	Upper Limit/ Lower Limit	Speed Limit (kts)	Remarks
RNAV1	IF	OSGAR	530257.9 / 0071612.8	Fly-By	-	-	-	-	-
RNAV1	TF	DIRUM	530009.7 / 0063940.0	Fly-By	22.2	097.0 / 101	-	-	-
RNAV1	TF	KEPOR	531016.5 / 0062200.7	Fly-By	14.7	046.3 / 050	-	-	-
RNAV1	TF	ARVOK	530919.0 / 0060335.1	Fly-By	11.1	094.8 / 098	-	-	-
RNAV1	TF	SORIN	530829.3 / 0054822.5	Fly-By	9.2	095.1 / 099	@ FL70	230	-
RNAV1	TF	SIVNA	531152.3 / 0053827.7	Fly-By	6.9	060.3 / 064	@ FL70	230	-
RNAV1	TF	SOPEP	532105.9 / 0055229.4	Fly-By	12.5	317.8 / 321	-	-	L
RNAV1	CF	LAPMO	532411.0 / 0055644.1	Fly-By	4.0	320.6 / 324	+ 3000ft	180	R

SUTEX1X CAT A/B/C/D STAR RWY28

SUTE1X

Navigation Performance	Path Terminator	WPT Name	Latitude (N), Longitude (W)	Fly-By or Fly-Over	Distance (NM)	True Track / Magnetic Track	Upper Limit/ Lower Limit	Speed Limit (kts)	Remarks
RNAV1	IF	SUTEX	524927.7 / 0065549.3	Fly-By	-	-	-	-	-
RNAV1	TF	DIRUM	530009.7 / 0063940.0	Fly-By	14.5	042.3 / 046	-	-	-
RNAV1	TF	KEPOR	531016.5 / 0062200.7	Fly-By	14.7	046.3 / 050	-	-	-
RNAV1	TF	ARVOK	530919.0 / 0060335.1	Fly-By	11.1	094.8 / 098	-	-	-
RNAV1	TF	SORIN	530829.3 / 0054822.5	Fly-By	9.2	095.1 / 099	@ FL70	230	-
RNAV1	TF	SIVNA	531152.3 / 0053827.7	Fly-By	6.9	060.3 / 064	@ FL70	230	-
RNAV1	TF	SOPEP	532105.9 / 0055229.4	Fly-By	12.5	317.8 / 321	-	-	L
RNAV1	CF	LAPMO	532411.0 / 0055644.1	Fly-By	4.0	320.6 / 324	+ 3000ft	180	-

VATRY1X CAT A/B/C/D STAR RWY28

VATR1X

Navigation Performance	Path Terminator	WPT Name	Latitude (N), Longitude (W)	Fly-By or Fly-Over	Distance (NM)	True Track / Magnetic Track	Upper Limit/ Lower Limit	Speed Limit (kts)	Remarks
RNAV1	IF	VATRY	523316.0 / 0053000.0	Fly-By	-	-	-	-	-
RNAV1	TF	SORIN	530829.3 / 0054822.5	Fly-By	37.0	342.6 / 346	@ FL70	230	-
RNAV1	TF	SIVNA	531152.3 / 0053827.7	Fly-By	6.9	060.3 / 064	@ FL70	230	-
RNAV1	TF	SOPEP	532105.9 / 0055229.4	Fly-By	12.5	317.8 / 321	-	-	L
RNAV1	CF	LAPMO	532411.0 / 0055644.1	Fly-By	4.0	320.6 / 324	+ 3000ft	180	-

Hold Identification – EIDW AD 2.24-17.4

Holding Fix	Latitude (N) / Longitude (W)	Inbound True Track (degrees)	Inbound Mag Track (degrees)	Maximum Indicated Airspeed (kts)	Maximum/Minimum Holding Altitude/ Level (FL/ft)	Distance outbound Limit (NM)	Direction of Turn
KERAV	533742.7 / 0054557.3	205.5	209	230	FL140/5000	5.4	R
SORIN	530829.3 / 0054822.5	342.4	346	230	FL140/3000	5.4	L

THIS PAGE INTENTIONALLY LEFT BLANK