

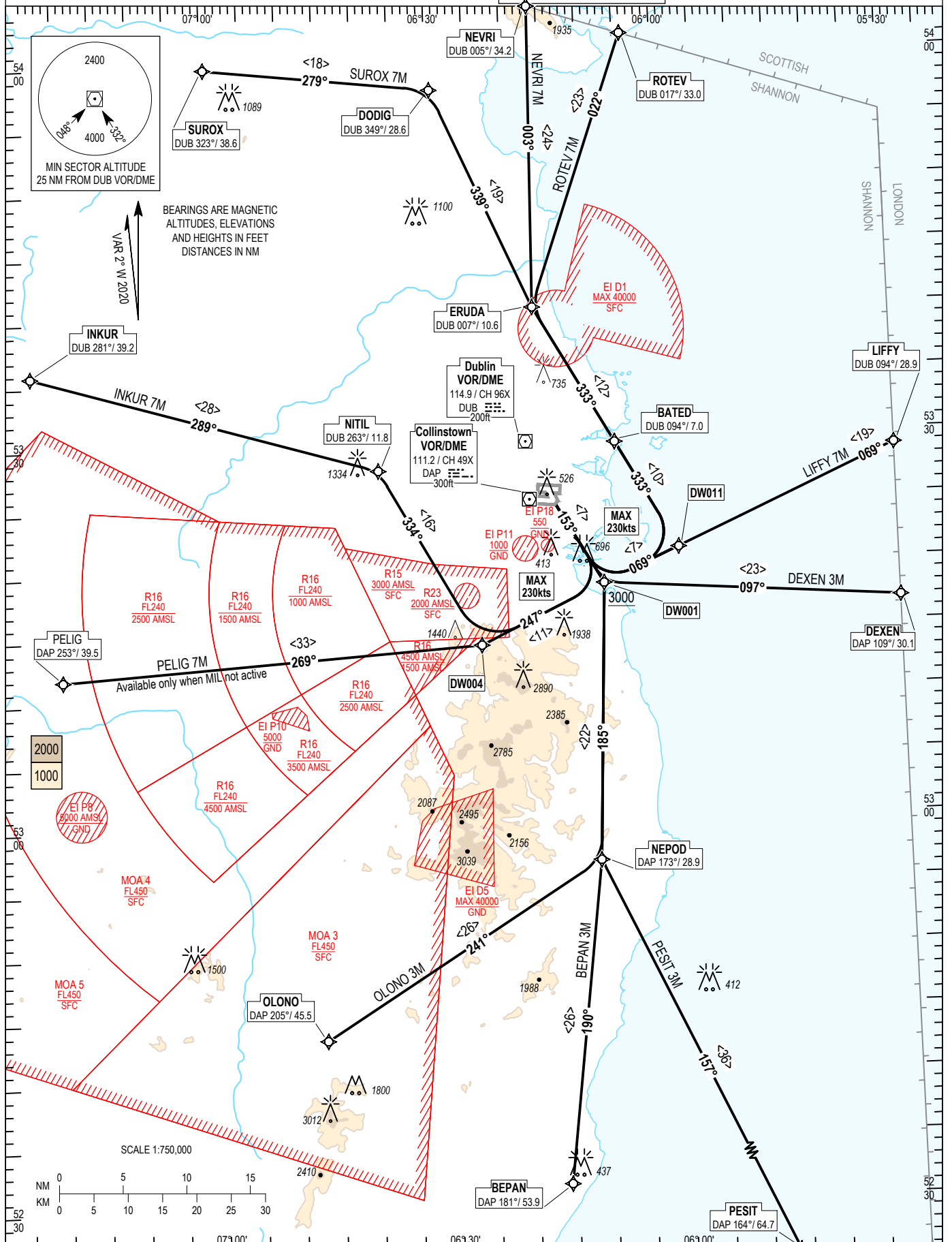
RNAV STANDARD DEPARTURE CHART
INSTRUMENT (SID) - ICAO

TRANS ALT 5000ft
TRANS LEVEL by ATC

ATIS TWR	124.530
ACC Lower North	118.600
ACC Lower South	132.580
	120.755

DUBLIN RWY 16, CAT C, D

LIFFY 7M, DEXEN 3M, PESIT 3M, BEPAN 3M, OLONO 3M,
PELIG 7M, INKUR 7M, SUROX 7M, NEVRI 7M, ROTEV 7M.



NOTES: 1. Climb gradient 9.1% (550 ft/NM) (3.3% for obstacle clearance, INKUR & PELIG 3.7% up to 3000 ft for obstacle clearance). 2. MAX IAS 250kts below FL100. 3. Data fix integrity available from RADAR. 4. DEXEN - Aircraft must be FL200 or above by LUTIP. 5. On passing 2000ft contact Dublin Departure North or South as appropriate. 6. For LIFFY and DEXEN MAX IAS: 290kt above FL100. 7. LIFFY SID traffic with an RFL of FL180 or above must be FL180 by BAVUD, GINIS or ABGEP respectively. 8. Close-in obstacles exist. 9. Climb to FL90. Do not climb above FL90 until instructed by ATC. 10. Continuous climb to 4000ft (9.1% 550ft/NM) required on INKUR & PELIG for separation from military operations at 3000ft in R15. 11. DME/DME or GNSS navigation required.

CHANGE: MAG VAR, Speed restriction change, Chart Numbering, Frequencies, MSA Tracks, Route Validity Indicators, Notes, New Alfa-Numeric DW011 and Removal of DW002, removal of MEF figures & grid lines.

BEPAN3M CAT C/D SID RWY16

BEPA3M

Nav. Spec.	WPT Name	Latitude (N)/ Longitude (W)	Path Term	Fly-By Fly-over	True track / Mag track	Distance (NM)	Upper limit / Lower limit	Speed Limit (kts)	Remarks
RNAV1	DW001	531841.3 / 0060846.5	CF	Fly-By	150.2 / 153	-	- / A3000	-	142° DAP / D8.8 DAP
RNAV1	NEPOD	525657.2 / 0061029.8	TF	Fly-By	182.7 / 185	21.8	-	-	Turn R
RNAV1	BEPAN	523136.2 / 0061549.5	TF	Fly-By	187.3 / 190	25.6	-	-	Turn R

DEXEN3M CAT C/D SID RWY16

DEXE3M

Nav. Spec.	WPT Name	Latitude (N)/ Longitude (W)	Path Term	Fly-By Fly-over	True track / Mag track	Distance (NM)	Upper limit / Lower limit	Speed Limit (kts)	Remarks
RNAV1	DW001	531841.3 / 0060846.5	CF	Fly-By	150.2 / 153	-	- / A3000	-	142° DAP / D8.8 DAP
RNAV1	DEXEN	531649.4 / 0053000.0	TF	Fly-By	094.3 / 097	23.3	-	-	Turn L

INKUR7M CAT C/D SID RWY16

INKU7M

Nav. Spec.	WPT Name	Latitude (N)/ Longitude (W)	Path Term	Fly-By Fly-over	True track / Mag track	Distance (NM)	Upper limit / Lower limit	Speed Limit (kts)	Remarks
RNAV1	DW001	531841.3 / 0060846.5	CF	Fly-By	150.2 / 153	-	- / A3000	230	142° DAP / D8.8 DAP
RNAV1	DW004	531406.0 / 0062504.0	TF	Fly-By	244.9 / 247	10.8	-	-	Turn R
RNAV1	NITIL	532800.0 / 0063755.0	TF	Fly-By	331.1 / 334	15.9	-	-	Turn R
RNAV1	INKUR	533551.3 / 0072328.6	TF	Fly-By	286.4 / 289	28.3	-	-	Turn L

LIFFY7M CAT C/D SID RWY16

LIFF7M

Nav. Spec.	WPT Name	Latitude (N)/ Longitude (W)	Path Term	Fly-By Fly-over	True track / Mag track	Distance (NM)	Upper limit / Lower limit	Speed Limit (kts)	Remarks
RNAV1	DW001	531841.3 / 0060846.5	CF	Fly-By	150.2 / 153	-	- / A3000	230	142° DAP / D8.8 DAP
RNAV1	DW011	532118.8 / 0055849.4	TF	Fly-By	066.2 / 069	6.5	-	-	Turn L
RNAV1	LIFFY	532848.3 / 0053000.0	TF	Fly-By	066.3 / 069	18.8	-	-	-

NEVRI7M CAT C/D SID RWY16

NEVR7M

Nav. Spec.	WPT Name	Latitude (N)/ Longitude (W)	Path Term	Fly-By Fly-over	True track / Mag track	Distance (NM)	Upper limit / Lower limit	Speed Limit (kts)	Remarks
RNAV1	DW001	531841.3 / 0060846.5	CF	Fly-By	150.2 / 153	-	- / A3000	-	142° DAP / D8.8 DAP
RNAV1	DW011	532118.8 / 0055849.4	TF	Fly-By	066.2 / 069	6.5	-	230	Turn L
RNAV1	BATED	532942.8 / 0060642.8	TF	Fly-By	330.8 / 333	9.6	-	-	Turn L
RNAV1	ERUDA	534029.0 / 0061655.0	TF	Fly-By	330.7 / 333	12.4	-	-	-
RNAV1	NEVRI	540406.0 / 0061611.4	TF	Fly-By	001.0 / 003	23.7	-	-	Turn R

OLONO3M CAT C/D SID RWY16

OLON3M

Nav. Spec.	WPT Name	Latitude (N)/ Longitude (W)	Path Term	Fly-By Fly-over	True track / Mag track	Distance (NM)	Upper limit / Lower limit	Speed Limit (kts)	Remarks
RNAV1	DW001	531841.3 / 0060846.5	CF	Fly-By	150.2 / 153	-	- / A3000	-	142° DAP / D8.8 DAP
RNAV1	NEPOD	525657.2 / 0061029.8	TF	Fly-By	182.7 / 185	21.8	-	-	Turn R
RNAV1	OLONO	524323.1 / 0064644.4	TF	Fly-By	238.5 / 241	25.8	-	-	Turn R

PELIG7M CAT C/D SID RWY16

PELI7M

Nav. Spec.	WPT Name	Latitude (N)/ Longitude (W)	Path Term	Fly-By Fly-over	True track / Mag track	Distance (NM)	Upper limit / Lower limit	Speed Limit (kts)	Remarks
RNAV1	DW001	531841.3 / 0060846.5	CF	Fly-By	150.2 / 153	-	- / A3000	230	142° DAP / D8.8 DAP
RNAV1	DW004	531406.0 / 0062504.0	TF	Fly-By	244.9 / 247	10.8	-	-	Turn R
RNAV1	PELIG	531158.5 / 0072000.0	TF	Fly-By	266.7 / 269	33.1	-	-	Turn R

PESIT3M CAT C/D SID RWY16

PESI3M

Nav. Spec.	WPT Name	Latitude (N)/ Longitude (W)	Path Term	Fly-By Fly-over	True track / Mag track	Distance (NM)	Upper limit / Lower limit	Speed Limit (kts)	Remarks
RNAV1	DW001	531841.3 / 0060846.5	CF	Fly-By	150.2 / 153	-	- / A3000	-	142° DAP / D8.8 DAP
RNAV1	NEPOD	525657.2 / 0061029.8	TF	Fly-By	182.7 / 185	21.8	-	-	Turn R
RNAV1	PESIT	522356.6 / 0054524.0	TF	Fly-By	155.0 / 157	36.4	-	-	Turn L

ROTEV7M CAT C/D SID RWY16

ROTE7M

Nav. Spec.	WPT Name	Latitude (N)/ Longitude (W)	Path Term	Fly-By Fly-over	True track / Mag track	Distance (NM)	Upper limit / Lower limit	Speed Limit (kts)	Remarks
RNAV1	DW001	531841.3 / 0060846.5	CF	Fly-By	150.2 / 153	-	- / A3000	-	142° DAP / D8.8 DAP
RNAV1	DW011	532118.8 / 0055849.4	TF	Fly-By	066.2 / 069	6.5	-	230	Turn L
RNAV1	BATED	532942.8 / 0060642.8	TF	Fly-By	330.8 / 333	9.6	-	-	Turn L
RNAV1	ERUDA	534029.0 / 0061655.0	TF	Fly-By	330.7 / 333	12.4	-	-	-
RNAV1	ROTEV	540143.7 / 0060358.4	TF	Fly-By	019.7 / 022	22.6	-	-	Turn R

SUROX7M CAT C/D SID RWY16

SURO7M

Nav. Spec.	WPT Name	Latitude (N)/ Longitude (W)	Path Term	Fly-By Fly-over	True track / Mag track	Distance (NM)	Upper limit / Lower limit	Speed Limit (kts)	Remarks
RNAV1	DW001	531841.3 / 0060846.5	CF	Fly-By	150.2 / 153	-	- / A3000	-	142° DAP / D8.8 DAP
RNAV1	DW011	532118.8 / 0055849.4	TF	Fly-By	066.2 / 069	6.5	-	230	Turn L
RNAV1	BATED	532942.8 / 0060642.8	TF	Fly-By	330.8 / 333	9.6	-	-	Turn L
RNAV1	ERUDA	534029.0 / 0061655.0	TF	Fly-By	330.7 / 333	12.4	-	-	-
RNAV1	DODIG	535746.0 / 0062934.0	TF	Fly-By	336.7 / 339	18.9	-	-	Turn R
RNAV1	SUROX	535948.0 / 0065936.5	TF	Fly-By	276.7 / 279	17.8	-	-	Turn L