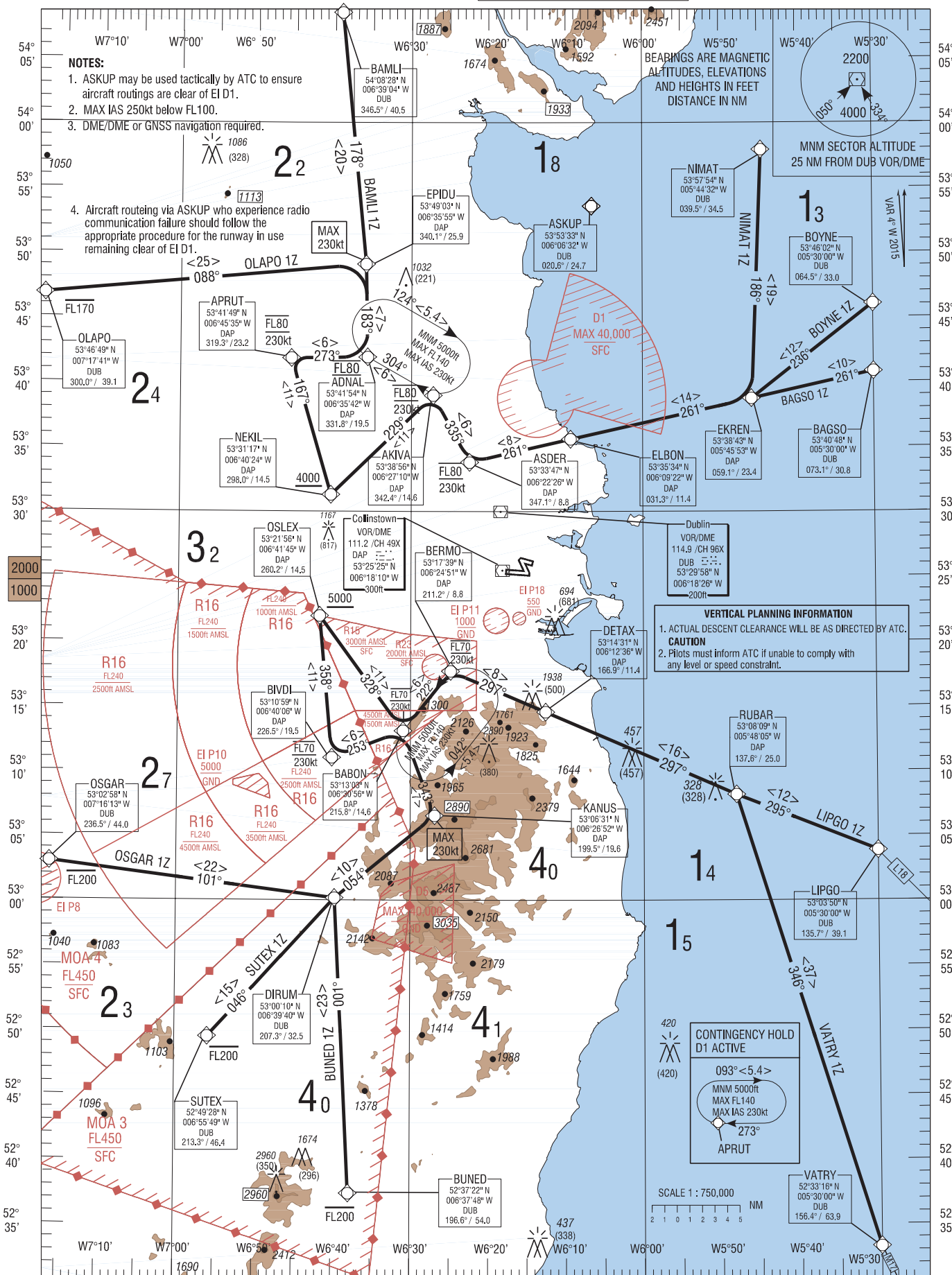


RNAV STANDARD ARRIVAL CHART
INSTRUMENT (STAR) - ICAOTRANS ALT 5000ft
TRANS LEVEL by ATC

ATIS 124.525
APP 121.100
DUBLIN ACC UPPER NORTH 129.175
DUBLIN ACC UPPER SOUTH 124.650
DUBLIN ACC LOWER NORTH 132.575
DUBLIN ACC LOWER SOUTH 126.250

DUBLIN RWY 10

NIMAT 1Z, BOYNE 1Z, BAGSO 1Z, LIPGO 1Z, VATRY 1Z,
BUNED 1Z, SUTEX 1Z, OSGAR 1Z, OLAPO 1Z, BAMLI 1Z.

CHANGE: Coding Table amended.

BAGSO1Z CAT A/B/C/D STAR RWY10
BAGS1Z

Navigation Performance	Path Terminator	WPT Name	Latitude (N) / Longitude (W)	Fly-By or Fly-Over	Distance (NM)	True Track / Magnetic Track	Upper Limit/ Lower Limit	Speed Limit (kts)	Remarks
RNAV1	IF	BAGSO	534048.0 / 0053000.0	Fly-By	-	-	-	-	-
RNAV1	TF	EKREN	533843.0 / 0054553.1	Fly-By	9.7	257.7 / 261	-	-	-
RNAV1	TF	ELBON	533534.1 / 0060921.6	Fly-By	14.3	257.4 / 261	-	-	-
RNAV1	TF	ASDER	533346.7 / 0062226.4	Fly-By	8.0	257.1 / 261	@ FL80	230	-
RNAV1	TF	AKIVA	533856.0 / 0062709.6	Fly-By	5.9	331.5 / 335	@ FL80	230	-
RNAV1	TF	NEKIL	533116.6 / 0064023.6	Fly-By	11.0	225.9 / 229	+ 4000ft	-	-

BAML1Z CAT A/B/C/D STAR RWY10
BAML1Z

Navigation Performance	Path Terminator	WPT Name	Latitude (N), Longitude (W)	Fly-By or Fly-Over	Distance (NM)	True Track / Magnetic Track	Upper Limit/ Lower Limit	Speed Limit (kts)	Remarks
RNAV1	IF	BAML1	540828.5 / 0063904.0	Fly-By	-	-	-	-	-
RNAV1	TF	EPIDU	534903.5 / 0063554.8	Fly-By	19.5	174.5 / 178	-	230	-
RNAV1	TF	ADNAL	534153.9 / 0063541.5	Fly-By	7.2	179.0 / 183	@ FL80	230	-
RNAV1	TF	APRUT	534149.0 / 0064534.9	Fly-By	5.9	269.3 / 273	@ FL80	230	-
RNAV1	TF	NEKIL	533116.6 / 0064023.6	Fly-By	11.0	163.6 / 167	+ 4000ft	-	-

BOYNE1Z CAT A/B/C/D STAR RWY10
BOYN1Z

Navigation Performance	Path Terminator	WPT Name	Latitude (N), Longitude (W)	Fly-By or Fly-Over	Distance (NM)	True Track / Magnetic Track	Upper Limit/ Lower Limit	Speed Limit (kts)	Remarks
RNAV1	IF	BOYNE	534601.6 / 0053000.0	Fly-By	-	-	-	-	-
RNAV1	TF	EKREN	533843.0 / 0054553.1	Fly-By	11.9	232.3 / 236	-	-	-
RNAV1	TF	ELBON	533534.1 / 0060921.6	Fly-By	14.3	257.4 / 261	-	-	-
RNAV1	TF	ASDER	533346.7 / 0062226.4	Fly-By	8.0	257.1 / 261	@ FL80	230	-
RNAV1	TF	AKIVA	533856.0 / 0062709.6	Fly-By	5.9	331.5 / 335	@ FL80	230	-
RNAV1	TF	NEKIL	533116.6 / 0064023.6	Fly-By	11.0	225.9 / 229	+ 4000ft	-	-

BUNED1Z CAT A/B/C/D STAR RWY10
BUNE1Z

Navigation Performance	Path Terminator	WPT Name	Latitude (N), Longitude (W)	Fly-By or Fly-Over	Distance (NM)	True Track / Magnetic Track	Upper Limit/ Lower Limit	Speed Limit (kts)	Remarks
RNAV1	IF	BUNED	523721.9 / 0063748.2	Fly-By	-	-	- FL200	-	-
RNAV1	TF	DIRUM	530009.7 / 0063940.0	Fly-By	22.9	357.2 / 001	-	-	-
RNAV1	TF	KANUS	530630.5 / 0062652.1	Fly-By	10.0	050.5 / 054	-	230	-
RNAV1	TF	BABON	531303.3 / 0063056.5	Fly-By	7.0	339.5 / 343	@ FL70	230	-
RNAV1	TF	BIVDI	531059.5 / 0064005.6	Fly-By	5.9	249.5 / 253	@ FL70	230	-
RNAV1	TF	OSLEX	532155.8 / 0064144.5	Fly-By	11.0	354.8 / 358	+ 5000	-	-

LIPGO1Z CAT A/B/C/D STAR RWY10
LIPG1Z

Navigation Performance	Path Terminator	WPT Name	Latitude (N), Longitude (W)	Fly-By or Fly-Over	Distance (NM)	True Track / Magnetic Track	Upper Limit/ Lower Limit	Speed Limit (kts)	Remarks
RNAV1	IF	LIPGO	530350.1 / 0053000.0	Fly-By	-	-	-	-	-
RNAV1	TF	RUBAR	530808.9 / 0054805.4	Fly-By	11.7	291.7 / 295	-	-	-
RNAV1	TF	DETAX	531430.7 / 0061235.6	Fly-By	16.1	293.5 / 297	-	-	-
RNAV1	TF	BERMO	531738.9 / 0062450.8	Fly-By	8.0	293.2 / 297	@ FL70	230	-
RNAV1	TF	BABON	531303.3 / 0063056.5	Fly-By	5.9	218.6 / 222	@ FL70	230	-
RNAV1	TF	OSLEX	532155.8 / 0064144.5	Fly-By	11.0	324.0 / 328	+ 5000	-	-

NIMAT1Z CAT A/B/C/D STAR RWY10
NIMA1Z

Navigation Performance	Path Terminator	WPT Name	Latitude (N), Longitude (W)	Fly-By or Fly-Over	Distance (NM)	True Track / Magnetic Track	Upper Limit/ Lower Limit	Speed Limit (kts)	Remarks
RNAV1	IF	NIMAT	535754.1 / 0054431.7	Fly-By	-	-	-	-	-
RNAV1	TF	EKREN	533843.0 / 0054553.1	Fly-By	19.2	182.4 / 186	-	-	-
RNAV1	TF	ELBON	533534.1 / 0060921.6	Fly-By	14.3	257.4 / 261	-	-	-
RNAV1	TF	ASDER	533346.7 / 0062226.4	Fly-By	8.0	257.1 / 261	@ FL80	230	-
RNAV1	TF	AKIVA	533856.0 / 0062709.6	Fly-By	5.9	331.5 / 335	@ FL80	230	-
RNAV1	TF	NEKIL	533116.6 / 0064023.6	Fly-By	11.0	225.9 / 229	+ 4000ft	-	-

OLAPO1Z CAT A/B/C/D STAR RWY10
OLAP1Z

Navigation Performance	Path Terminator	WPT Name	Latitude (N), Longitude (W)	Fly-By or Fly-Over	Distance (NM)	True / (Mag) Track	Upper Limit/ Lower Limit	Speed Limit (kts)	Remarks
RNAV1	IF	OLAPO	534649.0 / 0071740.6	Fly-By	-	-	- FL170	-	-
RNAV1	TF	EPIDU	534903.5 / 0063554.8	Fly-By	24.9	084.5 / 088	-	230	-
RNAV1	TF	ADNAL	534153.9 / 0063541.5	Fly-By	7.2	179.0 / 183	@ FL80	230	-
RNAV1	TF	APRUT	534149.0 / 0064534.9	Fly-By	5.9	269.3 / 273	@ FL80	230	-
RNAV1	TF	NEKIL	533116.6 / 0064023.6	Fly-By	11.0	163.6 / 167	+ 4000ft	-	-

OSGAR1Z CAT A/B/C/D STAR RWY10
OSGA1Z

Navigation Performance	Path Terminator	WPT Name	Latitude (N), Longitude (W)	Fly-By or Fly-Over	Distance (NM)	True Track / Magnetic Track	Upper Limit/ Lower Limit	Speed Limit (kts)	Remarks
RNAV1	IF	OSGAR	530257.9 / 0071612.8	Fly-By	-	-	- FL200	-	-
RNAV1	TF	DIRUM	530009.7 / 0063940.0	Fly-By	22.2	097.0 / 101	-	-	-
RNAV1	TF	KANUS	530630.5 / 0062652.1	Fly-By	10.0	050.5 / 054	-	230	-
RNAV1	TF	BABON	531303.3 / 0063056.5	Fly-By	7.0	339.5 / 343	@ FL70	230	-
RNAV1	TF	BIVDI	531059.5 / 0064005.6	Fly-By	5.9	249.5 / 253	@ FL70	230	-
RNAV1	TF	OSLEX	532155.8 / 0064144.5	Fly-By	11.0	354.8 / 358	+ 5000	-	-

SUTEXIZ CAT A/B/C/D STAR RWY10
SUTE1Z

Navigation Performance	Path Terminator	WPT Name	Latitude (N), Longitude (W)	Fly-By or Fly-Over	Distance (NM)	True Track / Magnetic Track	Upper Limit/Lower Limit	Speed Limit (kts)	Remarks
RNAV1	IF	SUTEX	524927.7 / 0065549.3	Fly-By	-	-	-200	-	-
RNAV1	TF	DIRUM	530009.7 / 0063940.0	Fly-By	14.5	042.3 / 046	-	-	-
RNAV1	TF	KANUS	530630.5 / 0062652.1	Fly-By	10.0	050.5 / 054	-	230	-
RNAV1	TF	BABON	531303.3 / 0063056.5	Fly-By	7.0	339.5 / 343	@ FL70	230	-
RNAV1	TF	BIVDI	531059.5 / 0064005.6	Fly-By	5.9	249.5 / 253	@ FL70	230	-
RNAV1	TF	OSLEX	532155.8 / 0064144.5	Fly-By	11.0	354.8 / 358	+ 5000	-	-

VATRY1Z CAT A/B/C/D STAR RWY10
VATR1Z

Navigation Performance	Path Terminator	WPT Name	Latitude (N), Longitude (W)	Fly-By or Fly-Over	Distance (NM)	True Track / Magnetic Track	Upper Limit/Lower Limit	Speed Limit (kts)	Remarks
RNAV1	IF	VATRY	523316.0 / 0053000.0	Fly-By	-	-	-	-	-
RNAV1	TF	RUBAR	530808.9 / 0054805.4	Fly-By	36.6	342.7 / 346	-	-	-
RNAV1	TF	DETAX	531430.7 / 0061235.6	Fly-By	16.1	293.5 / 297	-	-	-
RNAV1	TF	BERMO	531738.9 / 0062450.8	Fly-By	8.0	293.2 / 297	@ FL70	230	-
RNAV1	TF	BABON	531303.3 / 0063056.5	Fly-By	5.9	218.6 / 222	@ FL70	230	-
RNAV1	TF	OSLEX	532155.8 / 0064144.5	Fly-By	11.0	324.0 / 328	+ 5000	-	-

Hold Identification – EIDW AD 2.24-19.4

Holding Fix	Latitude (N) / Longitude (W)	Inbound True Track (degrees)	Inbound Mag Track (degrees)	Maximum Indicated Airspeed (kts)	Maximum /Minimum Holding Altitude/ Level (FL/ft)	Distance outbound Limit (NM)	Direction of Turn
ADNAL	534153.9 / 0063541.5	300.4	304	230	FL140/5000	5.4	R
BABON	531303.3 / 0063056.5	218.6	222	230	FL140/5000	5.4	L
APRUT	534149.0 / 0064534.9	269.3	273	230	FL140/5000	5.4	R

THIS PAGE INTENTIONALLY LEFT BLANK