

CHANGES: TAXIWAY DESIGNATIONS REMOVED : B3, B4, B5, B6, B7, E2, E3, E4, E5, E6, E7 H2, M2, P2, NEW TAXIWAY DESIGNATIONS : S, S1, S2, S3, S4, S5, S6, S7, W1, W2, W3.

**AERODROME CHART - ICAO**

53 25 17 N  
006 16 12 W  
ELEV 242 FT

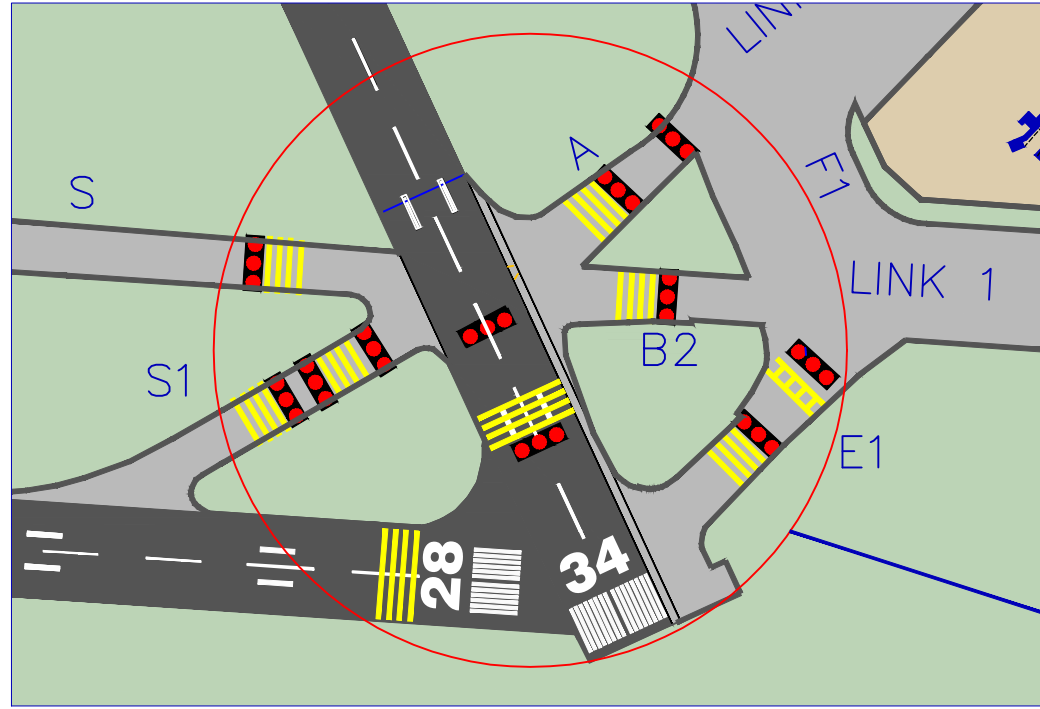
TWR 118.600  
GND 121.800  
ATIS 124.530

RWY	DIRECTION	THR		BEARING STRENGTH
10	98°	53 25 20.75 N	006 17 24.27 W	PCN 70/R/B/W/T
28	278°	53 25 12.94 N	006 15 02.08 W	
16	159°	53 26 13.16 N	006 15 43.12 W	PCN 75/R/D/W/T
34	339°	53 25 11.66 N	006 14 58.54 W	

CONSULT NOTAM FOR LATEST INFORMATION **DUBLIN AIRPORT/ IRELAND**

LEGEND

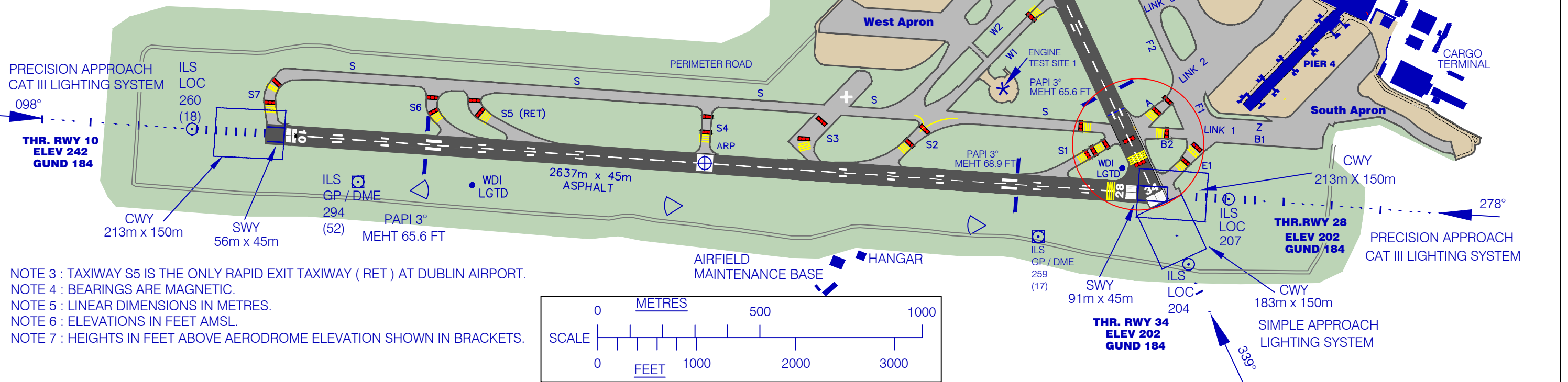
RVR	
DISUSED PAVEMENT	
STOPBAR	
RUNWAY HOLDING POSITION MARKINGS	
HOT SPOT	
CLEARWAY	
STOPWAY	
ENGINE TEST SITE	



**HOTSPOT HS1**

- Dual RWY Threshold.
- Ensure Correct line up.
- Multiple runway entry points and converging taxiways.
- Potential for TWY confusion, disorientation, wingtip collision and RWY incursion.
- Pay attention to signage and ATC instruction.
- Pilots must ensure wingtip clearance.

NOTE 1: RWY 10/28 IS PROVIDED WITH 7.5M WIDE ASPHALT SHOULDERS.  
NOTE 2: ALL TAXIWAYS 23M WIDE EXCEPT TWY R: 15M, LINK 1: 33M, LINK 2: 65M, LINK 3: 42M, LINK 4: 73M, B1 AND B2: 24M, S5: 30M, F1: 25M, M1 AND W2: 25M



NOTE 3: TAXIWAY S5 IS THE ONLY RAPID EXIT TAXIWAY (RET) AT DUBLIN AIRPORT.  
NOTE 4: BEARINGS ARE MAGNETIC.  
NOTE 5: LINEAR DIMENSIONS IN METRES.  
NOTE 6: ELEVATIONS IN FEET AMSL.  
NOTE 7: HEIGHTS IN FEET ABOVE AERODROME ELEVATION SHOWN IN BRACKETS.

