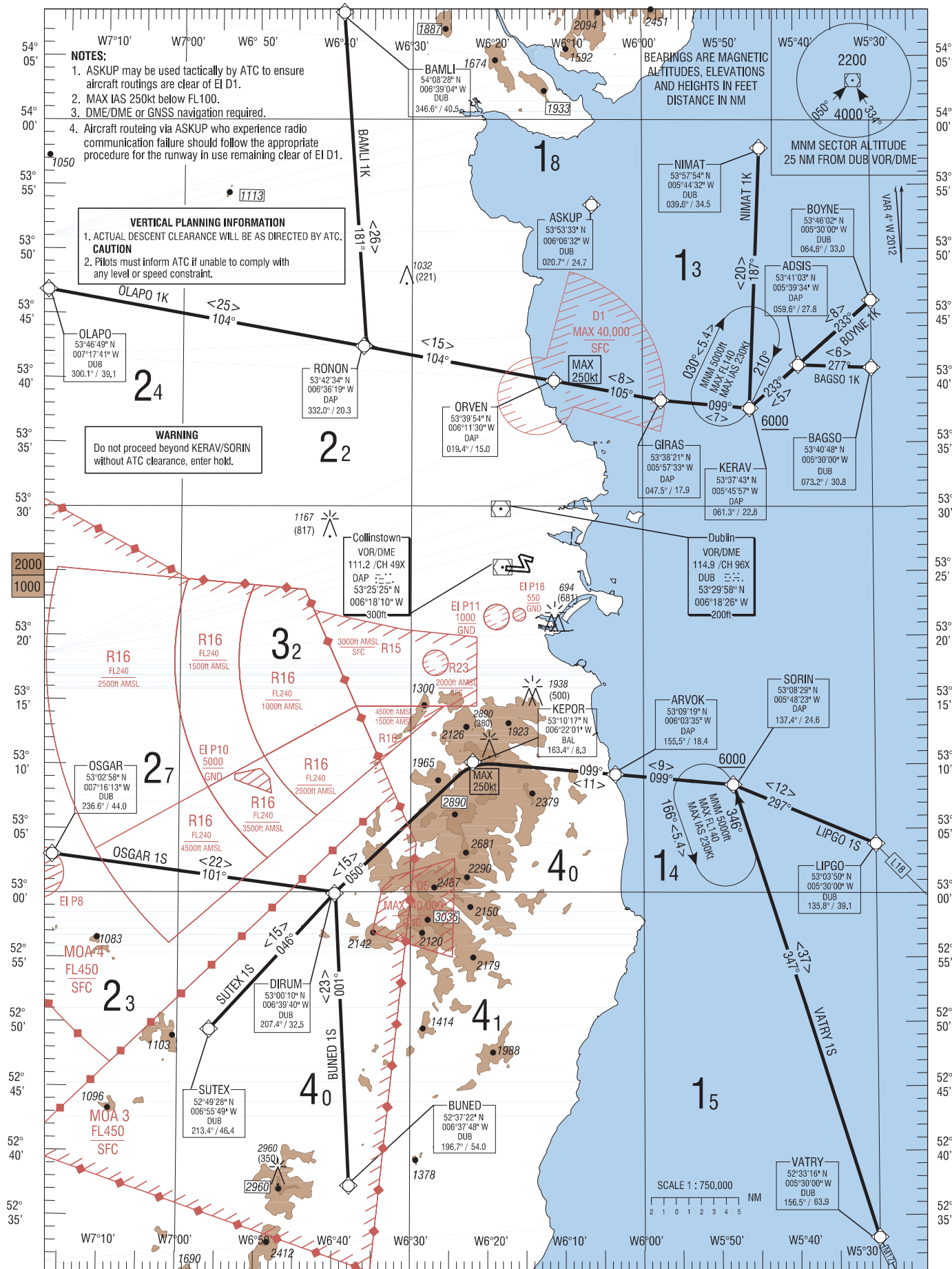


RNAV STANDARD ARRIVAL CHART
INSTRUMENT (STAR) - ICAOTRANS ALT 5000ft
TRANS LEVEL by ATC

ATIS 124.525
APP 121.100
DUBLIN ACC UPPER NORTH 129.175
DUBLIN ACC UPPER SOUTH 124.650
DUBLIN ACC LOWER NORTH 132.575
DUBLIN ACC LOWER SOUTH 126.250

DUBLIN RWY 34

NIMAT 1K, BOYNE 1K, BAGSO 1K, LIPGO 1S, VATRY 1S,
BUNED 1S, SUTEX 1S, OSGAR 1S, OLAP0 1K, BAMLI 1K.



BAGSOIK STAR RWY34

Navigation Performance	Path Terminator	WPT Name	Latitude (N), Longitude (W)	Fly-By or Fly-Over	Distance (NM)	True Track / Magnetic Track	Upper Limit/ Lower Limit	Speed Limit (kts)	Remarks
RNAV1	IF	BAGSO	534048.0 / 0053000.0	Fly-By	-	-	-	-	-
RNAV1	TF	ADSI	534103.1 / 0053934.0	Fly-By	5.7	272.6 / 277	-	-	-
RNAV1	TF	KERAV	533742.7 / 0054557.3	Fly-By	5.1	228.7 / 233	A6000+	230	-

BAMLI1K STAR RWY34

Navigation Performance	Path Terminator	WPT Name	Latitude (N), Longitude (W)	Fly-By or Fly-Over	Distance (NM)	True Track / Magnetic Track	Upper Limit/ Lower Limit	Speed Limit (kts)	Remarks
RNAV1	IF	BAMLI	540828.5 / 0063904.0	Fly-By	-	-	-	-	-
RNAV1	TF	RONON	534233.9 / 0063619.2	Fly-By	26.0	176.4 / 181	-	-	-
RNAV1	TF	ORVEN	533953.5 / 0061129.8	Fly-By	15.0	100.1 / 104	-	250	-
RNAV1	TF	GIRAS	533821.0 / 0055733.2	Fly-By	8.4	100.4 / 105	-	-	-
RNAV1	TF	KERAV	533742.7 / 0054557.3	Fly-By	6.9	095.2 / 099	A6000+	230	-

BOYNEIK STAR RWY34

Navigation Performance	Path Terminator	WPT Name	Latitude (N), Longitude (W)	Fly-By or Fly-Over	Distance (NM)	True Track / Magnetic Track	Upper Limit/ Lower Limit	Speed Limit (kts)	Remarks
RNAV1	IF	BOYNE	534601.6 / 0053000.0	Fly-By	-	-	-	-	-
RNAV1	TF	ADSI	534103.1 / 0053934.0	Fly-By	7.6	228.8 / 233	-	-	-
RNAV1	TF	KERAV	533742.7 / 0054557.3	Fly-By	5.1	228.7 / 233	A6000+	230	-

BUNEDIS STAR RWY34

Navigation Performance	Path Terminator	WPT Name	Latitude (N), Longitude (W)	Fly-By or Fly-Over	Distance (NM)	True Track / Magnetic Track	Upper Limit/ Lower Limit	Speed Limit (kts)	Remarks
RNAV1	IF	BUNED	523721.9 / 0063748.2	Fly-By	-	-	-	-	-
RNAV1	TF	DIRUM	530009.7 / 0063940.0	Fly-By	22.9	357.2 / 001	-	-	-
RNAV1	TF	KEPOR	531016.5 / 0062200.7	Fly-By	14.7	046.3 / 050	-	250	-
RNAV1	TF	ARVOK	530919.0 / 0060335.1	Fly-By	11.1	094.8 / 099	-	-	-
RNAV1	TF	SORIN	530829.3 / 0054822.5	Fly-By	9.2	095.1 / 099	A6000+	230	-

LIPGOIS STAR RWY34

Navigation Performance	Path Terminator	WPT Name	Latitude (N), Longitude (W)	Fly-By or Fly-Over	Distance (NM)	True Track / Magnetic Track	Upper Limit/ Lower Limit	Speed Limit (kts)	Remarks
RNAV1	IF	LIPGO	530350.1 / 0053000.0	Fly-By	-	-	-	-	-
RNAV1	TF	SORIN	530829.3 / 0054822.5	Fly-By	12.0	292.9 / 297	A6000+	230	-

NIMATIK STAR RWY34

Navigation Performance	Path Terminator	WPT Name	Latitude (N), Longitude (W)	Fly-By or Fly-Over	Distance (NM)	True Track / Magnetic Track	Upper Limit/ Lower Limit	Speed Limit (kts)	Remarks
RNAV1	IF	NIMAT	535754.1 / 0054431.7	Fly-By	-	-	-	-	-
RNAV1	TF	KERAV	533742.7 / 0054557.3	Fly-By	20.2	182.4 / 187	A6000+	230	-

OLAPO1K STAR RWY34

Navigation Performance	Path Terminator	WPT Name	Latitude (N), Longitude (W)	Fly-By or Fly-Over	Distance (NM)	True Track / Magnetic Track	Upper Limit/ Lower Limit	Speed Limit (kts)	Remarks
RNAV1	IF	OLAPO	534649.0 / 0071740.6	Fly-By	-	-	-	-	-
RNAV1	TF	RONON	534233.9 / 0063619.2	Fly-By	24.9	099.6 / 104	-	-	-
RNAV1	TF	ORVEN	533953.5 / 0061129.8	Fly-By	15.0	100.1 / 104	-	250	-
RNAV1	TF	GIRAS	533821.0 / 0055733.2	Fly-By	8.4	100.4 / 105	-	-	-
RNAV1	TF	KERAV	533742.7 / 0054557.3	Fly-By	6.9	095.2 / 099	A6000+	230	-

OSGARIS STAR RWY34

Navigation Performance	Path Terminator	WPT Name	Latitude (N), Longitude (W)	Fly-By or Fly-Over	Distance (NM)	True Track / Magnetic Track	Upper Limit/ Lower Limit	Speed Limit (kts)	Remarks
RNAV1	IF	OSGAR	530257.9 / 0071612.8	Fly-By	-	-	-	-	-
RNAV1	TF	DIRUM	530009.7 / 0063940.0	Fly-By	22.2	097.0 / 101	-	-	-
RNAV1	TF	KEPOR	531016.5 / 0062200.7	Fly-By	14.7	046.3 / 050	-	250	-
RNAV1	TF	ARVOK	530919.0 / 0060335.1	Fly-By	11.1	094.8 / 099	-	-	-
RNAV1	TF	SORIN	530829.3 / 0054822.5	Fly-By	9.2	095.1 / 099	A6000+	230	-

SUTEXIS STAR RWY34

Navigation Performance	Path Terminator	WPT Name	Latitude (N), Longitude (W)	Fly-By or Fly-Over	Distance (NM)	True Track / Magnetic Track	Upper Limit/ Lower Limit	Speed Limit (kts)	Remarks
RNAV1	IF	SUTEX	524927.7 / 0065549.3	Fly-By	-	-	-	-	-
RNAV1	TF	DIRUM	530009.7 / 0063940.0	Fly-By	14.5	042.3 / 046	-	-	-
RNAV1	TF	KEPOR	531016.5 / 0062200.7	Fly-By	14.7	046.3 / 050	-	250	-
RNAV1	TF	ARVOK	530919.0 / 0060335.1	Fly-By	11.1	094.8 / 099	-	-	-
RNAV1	TF	SORIN	530829.3 / 0054822.5	Fly-By	9.2	095.1 / 099	A6000+	230	-

VATRYIS STAR RWY34

Navigation Performance	Path Terminator	WPT Name	Latitude (N), Longitude (W)	Fly-By or Fly-Over	Distance (NM)	True Track / Magnetic Track	Upper Limit/ Lower Limit	Speed Limit (kts)	Remarks
RNAV1	IF	VATRY	523316.0 / 0053000.0	Fly-By	-	-	-	-	-
RNAV1	TF	SORIN	530829.3 / 0054822.5	Fly-By	37.0	342.6 / 347	A6000+	230	-

HOLDING IDENTIFICATION EIDW AD2.24-21

HOLDING FIX	LATITUDE (N), LONGITUDE (W)	INBOUND TRUE TRACK (degrees)	INBOUND MAGNETIC TRACK (degrees)	MAXIMUM INDICATED AIRSPEED (kts)	MAXIMUM /MINIMUM HOLDING ALTITUDE / LEVEL (FL/ft)	TIME / DISTANCE OUTBOUND	DIRECTION OF TURN
KERAV	533742.7 / 0054557.3	205.5	210	230	F140 / A5000	5.4NM	R
SORIN	530829.3 / 0054822.5	342.4	346	230	F140 / A5000	5.4NM	L