

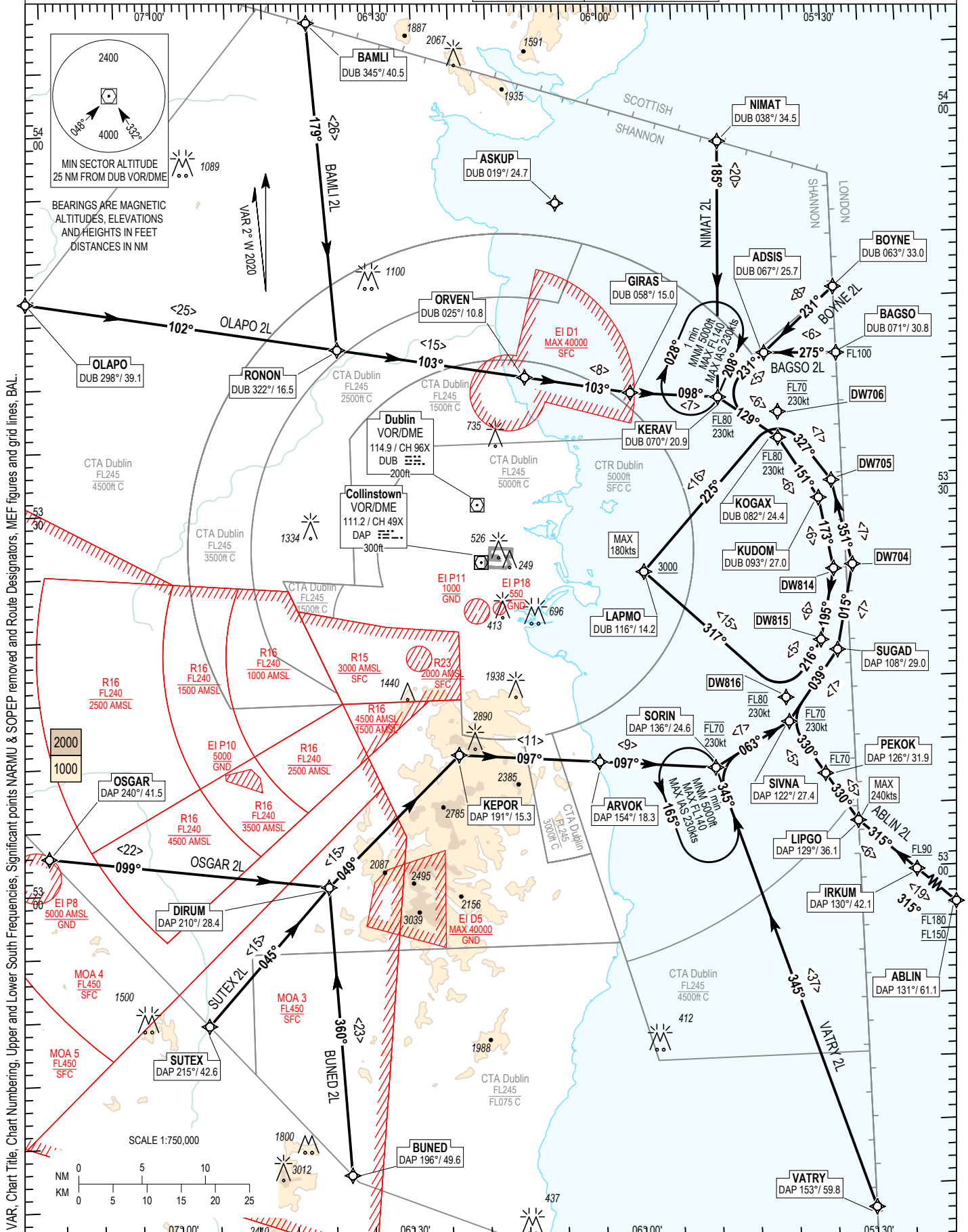
RNAV STANDARD ARRIVAL CHART INSTRUMENT (STAR) - ICAO

TRANS ALT 5000ft TRANS LEVEL by ATC

ATIS APP	124.530	ACC Upper North	129.180
	121.100	ACC Upper South	135.655
		ACC Lower North	132.580
		ACC Lower South	120.755

DUBLIN RWY 28L

NIMAT 2L, BOYNE 2L, BAGSO 2L, ABLIN 2L, VATRY 2L, BUNED 2L, SUTEX 2L, OSGAR 2L, OLAP 2L, BAMLI 2L



CHANGE: MAG VAR, Chart Numbering, Upper and Lower South Frequencies, Significant points NARMU & SOPEP removed and Route Designators, MEF figures and grid lines, BAL.

NOTES: 1. ASKUP may be used tactically by ATC to ensure aircraft routings are clear of EI D1. 2. MAX IAS 250kts below FL100. 3. Aircraft flying the ABLIN STAR losing R/T contact should squawk A7600 and should continue to fly the STAR (including the sequence leg from SIVNA onwards) and complete the approach. 4. Aircraft on ABLIN STAR will be directed to SORIN if holding required. 5. DME/DME or GNSS navigation required. 6. Aircraft routing via ASKUP that experience radio communication failure should follow the appropriate procedure for the runway 28L remaining clear of EI D1. **VERTICAL PLANNING INFORMATION:** 1. ACTUAL DESCENT CLEARANCE WILL BE AS DIRECTED BY ATC. **CAUTION:** 2. Pilots must inform ATC if unable to comply with any level or speed constraint.

08 OCT 2020

ABLIN2L STAR RWY 28L
ABLI2L

Nav. Spec.	WPT Name	Latitude (N)/ Longitude (W)	Path Term	Fly-By Fly-over	True track / Mag track	Distance (NM)	Upper limit / Lower limit	Speed Limit (kts)	Remarks
RNAV1	ABLIN	524658.0 / 0045933.0	IF	-	-	-	FL180 / FL150	-	-
RNAV1	IRKUM	525948.0 / 0052239.0	TF	Fly-by	312.7 / 315	19.0	- / FL090	-	-
RNAV1	LIPGO	530350.1 / 0053000.0	TF	Fly-by	312.4 / 315	6.0	-	240	-
RNAV1	PEKOK	530739.3 / 0053400.8	TF	Fly-by	327.7 / 330	4.5	FL070 / FL070	-	Turn R
RNAV1	SIVNA	531152.3 / 0053827.7	TF	Fly-by	327.7 / 330	5.0	FL070 / FL070	230	-
RNAV1	SUGAD	531722.5 / 0053139.8	TF	Fly-by	036.5 / 039	6.9	FL070 / FL070	230	Turn R
RNAV1	DW704	532403.7 / 0052910.1	TF	Fly-by	012.6 / 015	6.9	FL070 / FL070	230	Turn L
RNAV1	DW705	533046.6 / 0053126.4	TF	Fly-by	348.6 / 351	6.9	FL070 / FL070	230	Turn L
RNAV1	DW706	533621.3 / 0053806.9	TF	Fly-by	324.6 / 327	6.9	FL070 / FL070	230	Turn L
RNAV1	LAPMO	532411.0 / 0055644.1	TF	Fly-by	222.5 / 225	16.5	- / A3000	180	Turn L

BAGSO2L STAR RWY 28L
BAGS2L

Nav. Spec.	WPT Name	Latitude (N)/ Longitude (W)	Path Term	Fly-By Fly-over	True track / Mag track	Distance (NM)	Upper limit / Lower limit	Speed Limit (kts)	Remarks
RNAV1	BAGSO	534048.0 / 0053000.0	IF	-	-	-	FL100 / -	-	-
RNAV1	ADSI	534103.1 / 0053934.0	TF	Fly-by	272.6 / 275	5.7	-	-	-
RNAV1	KERAV	533742.7 / 0054557.3	TF	Fly-by	228.7 / 231	5.1	FL080 / FL080	230	Turn L
RNAV1	KOGAX	533418.6 / 0053814.1	TF	Fly-by	126.5 / 129	5.7	FL080 / FL080	230	Turn L
RNAV1	KUDOM	532925.8 / 0053314.3	TF	Fly-by	148.6 / 151	5.7	FL080 / FL080	230	Turn R
RNAV1	DW814	532347.5 / 0053141.1	TF	Fly-by	170.6 / 173	5.7	FL080 / FL080	230	Turn R
RNAV1	DW815	531812.9 / 0053346.6	TF	Fly-by	192.7 / 195	5.7	FL080 / FL080	230	Turn R
RNAV1	DW816	531346.9 / 0053844.4	TF	Fly-by	213.9 / 216	5.3	FL080 / FL080	230	Turn R
RNAV1	LAPMO	532411.0 / 0055644.1	TF	Fly-by	314.1 / 317	15.0	- / A3000	180	Turn R

BAMLI2L STAR RWY 28L
BAML2L

Nav. Spec.	WPT Name	Latitude (N)/ Longitude (W)	Path Term	Fly-By Fly-over	True track / Mag track	Distance (NM)	Upper limit / Lower limit	Speed Limit (kts)	Remarks
RNAV1	BAMLI	540828.5 / 0063904.0	IF	-	-	-	-	-	-
RNAV1	RONON	534233.9 / 0063619.2	TF	Fly-by	176.4 / 179	26.0	-	-	-
RNAV1	ORVEN	533953.5 / 0061129.8	TF	Fly-by	100.1 / 103	15.0	-	-	Turn L
RNAV1	GIRAS	533821.0 / 0055733.2	TF	Fly-by	100.4 / 103	8.4	-	-	-
RNAV1	KERAV	533742.7 / 0054557.3	TF	Fly-by	095.2 / 098	6.9	FL080 / FL080	230	Turn L
RNAV1	KOGAX	533418.6 / 0053814.1	TF	Fly-by	126.5 / 129	5.7	FL080 / FL080	230	Turn R
RNAV1	KUDOM	532925.8 / 0053314.3	TF	Fly-by	148.6 / 151	5.7	FL080 / FL080	230	Turn R
RNAV1	DW814	532347.5 / 0053141.1	TF	Fly-by	170.6 / 173	5.7	FL080 / FL080	230	Turn R
RNAV1	DW815	531812.9 / 0053346.6	TF	Fly-by	192.7 / 195	5.7	FL080 / FL080	230	Turn R
RNAV1	DW816	531346.9 / 0053844.4	TF	Fly-by	213.9 / 216	5.3	FL080 / FL080	230	Turn R
RNAV1	LAPMO	532411.0 / 0055644.1	TF	Fly-by	314.1 / 317	15.0	- / A3000	180	Turn R

BOYNE2L STAR RWY 28L
BOYN2L

Nav. Spec.	WPT Name	Latitude (N)/ Longitude (W)	Path Term	Fly-By Fly-over	True track / Mag track	Distance (NM)	Upper limit / Lower limit	Speed Limit (kts)	Remarks
RNAV1	BOYNE	534601.6 / 0053000.0	IF	-	-	-	-	-	-
RNAV1	ADSI	534103.1 / 0053934.0	TF	Fly-by	228.8 / 231	7.6	-	-	-
RNAV1	KERAV	533742.7 / 0054557.3	TF	Fly-by	228.7 / 231	5.1	FL080 / FL080	230	-
RNAV1	KOGAX	533418.6 / 0053814.1	TF	Fly-by	126.5 / 129	5.7	FL080 / FL080	230	Turn L
RNAV1	KUDOM	532925.8 / 0053314.3	TF	Fly-by	148.6 / 151	5.7	FL080 / FL080	230	Turn R
RNAV1	DW814	532347.5 / 0053141.1	TF	Fly-by	170.6 / 173	5.7	FL080 / FL080	230	Turn R
RNAV1	DW815	531812.9 / 0053346.6	TF	Fly-by	192.7 / 195	5.7	FL080 / FL080	230	Turn R
RNAV1	DW816	531346.9 / 0053844.4	TF	Fly-by	213.9 / 216	5.3	FL080 / FL080	230	Turn R
RNAV1	LAPMO	532411.0 / 0055644.1	TF	Fly-by	314.1 / 317	15.0	- / A3000	180	Turn R

BUNED2L STAR RWY 28L
BUNE2L

Nav. Spec.	WPT Name	Latitude (N)/ Longitude (W)	Path Term	Fly-By Fly-over	True track / Mag track	Distance (NM)	Upper limit / Lower limit	Speed Limit (kts)	Remarks
RNAV1	BUNED	523721.9 / 0063748.2	IF	-	-	-	-	-	-
RNAV1	DIRUM	530009.7 / 0063940.0	TF	Fly-by	357.2 / 360	22.9	-	-	-
RNAV1	KEPOR	531016.5 / 0062200.7	TF	Fly-by	046.3 / 049	14.7	-	-	Turn R
RNAV1	ARVOK	530919.0 / 0060335.1	TF	Fly-by	094.8 / 097	11.1	-	-	Turn R
RNAV1	SORIN	530829.3 / 0054822.5	TF	Fly-by	095.1 / 097	9.2	FL070 / FL070	230	-
RNAV1	SIVNA	531152.3 / 0053827.7	TF	Fly-by	060.3 / 063	6.9	FL070 / FL070	230	Turn L
RNAV1	SUGAD	531722.5 / 0053139.8	TF	Fly-by	036.5 / 039	6.9	FL070 / FL070	230	Turn L
RNAV1	DW704	532403.7 / 0052910.1	TF	Fly-by	012.6 / 015	6.9	FL070 / FL070	230	Turn L
RNAV1	DW705	533046.6 / 0053126.4	TF	Fly-by	348.6 / 351	6.9	FL070 / FL070	230	Turn L
RNAV1	DW706	533621.3 / 0053806.9	TF	Fly-by	324.6 / 327	6.9	FL070 / FL070	230	Turn L
RNAV1	LAPMO	532411.0 / 0055644.1	TF	Fly-by	222.5 / 225	16.5	- / A3000	180	Turn L

NIMAT2L STAR RWY 28L
NIMAZL

Nav. Spec.	WPT Name	Latitude (N)/ Longitude (W)	Path Term	Fly-By Fly-over	True track / Mag track	Distance (NM)	Upper limit / Lower limit	Speed Limit (kts)	Remarks
RNAV1	NIMAT	535754.1 / 0054431.7	IF	-	-	-	-	-	-
RNAV1	KERAV	533742.7 / 0054557.3	TF	Fly-by	182.4 / 185	20.2	FL080 / FL080	230	-
RNAV1	KOGAX	533418.6 / 0053814.1	TF	Fly-by	126.5 / 129	5.7	FL080 / FL080	230	Turn L
RNAV1	KUDOM	532925.8 / 0053314.3	TF	Fly-by	148.6 / 151	5.7	FL080 / FL080	230	Turn R
RNAV1	DW814	532347.5 / 0053141.1	TF	Fly-by	170.6 / 173	5.7	FL080 / FL080	230	Turn R
RNAV1	DW815	531812.9 / 0053346.6	TF	Fly-by	192.7 / 195	5.7	FL080 / FL080	230	Turn R
RNAV1	DW816	531346.9 / 0053844.4	TF	Fly-by	213.9 / 216	5.3	FL080 / FL080	230	Turn R
RNAV1	LAPMO	532411.0 / 0055644.1	TF	Fly-by	314.1 / 317	15.0	- / A3000	180	Turn R

08 OCT 2020

OLAPO2L STAR RWY 28L

OLAP2L

Nav. Spec.	WPT Name	Latitude (N)/ Longitude (W)	Path Term	Fly-By Fly-over	True track / Mag track	Distance (NM)	Upper limit / Lower limit	Speed Limit (kts)	Remarks
RNAV1	OLAPO	534649.0 / 0071740.6	IF	-	-	-	-	-	-
RNAV1	RONON	534233.9 / 0063619.2	TF	Fly-by	099.6 / 102	24.9	-	-	-
RNAV1	ORVEN	533953.5 / 0061129.8	TF	Fly-by	100.1 / 103	15.0	-	-	-
RNAV1	GIRAS	533821.0 / 0055733.2	TF	Fly-by	100.4 / 103	8.4	-	-	-
RNAV1	KERAV	533742.7 / 0054557.3	TF	Fly-by	095.2 / 098	6.9	FL080 / FL080	230	Turn L
RNAV1	KOGAX	533418.6 / 0053814.1	TF	Fly-by	126.5 / 129	5.7	FL080 / FL080	230	Turn R
RNAV1	KUDOM	532925.8 / 0053314.3	TF	Fly-by	148.6 / 151	5.7	FL080 / FL080	230	Turn R
RNAV1	DW814	532347.5 / 0053141.1	TF	Fly-by	170.6 / 173	5.7	FL080 / FL080	230	Turn R
RNAV1	DW815	531812.9 / 0053346.6	TF	Fly-by	192.7 / 195	5.7	FL080 / FL080	230	Turn R
RNAV1	DW816	531346.9 / 0053844.4	TF	Fly-by	213.9 / 216	5.3	FL080 / FL080	230	Turn R
RNAV1	LAPMO	532411.0 / 0055644.1	TF	Fly-by	314.1 / 317	15.0	- / A3000	180	Turn R

OSGAR2L STAR RWY 28L

OSGA2L

Nav. Spec.	WPT Name	Latitude (N)/ Longitude (W)	Path Term	Fly-By Fly-over	True track / Mag track	Distance (NM)	Upper limit / Lower limit	Speed Limit (kts)	Remarks
RNAV1	OSGAR	530257.9 / 0071612.8	IF	-	-	-	-	-	-
RNAV1	DIRUM	530009.7 / 0063940.0	TF	Fly-by	097.0 / 099	22.2	-	-	-
RNAV1	KEPOR	531016.5 / 0062200.7	TF	Fly-by	046.3 / 049	14.7	-	-	Turn L
RNAV1	ARVOK	530919.0 / 0060335.1	TF	Fly-by	094.8 / 097	11.1	-	-	Turn R
RNAV1	SORIN	530829.3 / 0054822.5	TF	Fly-by	095.1 / 097	9.2	FL070 / FL070	230	-
RNAV1	SIVNA	531152.3 / 0053827.7	TF	Fly-by	060.3 / 063	6.9	FL070 / FL070	230	Turn L
RNAV1	SUGAD	531722.5 / 0053139.8	TF	Fly-by	036.5 / 039	6.9	FL070 / FL070	230	Turn L
RNAV1	DW704	532403.7 / 0052910.1	TF	Fly-by	012.6 / 015	6.9	FL070 / FL070	230	Turn L
RNAV1	DW705	533046.6 / 0053126.4	TF	Fly-by	348.6 / 351	6.9	FL070 / FL070	230	Turn L
RNAV1	DW706	533621.3 / 0053806.9	TF	Fly-by	324.6 / 327	6.9	FL070 / FL070	230	Turn L
RNAV1	LAPMO	532411.0 / 0055644.1	TF	Fly-by	222.5 / 225	16.5	- / A3000	180	Turn L

SUTEX2L STAR RWY 28L

SUTE2L

Nav. Spec.	WPT Name	Latitude (N)/ Longitude (W)	Path Term	Fly-By Fly-over	True track / Mag track	Distance (NM)	Upper limit / Lower limit	Speed Limit (kts)	Remarks
RNAV1	SUTEX	524927.7 / 0065549.3	IF	-	-	-	-	-	-
RNAV1	DIRUM	530009.7 / 0063940.0	TF	Fly-by	042.3 / 045	14.5	-	-	-
RNAV1	KEPOR	531016.5 / 0062200.7	TF	Fly-by	046.3 / 049	14.7	-	-	Turn R
RNAV1	ARVOK	530919.0 / 0060335.1	TF	Fly-by	094.8 / 097	11.1	-	-	Turn R
RNAV1	SORIN	530829.3 / 0054822.5	TF	Fly-by	095.1 / 097	9.2	FL070 / FL070	230	-
RNAV1	SIVNA	531152.3 / 0053827.7	TF	Fly-by	060.3 / 063	6.9	FL070 / FL070	230	Turn L
RNAV1	SUGAD	531722.5 / 0053139.8	TF	Fly-by	036.5 / 039	6.9	FL070 / FL070	230	Turn L
RNAV1	DW704	532403.7 / 0052910.1	TF	Fly-by	012.6 / 015	6.9	FL070 / FL070	230	Turn L
RNAV1	DW705	533046.6 / 0053126.4	TF	Fly-by	348.6 / 351	6.9	FL070 / FL070	230	Turn L
RNAV1	DW706	533621.3 / 0053806.9	TF	Fly-by	324.6 / 327	6.9	FL070 / FL070	230	Turn L
RNAV1	LAPMO	532411.0 / 0055644.1	TF	Fly-by	222.5 / 225	16.5	- / A3000	180	Turn L

VATRY2L STAR RWY 28L

VATR2L

Nav. Spec.	WPT Name	Latitude (N)/ Longitude (W)	Path Term	Fly-By Fly-over	True track / Mag track	Distance (NM)	Upper limit / Lower limit	Speed Limit (kts)	Remarks
RNAV1	VATRY	523316.0 / 0053000.0	IF	-	-	-	-	-	-
RNAV1	SORIN	530829.3 / 0054822.5	TF	Fly-by	342.6 / 345	37.0	FL070 / FL070	230	-
RNAV1	SIVNA	531152.3 / 0053827.7	TF	Fly-by	060.3 / 063	6.9	FL070 / FL070	230	Turn R
RNAV1	SUGAD	531722.5 / 0053139.8	TF	Fly-by	036.5 / 039	6.9	FL070 / FL070	230	Turn L
RNAV1	DW704	532403.7 / 0052910.1	TF	Fly-by	012.6 / 015	6.9	FL070 / FL070	230	Turn L
RNAV1	DW705	533046.6 / 0053126.4	TF	Fly-by	348.6 / 351	6.9	FL070 / FL070	230	Turn L
RNAV1	DW706	533621.3 / 0053806.9	TF	Fly-by	324.6 / 327	6.9	FL070 / FL070	230	Turn L
RNAV1	LAPMO	532411.0 / 0055644.1	TF	Fly-by	222.5 / 225	16.5	- / A3000	180	Turn L

Hold Identification – EIDW AD 2.24-22.1

Holding Fix	Latitude (N) / Longitude (W)	Inbound True Track (degrees)	Inbound Mag Track (degrees)	Maximum Indicated Airspeed (kts)	Minimum Holding Altitude (ft)	Maximum Holding Level (FL)	Outbound time (min)	Direction of Turn
KERAV	533742.7 / 0054557.3	205.6	208	230	A5000	FL140	1	R
SORIN	530829.3 / 0054822.5	342.4	345	230	A5000	FL140	1	L