

INSTRUMENT APPROACH CHART- ICAO

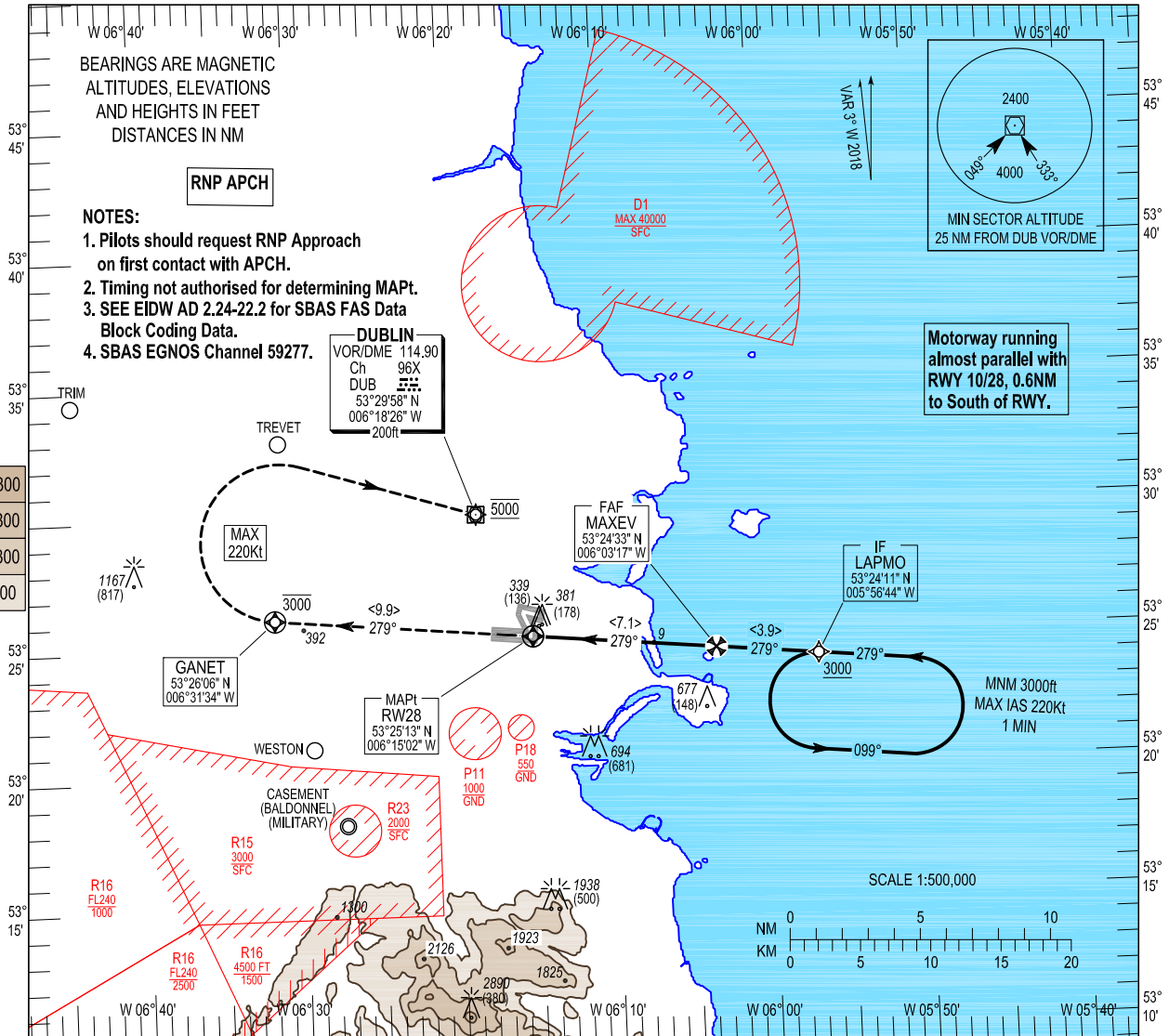
**SBAS CH 59277 E28A**

AERODROME ELEV 242 ft  
HEIGHTS RELATED TO THR RWY 28 - ELEV 202 ft

TWR 118.600  
FINALS 119.930  
GND 121.800  
ATIS 124.530  
APP 121.100

CONSULT NOTAM FOR LATEST INFORMATION

**DUBLIN/DUBLIN RNP RWY 28**  
(ACFT CAT A, B, C, D)  
MIN TEMP -10°C (BARO VNAV)  
MAX TEMP 30°C (BARO VNAV)

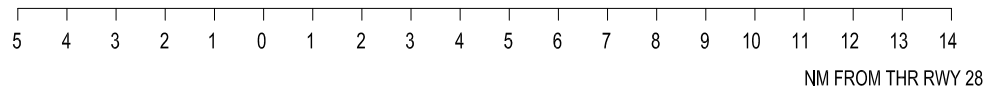
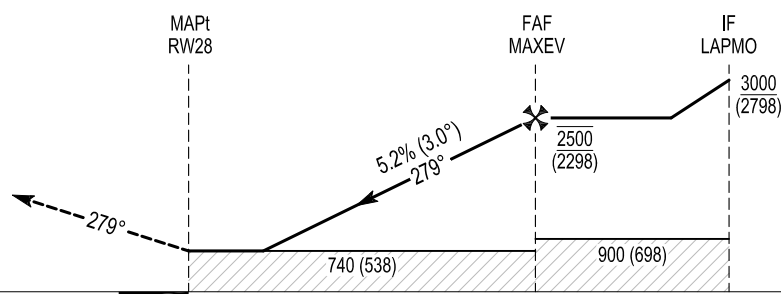


**MISSED APPROACH:**  
Climb extended centreline to GANET not above 3000ft.  
Turn right (MAX IAS 220kts) direct to DUB VOR.  
Climbing to 5000ft and resume en-route flight. Or as instructed by ATC.

RDH 54

ELEV 202 ft (THR RWY 28)

TRANSITION ALTITUDE 5000 ft



OCA (H)	A	B	C	D	Recommended Profile on Final Approach						
					DIST RW28	7.0	6.0	5.0	4.0	3.0	2.0
LPV	452 (250)				ALT (HGT)	2485 (2283)	2165 (1963)	1850 (1648)	1530 (1328)	1210 (1008)	895 (693)
LNAV	740 (538)				Descent Rate 5.2%, (3°), 318 ft/NM	80	100	120	140	160	
LNAV / VNAV	550 (348)	560 (358)	680 (478)	690 (488)		ft / min	425	530	635	745	850
VISUAL MANOEUVRING (These heights are AAL)	830 (588)		1100 (858)								

**DUBLIN RNP RWY 28**

Navigational performance	Path descriptor	WPT Name	Latitude (N) / Longitude (W)	Fly-By or Fly-Over	Distance (nm)	True track / Magnetic track	Upper limit / Lower limit	Speed limit (kts)	VPA / TCH	Remarks
RNP APCH	IF	LAPMO	532411.0 / 0055644.1	Fly-By	-	-	- / 3000	-	-	IF
RNP APCH	TF	MAXEV	532433.5 / 0060317.3	Fly-By	3.9	275.5 / 279	2500 / 2500	-	-	FAF
RNP APCH	TF	RW28	532512.9 / 0061502.1	Fly-Over	7.1	275.4 / 279	-	-	3.00 / 54	MAPt
RNP APCH	CF	GANET	532606.5 / 0063133.8	Fly-Over	9.9	275.3 / 279	3000 / -	220	-	-
RNP APCH	DF	DUB	532957.8 / 0061825.6	Fly-By	-	-	5000	220	-	R

**Hold Identification – LAPMO**

Holding Fix	Latitude (N) / Longitude (W)	Inbound True Track (degrees)	Inbound Mag Track (degrees)	Maximum Indicated Airspeed (kts)	Maximum / Minimum Holding Level / Altitude (FL/ft)	Outbound time (min)	Direction of Turn
LAPMO	532411.0 / 0055644.1	275.6	279	220	FL100 / 3000	1	L

Note: Hold is contingency only & will only be used when directed by ATC

**SBAS FAS Data Block Coding Data**

**Dublin RNP RWY 28**

Input Data	
Parameters	Values
Operation Type	0
SBAS Provider	1
Airport Identifier	EIDW
Runway	28
Runway Direction	0
Approach Performance Designator	0
Route Indicator	
Reference Path Data Selector	0
Reference Path Identifier	E28A
LTP/FTP Latitude	532512.9375N
LTP/FTP Longitude	0061502.0820W
LTP/FTP Ellipsoidal Height (metres)	117.1
FPAP Latitude	532520.7540N
Delta FPAP Latitude (seconds)	7.8165
FPAP Longitude	0061724.2690W
Delta FPAP Longitude (seconds)	-142.1870
Threshold Crossing Height	54.0
TCH Units Selector	0
Glidepath Angle (degrees)	3.00
Course Width (metres)	106.50
Length Offset (metres)	0
HAL (metres)	40.0
VAL (metres)	50.0

Output Data	
Data Block	10 17 04 09 05 1C 00 00 01 38 32 05 D3 EC EC 16 7C 4A 51 FD 93 18 11 3D 00 2A A9 FB 1C 02 2C 01 6A 00 C8 FA 83 8F 58 EF
Calculated CRC Value	838F58EF

Required Additional Data (not CRC wrapped)	
Parameters	Values
ICAO Code	EI
LTP/FTP Orthometric Height (metres)	61.7
FPAP Orthometric Height (metres)	73.9
SBAS EGNOS Channel	59277