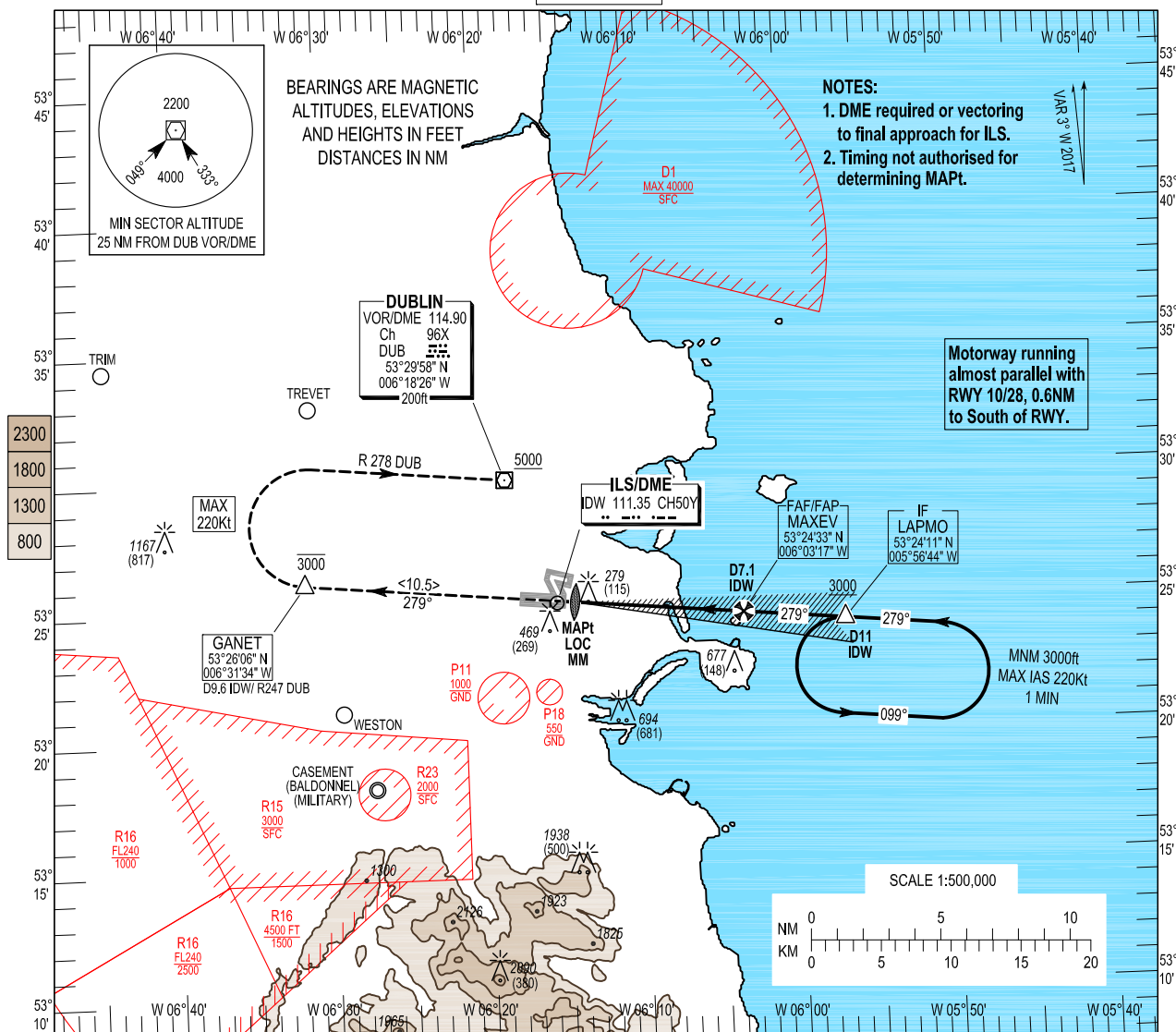


**INSTRUMENT  
APPROACH  
CHART- ICAO**
**AERODROME ELEV 242 ft**

 HEIGHTS RELATED TO  
THR RWY 28 - ELEV 202 ft

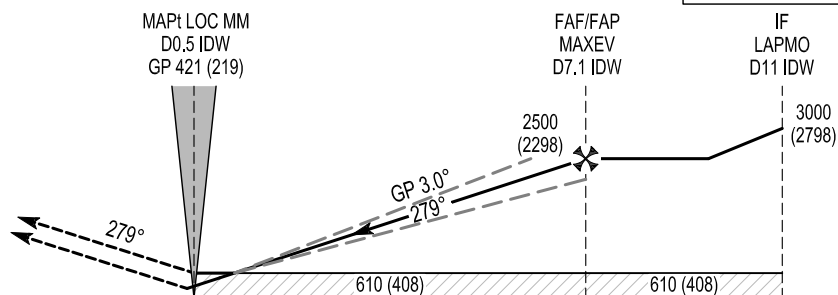
 TWR 118.600  
 FINALS 119.925  
 GND 121.800  
 ATIS 124.525  
 APP 121.100

 CONSULT NOTAM  
 FOR LATEST  
 INFORMATION

**DUBLIN/DUBLIN**  
 ILS CAT I and II or LOC RWY 28  
 (ACFT CAT A, B, C, D)


**MISSED APPROACH:**  
 Climb extended centreline  
 to GANET not above 3000ft,  
 then turn right (MAX IAS 220kts)  
 join RDL278 to DUB DVOR  
 climbing 5000ft and resume  
 en-route flight. Or as instructed by ATC.

**TRANSITION  
ALTITUDE 5000 ft**
**RDH 54**

 ILS/DME READS ZERO AT RWY 28 THR  
 ELEV 202 ft (THR RWY 28)


5 4 3 2 1 0 1 2 3 4 5 6 7 8 9 10 11 12 13

NM FROM THR RWY 28

OCA (H)		A	B	C	D	Recommended Profile on Final Approach									
Straight - in Approach	CAT I	353 (151)	364 (162)	376 (174)	390 (188)	DME (IDE)	7.0	6.0	5.0	4.0	3.0	2.0			
	CAT II	261 (59)	272 (70)	284 (82)	302 (100)	ALT (HGT)	2485 (2283)	2165 (1963)	1850 (1648)	1530 (1328)	1210 (1008)	890 (688)			
	LOC	540 (338)													
VISUAL MANOEUVRING (These heights are AAL)		700 (458)	740 (498)	840 (598)	1100 (858)	Descent Rate 5.2%, (3°), 318 ft/NM			kts	80	100	120	140	160	
					940 (698)				ft / min	425	530	635	745	850	
					N of RWY 28/10										

RWY 28 ILS CAT I & II and LOC only Approach

Descent Angle:	3.00°				
Fix	IF LAPMO	FAF MAXEV	MAPt (D0.5 IDW)	TP GANET	DUB
Fix Coordinates	532411.0N 0055644.1W	532433.5N 0060317.3W	532510.2N 0061412.2W	532606.5N 0063133.8W	532957.8N 0061825.6W
Fix Formation Bearing °T	275.51 IDW	275.43 IDW	275.28 IDW	247.90 DUB	-
Fix Formation Distances	11.00 IDW	7.06 IDW	0.50 IDW	9.60 IDW	-

Holding Identification LAPMO

<i>Holding Fix</i>	<i>Latitude (N) / Longitude (W)</i>	<i>Inbound True Track (degrees)</i>	<i>Inbound Magnetic Track (degrees)</i>	<i>Maximum Indicated Airspeed (kts)</i>	<i>Maximum/ Minimum Holding Level / Altitude (FL/ft)</i>	<i>Time (min)</i>	<i>Direction of Turn</i>
LAPMO	532411.0N 0055644.1W	275.62	279	220	FL100/3000	1	L