

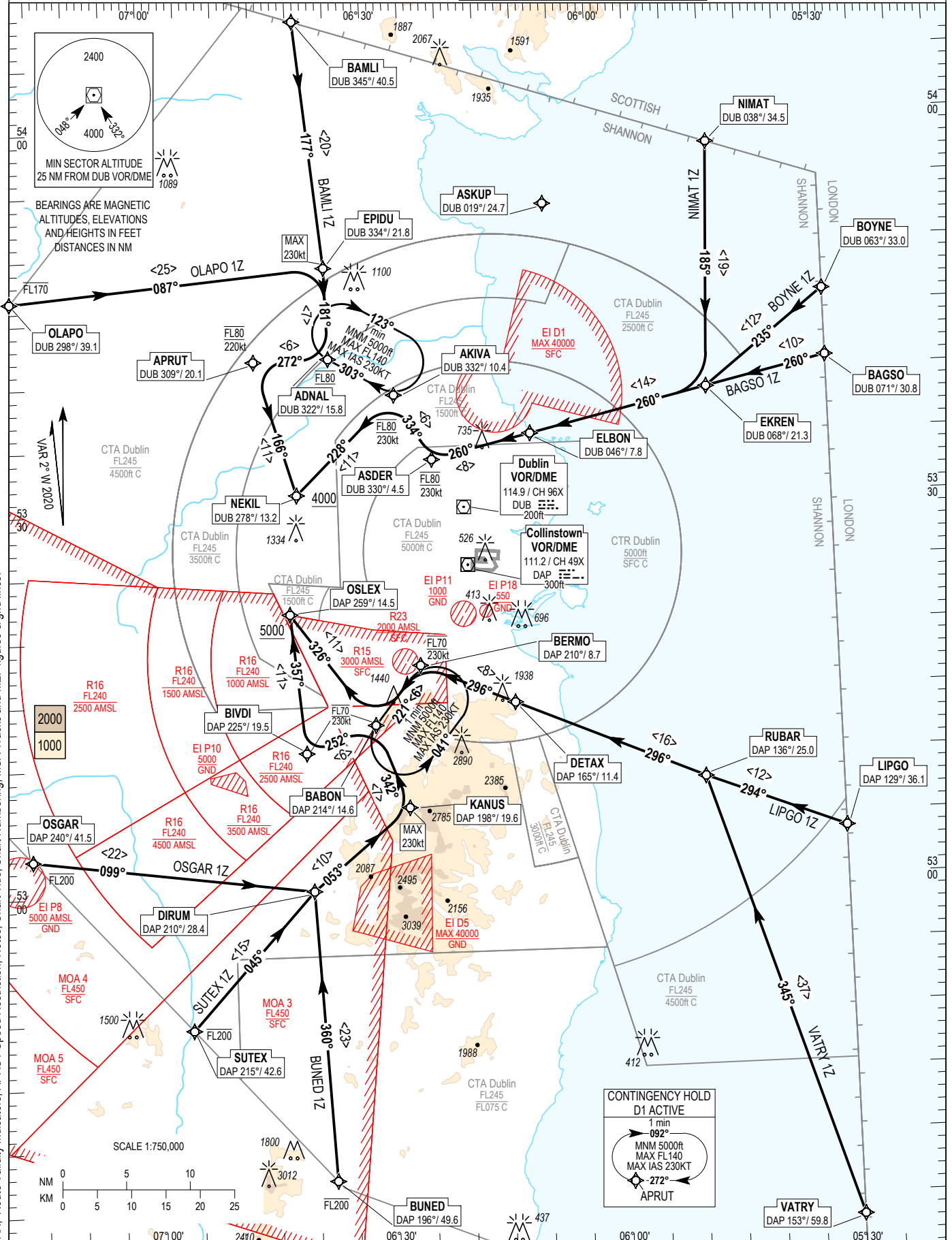
RNAV STANDARD ARRIVAL CHART INSTRUMENT (STAR) - ICAO

TRANS ALT 5000ft TRANS LEVEL by ATC

ATIS APP	124.530	ACC Upper North	129.180
	121.100	ACC Upper South	135.655
		ACC Lower North	132.580
		ACC Lower South	120.755

DUBLIN RWY 10R

NIMAT 1Z, BOYNE 1Z, BAGSO 1Z, LIPGO 1Z, VATRY 1Z, BUNED 1Z, SUTEX 1Z, OSGAR 1Z, OLAPO 1Z, BAMLI 1Z



CHANGE: MAG VAR, Route Validity Indicators, APRUT Speed Restriction, Notes, Chart Title, Chart Numbering, MSA Tracks and MEF figures & grid lines.

NOTES: 1. ASKUP may be used tactically by ATC to ensure aircraft routings are clear of EI D1. 2. MAX IAS 250kts below FL100. 3. DME/DME or GNSS navigation required.
 4. Aircraft routing via ASKUP that experience radio communication failure should follow the appropriate procedure for the runway 10R remaining clear of EI D1.
VERTICAL PLANNING INFORMATION: 1. ACTUAL DESCENT CLEARANCE WILL BE AS DIRECTED BY ATC.
CAUTION: 2. Pilots must inform ATC if unable to comply with any level or speed constraint.

**BAGSOIZ STAR RWY 10R
BAGSIZ**

Nav. Spec.	WPT Name	Latitude (N)/ Longitude (W)	Path Term	Fly-By Fly-over	True track / Mag track	Distance (NM)	Upper limit / Lower limit	Speed Limit (kts)	Remarks
RNAV1	BAGSO	534048.0N / 0053000.0W	IF	-	-	-	-	-	-
RNAV1	EKREN	533843.0N / 0054553.1W	TF	Fly-by	257.7 / 260	9.7	-	-	-
RNAV1	ELBON	533534.1N / 0060921.6W	TF	Fly-by	257.4 / 260	14.3	-	-	-
RNAV1	ASDER	533346.7N / 0062226.4W	TF	Fly-by	257.1 / 260	8.0	FL080 / FL080	230	-
RNAV1	AKIVA	533856.0N / 0062709.6W	TF	Fly-by	331.5 / 334	5.9	FL080 / FL080	230	Turn R
RNAV1	NEKIL	533116.6N / 0064023.6W	TF	Fly-by	225.9 / 228	11.0	- / A4000+	-	Turn L

**BAMLIZ STAR RWY 10R
BAMLIZ**

Nav. Spec.	WPT Name	Latitude (N)/ Longitude (W)	Path Term	Fly-By Fly-over	True track / Mag track	Distance (NM)	Upper limit / Lower limit	Speed Limit (kts)	Remarks
RNAV1	BAMLI	540828.5N / 0063904.0W	IF	-	-	-	-	-	-
RNAV1	EPIDU	534903.5N / 0063554.8W	TF	Fly-by	174.5 / 177	19.5	-	230	-
RNAV1	ADNAL	534153.9N / 0063541.5W	TF	Fly-by	178.9 / 181	7.2	FL080 / FL080	230	Turn R
RNAV1	APRUT	534149.0N / 0064534.9W	TF	Fly-by	269.3 / 272	5.9	FL080 / FL080	220	Turn R
RNAV1	NEKIL	533116.6N / 0064023.6W	TF	Fly-by	163.6 / 166	11.0	- / A4000+	-	Turn L

**BOYNEIZ STAR RWY 10R
BOYNEIZ**

Nav. Spec.	WPT Name	Latitude (N)/ Longitude (W)	Path Term	Fly-By Fly-over	True track / Mag track	Distance (NM)	Upper limit / Lower limit	Speed Limit (kts)	Remarks
RNAV1	BOYNE	534601.6N / 0053000.0W	IF	-	-	-	-	-	-
RNAV1	EKREN	533843.0N / 0054553.1W	TF	Fly-by	232.3 / 235	11.9	-	-	-
RNAV1	ELBON	533534.1N / 0060921.6W	TF	Fly-by	257.4 / 260	14.3	-	-	Turn R
RNAV1	ASDER	533346.7N / 0062226.4W	TF	Fly-by	257.1 / 260	8.0	FL080 / FL080	230	-
RNAV1	AKIVA	533856.0N / 0062709.6W	TF	Fly-by	331.5 / 334	5.9	FL080 / FL080	230	Turn R
RNAV1	NEKIL	533116.6N / 0064023.6W	TF	Fly-by	225.9 / 228	11.0	- / A4000+	-	Turn L

**BUNEDIZ STAR RWY 10R
BUNEIZ**

Nav. Spec.	WPT Name	Latitude (N)/ Longitude (W)	Path Term	Fly-By Fly-over	True track / Mag track	Distance (NM)	Upper limit / Lower limit	Speed Limit (kts)	Remarks
RNAV1	BUNED	523721.9N / 0063748.2W	IF	-	-	-	FL200 / -	-	-
RNAV1	DIRUM	530009.7N / 0063940.0W	TF	Fly-by	357.2 / 360	22.9	-	-	-
RNAV1	KANUS	530630.5N / 0062652.1W	TF	Fly-by	050.5 / 053	10.0	-	230	Turn R
RNAV1	BABON	531303.3N / 0063056.5W	TF	Fly-by	339.5 / 342	7.0	FL070 / FL070	230	Turn L
RNAV1	BIVDI	531059.5N / 0064005.6W	TF	Fly-by	249.5 / 252	5.9	FL070 / FL070	230	Turn L
RNAV1	OSLEX	532155.8N / 0064144.5W	TF	Fly-by	354.8 / 357	11.0	- / A5000+	-	Turn R

**LIPGOIZ STAR RWY 10R
LIPGIZ**

Nav. Spec.	WPT Name	Latitude (N)/ Longitude (W)	Path Term	Fly-By Fly-over	True track / Mag track	Distance (NM)	Upper limit / Lower limit	Speed Limit (kts)	Remarks
RNAV1	LIPGO	530350.1N / 0053000.0W	IF	-	-	-	-	-	-
RNAV1	RUBAR	530808.9N / 0054805.4W	TF	Fly-by	291.7 / 294	11.7	-	-	-
RNAV1	DETAX	531430.7N / 0061235.6W	TF	Fly-by	293.5 / 296	16.1	-	-	-
RNAV1	BERMO	531738.9N / 0062450.8W	TF	Fly-by	293.2 / 296	8.0	FL070 / FL070	230	-
RNAV1	BABON	531303.3N / 0063056.5W	TF	Fly-by	218.6 / 221	5.9	FL070 / FL070	230	Turn L
RNAV1	OSLEX	532155.8N / 0064144.5W	TF	Fly-by	324.0 / 326	11.0	- / A5000+	-	Turn R

**NIMATIZ STAR RWY 10R
NIMAZIZ**

Nav. Spec.	WPT Name	Latitude (N)/ Longitude (W)	Path Term	Fly-By Fly-over	True track / Mag track	Distance (NM)	Upper limit / Lower limit	Speed Limit (kts)	Remarks
RNAV1	NIMAT	535754.1N / 0054431.7W	IF	-	-	-	-	-	-
RNAV1	EKREN	533843.0N / 0054553.1W	TF	Fly-by	182.4 / 185	19.2	-	-	-
RNAV1	ELBON	533534.1N / 0060921.6W	TF	Fly-by	257.4 / 260	14.3	-	-	Turn R
RNAV1	ASDER	533346.7N / 0062226.4W	TF	Fly-by	257.1 / 260	8.0	FL080 / FL080	230	-
RNAV1	AKIVA	533856.0N / 0062709.6W	TF	Fly-by	331.5 / 334	5.9	FL080 / FL080	230	Turn R
RNAV1	NEKIL	533116.6N / 0064023.6W	TF	Fly-by	225.9 / 228	11.0	- / A4000+	-	Turn L

**OLAPOIZ STAR RWY 10R
OLAPIZ**

Nav. Spec.	WPT Name	Latitude (N)/ Longitude (W)	Path Term	Fly-By Fly-over	True track / Mag track	Distance (NM)	Upper limit / Lower limit	Speed Limit (kts)	Remarks
RNAV1	OLAPO	534649.0N / 0071740.6W	IF	-	-	-	FL170 / -	-	-
RNAV1	EPIDU	534903.5N / 0063554.8W	TF	Fly-by	084.5 / 087	24.9	-	230	-
RNAV1	ADNAL	534153.9N / 0063541.5W	TF	Fly-by	178.9 / 181	7.2	FL080 / FL080	230	Turn R
RNAV1	APRUT	534149.0N / 0064534.9W	TF	Fly-by	269.3 / 272	5.9	FL080 / FL080	220	Turn R
RNAV1	NEKIL	533116.6N / 0064023.6W	TF	Fly-by	163.6 / 166	11.0	- / A4000+	-	Turn L

**OSGARIZ STAR RWY 10R
OSGAIZ**

Nav. Spec.	WPT Name	Latitude (N)/ Longitude (W)	Path Term	Fly-By Fly-over	True track / Mag track	Distance (NM)	Upper limit / Lower limit	Speed Limit (kts)	Remarks
RNAV1	OSGAR	530257.9N / 0071612.8W	IF	-	-	-	FL200 / -	-	-
RNAV1	DIRUM	530009.7N / 0063940.0W	TF	Fly-by	097.0 / 099	22.2	-	-	-
RNAV1	KANUS	530630.5N / 0062652.1W	TF	Fly-by	050.5 / 053	10.0	-	230	Turn L
RNAV1	BABON	531303.3N / 0063056.5W	TF	Fly-by	339.5 / 342	7.0	FL070 / FL070	230	Turn L
RNAV1	BIVDI	531059.5N / 0064005.6W	TF	Fly-by	249.5 / 252	5.9	FL070 / FL070	230	Turn L
RNAV1	OSLEX	532155.8N / 0064144.5W	TF	Fly-by	354.8 / 357	11.0	- / A5000+	-	Turn R

SUTEX1Z STAR RWY 10R
SUTE1Z

Nav. Spec.	WPT Name	Latitude (N)/ Longitude (W)	Path Term	Fly-By Fly-over	True track / Mag track	Distance (NM)	Upper limit / Lower limit	Speed Limit (kts)	Remarks
RNAV1	SUTEX	524927.7N / 0065549.3W	IF	-	-	-	FL200 / -	-	-
RNAV1	DIRUM	530009.7N / 0063940.0W	TF	Fly-by	042.3 / 045	14.5	-	-	-
RNAV1	KANUS	530630.5N / 0062652.1W	TF	Fly-by	050.5 / 053	10.0	-	230	Turn R
RNAV1	BABON	531303.3N / 0063056.5W	TF	Fly-by	339.5 / 342	7.0	FL070 / FL070	230	Turn L
RNAV1	BIVDI	531059.5N / 0064005.6W	TF	Fly-by	249.5 / 252	5.9	FL070 / FL070	230	Turn L
RNAV1	OSLEX	532155.8N / 0064144.5W	TF	Fly-by	354.8 / 357	11.0	- / A5000+	-	Turn R

VATRY1Z STAR RWY 10R
VATR1Z

Nav. Spec.	WPT Name	Latitude (N)/ Longitude (W)	Path Term	Fly-By Fly-over	True track / Mag track	Distance (NM)	Upper limit / Lower limit	Speed Limit (kts)	Remarks
RNAV1	VATRY	523316.0N / 0053000.0W	IF	-	-	-	-	-	-
RNAV1	RUBAR	530808.9N / 0054805.4W	TF	Fly-by	342.7 / 345	36.6	-	-	-
RNAV1	DETAX	531430.7N / 0061235.6W	TF	Fly-by	293.5 / 296	16.1	-	-	Turn L
RNAV1	BERMO	531738.9N / 0062450.8W	TF	Fly-by	293.2 / 296	8.0	FL070 / FL070	230	-
RNAV1	BABON	531303.3N / 0063056.5W	TF	Fly-by	218.6 / 221	5.9	FL070 / FL070	230	Turn L
RNAV1	OSLEX	532155.8N / 0064144.5W	TF	Fly-by	324.0 / 326	11.0	- / A5000+	-	Turn R

Hold Identification – EIDW AD 2.24-23.5

Holding Fix	Latitude (N) / Longitude (W)	Inbound True Track (degrees)	Inbound Mag Track (degrees)	Maximum Indicated Airspeed (kts)	Maximum / Minimum Holding Altitude/Level (FL/ft)	Limiting outbound time (min)	Direction of Turn
ADNAL	534153.9 / 0063541.5	300.4	303	230	FL140 / A5000	1	R
BABON	531303.3 / 0063056.5	218.5	221	230	FL140 / A5000	1	L
APRUT	534149.0 / 0064534.9	269.2	272	230	FL140 / A5000	1	R