

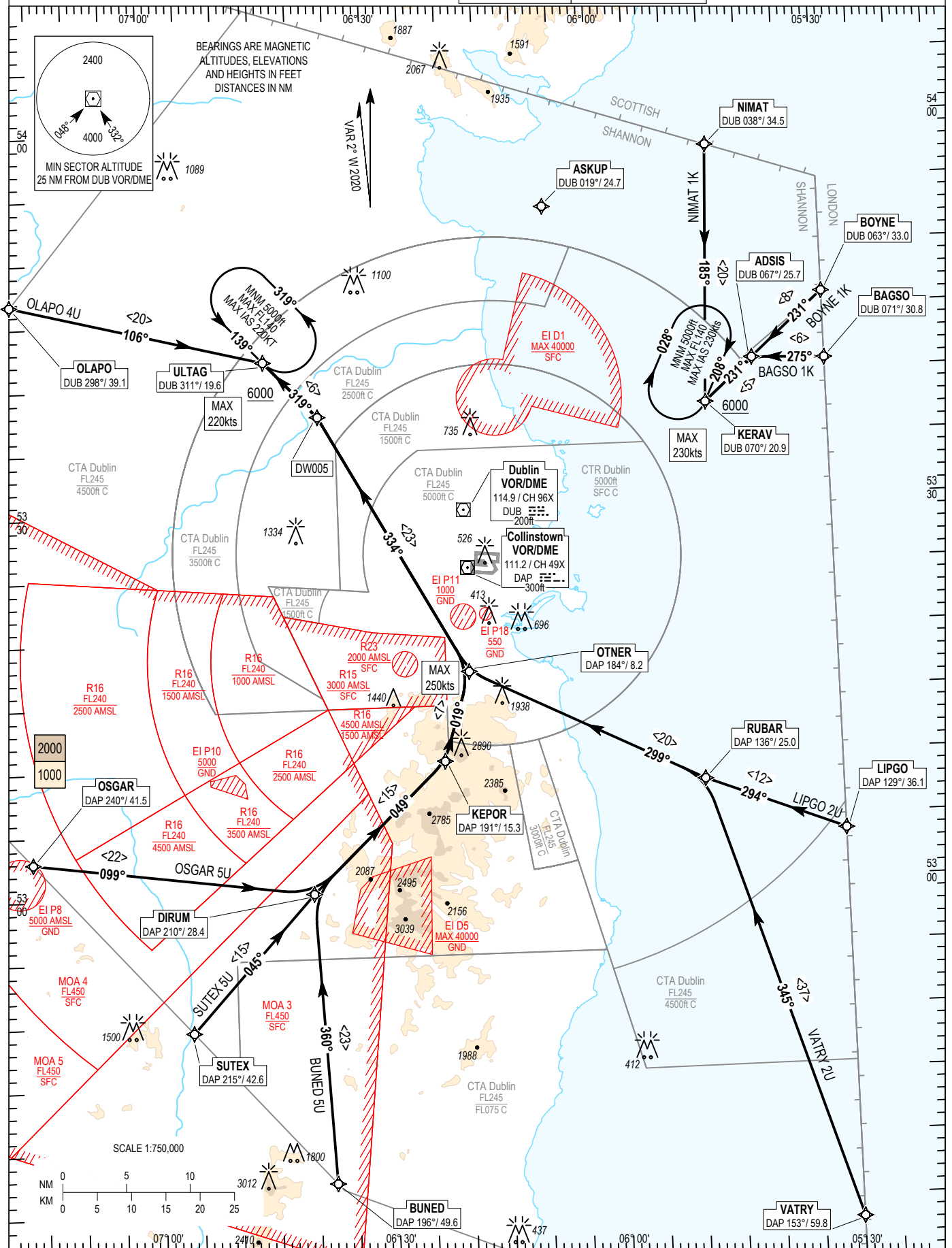
RNAV STANDARD ARRIVAL CHART  
INSTRUMENT (STAR) - ICAO

TRANS ALT 5000ft  
TRANS LEVEL by ATC

ATIS APP	124.530	ACC Upper North	129.180
	121.100	ACC Upper South	135.655
		ACC Lower North	132.580
		ACC Lower South	120.755

DUBLIN RWY 16

NIMAT 1K, BOYNE 1K, BAGSO 1K, LIPGO 5U, VATRY 2U,  
BUNED 5U, SUTEX 5U, OSGAR 5U, OLAPO 4U



CHANGE: MAG VAR, Chart Numbering, Removal of MEF figure & grid lines and Notes.

**NOTES:** 1. ASKUP may be used tactically by ATC to ensure aircraft routings are clear of EI D1. 2. MAX IAS 250kts below FL100. 3. DME/DME or GNSS navigation required.  
 4. Aircraft routing via ASKUP that experience radio communication failure should follow the appropriate procedure for the runway 16 remaining clear of EI D1.  
**VERTICAL PLANNING INFORMATION:** 1. Pilots should plan for descent fro RWY 16; BAGSO at FL100 and KERAV at 6000ft; ULTAG at 6000ft; ACTUAL DESCENT CLEARANCE WILL BE AS DIRECTED BY ATC. **WARNING:** 2. Do not proceed beyond KERAV/ULTAG without ATC clearance, enter hold.

**08 OCT 2020****BAGSO1K CAT A/B/C/D STAR RWY 16****BAGSIK**

Nav. Spec.	WPT Name	Latitude (N)/ Longitude (W)	Path Term	Fly-By Fly-over	Distance (NM)	True track / Mag track	Upper limit / Lower limit	Speed Limit (kts)	Remarks
RNAV1	BAGSO	534048.0 / 0053000.0	IF	Fly-by	-	-	-	-	-
RNAV1	ADSI5	534103.1 / 0053934.0	TF	Fly-by	5.7	272.6 / 275	-	-	-
RNAV1	KERAV	533742.7 / 0054557.3	TF	Fly-by	5.1	228.7 / 231	- / A6000	230	Turn L

**BOYNE1K CAT A/B/C/D STAR RWY 16****BOYNIK**

Nav. Spec.	WPT Name	Latitude (N)/ Longitude (W)	Path Term	Fly-By Fly-over	Distance (NM)	True track / Mag track	Upper limit / Lower limit	Speed Limit (kts)	Remarks
RNAV1	BOYNE	534601.6 / 0053000.0	IF	Fly-by	-	-	-	-	-
RNAV1	ADSI5	534103.1 / 0053934.0	TF	Fly-by	7.6	228.8 / 231	-	-	-
RNAV1	KERAV	533742.7 / 0054557.3	TF	Fly-by	5.1	228.7 / 231	- / A6000	230	-

**BUNED5U CAT A/B/C/D STAR RWY 16****BUNESU**

Nav. Spec.	WPT Name	Latitude (N)/ Longitude (W)	Path Term	Fly-By Fly-over	Distance (NM)	True track / Mag track	Upper limit / Lower limit	Speed Limit (kts)	Remarks
RNAV1	BUNED	523721.9 / 0063748.2	IF	Fly-by	-	-	-	-	-
RNAV1	DIRUM	530009.7 / 0063940.0	TF	Fly-by	22.9	357.2 / 360	-	-	-
RNAV1	KEPOR	531016.5 / 0062200.7	TF	Fly-by	14.7	046.3 / 049	-	-	Turn R
RNAV1	OTNER	531715.0 / 0061827.0	TF	Fly-by	7.3	017.0 / 019	-	250	Turn L
RNAV1	DW005	533736.3 / 0063717.1	TF	Fly-by	23.3	331.2 / 334	-	-	Turn L
RNAV1	ULTAG	534201.0 / 0064417.2	TF	Fly-by	6.1	316.7 / 319	- / A6000	220	Turn L

**LIPGO2U CAT A/B/C/D STAR RWY 16****LIPG2U**

Nav. Spec.	WPT Name	Latitude (N)/ Longitude (W)	Path Term	Fly-By Fly-over	Distance (NM)	True track / Mag track	Upper limit / Lower limit	Speed Limit (kts)	Remarks
RNAV1	LIPGO	530350.1 / 0053000.0	IF	Fly-by	-	-	-	-	-
RNAV1	RUBAR	530808.9 / 0054805.4	TF	Fly-by	11.7	291.7 / 294	-	-	-
RNAV1	OTNER	531715.0 / 0061827.0	TF	Fly-by	20.4	296.7 / 299	-	250	Turn R
RNAV1	DW005	533736.3 / 0063717.1	TF	Fly-by	23.3	331.2 / 334	-	-	Turn R
RNAV1	ULTAG	534201.0 / 0064417.2	TF	Fly-by	6.1	316.7 / 319	- / A6000	220	Turn L

**NIMAT1K CAT A/B/C/D STAR RWY 16****NIMA1K**

Nav. Spec.	WPT Name	Latitude (N)/ Longitude (W)	Path Term	Fly-By Fly-over	Distance (NM)	True track / Mag track	Upper limit / Lower limit	Speed Limit (kts)	Remarks
RNAV1	NIMAT	535754.1 / 0054431.7	IF	Fly-by	-	-	-	-	-
RNAV1	KERAV	533742.7 / 0054557.3	TF	Fly-by	20.2	118.4 / 185	- / A6000	230	-

**OLAPO4U CAT A/B/C/D STAR RWY 16****OLAP4U**

Nav. Spec.	WPT Name	Latitude (N)/ Longitude (W)	Path Term	Fly-By Fly-over	Distance (NM)	True track / Mag track	Upper limit / Lower limit	Speed Limit (kts)	Remarks
RNAV1	OLAPO	534649.0 / 0071740.6	IF	Fly-by	-	-	-	-	-
RNAV1	ULTAG	534201.0 / 0064417.2	TF	Fly-by	20.4	103.4 / 106	- / A6000	220	-

**OSGAR5U CAT A/B/C/D STAR RWY 16****OSGA5U**

Nav. Spec.	WPT Name	Latitude (N)/ Longitude (W)	Path Term	Fly-By Fly-over	Distance (NM)	True track / Mag track	Upper limit / Lower limit	Speed Limit (kts)	Remarks
RNAV1	OSGAR	530257.9 / 0071612.8	IF	Fly-by	-	-	-	-	-
RNAV1	DIRUM	530009.7 / 0063940.0	TF	Fly-by	22.2	097.0 / 099	-	-	-
RNAV1	KEPOR	531016.5 / 0062200.7	TF	Fly-by	14.7	046.3 / 049	-	-	Turn L
RNAV1	OTNER	531715.0 / 0061827.0	TF	Fly-by	7.3	017.0 / 019	-	250	Turn L
RNAV1	DW005	533736.3 / 0063717.1	TF	Fly-by	23.3	331.2 / 334	-	-	Turn L
RNAV1	ULTAG	534201.0 / 0064417.2	TF	Fly-by	6.1	316.7 / 319	- / A6000	220	Turn L

**SUTEX5U CAT A/B/C/D STAR RWY 16****SUTESU**

Nav. Spec.	WPT Name	Latitude (N)/ Longitude (W)	Path Term	Fly-By Fly-over	Distance (NM)	True track / Mag track	Upper limit / Lower limit	Speed Limit (kts)	Remarks
RNAV1	SUTEX	524927.7 / 0065549.3	IF	Fly-by	-	-	-	-	-
RNAV1	DIRUM	530009.7 / 0063940.0	TF	Fly-by	14.5	042.3 / 045	-	-	-
RNAV1	KEPOR	531016.5 / 0062200.7	TF	Fly-by	14.7	046.3 / 049	-	-	Turn R
RNAV1	OTNER	531715.0 / 0061827.0	TF	Fly-by	7.3	017.0 / 019	-	250	Turn L
RNAV1	DW005	533736.3 / 0063717.1	TF	Fly-by	23.3	331.2 / 334	-	-	Turn L
RNAV1	ULTAG	534201.0 / 0064417.2	TF	Fly-by	6.1	316.7 / 319	- / A6000	220	Turn L

08 OCT 2020

## VATRY2U CAT A/B/C/D STAR RWY 16

## VATR2U

Nav. Spec.	WPT Name	Latitude (N)/ Longitude (W)	Path Term	Fly-By Fly-over	Distance (NM)	True track / Mag track	Upper limit / Lower limit	Speed Limit (kts)	Remarks
RNAV1	VATRY	523316.0 / 0053000.0	IF	Fly-by	-	-	-	-	-
RNAV1	RUBAR	530808.9 / 0054805.4	TF	Fly-by	36.6	342.7 / 345	-	-	-
RNAV1	OTNER	531715.0 / 0061827.0	TF	Fly-by	20.4	296.7 / 299	-	250	Turn L
RNAV1	DW005	533736.3 / 0063717.1	TF	Fly-by	23.3	331.2 / 334	-	-	Turn R
RNAV1	ULTAG	534201.0 / 0064417.2	TF	Fly-by	6.1	316.7 / 319	- / A6000	220	Turn L

## HOLDING IDENTIFICATION – EIDW AD2.24-24.1

Holding Fix	Latitude (N) / Longitude (W)	Inbound True Track (°)	Inbound Magnetic Track (°)	Maximum Indicated Airspeed (kts)	Maximum / Minimum Holding Altitude/Level (FL/ft)	Time / Limiting Distance (min/nm)	Direction of Turn
KERAV	533742.7 / 0054557.3	205.6	208	230	FL140 / A5000	1	R
ULTAG	534201.0 / 0064417.2	136.6	139	220	FL140 / A5000	1	L