

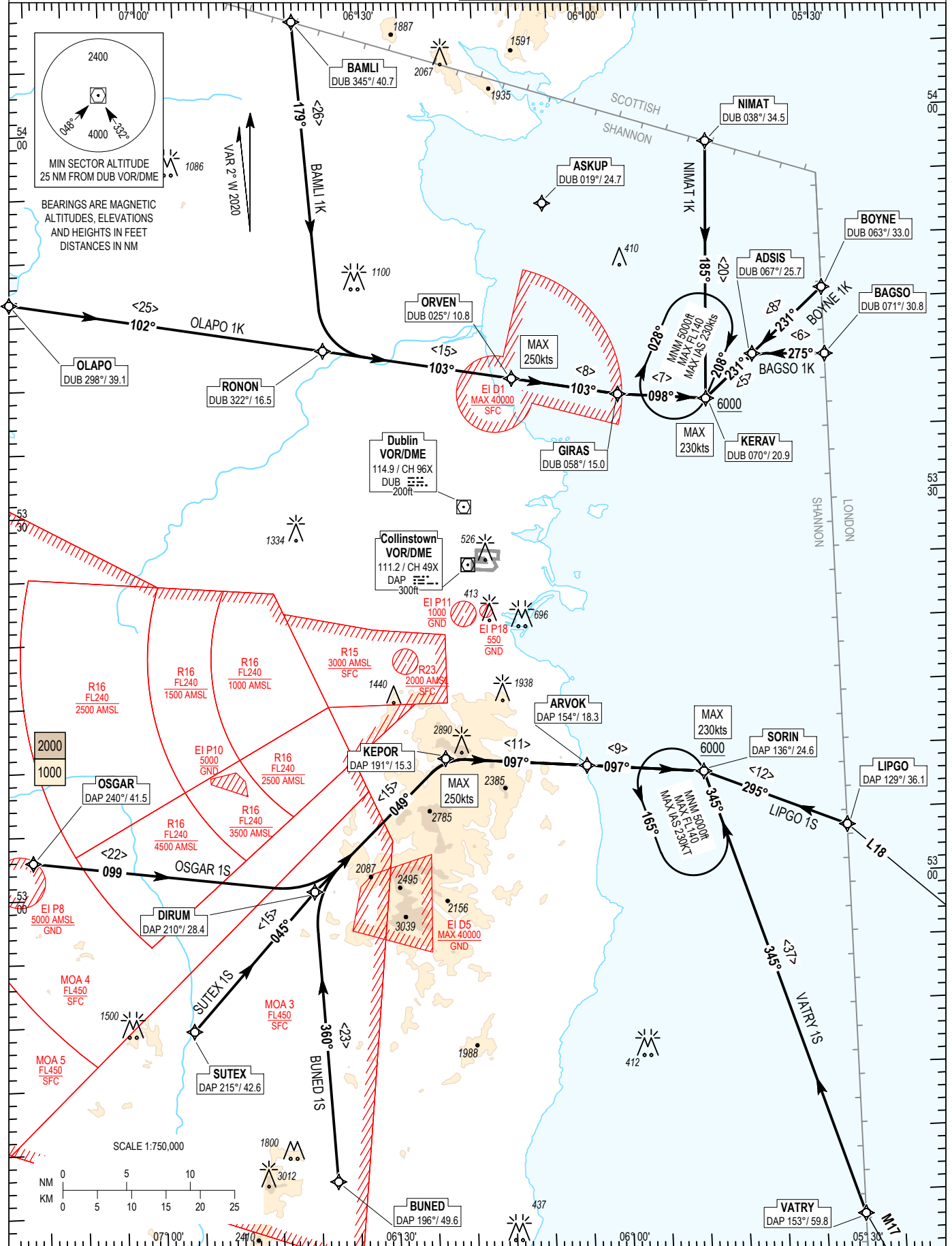
RNAV STANDARD ARRIVAL CHART
INSTRUMENT (STAR) - ICAO

TRANS ALT 5000ft
TRANS LEVEL by ATC

ATIS APP	124.530	ACC Upper North	129.180
	121.100	ACC Upper South	135.655
		ACC Lower North	132.580
		ACC Lower South	120.755

DUBLIN RWY 34

NIMAT 1K, BOYNE 1K, BAGSO 1K, LIPGO 1S, VATRY 1S,
BUNED 1S, SUTEX 1S, OSGAR 1S, OLAPO 1K, BAMLI 1K



CHANGE: MAG VAR, Tracks, Chart Numbering, Frequencies, MSA Tracks, Speed restrictions, Notes and removal of MEF figures & grid lines.

NOTES: 1. ASKUP may be used tactically by ATC to ensure aircraft routings are clear of EI D1. 2. MAX IAS 250kts below FL100. 3. DME/DME or GNSS navigation required.
 4. Aircraft routing via ASKUP that experience radio communication failure should follow the appropriate procedure for the runway 34 remaining clear of EI D1.
VERTICAL PLANNING INFORMATION: 1. ACTUAL DESCENT CLEARANCE WILL BE AS DIRECTED BY ATC. **CAUTION:** 2. Pilots must inform ATC if unable to comply with any level or speed constraint. **WARNING:** 1. Do not proceed beyond KERAV/SORIN without ATC clearance, enter hold.

BAGSO1K CAT A/B/C/D STAR RWY 34

BAGS1K

Nav. Spec.	WPT Name	Latitude (N)/ Longitude (W)	Path Term	Fly-By Fly-over	Distance (NM)	True track / Mag track	Upper limit / Lower limit	Speed Limit (kts)	Remarks
RNAV1	BAGSO	534048.0 / 0053000.0	IF	Fly-by	-	-	-	-	-
RNAV1	ADSI5	534103.1 / 0053934.0	TF	Fly-by	5.7	272.6 / 275	-	-	-
RNAV1	KERAV	533742.7 / 0054557.3	TF	Fly-by	5.1	228.7 / 231	- / A6000	230	Turn L

BAMLI1K CAT A/B/C/D STAR RWY 34

BAMLI1K

Nav. Spec.	WPT Name	Latitude (N)/ Longitude (W)	Path Term	Fly-By Fly-over	Distance (NM)	True track / Mag track	Upper limit / Lower limit	Speed Limit (kts)	Remarks
RNAV1	BAMLI	540828.5 / 0063904.0	IF	Fly-by	-	-	-	-	-
RNAV1	RONON	534233.9 / 0063619.2	TF	Fly-by	26.0	176.4 / 179	-	-	-
RNAV1	ORVEN	533953.5 / 0061129.8	TF	Fly-by	15.0	100.1 / 103	-	250	Turn L
RNAV1	GIRAS	533821.0 / 0055733.2	TF	Fly-by	8.4	100.4 / 103	-	-	-
RNAV1	KERAV	533742.7 / 0054557.3	TF	Fly-by	6.9	095.2 / 098	- / A6000	230	Turn L

BOYNE1K CAT A/B/C/D STAR RWY 34

BOYNI1K

Nav. Spec.	WPT Name	Latitude (N)/ Longitude (W)	Path Term	Fly-By Fly-over	Distance (NM)	True track / Mag track	Upper limit / Lower limit	Speed Limit (kts)	Remarks
RNAV1	BOYNE	534601.6 / 0053000.0	IF	Fly-by	-	-	-	-	-
RNAV1	ADSI5	534103.1 / 0053934.0	TF	Fly-by	7.6	228.8 / 231	-	-	-
RNAV1	KERAV	533742.7 / 0054557.3	TF	Fly-by	5.1	228.7 / 231	- / A6000	230	-

BUNED1S CAT A/B/C/D STAR RWY 34

BUNE1S

Nav. Spec.	WPT Name	Latitude (N)/ Longitude (W)	Path Term	Fly-By Fly-over	Distance (NM)	True track / Mag track	Upper limit / Lower limit	Speed Limit (kts)	Remarks
RNAV1	BUNED	523721.9 / 0063748.2	IF	Fly-by	-	-	-	-	-
RNAV1	DIRUM	530009.7 / 0063940.0	TF	Fly-by	22.9	357.2 / 360	-	-	-
RNAV1	KEPOR	531016.5 / 0062200.7	TF	Fly-by	14.7	046.3 / 049	-	250	Turn R
RNAV1	ARVOK	530919.0 / 0060335.1	TF	Fly-by	11.1	094.8 / 097	-	-	Turn R
RNAV1	SORIN	530829.3 / 0054822.5	TF	Fly-by	9.2	095.1 / 097	- / A6000	230	-

LIPGO1S CAT A/B/C/D STAR RWY 34

LIPG1S

Nav. Spec.	WPT Name	Latitude (N)/ Longitude (W)	Path Term	Fly-By Fly-over	Distance (NM)	True track / Mag track	Upper limit / Lower limit	Speed Limit (kts)	Remarks
RNAV1	LIPGO	530350.1 / 0053000.0	IF	Fly-by	-	-	-	-	-
RNAV1	SORIN	530829.3 / 0054822.5	TF	Fly-by	12.0	292.9 / 295	- / A6000	230	-

NIMAT1K CAT A/B/C/D STAR RWY 34

NIMA1K

Nav. Spec.	WPT Name	Latitude (N)/ Longitude (W)	Path Term	Fly-By Fly-over	Distance (NM)	True track / Mag track	Upper limit / Lower limit	Speed Limit (kts)	Remarks
RNAV1	NIMAT	535754.1 / 0054431.7	IF	Fly-by	-	-	-	-	-
RNAV1	KERAV	533742.7 / 0054557.3	TF	Fly-by	20.2	182.4 / 185	- / A6000	230	-

OLAPO1K CAT A/B/C/D STAR RWY 34

OLAPIK

Nav. Spec.	WPT Name	Latitude (N)/ Longitude (W)	Path Term	Fly-By Fly-over	Distance (NM)	True track / Mag track	Upper limit / Lower limit	Speed Limit (kts)	Remarks
RNAV1	OLAPO	534649.0 / 0071740.6	IF	Fly-by	-	-	-	-	-
RNAV1	RONON	534233.9 / 0063619.2	TF	Fly-by	24.9	099.6 / 102	-	-	-
RNAV1	ORVEN	533953.5 / 0061129.8	TF	Fly-by	15.0	100.1 / 103	-	250	-
RNAV1	GIRAS	533821.0 / 0055733.2	TF	Fly-by	8.4	100.4 / 103	-	-	-
RNAV1	KERAV	533742.7 / 0054557.3	TF	Fly-by	6.9	095.2 / 098	- / A6000	230	Turn L

OSGAR1S CAT A/B/C/D STAR RWY 34

OSGA1S

Nav. Spec.	WPT Name	Latitude (N)/ Longitude (W)	Path Term	Fly-By Fly-over	Distance (NM)	True track / Mag track	Upper limit / Lower limit	Speed Limit (kts)	Remarks
RNAV1	OSGAR	530257.9 / 0071612.8	IF	Fly-by	-	-	-	-	-
RNAV1	DIRUM	530009.7 / 0063940.0	TF	Fly-by	22.2	097.0 / 099	-	-	-
RNAV1	KEPOR	531016.5 / 0062200.7	TF	Fly-by	14.7	046.3 / 049	-	250	Turn L
RNAV1	ARVOK	530919.0 / 0060335.1	TF	Fly-by	11.1	094.8 / 097	-	-	Turn R
RNAV1	SORIN	530829.3 / 0054822.5	TF	Fly-by	9.2	095.1 / 097	- / A6000	230	-

SUTEX1S CAT A/B/C/D STAR RWY 34
SUTE1S

Nav. Spec.	WPT Name	Latitude (N)/ Longitude (W)	Path Term	Fly-By Fly-over	Distance (NM)	True track / Mag track	Upper limit / Lower limit	Speed Limit (kts)	Remarks
RNAV1	SUTEX	524927.7 / 0065549.3	IF	Fly-by	-	-	-	-	-
RNAV1	DIRUM	530009.7 / 0063940.0	TF	Fly-by	14.5	042.3 / 045	-	-	-
RNAV1	KEPOR	531016.5 / 0062200.7	TF	Fly-by	14.7	046.3 / 049	-	250	Turn L
RNAV1	ARVOK	530919.0 / 0060335.1	TF	Fly-by	11.1	094.8 / 097	-	-	Turn R
RNAV1	SORIN	530829.3 / 0054822.5	TF	Fly-by	9.2	095.1 / 097	- / A6000	230	-

VATRY1S CAT A/B/C/D STAR RWY 34
VATR1S

Nav. Spec.	WPT Name	Latitude (N)/ Longitude (W)	Path Term	Fly-By Fly-over	Distance (NM)	True track / Mag track	Upper limit / Lower limit	Speed Limit (kts)	Remarks
RNAV1	VATRY	523316.0 / 0053000.0	IF	Fly-by	-	-	-	-	-
RNAV1	SORIN	530829.3 / 0054822.5	TF	Fly-by	37.0	342.6 / 345	- / A6000	230	-

Holding Identification EIDW AD2.24 - 25.1

Holding Fix	Latitude (N) / Longitude (W)	Inbound True Track (degrees)	Inbound Magnetic Track (degrees)	Maximum Indicated Airspeed (kts)	Maximum / Minimum Holding Level / Altitude (FL/ft)	Time outbound	Direction of Turn
KERAV	533742.7 / 0054557.3	205.6	208	230	FL140 / A5000	1 min	R
SORIN	530829.3 / 0054822.5	342.4	345	230	FL140 / A5000	1 min	L