

INSTRUMENT APPROACH CHART- ICAO

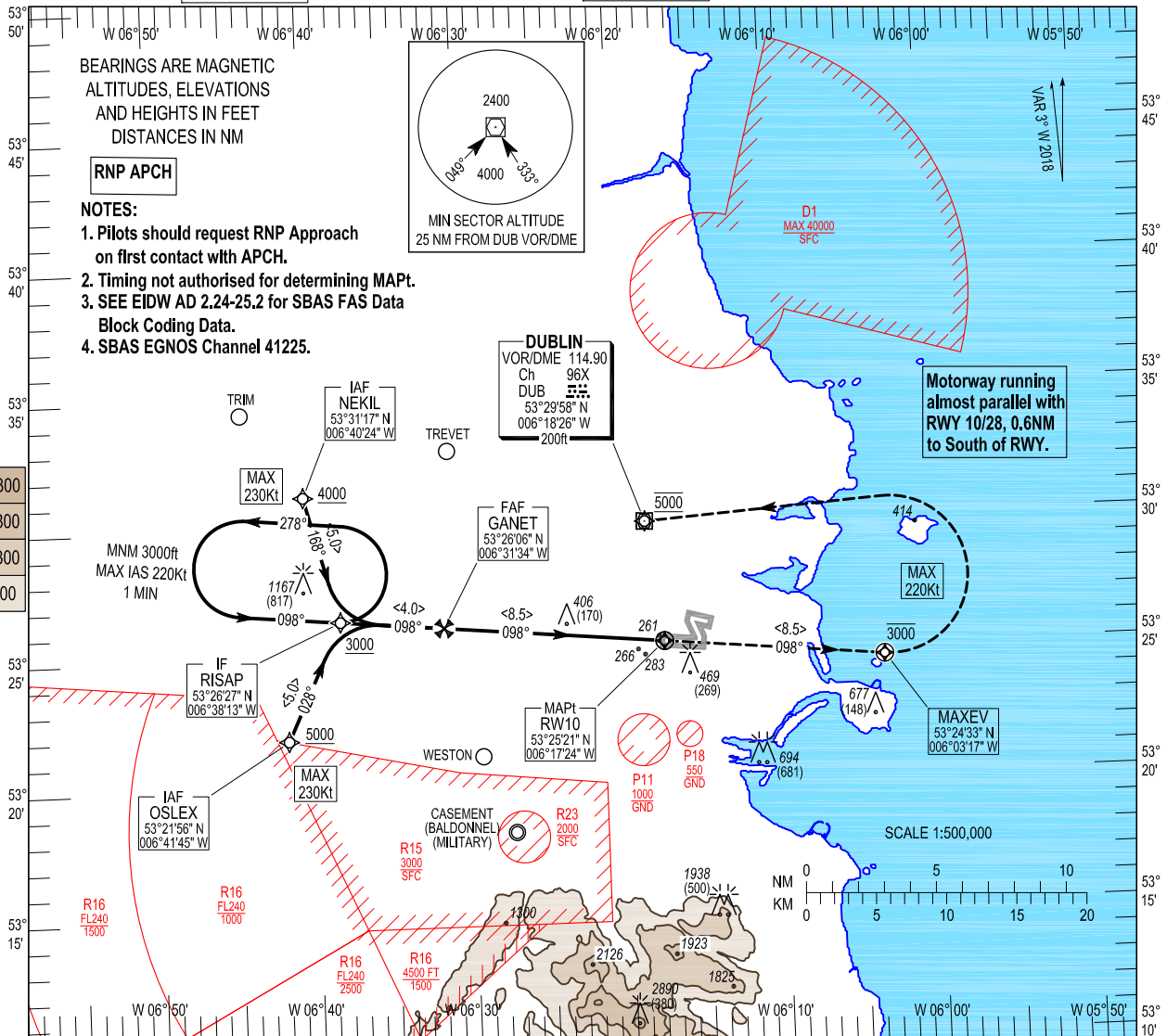
SBAS CH 41225 E10A

AERODROME ELEV 242 ft
HEIGHTS RELATED TO THR RWY 10 - ELEV 242 ft

TWR 118.600
FINALS 119.930
GND 121.800
ATIS 124.530
APP 121.100

CONSULT NOTAM FOR LATEST INFORMATION

DUBLIN/DUBLIN RNP RWY 10
(ACFT CAT A, B, C, D)
MINM TEMP -10°C (BARO VNAV)
MAX TEMP 30°C (BARO VNAV)

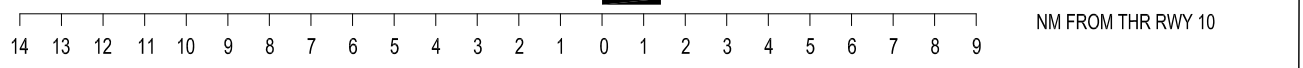


TRANSITION ALTITUDE 5000 ft

MISSED APPROACH:
Climb straight ahead to MAXEV not above 3000ft. Turn left (MAX IAS 220kts) direct to DUB VOR. Climbing to 5000ft and resume en-route flight. Or as instructed by ATC.

RDH 54

ELEV 242 ft (THR RWY 10)



OCA (H)	A				B				C				D				Recommended Profile on Final Approach																											
	LNAV				LNAV / VNAV				LPV				VISUAL MANOEUVRING (These heights are AAL)				DIST RW10	8.0	7.0	6.0	5.0	4.0	3.0	2.0	ALT (HGT)	2845 (2603)	2525 (2283)	2205 (1963)	1890 (1648)	1570 (1328)	1250 (1008)	935 (693)	Descent Rate 5.2%, (3°), 318 ft/NM	kts	80	100	120	140	160	ft / min	425	530	635	745
5000	680 (438)																8.0	7.0	6.0	5.0	4.0	3.0	2.0	2845 (2603)	2525 (2283)	2205 (1963)	1890 (1648)	1570 (1328)	1250 (1008)	935 (693)	5.2%	80	100	120	140	160	425	530	635	745	850			

DUBLIN RNP RWY 10 VIA NEKIL

Navigational performance	Path descriptor	WPT Name	Latitude (N) / Longitude (W)	Fly-By or Fly-Over	Distance (nm)	True track / Magnetic track	Upper limit / Lower limit	Speed limit (kts)	VPA / TCH	Remarks
RNP APCH	IF	NEKIL	533116.6 / 0064023.6	Fly-By	-	-	- / 4000	230		IAF
RNP APCH	TF	RISAP	532627.4 / 0063813.2	Fly-By	5.0	164.9 / 168	- / 3000	-		IF
RNP APCH	TF	GANET	532606.5 / 0063133.8	Fly-By	4.0	095.0 / 098	3000 / 3000	-		FAF
RNP APCH	TF	RW10	532520.8 / 0061724.3	Fly-Over	8.5	095.1 / 098	-	-	3.00 / 54	MAPt
RNP APCH	CF	MAXEV	532433.5 / 0060317.3	Fly-Over	8.5	095.2 / 098	3000 / -	220		-
RNP APCH	DF	DUB	532957.8 / 0061825.6	Fly-By	-	-	@5000	220		L

DUBLIN RNP RWY 10 VIA OSLEX

Navigational performance	Path descriptor	WPT Name	Latitude (N) / Longitude (W)	Fly-By or Fly-Over	Distance (nm)	True track / Magnetic track	Upper limit / Lower limit	Speed limit (kts)	VPA / TCH	Remarks
RNP APCH	IF	OSLEX	532155.8 / 0064144.5	Fly-By	-	-	- / 5000	230	-	IAF
RNP APCH	TF	RISAP	532627.4 / 0063813.2	Fly-By	5.0	024.9 / 028	- / 3000	-	-	IF
RNP APCH	TF	GANET	532606.5 / 0063133.8	Fly-By	4.0	095.0 / 098	3000 / 3000	-	-	FAF
RNP APCH	TF	RW10	532520.8 / 0061724.3	Fly-Over	8.5	095.1 / 098	-	-	3.00 / 54	MAPt
RNP APCH	CF	MAXEV	532433.5 / 0060317.3	Fly-Over	8.5	095.2 / 098	3000 / -	220	-	-
RNP APCH	DF	DUB	532957.8 / 0061825.6	Fly-By	-	-	@5000	220	-	L

Hold Identification – RISAP

Holding Fix	Latitude (N) / Longitude (W)	Inbound True Track (degrees)	Inbound Mag Track (degrees)	Maximum Indicated Airspeed (kts)	Maximum / Minimum Holding Level / Altitude (FL/ft)	Outbound time (min)	Direction of Turn
RISAP	532627.4 / 0063813.2	094.9	098	220	FL100 / 3000	1	L

Note: Hold is contingency only & will only be used when directed by ATC

SBAS FAS Data Block Coding Data

Dublin RNP RWY 10

Input Data	
Parameters	Values
Operation Type	0
SBAS Provider	1
Airport Identifier	EIDW
Runway	10
Runway Direction	0
Approach Performance Designator	0
Route Indicator	
Reference Path Data Selector	0
Reference Path Identifier	E10A
LTP/FTP Latitude	532520.7540N
LTP/FTP Longitude	0061724.2690W
LTP/FTP Ellipsoidal Height (metres)	130.3
FPAP Latitude	532512.6705N
Delta FPAP Latitude (seconds)	-8.0835
FPAP Longitude	0061457.2430W
Delta FPAP Longitude (seconds)	147.0260
Threshold Crossing Height	54.0
TCH Units Selector	0
Glidepath Angle (degrees)	3.00
Course Width (metres)	143.0
Length Offset (metres)	0
HAL (metres)	40.0
VAL (metres)	50.0

Output Data	
Data Block	10 17 04 09 05 0A 00 00 01 30 31 05 E4 29 ED 16 A6 F3 4C FD 17 19 D9 C0 FF A4 7C 04 1C 02 2C 01 FC 00 C8 FA 35 29 9B 42
Calculated CRC Value	35299B42

Required Additional Data (not CRC wrapped)	
Parameters	Values
ICAO Code	EI
LTP/FTP Orthometric Height (metres)	73.9
FPAP Orthometric Height (metres)	61.7
SBAS EGNOS Channel	41225