

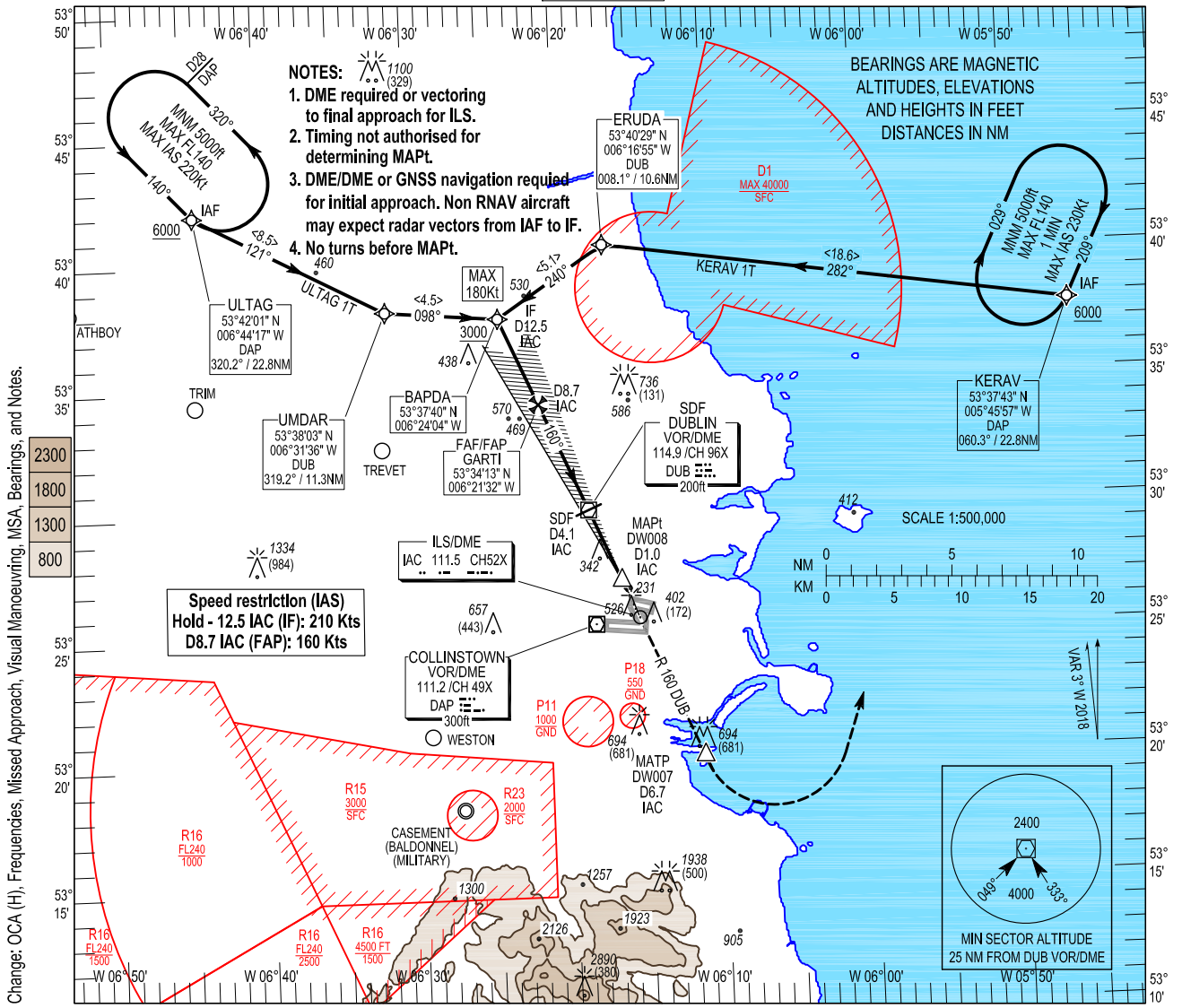
INSTRUMENT APPROACH CHART- ICAO

AERODROME ELEV 242 ft
 HEIGHTS RELATED TO THR RWY 16 - ELEV 217 ft

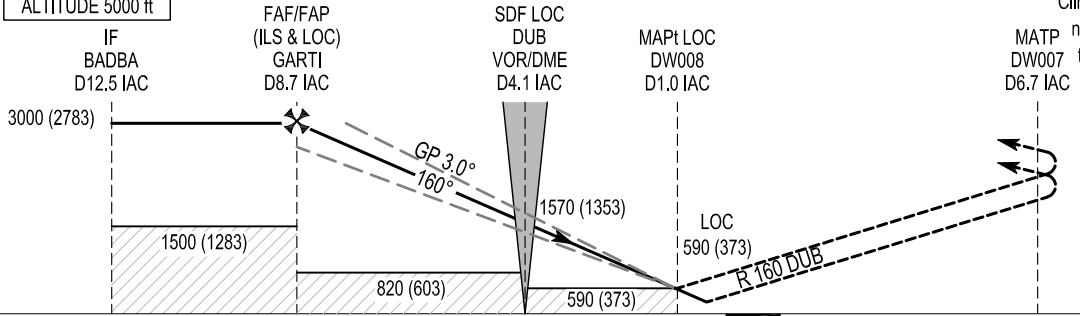
TWR 118.600
 FINALS 119.930
 GND 121.800
 ATIS 124.530
 APP 121.100

CONSULT NOTAM FOR LATEST INFORMATION

DUBLIN/DUBLIN
 ILS CAT I or LOC RWY 16
 (ACFT CAT A, B, C, D)



TRANSITION ALTITUDE 5000 ft



MISSED APPROACH:
 Climb straight ahead to DW007 not above 3000ft and turn left to KERAV climbing to 5000ft to join the hold.
 Or as directed by ATC. Avoid routing through EI D1 when active.

[ILS RDH 54]
 ILS/DME READS ZERO AT RWY 16 THR ELEV 217 ft (THR RWY 16)

14					13					12					11					10					9					8					7					6					5					4					3					2					1					0					1					2					3					4					5					6					7				
NM FROM THR RWY 16																																																																																																													

OCA (H)		A	B	C	D	Recommended Profile on Final Approach for LOC														
Straight-in Approach	CAT I	393 (176)	401 (184)	409 (192)	419 (202)	DME (IAC)	8.0	7.0	6.0	5.0	4.0	3.0	2.0							
	LOC	590 (373)				ALT (HGT)	2820 (2603)	2500 (2283)	2180 (1963)	1865 (1648)	1545 (1328)	1225 (1008)	910 (693)							
VISUAL MANOEUVRING (These heights are AAL)		830 (588)		1100 (858)		Descent Rate 5.2%, (3°), 318 ft/NM							80	100	120	140	160			
													ft / min	425	530	635	745	850		

KERAV IT INITIAL APP CAT A/B/C/D ILS RWY16

Navigation Performance	Path Terminator	WPT Name	Latitude (N) / Longitude (W)	Fly-By or Fly-Over	Distance (NM)	True Track / Magnetic Track	Upper Limit/Lower Limit	Speed Limit (kts)	Remarks
RNAV1	IF	KERAV	533742.7 / 0054557.3	Fly-By	-	-	-	-	-
RNAV1	TF	ERUDA	534029.0 / 0061655.0	Fly-By	18.6	278.8 / 282	-	-	-
RNAV1	CF	BAPDA	533740.0 / 0062403.7	Fly-By	5.1	236.5 / 240	+ 3000	180	

ULTAG 1T INITIAL APP CAT A/B/C/D ILS RWY16

Navigation Performance	Path Terminator	WPT Name	Latitude (N) / Longitude (W)	Fly-By or Fly-Over	Distance (NM)	True Track / Magnetic Track	Upper Limit/Lower Limit	Speed Limit (kts)	Remarks
RNAV1	IF	ULTAG	534201.0 / 0064417.2	Fly-By	-	-	-	-	-
RNAV1	TF	UMDAR	533803.3 / 0063135.5	Fly-By	8.5	117.6 / 121	-	-	-
RNAV1	CF	BAPDA	533740.0 / 0062403.7	Fly-By	5.0	094.9 / 098	+ 3000	180	

RWY 16 ILS CAT I & II or LOC Approach

Descent Angle:	3.00°				
Fix	IF BAPDA	FAP/FAF GARTI	SDF DUB (LOC)	MAPt DW008 (LOC)	MATP DW007
Fix Coordinates	533740.0N 0062403.7W	533412.8N 0062132.1W	532957.7N 0061825.6W	532707.3N 0061622.2W	532003.5N 0061115.7W
Fix Formation Bearing °T	156.58 IAC	156.58 IAC	156.58 IAC	156.58 IAC	336.64 IAC
Fix Formation Distances	12.50 IAC	8.73 IAC	4.08 IAC	0.98 IAC	6.72 IAC

Holding Identification Runway 16

Holding Fix	Latitude (N) / Longitude (W)	Inbound True Track (degrees)	Inbound Magnetic Track (degrees)	Maximum Indicated Airspeed (kts)	Maximum/Minimum Holding Level / Altitude (FL/ft)	Distance Outbound	Direction of Turn
KERAV	533742.7 / 0054557.3	205.5	209	230	FL140/5000	5.4NM	R
ULTAG	534201.0 / 0064417.2	136.7	140	220	FL140/5000	5.0NM	L

--