

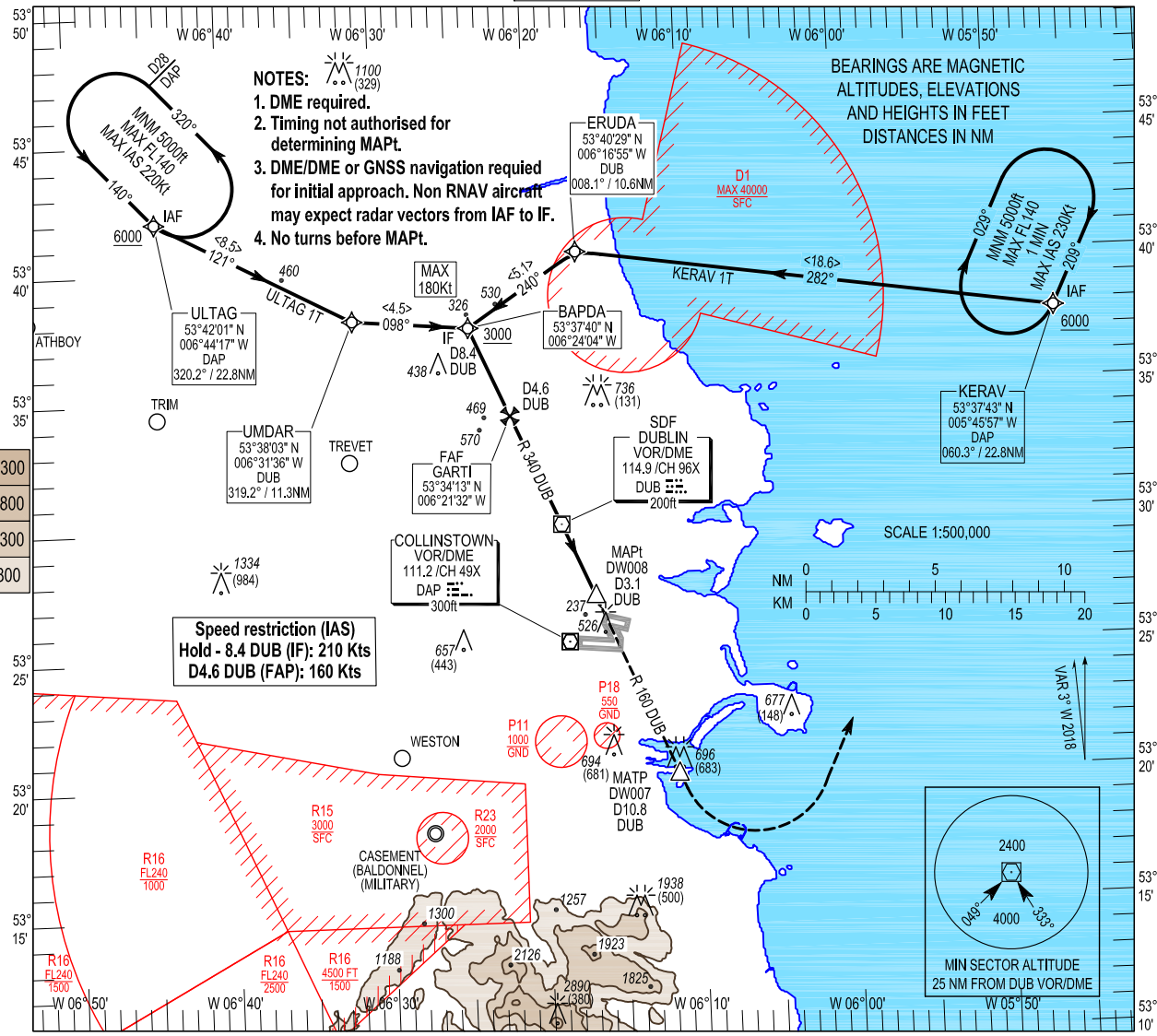
INSTRUMENT
APPROACH
CHART- ICAO

AERODROME ELEV 242 ft
HEIGHTS RELATED TO
THR RWY 16 - ELEV 217 ft

TWR 118.600
FINALS 119.930
GND 121.800
ATIS 124.530
APP 121.100

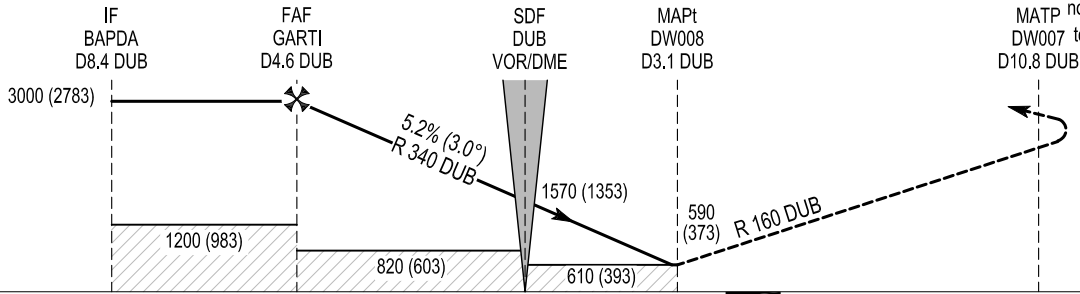
CONSULT NOTAM
FOR LATEST
INFORMATION

DUBLIN/DUBLIN
VOR RWY 16
(ACFT CAT A, B, C, D)



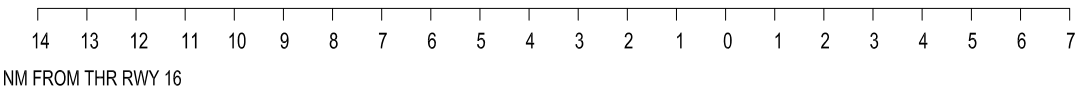
Change: KERAV & ULTAG Holding table.

TRANSITION
ALTITUDE 5000 ft



MISSED APPROACH:
Climb straight ahead to DW007
MATP not above 3000ft and turn left
DW007 to KERAV climbing to 5000ft
to join the hold.
Or as directed by ATC.
Avoid routing through
EI D1 when active.

DUB DME READS D4.1
AT RWY 16 THR
ELEV 217 ft (THR RWY 16)



OCA (H)	A	B	C	D	Recommended Profile on Final Approach										
					Before DUB D4.0	Before DUB D3.0	Before DUB D2.0	Before DUB D1.0	DUB VOR	After DUB D1.0	After DUB D2.0	After DUB D3.0			
Straight - in Approach	610 (393)				2840 (2623)	2525 (2308)	2205 (1988)	1885 (1668)	1570 (1353)	1250 (1033)	930 (713)	610 (393)			
VISUAL MANOEUVRING (These heights are AAL)	830 (588)		1100 (858)		Descent Rate 5.2%, (3°), 318 ft/NM					80	100	120	140	160	
											fts	425	530	635	745

KERAV IT INITIAL APP CAT A/B/C/D VOR RWY16

Navigation Performance	Path Terminator	WPT Name	Latitude (N) / Longitude (W)	Fly-By or Fly-Over	Distance (NM)	True Track / Magnetic Track	Upper Limit/Lower Limit	Speed Limit (kts)	Remarks
RNAV1	IF	KERAV	533742.7 / 0054557.3	Fly-By	-	-	-	-	-
RNAV1	TF	ERUDA	534029.0 / 0061655.0	Fly-By	18.6	278.8 / 282	-	-	-
RNAV1	CF	BAPDA	533740.0 / 0062403.7	Fly-By	5.1	236.5 / 240	+ 3000	180	

ULTAG 1T INITIAL APP CAT A/B/C/D VOR RWY16

Navigation Performance	Path Terminator	WPT Name	Latitude (N) / Longitude (W)	Fly-By or Fly-Over	Distance (NM)	True Track / Magnetic Track	Upper Limit/Lower Limit	Speed Limit (kts)	Remarks
RNAV1	IF	ULTAG	534201.0 / 0064417.2	Fly-By	-	-	-	-	-
RNAV1	TF	UMDAR	533803.3 / 0063135.5	Fly-By	8.5	117.6 / 121	-	-	-
RNAV1	CF	BAPDA	533740.0 / 0062403.7	Fly-By	5.0	094.9 / 098	+ 3000	180	

RWY 16 VOR Approach

Descent Angle:	3.00°				
Fix	IF BAPDA	FAF GARTI	SDF DUB	MAPt DW008	MATP DW007
Fix Coordinates	533740.0N 0062403.7W	533412.8N 0062132.1W	532957.7N 0061825.6W	532707.3N 0061622.2W	532003.5N 0061115.7W
Fix Formation Bearing °T	336.51 DUB	336.47 DUB	N/A	156.63 DUB	156.58 DUB
Fix Formation Distances	8.42 DUB	4.64 DUB	N/A	3.10 DUB	10.81 DUB

Holding Identification Runway 16

Holding Fix	Latitude (N) / Longitude (W)	Inbound True Track (degrees)	Inbound Magnetic Track (degrees)	Maximum Indicated Airspeed (kts)	Maximum/Minimum Holding Level / Altitude (FL/ft)	Outbound time (min)/ Distance Outbound	Direction of Turn
KERAV	533742.7 / 0054557.3	205.5	209	230	FL140/5000	1 Min	R
ULTAG	534201.0 / 0064417.2	136.7	140	220	FL140/5000	D28 DAP	L