

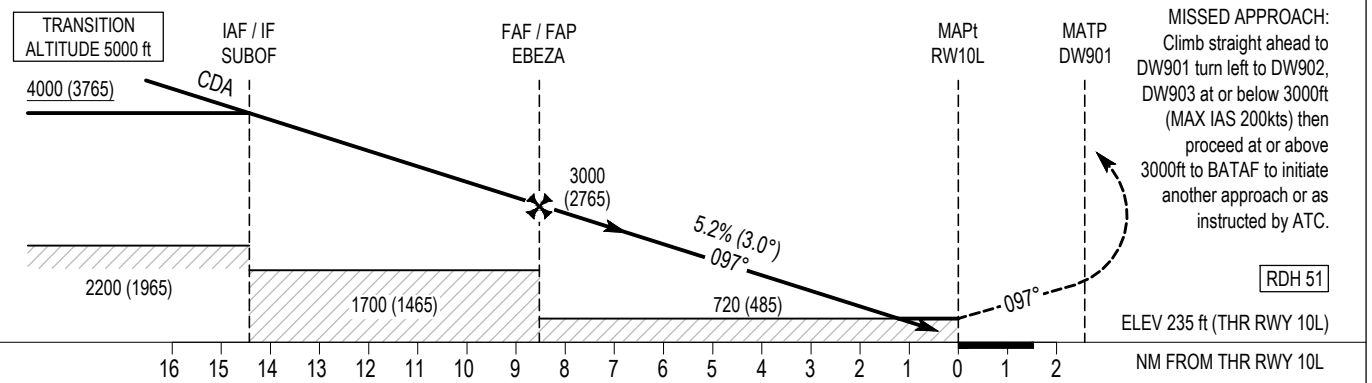
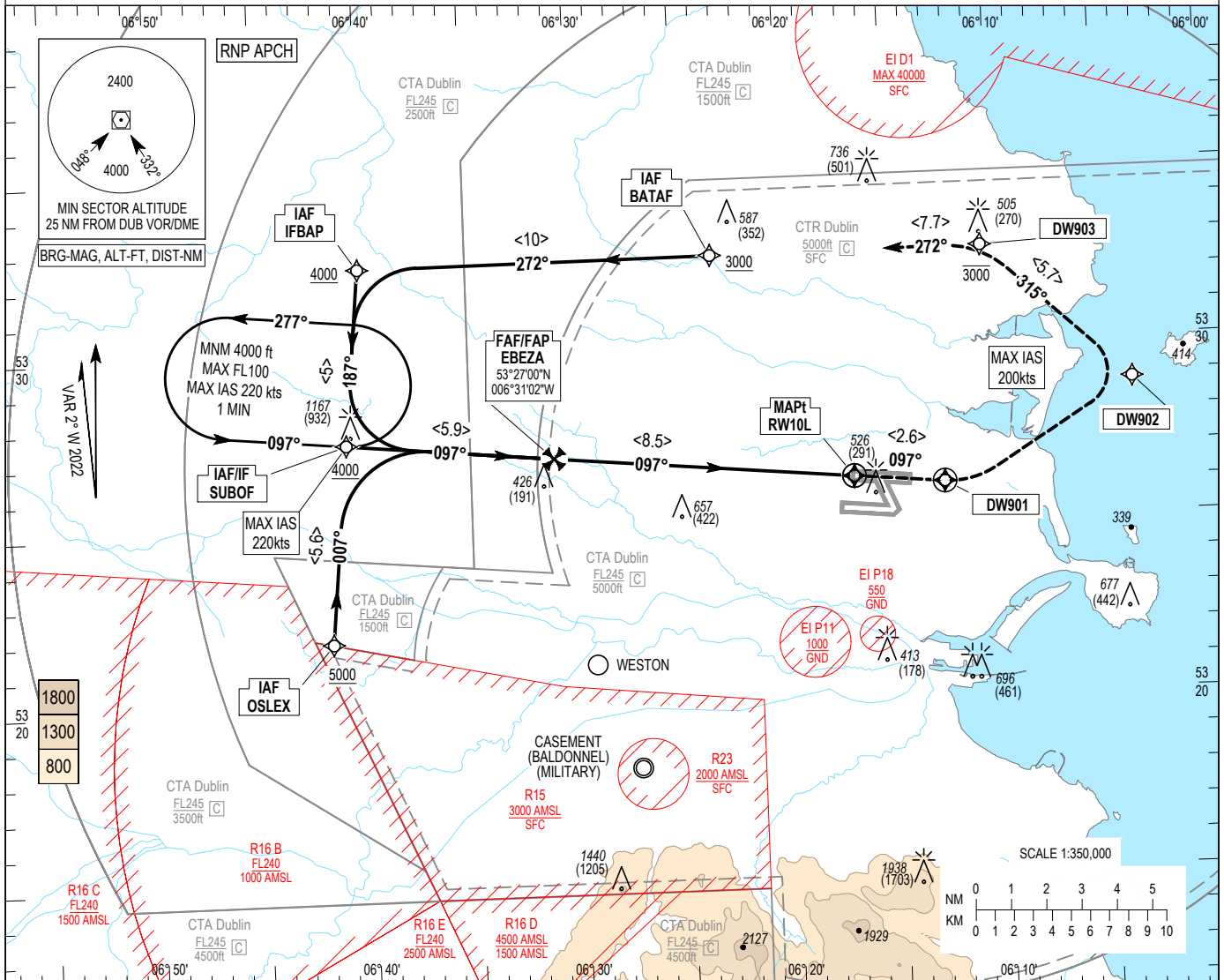
**INSTRUMENT APPROACH CHART- ICAO**

**AERODROME ELEV 243 ft**  
HEIGHTS RELATED TO THR RWY 10L - ELEV 235 ft

ATIS ARR 124.530  
APP 121.100  
FINALS 119.930  
TWR NTH 124.680  
GND NTH 125.885

SBAS  
CH 52341  
E10B

**DUBLIN/DUBLIN**  
RNP RWY 10L  
MNM TEMP -10°C (BARO VNAV)  
MAX TEMP 50°C (BARO VNAV)



<b>OCA (H)</b>	A	B	C	D
<b>LNAV</b>	720 (485)			
<b>LNAV / VNAV</b>	550 (315)	560 (325)	580 (345)	610 (375)
<b>LPV</b>	590 (355)	600 (365)	610 (375)	620 (385)
<b>Visual Manoeuvring (Heights AAL)</b>	830 (588)		1100 (858)	

**NOTE:**  
1. Pilots should request RNP Approach on first contact with APCH.

**Recommended LNAV Profile on Final Approach**

<b>DIST from THR (NM)</b>	8	7	6	5	4	3	2
<b>ALT / HT (ft)</b>	2830 (2595)	2515 (2280)	2195 (1960)	1875 (1640)	1560 (1325)	1240 (1005)	920 (685)
<b>Ground Speed</b>	fts	80	100	110	120	140	160
<b>Descent rate gradient - 5.2% (3.0°) 318 ft/NM</b>	ft / min	430	530	580	640	740	850

CHANGE: AD elevation, SUBOF label, Profile.

**Dublin RNP RWY 10L via OSLEX**

Nav. Spec.	WPT Name	Latitude (N)/ Longitude (W)	Path Term	Fly-By Fly-over	True track / Mag track	Distance (NM)	Upper limit / Lower limit	Speed Limit (kts)	VPA (°) / TCH (ft)	Remarks
RNP APCH	OSLEX	532155.8 / 0064144.5	IF	-	-	-	- / +A5000	-	-	-
RNP APCH	SUBOF	532732.5 / 0064052.5	TF	Fly-By	005.3 / 007	5.6	- / +A4000	220	-	-
RNP APCH	EBEZA	532700.2 / 0063102.2	TF	Fly-By	095.2 / 097	5.9	-	-	-	Turn R
RNP APCH	RW10L	532613.8 / 0061650.2	TF	Fly-Over	095.1 / 097	8.5	-	-	3.00 / 51	-
RNP APCH	DW901	532600.2 / 0061233.4	CF	Fly-Over	095.0 / 097	2.6	-	200	-	R082 DAP/D3.4 DAP
RNP APCH	DW902	532846.7 / 0060330.3	DF	Fly-By	-	-	-	200	-	Turn L
RNP APCH	DW903	533238.5 / 0061030.2	TF	Fly-By	312.8 / 315	5.7	-A3000 / -	200	-	Turn L
RNP APCH	BATAF	533236.0 / 0062320.5	TF	Fly-By	269.8 / 272	7.7	- / +A3000	200	-	Turn L

**Dublin RNP RWY 10L via BATAF**

Nav. Spec.	WPT Name	Latitude (N)/ Longitude (W)	Path Term	Fly-By Fly-over	True track / Mag track	Distance (NM)	Upper limit / Lower limit	Speed Limit (kts)	VPA (°) / TCH (ft)	Remarks
RNP APCH	BATAF	533236.0 / 0062320.5	IF	-	-	-	-	-	-	-
RNP APCH	IFBAP	533230.8 / 0064006.2	TF	Fly-By	269.6 / 272	10.0	- / +A4000	-	-	-
RNP APCH	SUBOF	532732.5 / 0064052.5	TF	Fly-By	185.3 / 187	5.0	- / +A4000	220	-	Turn L
RNP APCH	EBEZA	532700.2 / 0063102.2	TF	Fly-By	095.2 / 097	5.9	-	-	-	Turn L
RNP APCH	RW10L	532613.8 / 0061650.2	TF	Fly-Over	095.1 / 097	8.5	-	-	3.00 / 51	-
RNP APCH	DW901	532600.2 / 0061233.4	CF	Fly-Over	095.0 / 097	2.6	-	200	-	R082 DAP / D3.4 DAP
RNP APCH	DW902	532846.7 / 0060330.3	DF	Fly-By	-	-	-	200	-	Turn L
RNP APCH	DW903	533238.5 / 0061030.2	TF	Fly-By	312.8 / 315	5.7	-A3000 / -	200	-	Turn L
RNP APCH	BATAF	533236.0 / 0062320.5	TF	Fly-By	269.8 / 272	7.7	- / +A3000	200	-	Turn L

**Dublin RNP RWY 10L via IFBAP**

Nav. Spec.	WPT Name	Latitude (N)/ Longitude (W)	Path Term	Fly-By Fly-over	True track / Mag track	Distance (NM)	Upper limit / Lower limit	Speed Limit (kts)	VPA (°) / TCH (ft)	Remarks
RNP APCH	IFBAP	533230.8 / 0064006.2	IF	-	-	-	- / +A4000	-	-	-
RNP APCH	SUBOF	532732.5 / 0064052.5	TF	Fly-By	185.3 / 187	5.0	- / +A4000	220	-	-
RNP APCH	EBEZA	532700.2 / 0063102.2	TF	Fly-By	095.2 / 097	5.9	-	-	-	Turn L
RNP APCH	RW10L	532613.8 / 0061650.2	TF	Fly-Over	095.1 / 097	8.5	-	-	3.00 / 51	-
RNP APCH	DW901	532600.2 / 0061233.4	CF	Fly-Over	095.0 / 097	2.6	-	200	-	R082 DAP / D3.4 DAP
RNP APCH	DW902	532846.7 / 0060330.3	DF	Fly-By	-	-	-	200	-	Turn L
RNP APCH	DW903	533238.5 / 0061030.2	TF	Fly-By	312.8 / 315	5.7	-A3000 / -	200	-	Turn L
RNP APCH	BATAF	533236.0 / 0062320.5	TF	Fly-By	269.8 / 272	7.7	- / +A3000	200	-	Turn L

**Dublin RNP RWY 10L via SUBOF**

Nav. Spec.	WPT Name	Latitude (N)/ Longitude (W)	Path Term	Fly-By Fly-over	True track / Mag track	Distance (NM)	Upper limit / Lower limit	Speed Limit (kts)	VPA (°) / TCH (ft)	Remarks
RNP APCH	SUBOF	532732.5 / 0064052.5	IF	-	-	-	- / +A4000	220	-	-
RNP APCH	EBEZA	532700.2 / 0063102.2	TF	Fly-By	095.2 / 097	5.9	-	-	-	-
RNP APCH	RW10L	532613.8 / 0061650.2	TF	Fly-Over	095.1 / 097	8.5	-	-	3.00 / 51	-
RNP APCH	DW901	532600.2 / 0061233.4	CF	Fly-Over	095.0 / 097	2.6	-	200	-	R082 DAP / D3.4 DAP
RNP APCH	DW902	532846.7 / 0060330.3	DF	Fly-By	-	-	-	200	-	Turn L
RNP APCH	DW903	533238.5 / 0061030.2	TF	Fly-By	312.8 / 315	5.7	-A3000 / -	200	-	Turn L
RNP APCH	BATAF	533236.0 / 0062320.5	TF	Fly-By	269.8 / 272	7.7	- / +A3000	200	-	Turn L

**Hold Identification – SUBOF**

Holding Fix	Latitude (N) / Longitude (W)	Inbound True Track (degrees)	Inbound Mag Track (degrees)	Maximum Indicated Airspeed (kts)	Minimum Holding Altitude/ Level (FL/ft)	Maximum Holding Altitude/ Level (FL/ft)	Outbound time (min)	Direction of Turn
SUBOF	532732.5 / 0064052.5	095.1	097	220	+A4000	-FL100	1	L

SBAS FAS Data Block Coding Data  
Dublin RNP RWY10L

<b>Input Data</b>	
Operation Type	0
Service Provider	1
Airport Identifier	EIDW
Runway	10
Runway Letter	3 (L)
Approach Performance Designator	0
Route Indicator	
Reference Path Data Selector	0
Reference Path Identifier	E10B
LTP / FTP Latitude	532613.7945N
LTP / FTP Longitude	0061650.2190W
LTP / FTP Ellipsoidal Height	127.8 m
FPAP Latitude	532605.3920N
Delta FPAP Latitude	-8.4025 seconds
FPAP Longitude	0061417.5990W
Delta FPAP Longitude	152.6200 seconds
Threshold Crossing Height	51
TCH Units Selector	0 (feet)
Glidepath Angle	3 °
Course Width	105 m
Length Offset	0 m
HAL	40 m
VAL	35 m
<b>Output Data</b>	
Data Block	10 17 04 09 05 CA 00 00 02 30 31 05 45 C8 EE 16 AA FD 4D FD FE 18 5B BE FF 58 A8 04 FE 01 2C 01 64 00 C8 AF 50 6E DE 8A
Calculated CRC Value	506EDE8A
<b>Required Additional Data</b>	
ICAO Code	EI
LTP/FTP Orthometric Height	71.6 m
SBAS EGNOS Channel	52341