

INSTRUMENT APPROACH CHART- ICAO

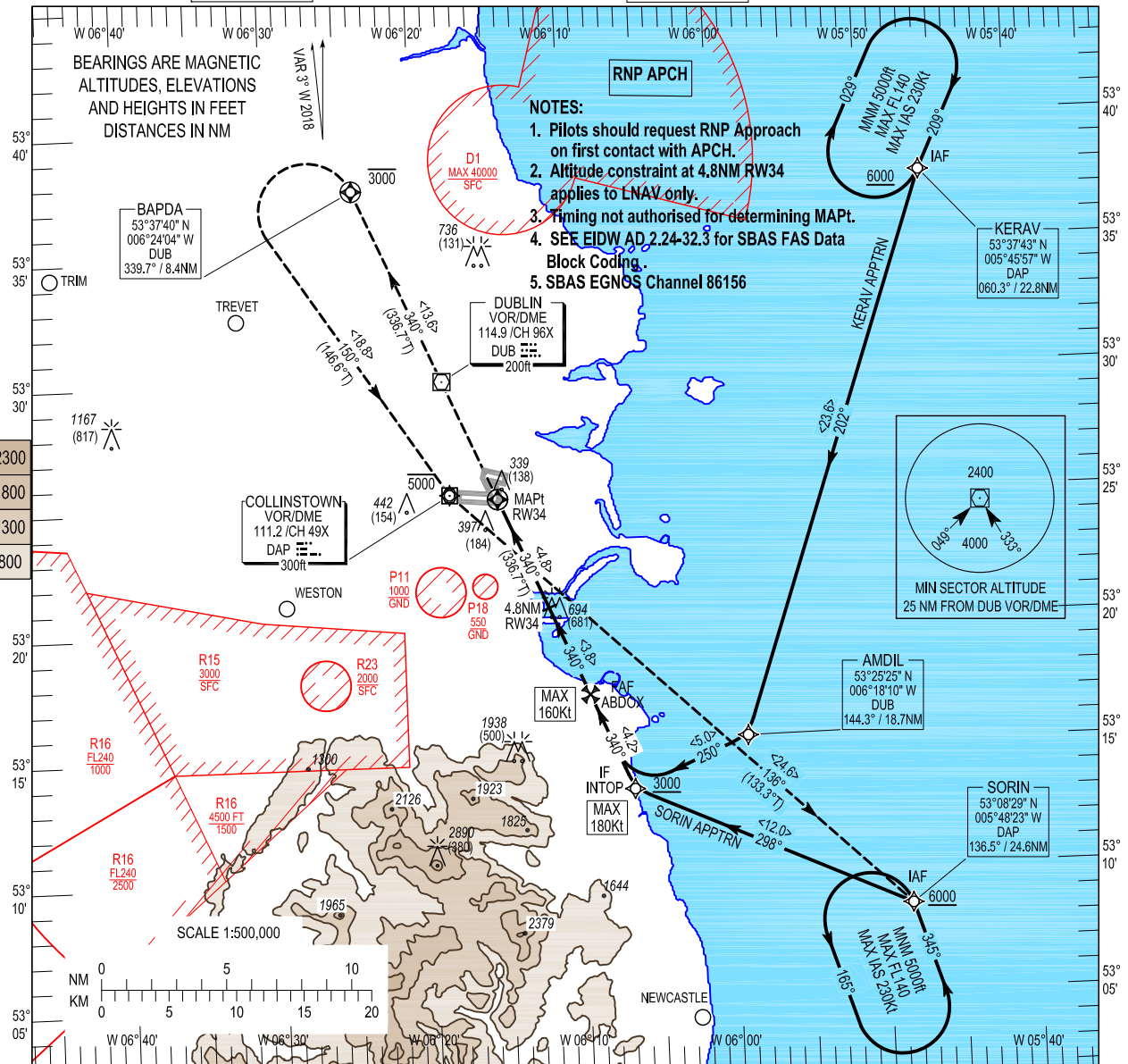
SBAS CH 86156 E34A

AERODROME ELEV 242 ft
HEIGHTS RELATED TO THR RWY 34 - ELEV 202 ft

TWR 118.600
FINALS 119.930
GND 121.800
ATIS 124.530
APP 121.100

CONSULT NOTAM FOR LATEST INFORMATION

DUBLIN/DUBLIN RNP RWY 34
(ACFT CAT A, B, C, D)
MINM TEMP -10°C (BARO VNAV)
MAX TEMP 30°C (BARO VNAV)

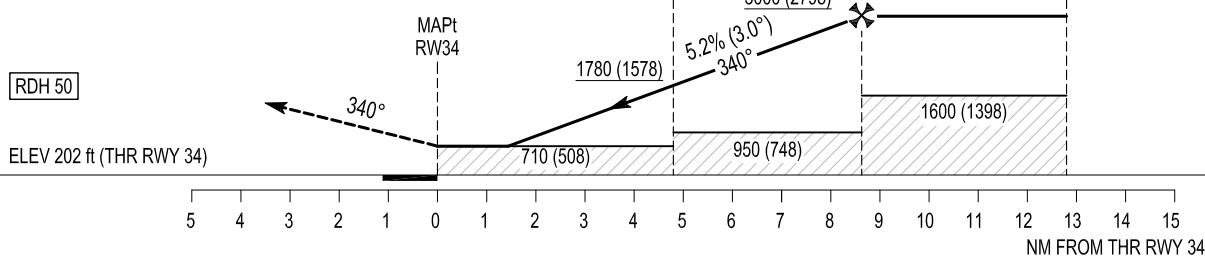


- NOTES:**
1. Pilots should request RNP Approach on first contact with APCH.
 2. Altitude constraint at 4.8NM RW34 applies to LNAV only.
 3. Timing not authorised for determining MAPt.
 4. SEE EIDW AD 2.24-32.3 for SBAS FAS Data Block Coding.
 5. SBAS EGNOS Channel 86156

Change: DUB altitude, SORIN Database Inbound Magnetic Track and Database tables for SORIN & KERAV.

MISSED APPROACH:
Climb extended centreline to BAPDA not above 3000ft, turn left to DAP DVOR climbing 5000ft, then to SORIN hold, or as instructed by ATC.

TRANSITION ALTITUDE 5000 ft



OCA (H)	A	B	C	D	Recommended Profile on Final Approach							
					DIST RW34	8.0	7.0	6.0	5.0	4.0	3.0	2.0
LPV	657 (455)	667 (465)	677 (475)	687 (485)	8.0	7.0	6.0	5.0	4.0	3.0	2.0	1.0
LNAV	710 (508)				2800 (2598)	2480 (2278)	2160 (1958)	1845 (1643)	1525 (1323)	1205 (1003)	890 (688)	570 (368)
LNAV / VNAV	540 (338)	550 (348)	570 (368)	690 (488)	Descent Rate 5.2%, (3°), 318 ft/NM							
VISUAL MANOEUVRING (These heights are AAL)	830 (588)		1100 (858)									80
					ft / min	425	530	635	745	850		

DUBLIN RNAV (GNSS) RWY 34 VIA KERAV

Navigation Performance	Path Terminator	WPT Name	Latitude (N) / Longitude (W)	Fly-By or Fly-Over	Distance (NM)	True Track / Magnetic Track	Upper Limit/ Lower Limit	Speed Limit (kts)	VPA / TCH	Remarks
RNP APCH	IF	KERAV	533742.7 / 0054557.3	Fly-By	-	-	+ 6000	230	-	IAF
RNP APCH	TF	AMDIL	531525.3 / 0055853.4	Fly-By	23.6	199.2 / 202	-	-	-	-
RNP APCH	TF	INTOP	531327.4 / 0060632.4	Fly-By	5.0	246.9 / 250	+ 3000	180	-	IF
RNP APCH	TF	ABDOX	531716.9 / 0060916.8	Fly-By	4.2	336.8 / 340	@ 3000	160	-	FAF
RNP APCH	TF	RWY34	532511.7 / 0061458.5	Fly-Over	8.6	336.7 / 340	-	-	3.00 / 50	MAPt
RNP APCH	CF	BAPDA	533740.0 / 0062403.7	Fly-Over	13.6	336.6 / 340	- 3000	-	-	-
RNP APCH	CF	DAP	532525.2 / 0061810.3	Fly-By	18.8	146.6 / 150	- 5000	-	-	L
RNP APCH	TF	SORIN	530829.3 / 0054822.5	Fly-By	24.6	133.3 / 136	@ 5000	230	-	-

DUBLIN RNAV (GNSS) RWY 34 VIA SORIN

Navigation Performance	Path Terminator	WPT Name	Latitude (N) / Longitude (W)	Fly-By or Fly-Over	Distance (NM)	True Track / Magnetic Track	Upper Limit/ Lower Limit	Speed Limit (kts)	VPA / TCH	Remarks
RNP APCH	IF	SORIN	530829.3 / 0054822.5	Fly-By	-	-	+ 6000	230	-	IAF
RNP APCH	TF	INTOP	531327.4 / 0060632.4	Fly-By	12.0	294.6 / 298	+ 3000	180	-	IF
RNP APCH	TF	ABDOX	531716.9 / 0060916.8	Fly-By	4.2	336.8 / 340	@ 3000	160	-	FAF
RNP APCH	TF	RWY34	532511.7 / 0061458.5	Fly-Over	8.6	336.7 / 340	-	-	3.00 / 50	MAPt
RNP APCH	CF	BAPDA	533740.0 / 0062403.7	Fly-Over	13.6	336.6 / 340	- 3000	-	-	-
RNP APCH	CF	DAP	532525.2 / 0061810.3	Fly-By	18.8	146.6 / 150	- 5000	-	-	L
RNP APCH	TF	SORIN	530829.3 / 0054822.5	Fly-By	24.6	133.3 / 136	@ 5000	230	-	-

Holding Identification - KERAV

Holding Fix	Latitude (N) / Longitude (W)	Inbound True Track (degrees)	Inbound Magnetic Track (degrees)	Direction of Turn	Maximum Indicated Airspeed (kts)	Maximum/ Minimum Holding Level / Altitude (FL/ft)	Timing outbound (Min)
KERAV	533742.7 / 0054557.3	205.5	209	R	230	FL140 / 5000	1

Holding Identification - SORIN

Holding Fix	Latitude (N) / Longitude (W)	Inbound True Track (degrees)	Inbound Magnetic Track (degrees)	Direction of Turn	Maximum Indicated Airspeed (kts)	Maximum/ Minimum Holding Level / Altitude (FL/ft)	Timing outbound (Min)
SORIN	530829.3 / 0054822.5	342.3	345	L	230	FL140 / 5000	1

SBAS FAS Data Block Coding Data
Dublin RNP RWY 34

Input Data	
Parameters	Values
Operation Type	0
SBAS Provider	1
Airport Identifier	EIDW
Runway	34
Runway Direction	0
Approach Performance Designator	0
Route Indicator	
Reference Path Data Selector	0
Reference Path Identifier	E34A
LTP/FTP Latitude	532511.6625N
LTP/FTP Longitude	0061458.5430W
LTP/FTP Ellipsoidal Height (metres)	117.9
FPAP Latitude	532613.1570N
Delta FPAP Latitude (seconds)	61.4945
FPAP Longitude	0061543.1210W
Delta FPAP Longitude (seconds)	-44.5780
Threshold Crossing Height	50.0
TCH Units Selector	0
Glidepath Angle (degrees)	3.00
Course Width (metres)	124.5
Length Offset (metres)	0
HAL (metres)	40.0
VAL (metres)	50.0

Output Data	
Data Block	10 17 04 09 05 22 00 00 01 34 33 05 DD E2 EC 16 22 66 51 FD 9B 18 6D E0 01 BC A3 FE F4 01 2C 01 B2 00 C8 FA EF 29 E1 45
Calculated CRC Value	EF29E145

Required Additional Data (not CRC wrapped)	
Parameters	Values
ICAO Code	EI
LTP/FTP Orthometric Height (metres)	61.54
FPAP Orthometric Height (metres)	66.17
SBAS EGNOS Channel	86156