

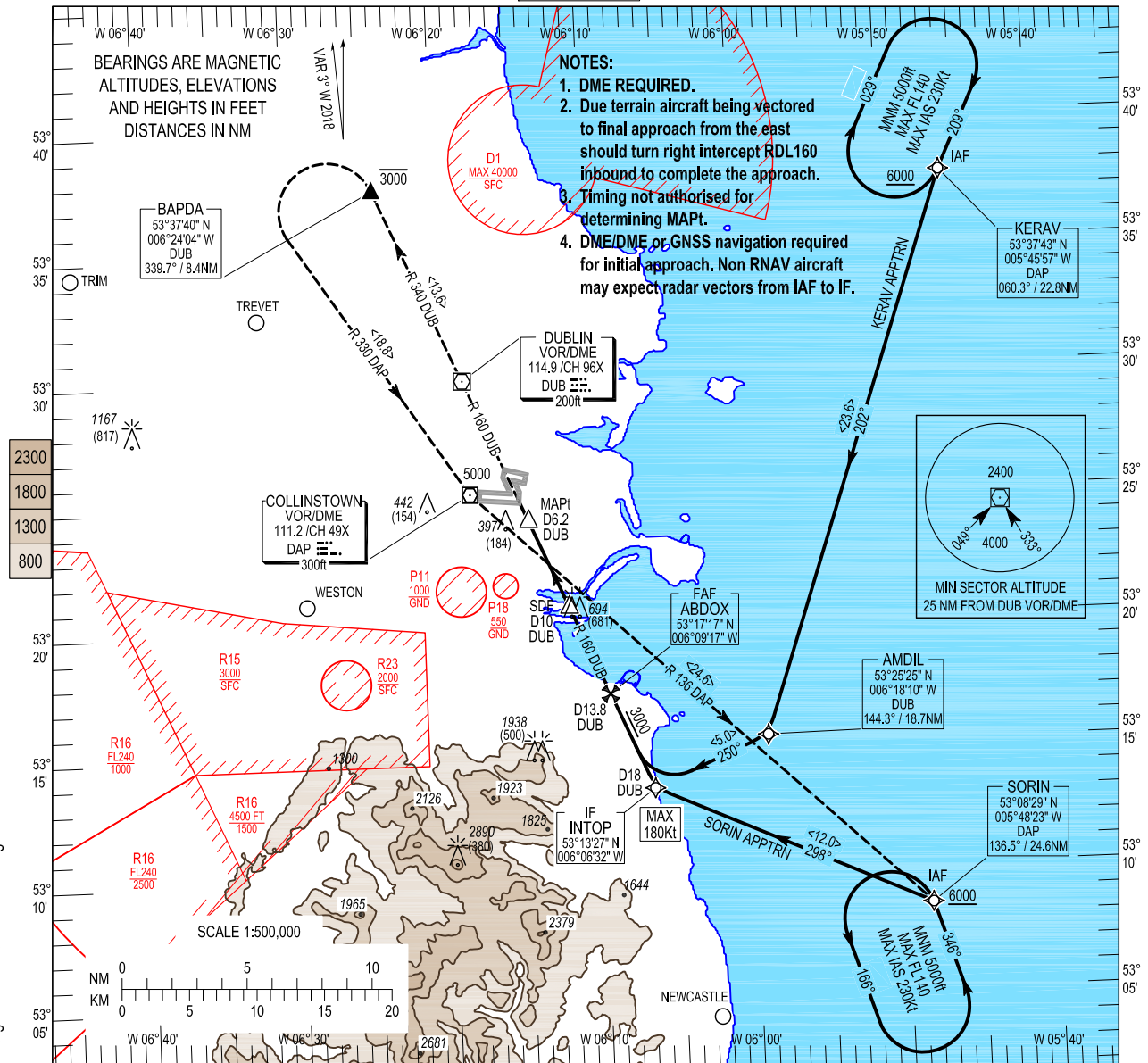
INSTRUMENT
APPROACH
CHART- ICAO

AERODROME ELEV 242 ft
HEIGHTS RELATED TO
THR RWY 34 - ELEV 202 ft

TWR 118.600
FINALS 119.930
GND 121.800
ATIS 124.530
APP 121.100

CONSULT NOTAM
FOR LATEST
INFORMATION

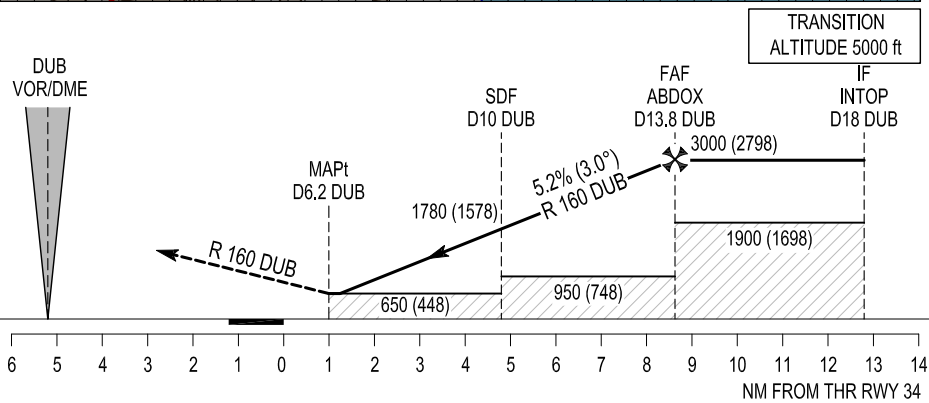
DUBLIN/DUBLIN
VOR RWY 34
(ACFT CAT A, B, C, D)



Change: KERAV & SORIN Holding Tables.

MISSED APPROACH:
Climb extended centreline to BAPDA not above 3000ft, turn left join RDL 330 to DAP DVOR climbing 5000ft, then to SORIN hold, or as instructed by ATC.

DUB DME READS D5.2 AT RWY 34 THR ELEV 202 ft (THR RWY 34)



KERAV INITIAL APP CAT A/B/C/D VOR RWY34

Navigation Performance	Path Terminator	WPT Name	Latitude (N) / Longitude (W)	Fly-By or Fly-Over	Distance (NM)	True Track / Magnetic Track	Upper Limit/Lower Limit	Speed Limit (kts)	Remarks
RNAV1	IF	KERAV	533742.7 / 0054557.3	Fly-By	-	-	-	-	-
RNAV1	TF	AMDIL	531525.3 / 0055853.4	Fly-By	23.6	199.2 / 202	-	-	-
RNAV1	TF	INTOP	531327.4 / 0060632.4	Fly-By	5.0	246.9 / 250	+ 3000	180	-

SORIN INITIAL APP CAT A/B/C/D VOR RWY34

Navigation Performance	Path Terminator	WPT Name	Latitude (N) / Longitude (W)	Fly-By or Fly-Over	Distance (NM)	True Track / Magnetic Track	Upper Limit/Lower Limit	Speed Limit (kts)	Remarks
RNAV1	IF	SORIN	530829.3 / 0054822.5	Fly-By	-	-	-	-	-
RNAV1	TF	INTOP	531327.4 / 0060632.4	Fly-By	12.0	294.6 / 298	+ 3000	180	-

RWY 34 VOR Approach

Descent Angle:	3.00°						
Fix	IF (INTOP)	FAF (ABDOX)	SDF	MAPt	BAPDA (MATE)	DAP	SORIN
Fix Coordinates	531327.4N 0060632.4W	531716.9N 0060916.8W	532047.7N 0061148.3W	532416.8N 0061418.9W	533740.0N 0062403.7W	532525.2N 0061810.3W	530829.3N 0054822.5W
Fix Formation Bearing °T	156.62 DUB	156.62 DUB	156.62 DUB	156.62 DUB	336.51 DUB	-	133.28 DAP
Fix Formation Distances	18.0 DUB	13.83 DUB	10.00 DUB	6.20 DUB	8.42 DUB	-	24.65 DAP

Holding Identification - KERAV

Holding Fix	Latitude (N) / Longitude (W)	Inbound True Track (degrees)	Inbound Magnetic Track (degrees)	Direction of Turn	Maximum Indicated Airspeed (kts)	Maximum/ Minimum Holding Level / Altitude (FL/ft)	Outbound Time (Min)
KERAV	533742.7 / 0054557.3	205.5	209	R	230	FL140 / 5000	1

Holding Identification - SORIN

Holding Fix	Latitude (N) / Longitude (W)	Inbound True Track (degrees)	Inbound Magnetic Track (degrees)	Direction of Turn	Maximum Indicated Airspeed (kts)	Maximum/ Minimum Holding Level / Altitude (FL/ft)	Outbound Time (Min)
SORIN	530829.3 / 0054822.5	342.3	346	L	230	FL140 / 5000	1

Note: Hold is contingency only & will only be used when directed by ATC.