

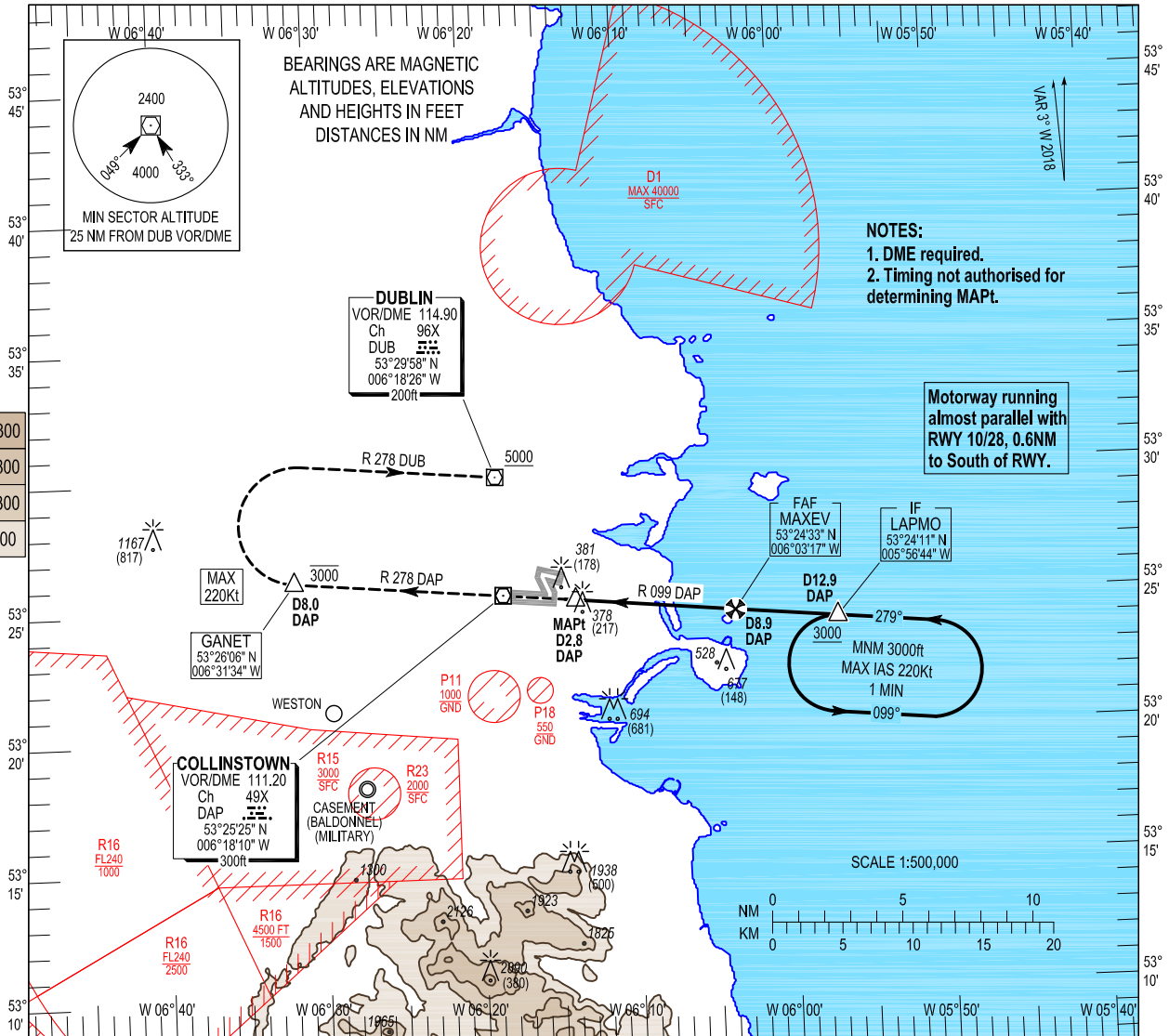
**INSTRUMENT APPROACH CHART- ICAO**

**AERODROME ELEV 242 ft**  
 HEIGHTS RELATED TO TEMPORARY DISPLACED THR RWY 28 - ELEV 208 ft

TWR 118.600  
 FINALS 119.930  
 GND 121.800  
 ATIS 124.530  
 APP 121.100

CONSULT NOTAM FOR LATEST INFORMATION

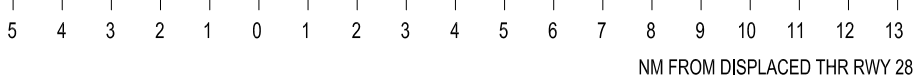
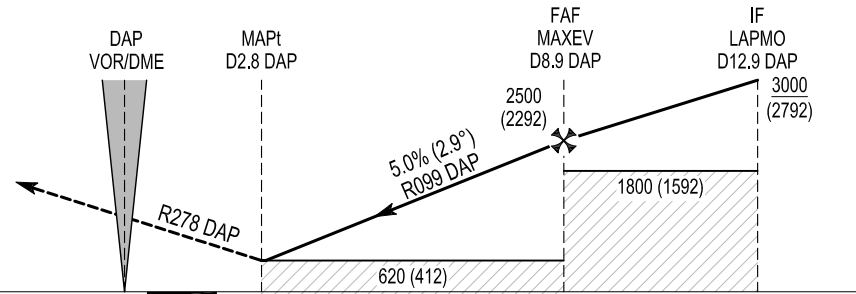
**DUBLIN/DUBLIN**  
 VOR T RWY 28  
 (ACFT CAT A, B, C, D)



Change: Visual Manoeuvring, Frequencies and MSA's.

**MISSED APPROACH:**  
 Climb straight ahead on RDL278 DAP DVOR not above 3000ft.  
 At D8.0 DAP DVOR (GANET) turn right (MAX IAS 220kts) join RDL278 DUB DVOR climbing to 5000ft and resume en-route flight. Or as instructed by ATC.  
 DAP DME READS D1.6 AT TEMPORARY DISPLACED THRESHOLD RWY 28  
 ELEV 208 ft (TEMPORARY DISPLACED THRESHOLD RWY 28)

**TRANSITION ALTITUDE 5000 ft**



OCA (H)	A	B	C	D	Recommended Profile on Final Approach									
					DME (DAP)	8.0	7.0	6.0	5.0	4.0	3.0			
Straight - in Approach	620 (412)													
					ALT (HGT)	2213 (2205)	1907 (1699)	1601 (1393)	1296 (1088)	990 (782)	685 (477)			
VISUAL MANOEUVRING (These heights are AAL)	830 (588)		1100 (858)		Descent Rate 5.0%, (2.9°), 305 ft/NM					80	100	120	140	160
										ft / min	405	505	605	710

RWY 28 VOR T Approach

Descent Angle:	2.9°					
Fix	IF (LAPMO)	FAF (MAXEV)	MAPt	GANET(MATP)	DUB	LAPMO
Fix Coordinates	532411.0N 0055644.1W	532433.5N 0060317.3W	532509.1N 0061331.7W	532606.5N 0063133.8W	532957.8N 0061825.6W	532411.0N 0055644.1W
Fix Formation Bearing °T	095.36 DAP	095.42 DAP	095.42 DAP	275.03 DAP	-	113.91DUB
Fix Formation Distances	12.88 DAP	8.94 DAP	2.79 DAP	8.04 DAP	-	14.20DUB

Holding Identification LAPMO

Holding Fix	Latitude (N) / Longitude (W)	Inbound True Track (degrees)	Inbound Magnetic Track (degrees)	Maximum Indicated Airspeed (kts)	Maximum/ Minimum Holding Level / Altitude (FL/ft)	Time (min)	Direction of Turn
LAPMO	532411.0/ 0055644.1	275.75	279	220	FL100/3000	1	L