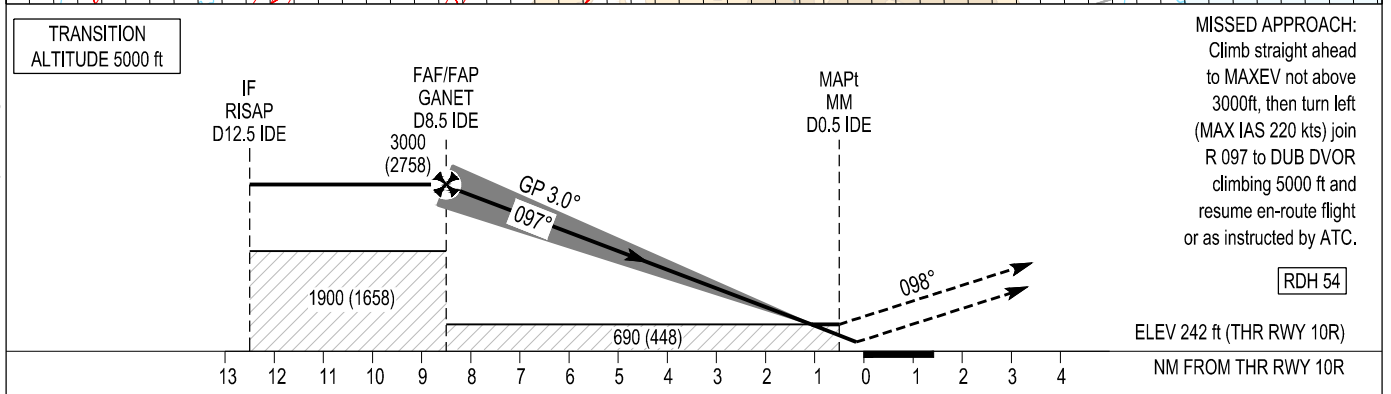
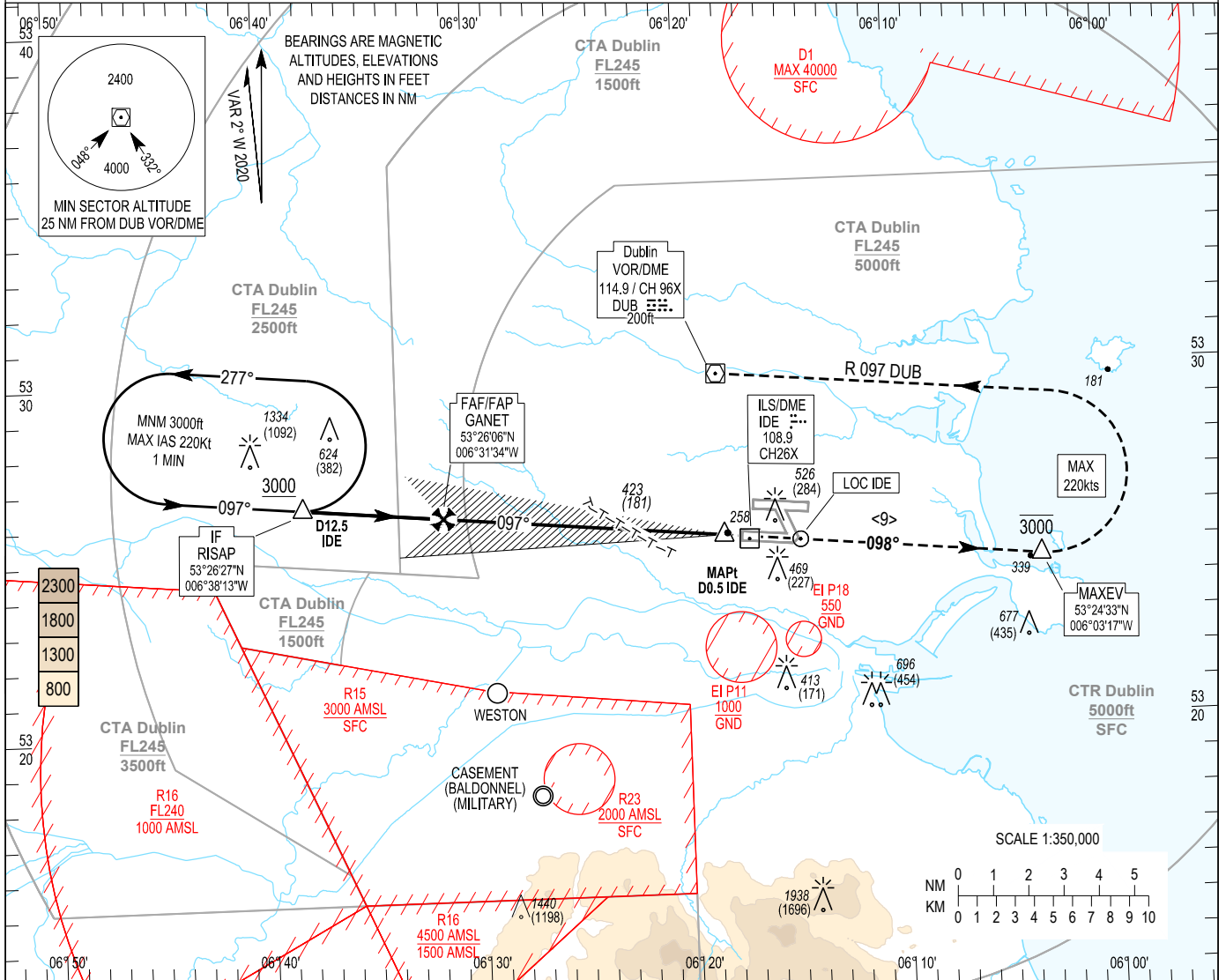


<p>INSTRUMENT APPROACH CHART- ICAO</p>	<p>AERODROME ELEV 242 ft HEIGHTS RELATED TO THR RWY 10R - ELEV 242 ft</p>	<table border="1" style="width:100%; border-collapse: collapse;"> <tr><td>TWR STH</td><td>118.600</td></tr> <tr><td>FINALS</td><td>119.930</td></tr> <tr><td>GND STH</td><td>121.800</td></tr> <tr><td>ATIS ARR</td><td>124.530</td></tr> <tr><td>APP</td><td>121.100</td></tr> </table>	TWR STH	118.600	FINALS	119.930	GND STH	121.800	ATIS ARR	124.530	APP	121.100	<p>DUBLIN/DUBLIN ILS CAT I and II or LOC RWY 10R (ACFT CAT A, B, C, D)</p>
TWR STH	118.600												
FINALS	119.930												
GND STH	121.800												
ATIS ARR	124.530												
APP	121.100												



MISSED APPROACH:
Climb straight ahead to MAXEV not above 3000ft, then turn left (MAX IAS 220 kts) join R 097 to DUB DVOR climbing 5000 ft and resume en-route flight or as instructed by ATC.

RDH 54

ELEV 242 ft (THR RWY 10R)
NM FROM THR RWY 10R

OCA (H)		A	B	C	D		
Straight-in Approach	CAT I	393 (151)	402 (160)	412 (170)	420 (178)		
	CAT II	305 (63)	317 (75)	330 (88)	344 (102)		
	LOC	690 (448)					
Visual Manoeuvring (Heights AAL)		830 (588)		1100 (858)			
NOTE:							
1. DME required or vectoring to final approach for ILS.							
2. Timing not authorized for determining MAPt.							
3. Motorway running almost parallel with RWY 10R/28L, 0.6NM to South of RWY.							
4. ILS/DME reads zero at RWY 10R THR.							
Recommended LOC only Profile on Final Approach							
DIST THR RWY 10R (NM)		7.0	6.0	5.0	4.0	3.0	2.0
ALT / HT (ft)		2525 (2283)	2205 (1963)	1890 (1648)	1570 (1328)	1250 (1008)	935 (693)
Ground Speed		kts		80	100	110	120
Descent rate gradient - 5.24% (3°) 318 ft/NM		ft / min		430	530	580	640
		140	160	180	200	220	240

CHANGE: MAG VAR, Chart Title, Chart Numbering and OCA(H). Runway Redesignation

Dublin ILS CAT I & II or LOC Approach RWY 10R

Descent Angle:	3.00°				
Fix	IF (D12.5 IDE - RISAP)	FAP/FAF (D8.5 IDE - GANET)	MAPt MM (D0.5 IDE)	TP (D8.1 IDE - MAXEV)	DUB
Fix Coordinates	532627.4N 0063813.2W	532606.5N 0063133.8W	532523.6N 0061816.8W	532433.5N 0060317.3W	532957.8N 0061825.6W
Fix Formation Bearing °T	275.28 IDE	275.28 IDE	275.28 IDE	120.79 DUB	-
Fix Formation Distances	12.50 IDE	8.50 IDE	0.53 IDE	8.08 IDE	-

Hold Identification

Holding Fix	Latitude (N) / Longitude (W)	Inbound True Track (degrees)	Inbound Mag Track (degrees)	Maximum Indicated Airspeed (kts)	Minimum Holding Altitude (ft)	Maximum Holding Level (FL)	Outbound time (min)	Direction of Turn
RISAP	532627.4 / 0063813.2	094.88	097	220	A3000	FL100	1	L