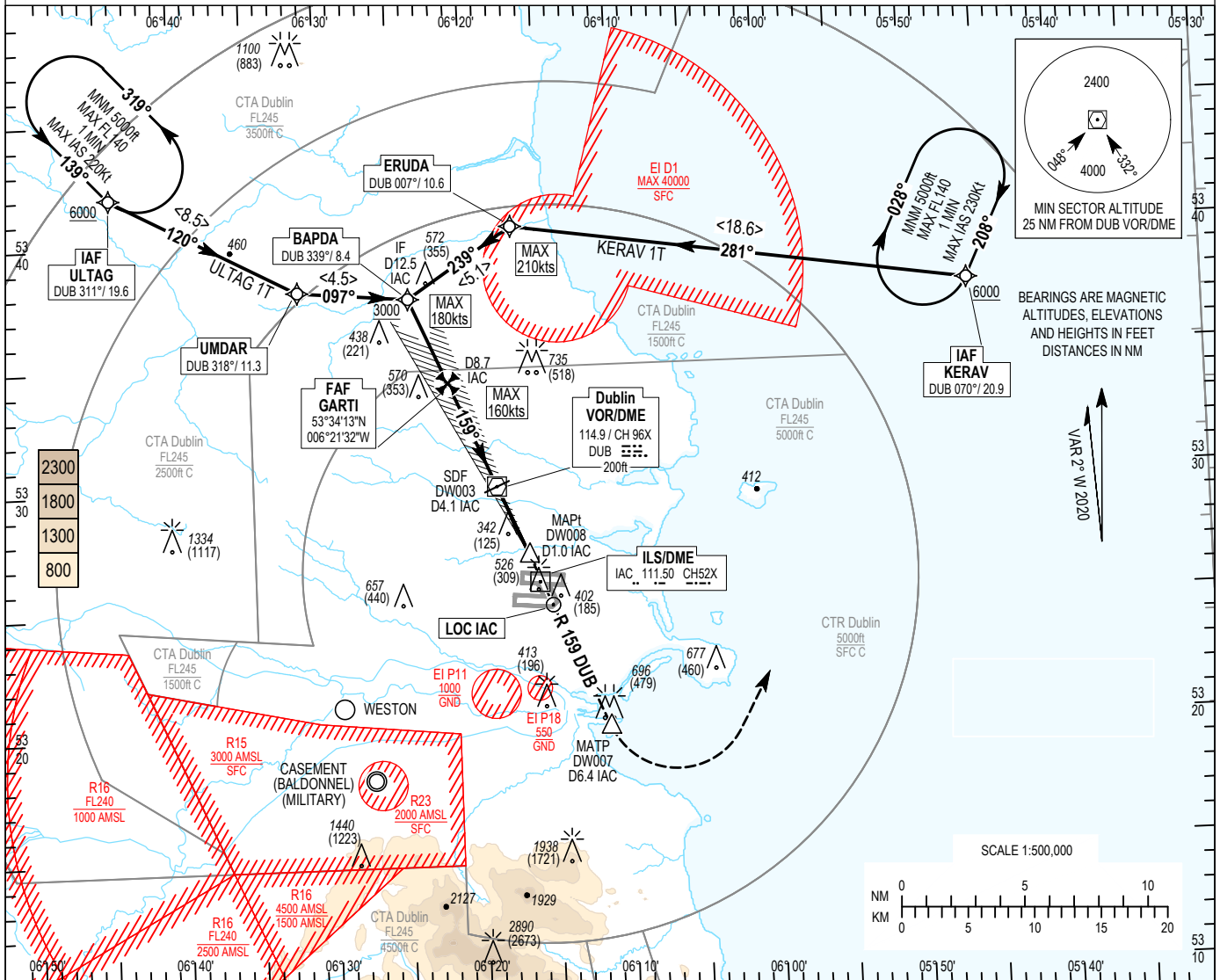


INSTRUMENT  
APPROACH  
CHART- ICAO

AERODROME ELEV 242 ft  
HEIGHTS RELATED TO  
THR RWY 16 - ELEV 217 ft

TWR	118.600
FINALS	119.930
GND	121.800
ATIS	124.530
APP	121.100

DUBLIN/DUBLIN  
ILS CAT I or LOC RWY 16  
(ACFT CAT A, B, C, D)



CHANGE: MAG VAR, OCA/H, Chart Numbering, Frequencies and Notes

08 OCT 2020

**KERAV 1T INITIAL APPROACH CAT A/B/C/D ILS RWY16**

Navigational performance	Path descriptor	WPT Name	Latitude (N) / Longitude (W)	Fly-By or Fly-Over	Distance (nm)	True track / Magnetic track	Upper limit / Lower limit	Speed limit (kts)	Remarks
RNAV 1	IF	KERAV	533742.7 / 0054557.3	Fly-By	-	-	- / FL060	-	IAF
RNAV 1	TF	ERUDA	534029.0 / 0061655.0	Fly-By	18.6	278.8 / 281	-	-	-
RNAV 1	TF	BAPDA	533740.0 / 0062403.7	Fly-By	5.1	236.5 / 239	- / A3000	180	IF

**ULTAG 1T INITIAL APPROACH CAT A/B/C/D ILS RWY16**

Navigational performance	Path descriptor	WPT Name	Latitude (N) / Longitude (W)	Fly-By or Fly-Over	Distance (nm)	True track / Magnetic track	Upper limit / Lower limit	Speed limit (kts)	Remarks
RNAV 1	IF	ULTAG	534201.0 / 0064417.2	Fly-By	-	-	- / FL060	-	IAF
RNAV 1	TF	UMDAR	533803.3 / 0063135.5	Fly-By	8.5	117.6 / 120	-	-	-
RNAV 1	TF	BAPDA	533740.0 / 0062403.7	Fly-By	4.5	094.9 / 097	- / A3000	180	IF

**RWY 16 ILS CAT I or LOC Approach**

Descent Angle:	3.00°				
Fix	IF BAPDA	FAF GARTI	SDF (DW003) (LOC)	MAPt (DW008) (LOC)	MATP (DW007)
Fix Coordinates	533740.0N 0062403.7W	533412.8N 0062132.1W	532957.7N 0061825.6W	532707.3N 0061622.2W	532003.5N 0061115.7W
Fix Formation Bearing °T	156.47 IAC	156.51 IAC	156.61 IAC	156.62 IAC	156.58 DUB
Fix Formation Distances	12.50 IAC	8.73 IAC	4.08 IAC	0.98 IAC	6.40 IAC

**Holding Identification Runway 16**

Holding Fix	Latitude (N) / Longitude (W)	Inbound True Track (degrees)	Inbound Magnetic Track (degrees)	Maximum Indicated Airspeed (kts)	Minimum/ Maximum Holding Level / Altitude (FL/ft)	Outbound Time (min)	Direction of Turn
KERAV	533742.7 / 0054557.3	205.5	208	230	A5000 / FL140	1	R
ULTAG	534201.0 / 0064417.2	136.6	139	220	A5000 / FL140	1	L