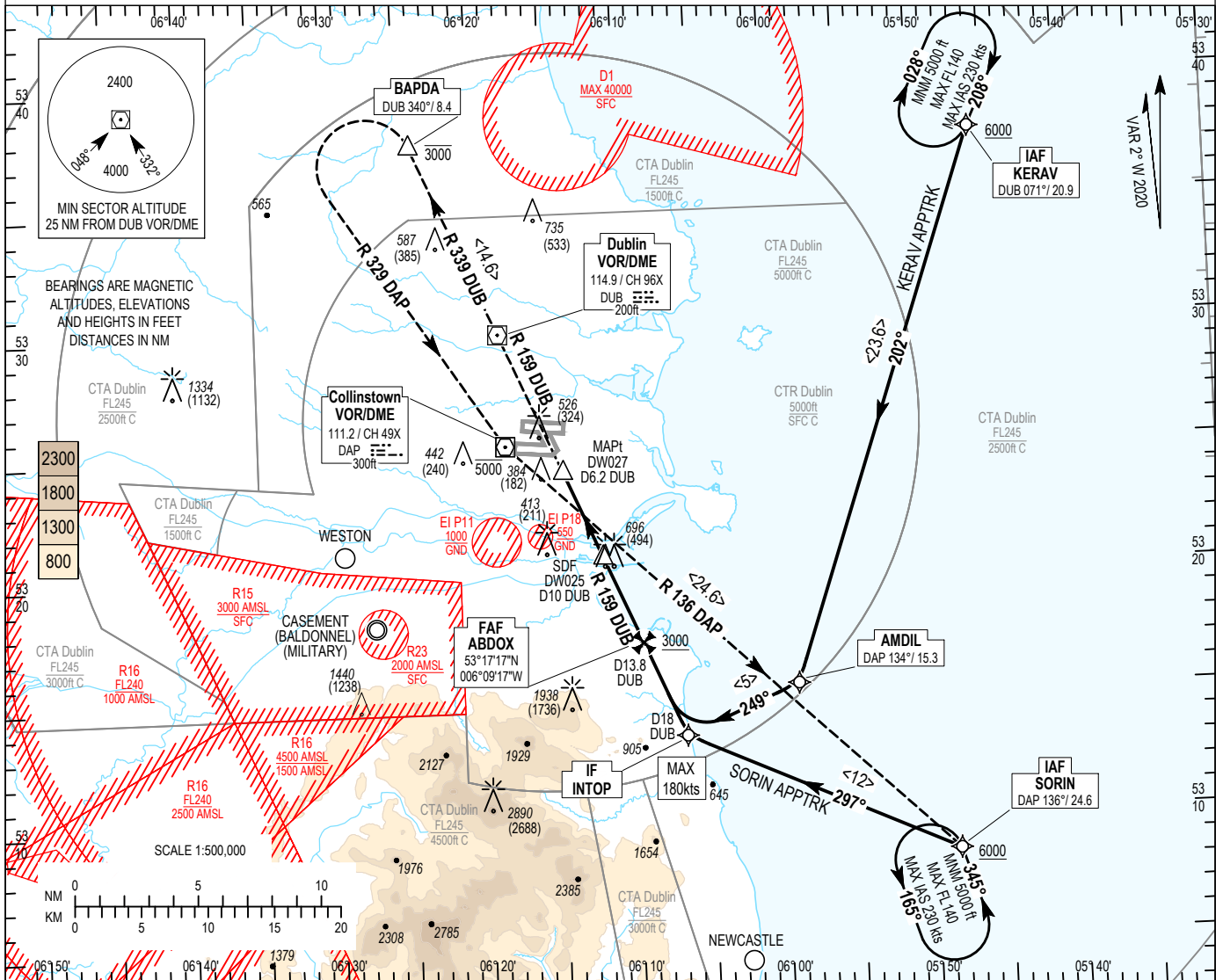


INSTRUMENT
APPROACH
CHART- ICAO

AERODROME ELEV 242 ft
HEIGHTS RELATED TO
THR RWY 34 - ELEV 202 ft

TWR	118.600
FINALS	119.930
GND	121.800
ATIS	124.530
APP	121.100

DUBLIN/DUBLIN
VOR RWY 34
(ACFT CAT A, B, C, D)



CHANGE: MAG VAR, Obstacles, Recommended Profile on Final approach, Missed Approach, Chart Numbering, Frequencies and Notes

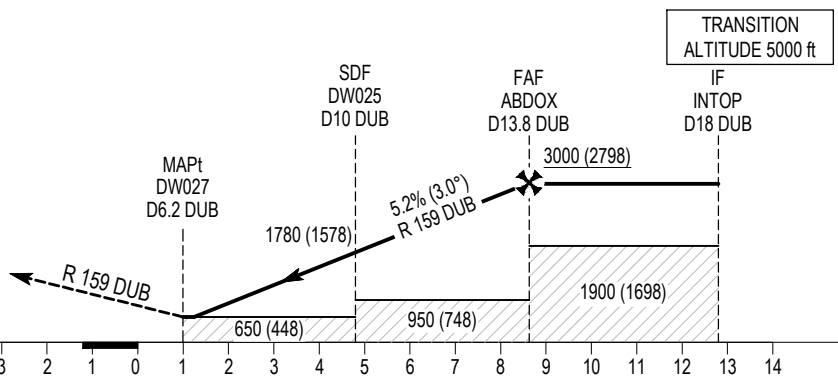
MISSED APPROACH:

Climb on RDL 159 DUB to DUB DVOR then RDL 339 DUB to BAPDA not above 3000ft. At BAPDA turn left to join RDL 329 to DAP DVOR climbing 5000ft, then to SORIN to hold or as instructed by ATC.

DUB DME READS D5.2 AT RWY 34 THR

ELEV 202 ft (THR RWY 34)
NM FROM THR RWY 34

DUB VOR/DME



OCA (H)	A	B	C	D
Straight-in Approach		650 (448)		
Visual Manoeuvring (Heights AAL)	830 (588)		1100 (858)	

NOTE:

- DME required.
- Due to terrain aircraft being vectored to final approach from the east should turn right to intercept RDL 160 inbound to complete the approach.
- Timing not authorised for determining MAPt.
- DME/DME or GNSS navigation required for initial approach.
- Non RNAV aircraft may expect radar vectors from IAF to IF.

Recommended Profile on Final Approach

DIST DME DUB (NM)	7	8	9	10	11	12	13
ALT / HT (ft)	820 (618)	1140 (938)	1460 (1258)	1780 (1578)	2100 (1898)	2420 (2218)	2730 (2528)
Ground Speed		80	100	110	120	140	160
Descent rate gradient - 5.2% (3.0°) 318 ft/NM		430	530	580	640	740	850

KERAV INITIAL APPROACH CAT A/B/C/D VOR RWY34

Navigational performance	Path descriptor	WPT Name	Latitude (N) / Longitude (W)	Fly-By or Fly-Over	Distance (nm)	True track / Magnetic track	Upper limit / Lower limit	Speed limit (kts)	Remarks
RNAV 1	IF	KERAV	533742.7 / 0054557.3	Fly-By	-	-	-	-	IAF
RNAV 1	TF	AMDIL	531525.3 / 0055853.4	Fly-By	23.6	199.2 / 202	-	-	-
RNAV 1	TF	INTOP	531327.4 / 0060632.4	Fly-By	5.0	246.9 / 249	- / A3000	180	IF

SORIN INITIAL APPROACH CAT A/B/C/D VOR RWY34

Navigational performance	Path descriptor	WPT Name	Latitude (N) / Longitude (W)	Fly-By or Fly-Over	Distance (nm)	True track / Magnetic track	Upper limit / Lower limit	Speed limit (kts)	Remarks
RNAV 1	IF	SORIN	530829.3 / 0054822.5	Fly-By	-	-	-	-	IAF
RNAV 1	TF	INTOP	531327.4 / 0060632.4	Fly-By	12.0	294.6 / 297	- / A3000	180	IF

RWY 34 VOR Approach

Descent Angle:	3.00°							
Fix	IF (INTOP)	FAF (ABDOX)	SDF (DW025)	MAPt (DW027)	DUB	BAPDA (MATF)	DAP	SORIN
Fix Coordinates	531327.4N 0060632.4W	531716.9N 0060916.8W	532047.7N 0061148.3W	532416.8N 0061418.9W	532957.8N 0061825.6W	533740.0N 0062403.7W	532525.2N 0061810.3W	530829.3N 0054822.5W
Fix Formation Bearing °T	156.62 DUB	156.62 DUB	156.62 DUB	156.62 DUB	-	336.51 DUB	-	133.28 DAP
Fix Formation Distances	18.0 DUB	13.83 DUB	10.00 DUB	6.20 DUB	-	8.42 DUB	-	24.65 DAP

Holding Identification - KERAV

Holding Fix	Latitude (N) / Longitude (W)	Inbound True Track (degrees)	Inbound Magnetic Track (degrees)	Maximum Indicated Airspeed (kts)	Minimum/ Maximum Holding Level / Altitude (FL/ft)	Outbound Time (min)	Direction of Turn
KERAV	533742.7 / 0054557.3	205.5	208	230	A5000 / FL140	1	R

Holding Identification - SORIN

Holding Fix	Latitude (N) / Longitude (W)	Inbound True Track (degrees)	Inbound Magnetic Track (degrees)	Maximum Indicated Airspeed (kts)	Minimum/ Maximum Holding Level / Altitude (FL/ft)	Outbound Time (min)	Direction of Turn
SORIN	530829.3 / 0054822.5	342.3	345	230	A5000 / FL140	1	L

Note: Holds are for contingency use only and will only be used when directed by ATC.