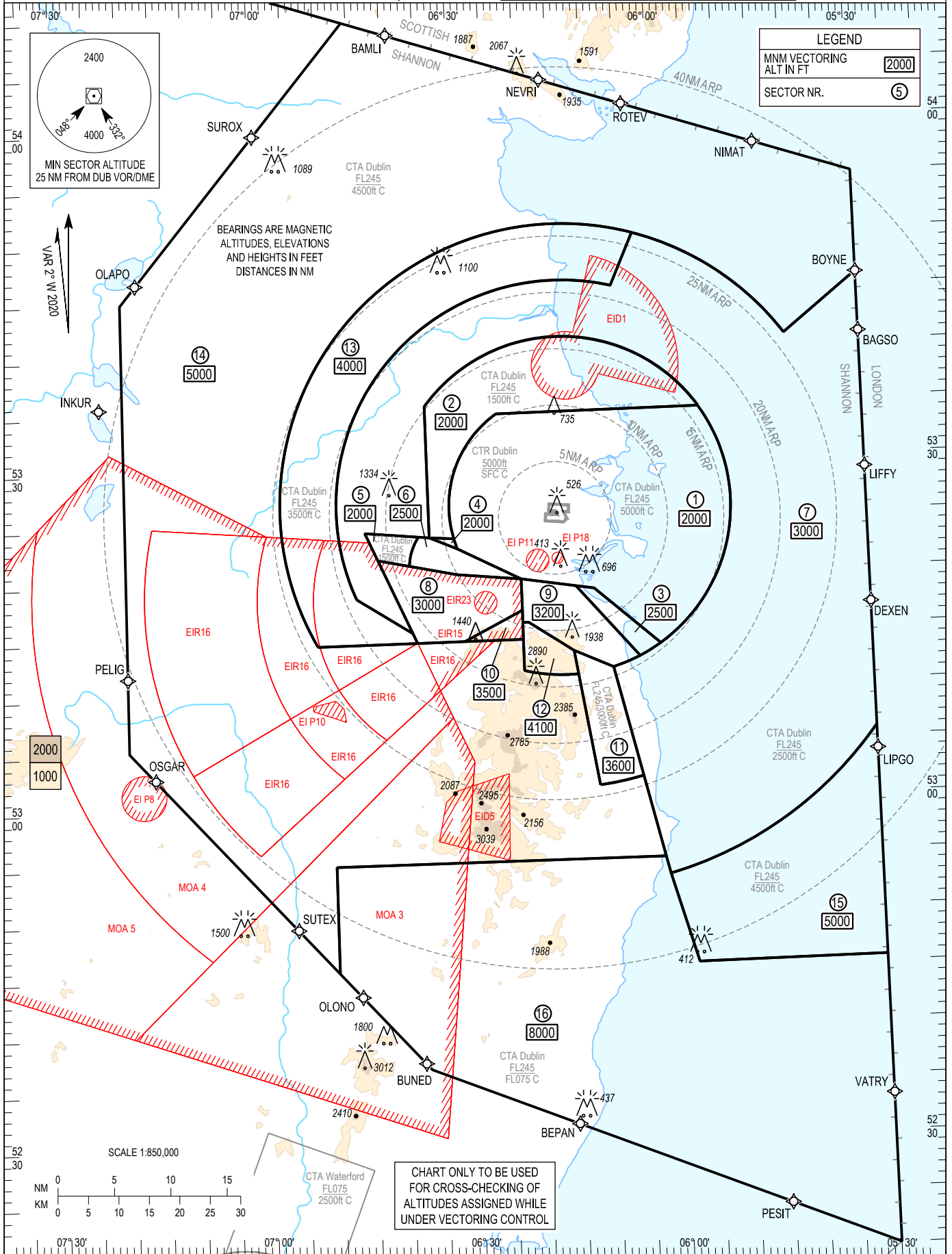


ATC SURVEILLANCE MINIMUM
ALTITUDE CHART - ICAO

AERODROME ELEV 242ft
TRANS ALT 5000ft
TRANS LEVEL by ATC

Dublin ATIS	124.530	Dublin APP	121.100
Dublin TWR	118.600	Dublin GND	121.800
ACC Lower North	132.580	ACC Upper North	129.180
ACC Lower South	120.755	ACC Upper South	135.655

DUBLIN / DUBLIN



LEGEND	
MNM VECTORING ALT IN FT	2000
SECTOR NR.	⑤

BEARINGS ARE MAGNETIC
ALTITUDES, ELEVATIONS
AND HEIGHTS IN FEET
DISTANCES IN NM

CHART ONLY TO BE USED
FOR CROSS-CHECKING OF
ALTITUDES ASSIGNED WHILE
UNDER VECTORING CONTROL

NOTES:

1. ALTITUDE TEMPERATURE CORRECTION to +1° C taken into account in determining minimums.
2. Max IAS 250 KT below FL100.
3. COMMUNICATION FAILURE: In accordance with procedures described in AIP Ireland EIDW AD 2.22, paragraph 5.3 Communications failure procedures for arriving aircraft.

CHANGE: MAG VAR, Frequencies, Obstacles amended, AGL & AMSL values amended, North RWY added, Chart numbering.

ATC Surveillance Minimum Altitude Coordinates

Sector 1. MNM ALT **A2000**

53°34'41"N 006°24'22"W, arc 10 NM radius centre
53°26'21"N 006°15'08"W, 53°22'52"N 006°30'48"W,
53°20'00"N 006°21'30"W, 53°18'57"N 006°10'47"W,
53°13'54"N 006°01'14"W, arc 15 NM radius centre
53°26'21"N 006°15'08"W, 53°34'45"N 005°54'20"W,
53°34'41"N 006°24'22"W

Sector 2. MNM ALT **A2000**

53°34'41"N 006°24'22"W, arc 10 NM radius centre
53°26'21"N 006°15'08"W, 53°23'46"N 006°31'16"W,
53°23'55"N 006°34'55"W, 53°35'31"N 006°35'00"W,
arc 15 NM radius centre 53°26'21"N 006°15'08"W,
53°34'45"N 005°54'20"W, 53°34'41"N 006°24'22"W

Sector 3. MNM ALT **A2500**

53°13'54"N 006°01'14"W, 53°18'57"N 006°10'47"W
53°19'13"N 006°13'27"W, 53°12'50"N 006°04'22"W
arc 15 NM radius centre 53°26'21"N 006°15'08"W,
53°13'54"N, 006°01'14"W

Sector 4. MNM ALT **A2000**

53°22'52"N 006°30'48"W, 53°23'55"N 006°34'55"W,
53°23'46"N 006°31'16"W, arc 10 NM radius centre
53°26'21"N 006°15'08"W, 53°22'52"N 006°30'48"W

Sector 5. MNM ALT **A2000**

53°24'01"N 006°36'30"W,
arc 5 NM radius centre 53°21'10"N 006°29'38"W,
53°21'27"N 006°37'58"W, 53°22'02"N 006°42'37"W,
53°24'28"N 006°44'26"W, 53°24'01"N 006°36'30"W

Sector 6. MNM ALT **A2500**

53°23'55"N 006°34'55"W, 53°22'52"N 006°30'48"W,
53°20'00"N 006°21'30"W, 53°20'06"N 006°23'12"W,
53°20'34"N 006°30'56"W, 53°21'27"N 006°37'58"W,
arc 5 NM radius centre 53°21'10"N 006°29'38"W,
53°24'01"N 006°36'30"W, 53°23'55"N 006°34'55"W

Sector 7. MNM ALT **A3000**

53°18'38"N 006°45'56"W, 53°15'29"N 006°37'46"W,
53°24'28"N 006°44'26"W, 53°23'55"N 006°34'55"W,
53°35'31"N 006°35'00"W, arc 15 NM radius centre
53°26'21"N 006°15'08"W, 53°11'56"N 006°08'21"W,
52°53'28"N 006°01'08"W, arc 34 NM radius centre
53°26'21"N 006°15'08"W, 53°05'51"N 005°30'00"W,
53°46'02"N 005°30'00"W, 53°40'53"N 005°41'04"W,
arc 25 NM radius centre 53°26'21"N 006°15'08"W,
53°50'16"N 006°03'06"W, 53°45'40"N 006°06'36"W,
arc 20 NM radius centre 53°26'21"N 006°15'08"W,
53°18'38"N 006°45'56"W

Sector 8. MNM ALT **A3000**

53°22'02"N 006°42'37"W, 53°14'36"N 006°37'07"W,
53°14'38"N 006°30'07"W, 53°17'13"N 006°21'30"W,
53°20'00"N 006°21'30"W, 53°20'34"N 006°30'56"W,
53°22'02"N 006°42'37"W

Sector 9. MNM ALT **A3200**

53°11'56"N, 006°08'22"W,
arc 15 NM radius centre 53°26'21"N 006°15'08"W,
53°12'50"N 006°04'22"W, 53°19'13"N 006°13'27"W,
53°20'00"N, 006°21'30"W, 53°17'13"N 006°21'30"W,
53°16'08"N 006°21'30"W, 53°16'08"N 006°20'36"W,
53°13'30"N 006°14'05"W, 53°11'56"N 006°08'22"W

Sector 10. MNM ALT **A3500**

53°17'13"N 006°21'30"W, 53°14'38"N 006°30'07"W,
53°14'39"N 006°21'30"W, 53°17'13"N 006°21'30"W

Sector 11. MNM ALT **A3600**

53°01'31"N 006°10'57"W,
arc 25 NM radius centre 53°26'21"N 006°15'08"W,
53°02'13"N 006°04'32"W, 53°11'56"N 006°08'21"W,
53°13'30"N 006°14'05"W, 53°01'31"N 006°10'57"W

Sector 12. MNM ALT **A4100**

53°11'24"N 006°13'32"W, 53°13'30"N 006°14'05"W,
53°16'08"N 006°20'36"W, 53°16'08"N 006°21'30"W,
53°11'52"N 006°21'30"W, arc 15 NM radius centre
53°26'21"N 006°15'08"W, 53°11'24"N 006°13'32"W

Sector 13. MNM ALT **A4000**

53°18'38"N 006°45'56"W, 53°15'29"N 006°37'46"W,
53°14'36"N 006°37'07"W, 53°14'32"N 006°51'52"W,
arc 25 NM radius centre 53°26'21"N 006°15'08"W,
53°50'16"N 006°03'06"W, 53°45'40"N 006°06'36"W,
arc 20 NM radius centre 53°26'21"N 006°15'08"W,
53°18'38"N 006°45'56"W

Sector 14. MNM ALT **A5000**

54°09'42"N 006°45'38"W, 53°55'00"N 005°30'00"W,
53°46'02"N 005°30'00"W, 53°40'53"N 005°41'04"W,
arc 25 NM radius centre 53°26'21"N 006°15'08"W,
53°14'32"N 006°51'52"W, 53°14'39"N 006°21'30"W,
53°11'52"N 006°21'30"W,
arc 15 NM radius centre 53°26'21"N 006°15'08"W,
53°11'24"N 006°13'32"W, 53°01'31"N 006°10'57"W,
arc 25 NM radius centre 53°26'21"N 006°15'08"W,
53°02'13"N 006°04'32"W, 52°55'00"N 006°01'44"W,
52°55'00"N 006°50'00"W, 52°45'34"N 006°50'00"W,
53°05'26"N 007°20'00"W, 53°45'07"N 007°20'00"W,
54°06'37"N 006°50'00"W, 54°09'42"N 006°45'38"W

Sector 15. MNM ALT **A5000**

53°05'51"N 005°30'00"W, 52°45'34"N 005°30'00"W,
52°45'34"N 005°57'27"W, 52°53'28"N 006°01'08"W,
arc 34 NM radius centre 53°26'21"N 006°15'08"W,
53°05'51"N 005°30'00"W

Sector 16. MNM ALT **A8000**

52°55'00"N 006°50'00"W, 52°55'00"N 006°01'44"W,
52°53'29"N 006°01'08"W, 52°45'34"N 005°57'27"W,
52°45'34"N 005°30'00"W, 52°20'00"N 005°30'00"W,
52°36'50"N 006°37'01"W, 52°45'34"N 006°50'00"W,
52°55'00"N 006°50'00"W