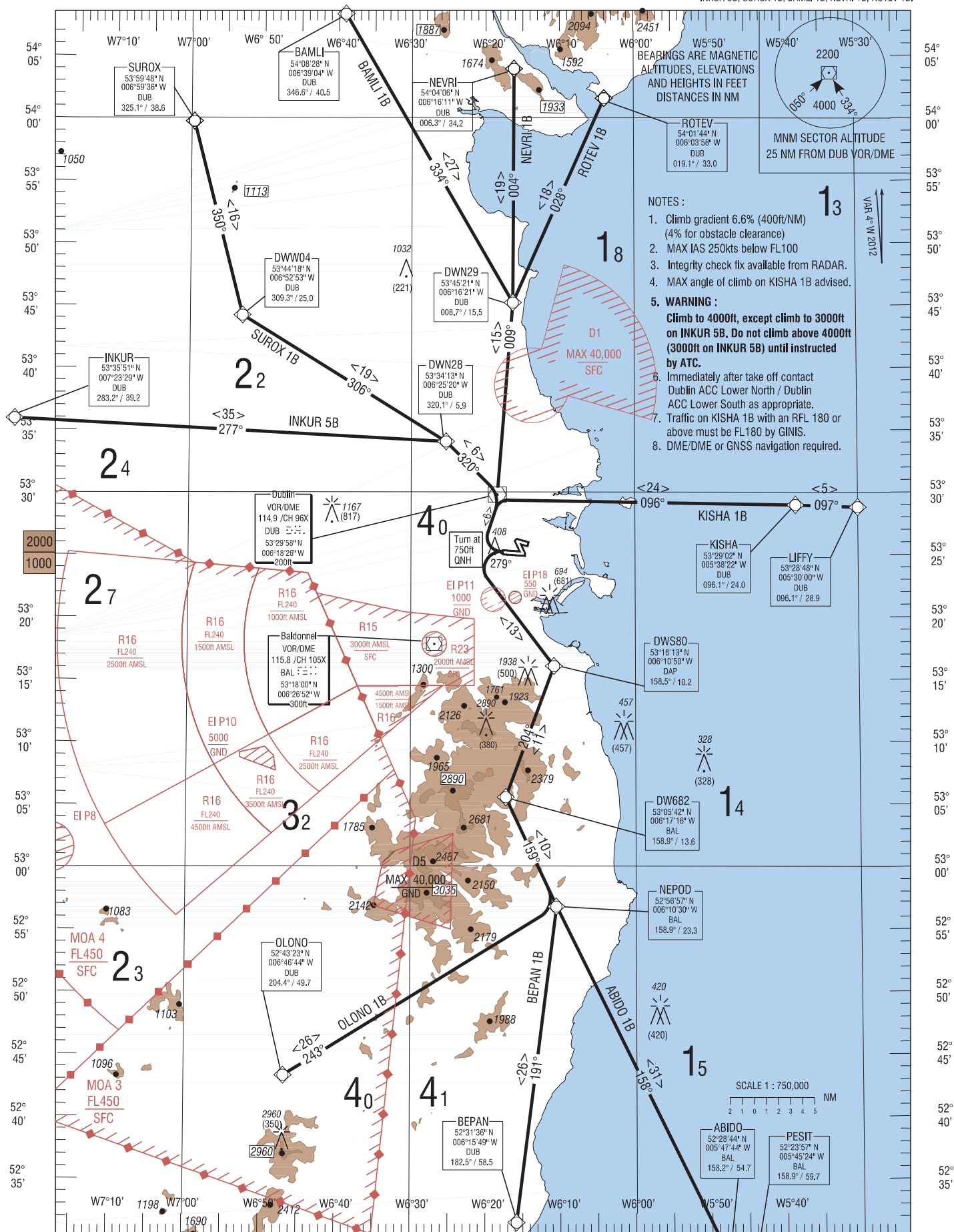


RNAV STANDARD DEPARTURE CHART
INSTRUMENT (SID) - ICAOTRANS ALT 5000ft
TRANS LEVEL by ATCATIS 124.525
TWR 118.600
DUBLIN ACC LOWER NORTH 132.575
DUBLIN ACC LOWER SOUTH 126.250DUBLIN RWY 28
CAT A, BKISHA 1B, ABIDO 1B, BEPAN 1B, OLONO 1B,
INKUR 5B, SUROX 1B, BAMLI 1B, NEVRI 1B, ROTEV 1B.CHANGE: New waypoints DWN29, DWW04, DWS80, DW682, KISHA, ABIDO. Updated MAG VAR, bearings & distances. General revision. Revised designators.
Revised notes. Frequencies revised. New SIDs KISHA 1B, ABIDO 1B, BEPAN 1B, OLONO 1B, SUROX 1B, BAMLI 1B, NEVRI 1B, ROTEV 1B.

ABIDO1B CAT A/B SID RWY28

Navigation Performance	Path Terminator	WPT Name	Latitude (N), Longitude (W)	Fly-By or Fly-Over	Distance (NM)	True Track / Magnetic Track	Upper Limit/ Lower Limit	Speed Limit (kts)	Remarks
RNAV1	CA	RWY28	-	-	-	275.4 / 279	A750+	-	-
RNAV1	DF	DWS80	531613.0 / 0061050.0	Fly-By	-	-	-	-	L
RNAV1	TF	DW682	530541.9 / 0061715.9	Fly-By	11.2	200.2 / 204	-	-	-
RNAV1	TF	NEPOD	525657.2 / 0061029.8	Fly-By	9.7	154.9 / 159	-	-	-
RNAV1	TF	ABIDO	522843.7 / 0054744.1	Fly-By	31.5	153.8 / 158	-	-	-
RNAV1	TF	PESIT	522356.6 / 0054524.0	Fly-By	5.0	163.4 / 168	-	-	-

BAMLI1B CAT A/B SID RWY28

Navigation Performance	Path Terminator	WPT Name	Latitude (N), Longitude (W)	Fly-By or Fly-Over	Distance (NM)	True Track / Magnetic Track	Upper Limit/ Lower Limit	Speed Limit (kts)	Remarks
RNAV1	CA	RWY28	-	-	-	275.4 / 279	A750+	-	-
RNAV1	DF	DUB	532957.8 / 0061825.6	Fly-By	-	-	-	-	R
RNAV1	TF	DWN29	534521.0 / 0061621.0	Fly-By	15.5	004.6 / 009	-	-	-
RNAV1	TF	BAMLI	540828.5 / 0063904.0	Fly-By	26.8	330.1 / 334	-	-	-

BEPAN1B CAT A/B SID RWY28

Navigation Performance	Path Terminator	WPT Name	Latitude (N), Longitude (W)	Fly-By or Fly-Over	Distance (NM)	True Track / Magnetic Track	Upper Limit/ Lower Limit	Speed Limit (kts)	Remarks
RNAV1	CA	RWY28	-	-	-	275.4 / 279	A750+	-	-
RNAV1	DF	DWS80	531613.0 / 0061050.0	Fly-By	-	-	-	-	L
RNAV1	TF	DW682	530541.9 / 0061715.9	Fly-By	11.2	200.2 / 204	-	-	-
RNAV1	TF	NEPOD	525657.2 / 0061029.8	Fly-By	9.7	154.9 / 159	-	-	-
RNAV1	TF	BEPAN	523136.2 / 0061549.5	Fly-By	25.6	187.3 / 191	-	-	-

INKUR5B CAT A/B SID RWY28

Navigation Performance	Path Terminator	WPT Name	Latitude (N), Longitude (W)	Fly-By or Fly-Over	Distance (NM)	True Track / Magnetic Track	Upper Limit/ Lower Limit	Speed Limit (kts)	Remarks
RNAV1	CA	RWY28	-	-	-	275.4 / 279	A750+	-	-
RNAV1	DF	DUB	532957.8 / 0061825.6	Fly-By	-	-	-	-	R
RNAV1	TF	DWN28	533413.0 / 0062520.0	Fly-By	5.9	316.0 / 320	-	-	-
RNAV1	TF	INKUR	533551.3 / 0072328.6	Fly-By	34.7	273.1 / 277	-	-	-

KISHA1B CAT A/B SID RWY28

Navigation Performance	Path Terminator	WPT Name	Latitude (N), Longitude (W)	Fly-By or Fly-Over	Distance (NM)	True Track / Magnetic Track	Upper Limit/ Lower Limit	Speed Limit (kts)	Remarks
RNAV1	CA	RWY28	-	-	-	275.4 / 279	A750+	-	-
RNAV1	DF	DUB	532957.8 / 0061825.6	Fly-By	-	-	-	-	R
RNAV1	TF	KISHA	532901.7 / 0053821.6	Fly-By	24.0	092.0 / 096	-	-	-
RNAV1	TF	LIPFY	532848.3 / 0053000.0	Fly-By	5.0	092.5 / 097	-	-	-

NEVRI1B CAT A/B SID RWY28

Navigation Performance	Path Terminator	WPT Name	Latitude (N), Longitude (W)	Fly-By or Fly-Over	Distance (NM)	True Track / Magnetic Track	Upper Limit/ Lower Limit	Speed Limit (kts)	Remarks
RNAV1	CA	RWY28	-	-	-	275.4 / 279	A750+	-	-
RNAV1	DF	DUB	532957.8 / 0061825.6	Fly-By	-	-	-	-	R
RNAV1	TF	DWN29	534521.0 / 0061621.0	Fly-By	15.5	004.6 / 009	-	-	-
RNAV1	TF	NEVRI	540406.0 / 0061611.4	Fly-By	18.8	000.3 / 004	-	-	-

OLONO1B CAT A/B SID RWY28

Navigation Performance	Path Terminator	WPT Name	Latitude (N), Longitude (W)	Fly-By or Fly-Over	Distance (NM)	True Track / Magnetic Track	Upper Limit/ Lower Limit	Speed Limit (kts)	Remarks
RNAV1	CA	RWY28	-	-	-	275.4 / 279	A750+	-	-
RNAV1	DF	DWS80	531613.0 / 0061050.0	Fly-By	-	-	-	-	L
RNAV1	TF	DW682	530541.9 / 0061715.9	Fly-By	11.2	200.2 / 204	-	-	-
RNAV1	TF	NEPOD	525657.2 / 0061029.8	Fly-By	9.7	154.9 / 159	-	-	-
RNAV1	TF	OLONO	524323.1 / 0064644.4	Fly-By	25.8	238.5 / 243	-	-	R

ROTEV1B CAT A/B SID RWY28

Navigation Performance	Path Terminator	WPT Name	Latitude (N), Longitude (W)	Fly-By or Fly-Over	Distance (NM)	True Track / Magnetic Track	Upper Limit/ Lower Limit	Speed Limit (kts)	Remarks
RNAV1	CA	RWY28	-	-	-	275.4 / 279	A750+	-	-
RNAV1	DF	DUB	532957.8 / 0061825.6	Fly-By	-	-	-	-	R
RNAV1	TF	DWN29	534521.0 / 0061621.0	Fly-By	15.5	004.6 / 009	-	-	-
RNAV1	TF	ROTEV	540143.7 / 0060358.4	Fly-By	18.0	024.0 / 028	-	-	-

SUROX1B CAT A/B SID RWY28

Navigation Performance	Path Terminator	WPT Name	Latitude (N), Longitude (W)	Fly-By or Fly-Over	Distance (NM)	True Track / Magnetic Track	Upper Limit/ Lower Limit	Speed Limit (kts)	Remarks
RNAV1	CA	RWY28	-	-	-	275.4 / 279	A750+	-	-
RNAV1	DF	DUB	532957.8 / 0061825.6	Fly-By	-	-	-	-	R
RNAV1	TF	DWN28	533413.0 / 0062520.0	Fly-By	5.9	316.0 / 320	-	-	-
RNAV1	TF	DWW04	534417.9 / 0065252.9	Fly-By	19.3	301.8 / 306	-	-	-
RNAV1	TF	SUROX	535948.0 / 0065936.5	Fly-By	16.0	345.7 / 350	-	-	-