

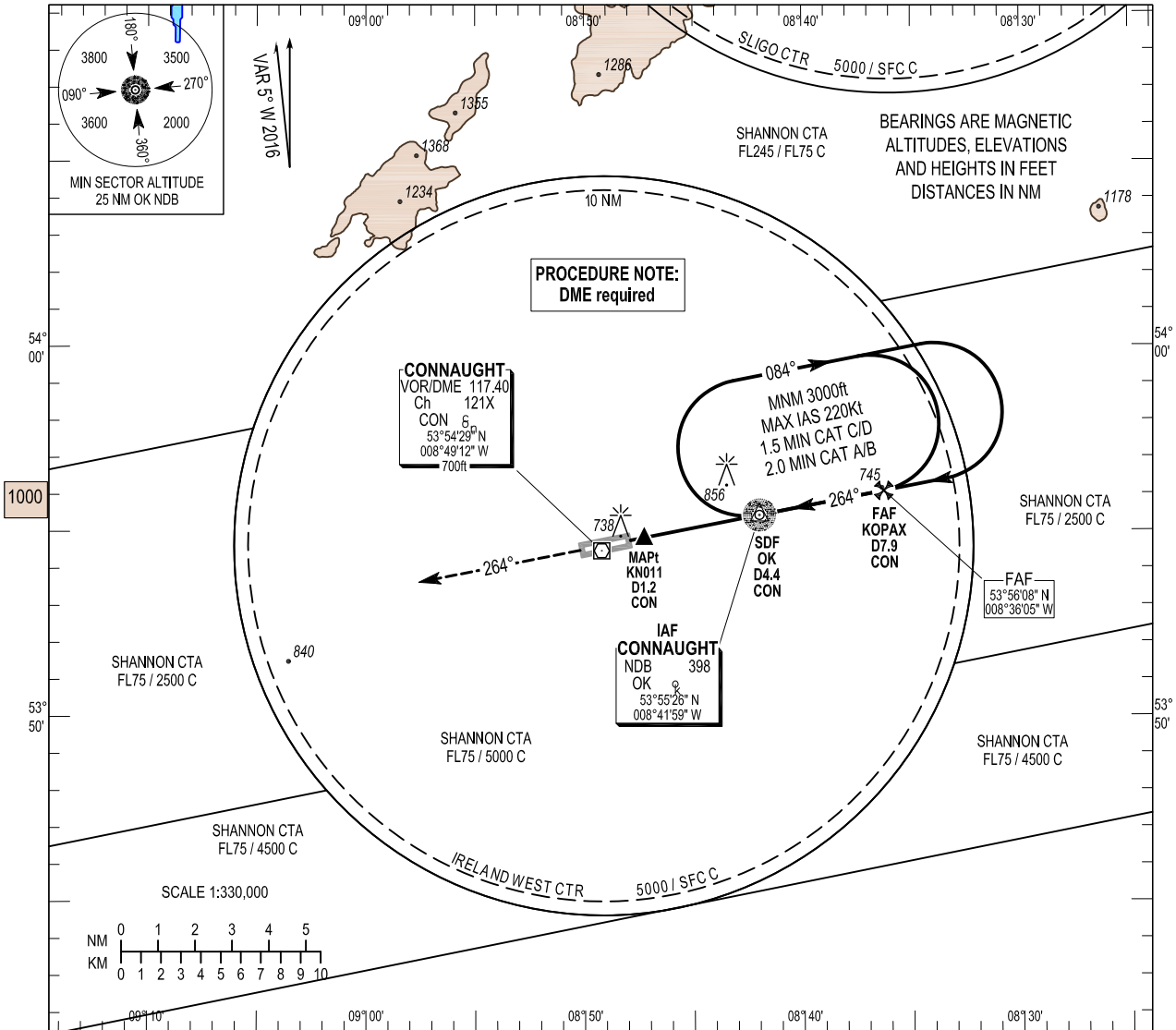
INSTRUMENT APPROACH CHART - ICAO

AERODROME ELEV 665 ft
 HEIGHTS RELATED TO THR RWY 26 - ELEV 665 ft

TWR 130.7
 GND 130.7, 121.9
 Emerg 121.5

CONSULT NOTAM FOR LATEST INFORMATION

IRELAND WEST/KNOCK NDB RWY 26
 (ACFT CAT A, B, C, D)

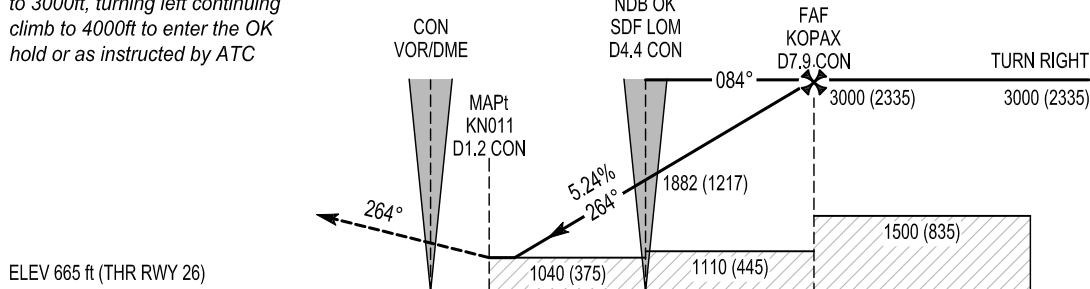


MISSED APPROACH:

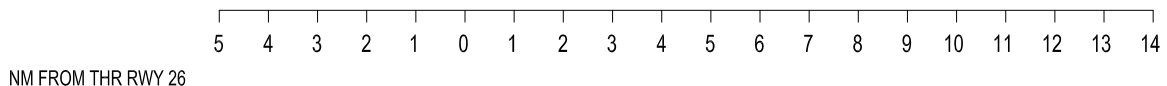
At the MAPt, Climb on track 264° to 3000ft, turning left continuing climb to 4000ft to enter the OK hold or as instructed by ATC

IAF ARRIVE AT OR ABOVE MSA
 NDB OK
 SDF LOM
 D4.4 CON

TRANSITION ALTITUDE 5000 ft



ELEV 665 ft (THR RWY 26)



OCA (H)	A	B	C	D	Ideal Altitude (Height) on Final Approach								
					D7.0 CON	D6.0 CON	D5.0 CON	D4.0 CON	D3.0 CON	D2.0 CON			
STRAIGHT-IN APPROACH	1040 (375)				2750 (2085)	2430 (1765)	2110 (1445)	1790 (1125)	1470 (805)	1160 (495)			
VISUAL MANOEUVRING (These heights are AAL)	1060 (395)	1160 (495)	1260 (595)	1360 (695)	Ground speed		Kts	70	90	100	120	140	160
					Descent Rate 5.24%, (3°), 318 ft/NM		ft / min	370	480	530	640	740	850

Change: General Revision.

Chart created by ASAP s.r.o.

RWY 26 NDB (DME required) Approach

Descent Angle:	3.00°			
Fix	IAF OK	FAF KOPAX	SDF OK	MAPt KN011
Fix Coordinates	535526.2N 0084159.3W	535608.4N 0083605.1W	535526.2N 0084159.3W	535449.9N 0084715.9W
Fix Formation Bearing 0 _T	-	079.06 OK	-	259.06 OK
Fix Formation Distances	4.37 CON	7.80 CON	4.37 CON	1.20 CON

Holding Identification EIKN AD 2.24-12

<i>Holding Fix</i>	<i>Latitude (N) / Longitude (W)</i>	<i>Inbound True Track °T</i>	<i>Inbound Magnetic Track °M</i>	<i>Maximum Indicated Airspeed (kts)</i>	<i>Minimum /Maximum Holding Level / Altitude (FL/ft)</i>	<i>Distance outbound (NM)</i>	<i>Direction of Turn</i>
NDB OK	535526.2 / 0084159.3	258.9	264	220	3000ft/FL80	6.1	R