

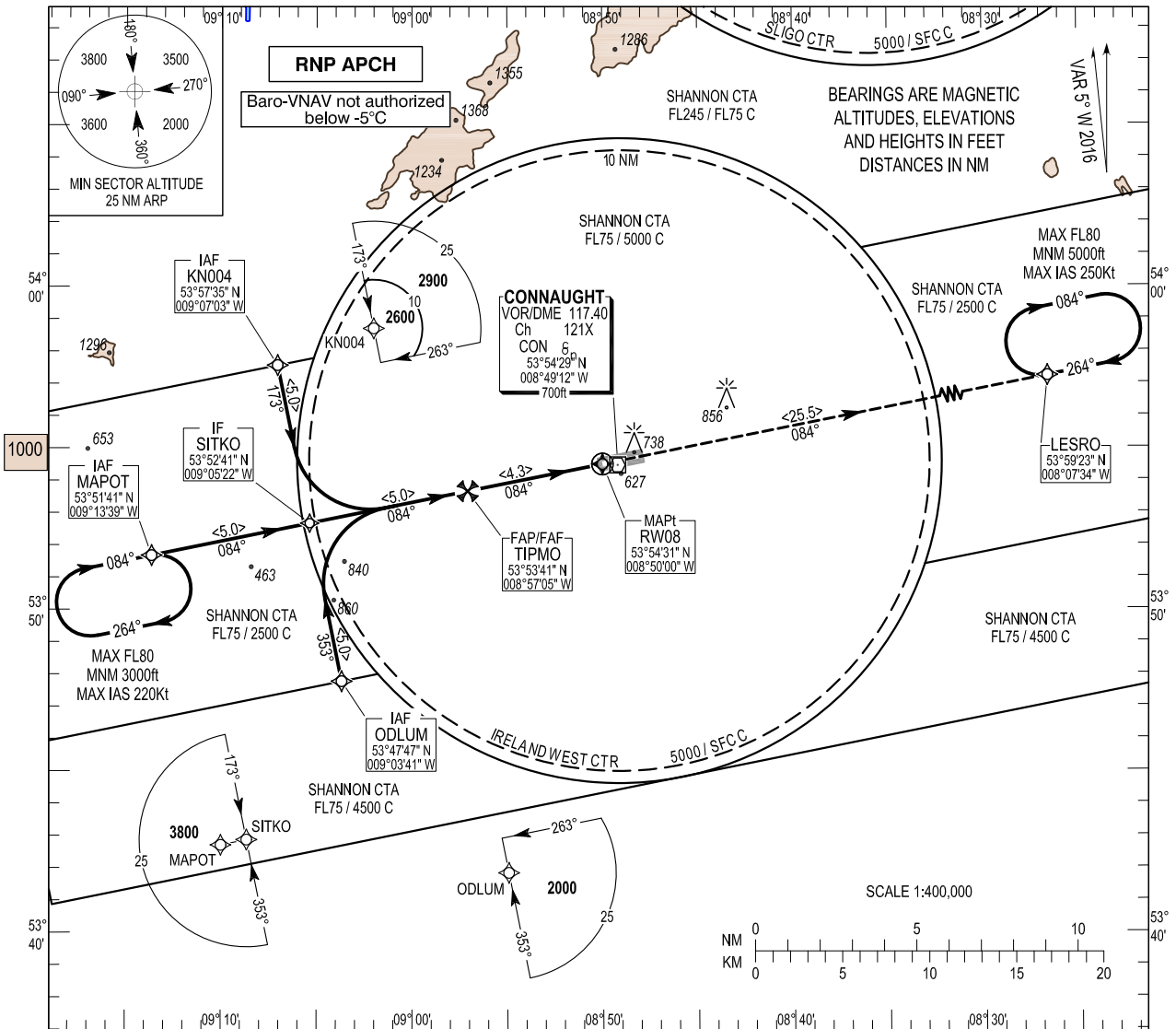
INSTRUMENT APPROACH CHART - ICAO

AERODROME ELEV 665 ft
 HEIGHTS RELATED TO THR RWY 08 - ELEV 592 ft

TWR 130.7
 GND 130.7, 121.9
 Emerg 121.5

CONSULT NOTAM FOR LATEST INFORMATION

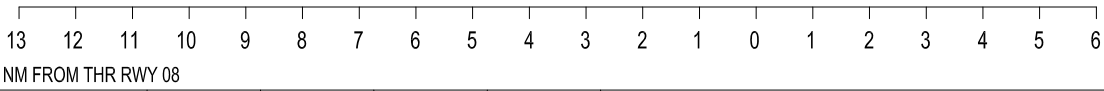
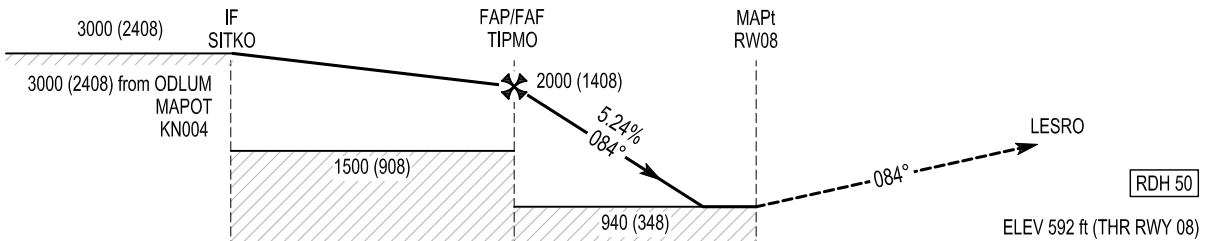
IRELAND WEST/KNOCK RNAV (GNSS) RWY 08
 (ACFT CAT A, B, C, D)
 MNM TEMP -5°C
 MAX TEMP +30°C



TRANSITION ALTITUDE 5000 ft

MISSED APPROACH:
 Climb straight ahead to 5000ft to enter the LESRO hold or as instructed by ATC.

Change: Final approach track.



Aircraft Category		A	B	C	D	Recommended Profile on Final Approach						
OCA (OCH)	LNAV/VNAV	860 (268)	870 (278)	880 (288)	890 (298)	THR 08	4.0	3.0	2.0	1.0		
	LNAV	940 (348)				ALT (HGT)	1915 (1323)	1597 (1005)	1278 (686)	960 (368)		
VISUAL MANOEUVRING (These heights are AAL)		1060 (395)	1160 (495)	1260 (595)	1360 (695)	Descent Rate 5.24%, (3°), 318 ft/NM		kts				
								80	100	120	140	160
								ft / min				
								430	530	640	740	850

Chart created by ASAP s.r.o.

IRELAND WEST/KNOCK RNAV (GNSS) RWY 08

Navigation Performance	Path Terminator	WPT Name	Latitude (N)/ Longitude (W)	Fly-By or Fly-over	Distance (NM)	True Track/ Magnetic Track	Upper limit/ Lower Limit	Speed Limit (kts)	VPA / TCH	Remarks
RNP APCH	IF	ODLUM	534747.5/ 0090341.2	Fly-By	-	-	-	-	-	-
RNP APCH	TF	SITKO	535241.1/ 0090522.0	Fly-By	5.0	348.5/ 354	+3000	-	-	-
RNP APCH	TF	TIPMO	535340.5/ 0085704.9	Fly-By	5.0	078.5/ 084	2000	-	-	R
RNP APCH	CF	RWY08	535430.7/ 0085000.5	Fly-Over	4.3	078.6/ 084	-	-	3.00 / 50	-
RNP APCH	CF	LESRO	535922.7/ 0080734.0	Fly-By	25.5	078.7/ 084	-	-	-	-

Navigation Performance	Path Terminator	WPT Name	Latitude (N)/ Longitude (W)	Fly-By or Fly-over	Distance (NM)	True Track/ Magnetic Track	Upper limit/ Lower Limit	Speed Limit (kts)	VPA / TCH	Remarks
RNP APCH	IF	MAPOT	535141.1/ 0091338.9	Fly-By	-	-	-	-	-	-
RNP APCH	TF	SITKO	535241.1/ 0090522.0	Fly-By	5.0	078.4/ 084	+3000	-	-	-
RNP APCH	TF	TIPMO	535340.5/ 0085704.9	Fly-By	5.0	078.5/ 084	2000	-	-	-
RNP APCH	CF	RWY08	535430.7/ 0085000.5	Fly-Over	4.3	078.6/ 084	-	-	3.00 / 50	-
RNP APCH	CF	LESRO	535922.7/ 0080734.0	Fly-By	25.5	078.7/ 084	-	-	-	-

Navigation Performance	Path Terminator	WPT Name	Latitude (N)/ Longitude (W)	Fly-By or Fly-over	Distance (NM)	True Track/ Magnetic Track	Upper limit/ Lower Limit	Speed Limit (kts)	VPA / TCH	Remarks
RNP APCH	IF	KN004	535734.7/ 0090703.2	Fly-By	-	-	-	-	-	-
RNP APCH	TF	SITKO	535241.1/ 0090522.0	Fly-By	5.0	168.5/ 173	+3000	-	-	-
RNP APCH	TF	TIPMO	535340.5/ 0085704.9	Fly-By	5.0	078.5/ 084	2000	-	-	L
RNP APCH	CF	RWY08	535430.7/ 0085000.5	Fly-Over	4.3	078.6/ 084	-	-	3.00 / 50	-
RNP APCH	CF	LESRO	535922.7/ 0080734.0	Fly-By	25.5	078.7/ 084	-	-	-	-

Hold Identification – EIKN AD 2.24-14

Holding Fix	Latitude (N) / Longitude (W)	Inbound True Track (degrees)	Inbound Mag Track (degrees)	Maximum Indicated Airspeed (kts)	Minimum/Maximum Holding Altitude/ Level (FL/ft)	Distance outbound Limit (NM)	Direction of Turn
LESRO	535922.7/ 0080734.0	259.4	264	250	5000ft/FL80	5.0	R
MAPOT	535141.1/ 0091338.9	078.3	084	220	3000ft/FL80	4.1	R