

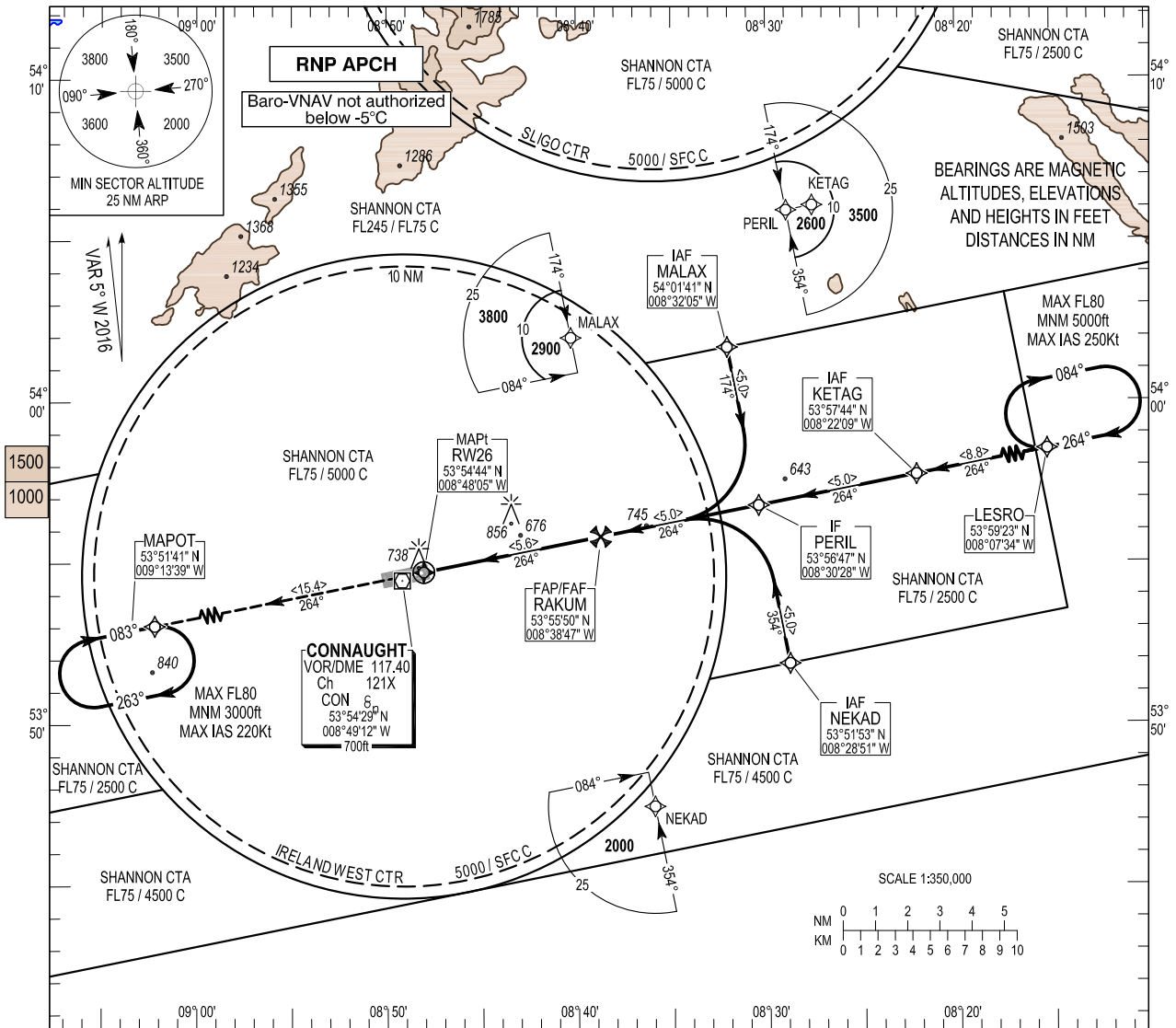
INSTRUMENT APPROACH CHART- ICAO

AERODROME ELEV 665 ft
 HEIGHTS RELATED TO THR RWY 26 - ELEV 665 ft

TWR 130.7
 GND 130.7, 121.9
 Emerg 121.5

CONSULT NOTAM FOR LATEST INFORMATION

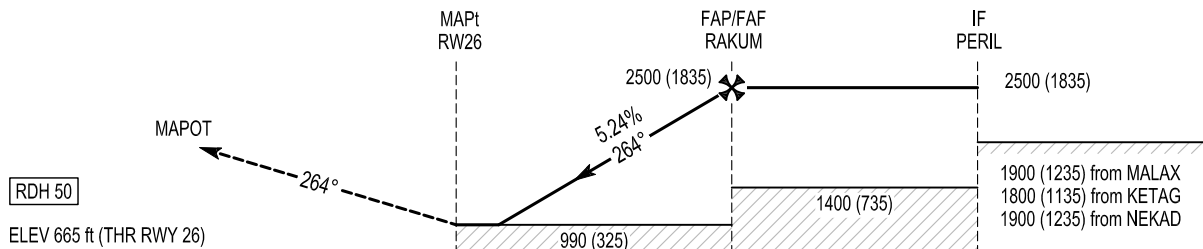
IRELAND WEST/KNOCK RNAV (GNSS) RWY 26
 (ACFT CAT A, B, C, D)
 MNM TEMP -5°C
 MAX +30°C



MISSED APPROACH:
 Climb straight ahead to 3000ft to enter the MAPOT hold or as instructed by ATC.

TRANSITION ALTITUDE 5000 ft

Change: General Revision.



7 6 5 4 3 2 1 0 1 2 3 4 5 6 7 8 9 10 11 12 13 14 15
 NM FROM THR RWY 26

Aircraft Category		A	B	C	D	Recommended Profile on Final Approach								
OCA (OCH)	LNAV/VNAV	870 (205)	880 (215)	890 (225)	900 (235)	THR 26	5.0	4.0	3.0	2.0	1.0			
	LNAV	990 (325)				ALT (HGT)	2307 (1642)	1988 (1323)	1670 (1005)	1351 (686)	1033 (368)			
VISUAL MANOEUVRING (These heights are AAL)		1060 (395)	1160 (495)	1260 (595)	1360 (695)	Descent Rate 5.24%, (3°), 318 ft/NM			kts	80	100	120	140	160
									ft / min	430	530	640	740	850

Chart created by ASAP s.r.o.

IRELAND WEST/KNOCK RNAV (GNSS) RWY 26

Navigation Performance	Path Terminator	WPT Name	Latitude (N)/ Longitude (W)	Fly-By or Fly-over	Distance (NM)	True Track/ Magnetic Track	Upper limit/ Lower Limit	Speed Limit (kts)	VPA / TCH	Remarks
RNP APCH	IF	MALAX	540141.2/ 0083205.4	Fly-By	-	-	-	-	-	-
RNP APCH	TF	PERIL	535647.1/ 0083028.2	Fly-By	5.0	169.0/ 174	2500	-	-	-
RNP APCH	TF	RAKUM	535549.5/ 0083846.5	Fly-By	5.0	259.0/ 264	2500	-	-	R
RNP APCH	CF	RW26	535444.3/ 0084804.8	Fly-Over	5.6	259.0/ 264	-	-	3.00 / 50	-
RNP APCH	CF	MAPOT	535141.1/ 0091338.9	Fly-By	15.4	259.0/ 264	-	-	-	-

Navigation Performance	Path Terminator	WPT Name	Latitude (N)/ Longitude (W)	Fly-By or Fly-over	Distance (NM)	True Track/ Magnetic Track	Upper limit/ Lower Limit	Speed Limit (kts)	VPA / TCH	Remarks
RNP APCH	IF	KETAG	535744.1/ 0082209.4	Fly-By	-	-	-	-	-	-
RNP APCH	TF	PERIL	535647.1/ 0083028.2	Fly-By	5.0	259.1/ 264	2500	-	-	-
RNP APCH	TF	RAKUM	535549.5/ 0083846.5	Fly-By	5.0	259.0/ 264	2500	-	-	-
RNP APCH	CF	RW26	535444.3/ 0084804.8	Fly-Over	5.6	259.0/ 264	-	-	3.00 / 50	-
RNP APCH	CF	MAPOT	535141.1/ 0091338.9	Fly-By	15.4	259.0/ 264	-	-	-	-

Navigation Performance	Path Terminator	WPT Name	Latitude (N)/ Longitude (W)	Fly-By or Fly-over	Distance (NM)	True Track/ Magnetic Track	Upper limit/ Lower Limit	Speed Limit (kts)	VPA / TCH	Remarks
RNP APCH	IF	NEKAD	535153.0/ 0082851.3	Fly-By	-	-	-	-	-	-
RNP APCH	TF	PERIL	535647.1/ 0083028.2	Fly-By	5.0	349.0/ 354	2500	-	-	-
RNP APCH	TF	RAKUM	535549.5/ 0083846.5	Fly-By	5.0	259.0/ 264	2500	-	-	L
RNP APCH	CF	RW26	535444.3/ 0084804.8	Fly-Over	5.6	259.0/ 264	-	-	3.00 / 50	-
RNP APCH	CF	MAPOT	535141.1/ 0091338.9	Fly-By	15.4	259.0/ 264	-	-	-	-

Hold Identification – EIKN AD 2.24-8

Holding Fix	Latitude (N) / Longitude (W)	Inbound True Track (degrees)	Inbound Mag Track (degrees)	Maximum Indicated Airspeed (kts)	Minimum /Maximum Holding Altitude/ Level (FL/ft)	Distance outbound Limit (NM)	Direction of Turn
LESRO	535922.7/ 0080734.0	259.4	264	250	5000ft/FL80	5.0	R
MAPOT	535141.1/ 0091338.9	078.3	083	220	3000ft/FL80	4.1	R