

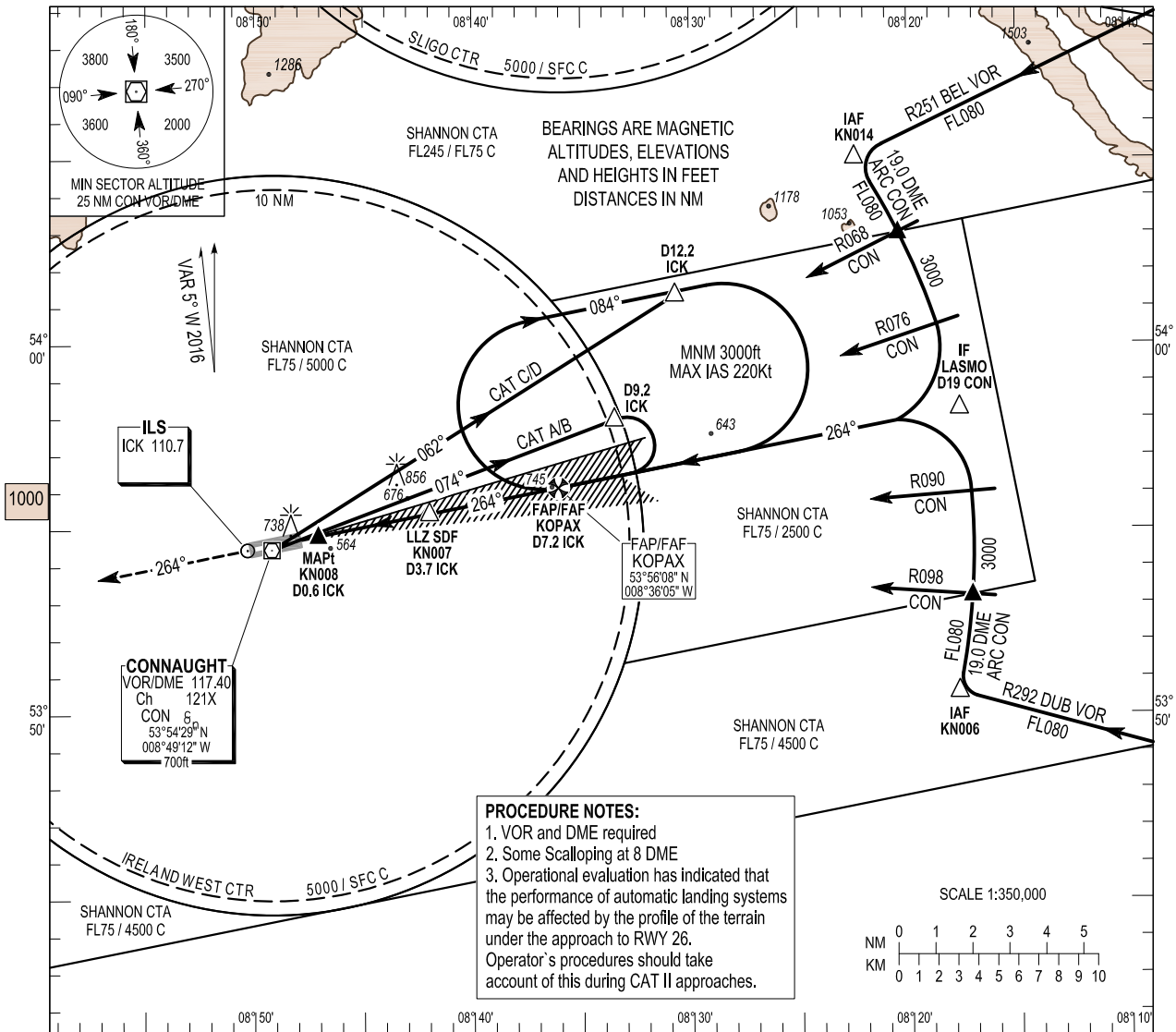
INSTRUMENT APPROACH CHART - ICAO

AERODROME ELEV 665 ft
 HEIGHTS RELATED TO THR RWY 26 - ELEV 665 ft

TWR	130.7
GND	130.7, 121.9
Emerg	121.5

CONSULT NOTAM FOR LATEST INFORMATION

IRELAND WEST/KNOCK
 ILS A CAT I & CAT II or LLZ RWY 26
 (ACFT CAT A, B, C, D)



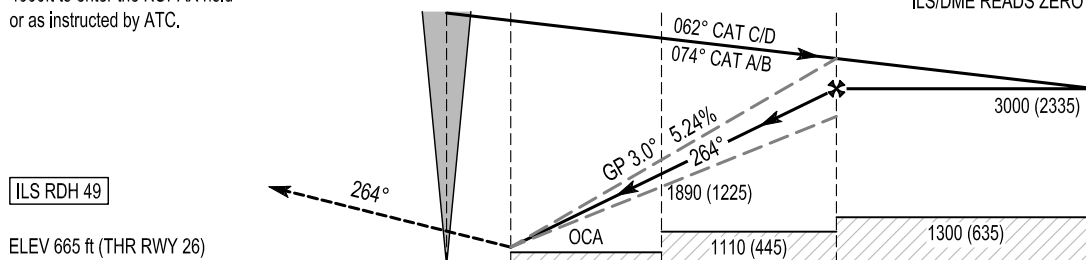
MISSED APPROACH:

At the MAPt, climb RDL 264° CON to 3000ft, turning left continuing climb to 4000ft to enter the KOPAX hold or as instructed by ATC.

IAF CON VOR/DME	4000 (3335)	LLZ MAPt KN008	D0.6 ICK	LLZ SDF KN007	D3.7 ICK	FAP/FAF KOPAX	D7.2 ICK
-----------------	-------------	----------------	----------	---------------	----------	---------------	----------

TRANSITION ALTITUDE 5000 ft

ILS/DME READS ZERO AT RWY26 THR



6 5 4 3 2 1 0 1 2 3 4 5 6 7 8 9 10 11 12 13 14
 NM FROM THR RWY 26

STRAIGHT-IN APPROACH	CAT I	CAT II	LLZ only GP INOP	OCA (H)	Ideal Altitude (Height)											
					A	B	C	D	7NM	6NM	5NM	4NM	3NM	2NM		
					810 (145)	815 (150)	825 (160)	835 (170)	2986(2321)	2656(1991)	2328(1663)	2002(1337)	1677(1012)	1354(689)		
									Ground speed	Kts	70	90	100	120	140	160
									Rate of descent	ft / min	372	478	531	637	743	849
									Rate of climb missed approach 2.5%							
									Ground speed	Kts	70	90	100	120	140	160
									Rate of climb	ft / min	152	202	253	303	354	379

Chart created by ASAP s.r.o.

RWY 26 ILS Approach

Fix	IAF KN014	IAF KN006	IF LASMO	FAP KOPAX
Fix Coordinates	540501.9N 0082226.3W	535035.7N 0081746.5W	535815.0N 0081741.1W	535608.4N 0083605.1W
Fix Formation Bearing °T	056.04 CON	101.61 CON	078.34 CON	078.69 ICK
Fix Formation Distances	19.01 CON	19.01 CON	19.01 CON	7.23 ICK

RWY 26 LOC Approach

Descent Angle:	3.00°					
Fix	IAF KN014	IAF KN006	IF LASMO	FAP KOPAX	SDF KN007	MAPt KN008
Fix Coordinates	540501.9N 0082226.3W	535035.7N 0081746.5W	535815.0N 0081741.1W	535608.4N 0083605.1W	535526.3N 0084159.3W	535451.4N 0084704.9W
Fix Formation Bearing °T	056.04 CON	101.61 CON	078.34 CON	078.69 ICK	078.86 ICK	078.69 ICK
Fix Formation Distances	19.01 CON	19.01 CON	19.01 CON	7.23 ICK	3.70 ICK	0.60 ICK

Holding Identification - EIKN AD 2.24-9

<i>Holding Fix</i>	<i>Latitude (N) / Longitude (W)</i>	<i>Inbound True Track (degrees)</i>	<i>Inbound Magnetic Track (degrees)</i>	<i>Maximum Indicated Airspeed (kts)</i>	<i>Minimum/ Maximum Holding Level / Altitude (FL/ft)</i>	<i>Distance outbound (NM)</i>	<i>Direction of Turn</i>
KOPAX	535608.4 / 0083605.1	259.0	264	220	3000ft / FL80	4.5	R