

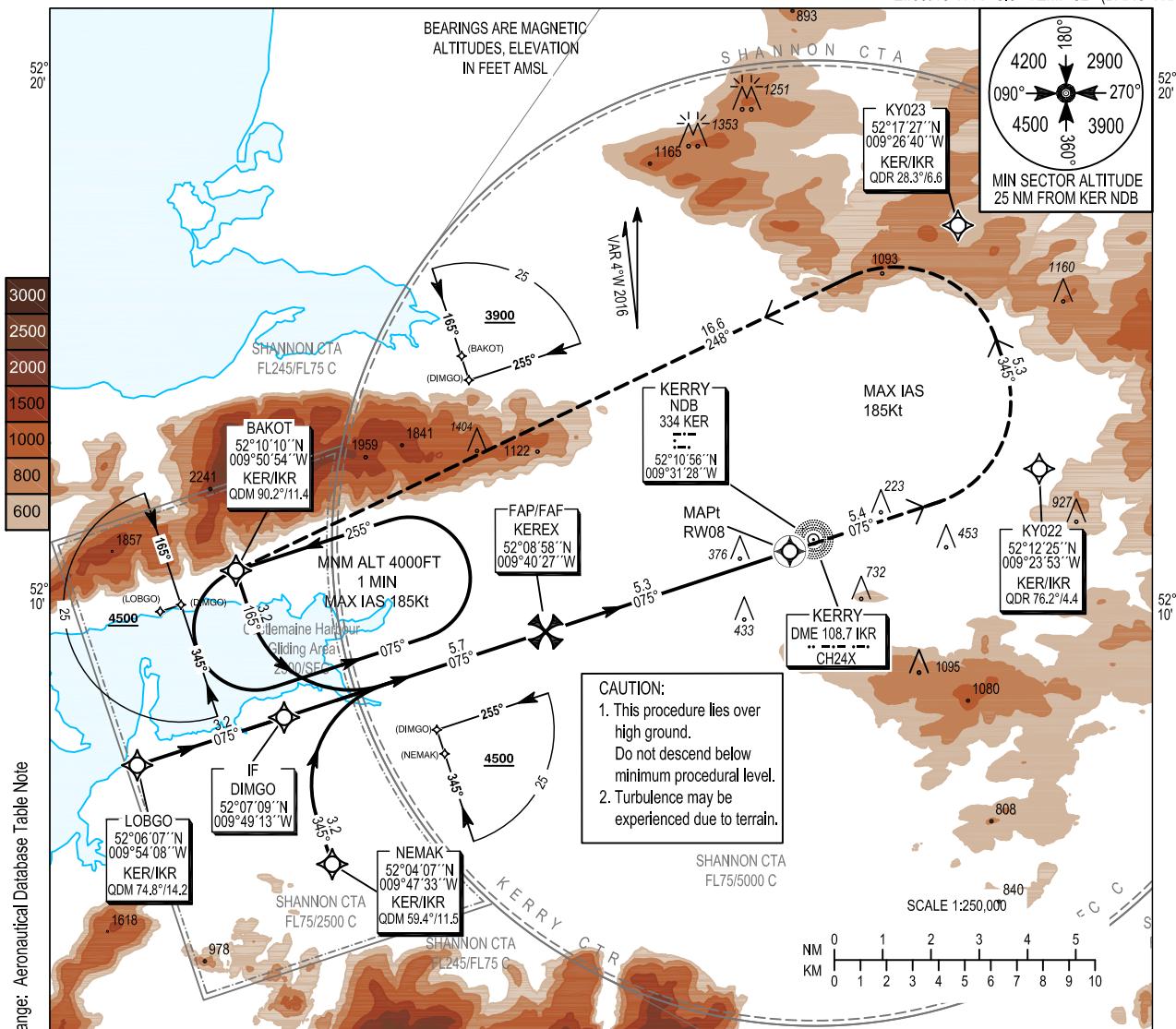
INSTRUMENT
APPROACH
CHART- ICAO

AERODROME ELEV 112 ft
HEIGHTS RELATED TO
THR RWY 08 - ELEV 82 ft

Kerry TWR	123.325
Kerry GND	121.600
Shannon Control	124.700
ATIS	118.025

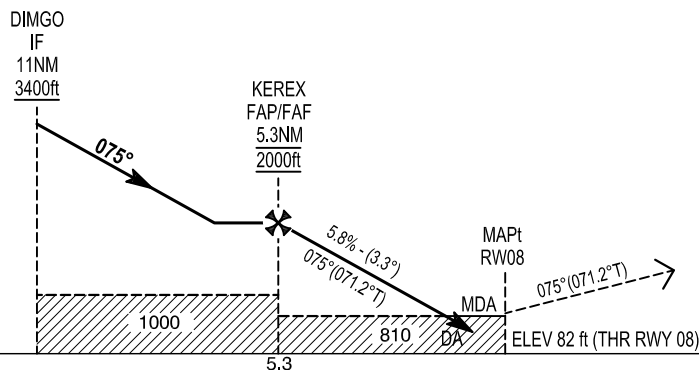
CONSULT NOTAM
FOR LATEST
INFORMATION

KERRY / KERRY
RNAV (GNSS) RWY 08
(ACFT CAT A,B,C)
MNM TEMP -10°C (BARO VNAV)
Effective VPA >3.5° TEMP 32° (BARO VNAV)



Change: Aeronautical Database Table Note

TRANSITION
ALTITUDE 5000 ft



MISSED APPROACH :
At the MAPt, climb extended centreline to KY022, then turn left to KY023 continuing climb to 4000 FT to enter the BAKOT hold or as instructed by ATC. MAX IAS 185Kts.

RDH 49

19 18 17 16 15 14 13 12 11 10 9 8 7 6 5 4 3 2 1 0 1 2 3 4 NM FROM THR RWY 08

OCA (H)	A	B	C
LNAV / VNAV 2.5%	727 (645)	737 (655)	750 (668)
LNAV / VNAV 3%	527 (445)	537 (455)	550 (468)
LNAV 2.5%	810 (728)		
LNAV 3%	700 (618)		
Visual Manoeuvring	Total Area	1040 (928)	1140 (1028)
(These heights are AAL)	North of RWY only	750 (638)	920 (808)

NOTE: INSTRUMENT APPROACHES ONLY AVAILABLE WHEN AIR TRAFFIC CONTROL ZONE IS ACTIVE UNLESS AUTHORIZED BY THE OPERATING STANDARDS DEPARTMENT OF THE IAA.

Recommended Profile in Final Approach to MAPt (RW08)						
DIST RW08 (NM)	5.0	4.0	3.0	2.0	1.0	
ALT / HT (ft)	1880/1798	1530/1448	1180/1098	830/748	480/398	
Ground Speed		kts	70	90	100	110
Descent Rate Gradient - 5.8%, (3.3°)		ft / min	410	530	580	640

Navigation Performance	Path Terminator	WPT Name	Latitude (N) / Longitude (W)	Fly-By or Fly-Over	Distance (NM)	True Track / Magnetic Track	Upper Limit / Lower Limit	Speed Limit (kts)	VPA / TCH	Remarks
RNP APCH	IF	NEMAK	520407.1 / 0094733.0	Fly-By	-	-	+4500	-	-	IAF
RNP APCH	TF	DIMGO	520708.7 / 0094913.2	Fly-By	3.2	341.2 / 345	+3400	-	-	IF
RNP APCH	TF	KEREX	520858.3 / 0094027.3	Fly-By	5.7	071.2 / 075	@2000	-	-	FAF
RNP APCH	TF	RW08	521040.8 / 0093215.5	Fly-Over	5.3	071.2 / 075	-	-	3.30 / 49	-
RNP APCH	CF	KY022	521225.4 / 0092352.9	Fly-By	5.4	071.2 / 075	- 4000	185	-	L
RNP APCH	TF	KY023	521727.0 / 0092640.2	Fly-By	5.3	341.2 / 345	- 4000	185	-	L
RNP APCH	TF	BAKOT	521010.3 / 0095053.7	Fly-Over	16.6	244.1 / 248	@4000	185	-	-

Navigation Performance	Path Terminator	WPT Name	Latitude (N) / Longitude (W)	Fly-By or Fly-Over	Distance (NM)	True Track / Magnetic Track	Upper Limit / Lower Limit	Speed Limit (kts)	VPA / TCH	Remarks
RNP APCH	IF	LOBGO	520607.2 / 0095408.3	Fly-By	-	-	+4500	-	-	IAF
RNP APCH	TF	DIMGO	520708.7 / 0094913.2	Fly-By	3.2	071.2 / 075	+3400	-	-	IF
RNP APCH	TF	KEREX	520858.3 / 0094027.3	Fly-By	5.7	071.2 / 075	@2000	-	-	FAF
RNP APCH	TF	RW08	521040.8 / 0093215.5	Fly-Over	5.3	071.2 / 075	-	-	3.30 / 49	-
RNP APCH	CF	KY022	521225.4 / 0092352.9	Fly-By	5.4	071.2 / 075	- 4000	185	-	L
RNP APCH	TF	KY023	521727.0 / 0092640.2	Fly-By	5.3	341.2 / 345	- 4000	185	-	L
RNP APCH	TF	BAKOT	521010.3 / 0095053.7	Fly-Over	16.6	244.1 / 248	@4000	185	-	-

Navigation Performance	Path Terminator	WPT Name	Latitude (N) / Longitude (W)	Fly-By or Fly-Over	Distance (NM)	True Track / Magnetic Track	Upper Limit / Lower Limit	Speed Limit (kts)	VPA / TCH	Remarks
RNP APCH	IF	BAKOT	521010.3 / 0095053.7	Fly-By	-	-	+3900	-	-	IAF
RNP APCH	TF	DIMGO	520708.7 / 0094913.2	Fly-By	3.2	161.2 / 165	+3400	-	-	IF
RNP APCH	TF	KEREX	520858.3 / 0094027.3	Fly-By	5.7	071.2 / 075	@2000	-	-	FAF
RNP APCH	TF	RW08	521040.8 / 0093215.5	Fly-Over	5.3	071.2 / 075	-	-	3.30 / 49	-
RNP APCH	CF	KY022	521225.4 / 0092352.9	Fly-By	5.4	071.2 / 075	- 4000	185	-	L
RNP APCH	TF	KY023	521727.0 / 0092640.2	Fly-By	5.3	341.2 / 345	- 4000	185	-	L
RNP APCH	TF	BAKOT	521010.3 / 0095053.7	Fly-Over	16.6	244.1 / 248	@4000	185	-	-

Holding Identification: EIKY AD 2.24-10

Holding Fix	Latitude (N) / Longitude (W)	Inbound True Track (degrees)	Inbound Magnetic Track (degrees)	Direction of Turn	Maximum Indicated Airspeed (kts)	Maximum / Minimum Holding Level / Altitude (FL/ft)	Distance outbound (NM)
BAKOT	521010.3 / 0095053.7	251.3	255	L	185	FL100 / 4000	3.4

Runway 08 LNAV/VNAV – Procedure unavailable if OAT is less than -10°C unless avionics include approved temperature compensation.

Runway 08 LNAV/VNAV – Note VPA may exceed 3.5° if OAT is higher than 32°C.