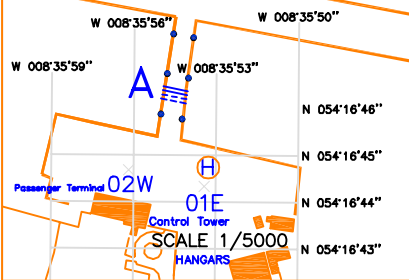
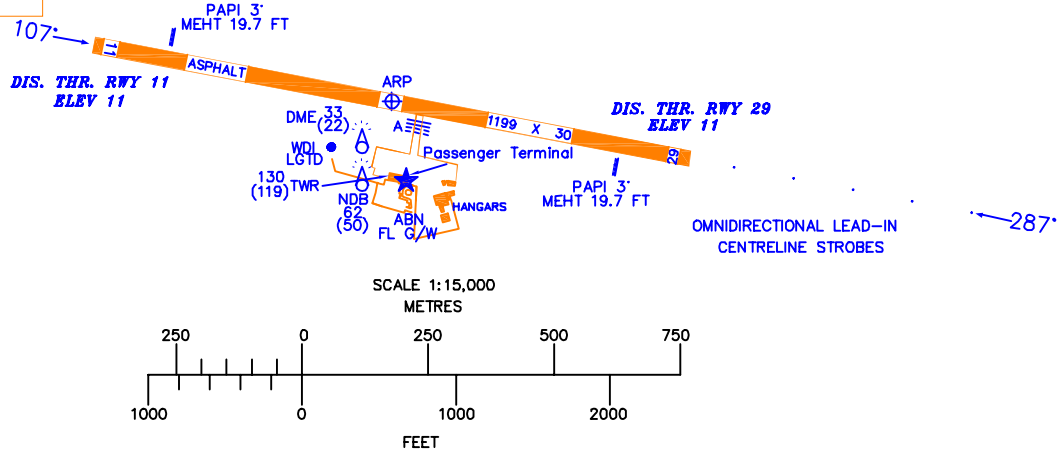


AERODROME CHART - ICAO 54 16 48.77 N AERODROME ELEV 11FT TWR 122.1 GND 122.1 CONSULT NOTAM FOR LATEST INFORMATION **SLIGO AIRPORT/ IRELAND**

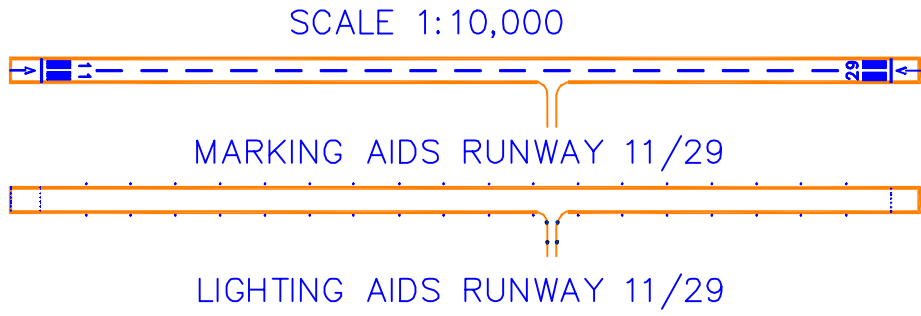
RWY	DIRECTION	THR		BEARING STRENGTH	LEGEND	
					AIRCRAFT STAND	1
11	107°	54 16 52.08 N	008 36 28.14 W	PCN 23/F/B/Y/T	RUNWAY HOLDING POSITION MARKING	≡≡≡≡
29	287°	54 16 45.45 N	008 35 26.16 W			



BEARINGS ARE MAGNETIC.
 LINEAR DIMENSIONS IN METRES.
 ELEVATIONS IN FEET AMSL.
 HEIGHTS IN FEET ABOVE AERODROME ELEVATION SHOWN IN BRACKETS.
 VAR 6°58' W 2003
 ANNUAL RATE OF CHANGE - 11' W



AMENDMENT RECORD		
NO.	DATE	ENTERED BY



Stand	Latitude	Longitude	Max Wingspan	Max Length	Conditions
01E	54 16 44.33 N	008 35 53.42 W	-	-	Self Manoeuvring.
02W	54 16 44.68 N	008 35 56.19 W	-	-	Self Manoeuvring.

NOTE 1: TAXIWAY A : PCN 19/F/C/Y/T.
 NOTE 2: APRON : PCN 23/F/B/Y/T.
 NOTE 3: TAXIWAY A : 14M WIDE.
 NOTE 4: RTILS located beside Rwy 11 threshold flashing every 1.2 seconds omnidirectional.
 NOTE 5: Sequential Strobe with RTILS located beside Rwy 29 threshold flashing every 1.2 seconds omnidirectional.
 NOTE 6: Helicopter landing area on the east side of the apron.

CHANGES: NDB SLIG .