

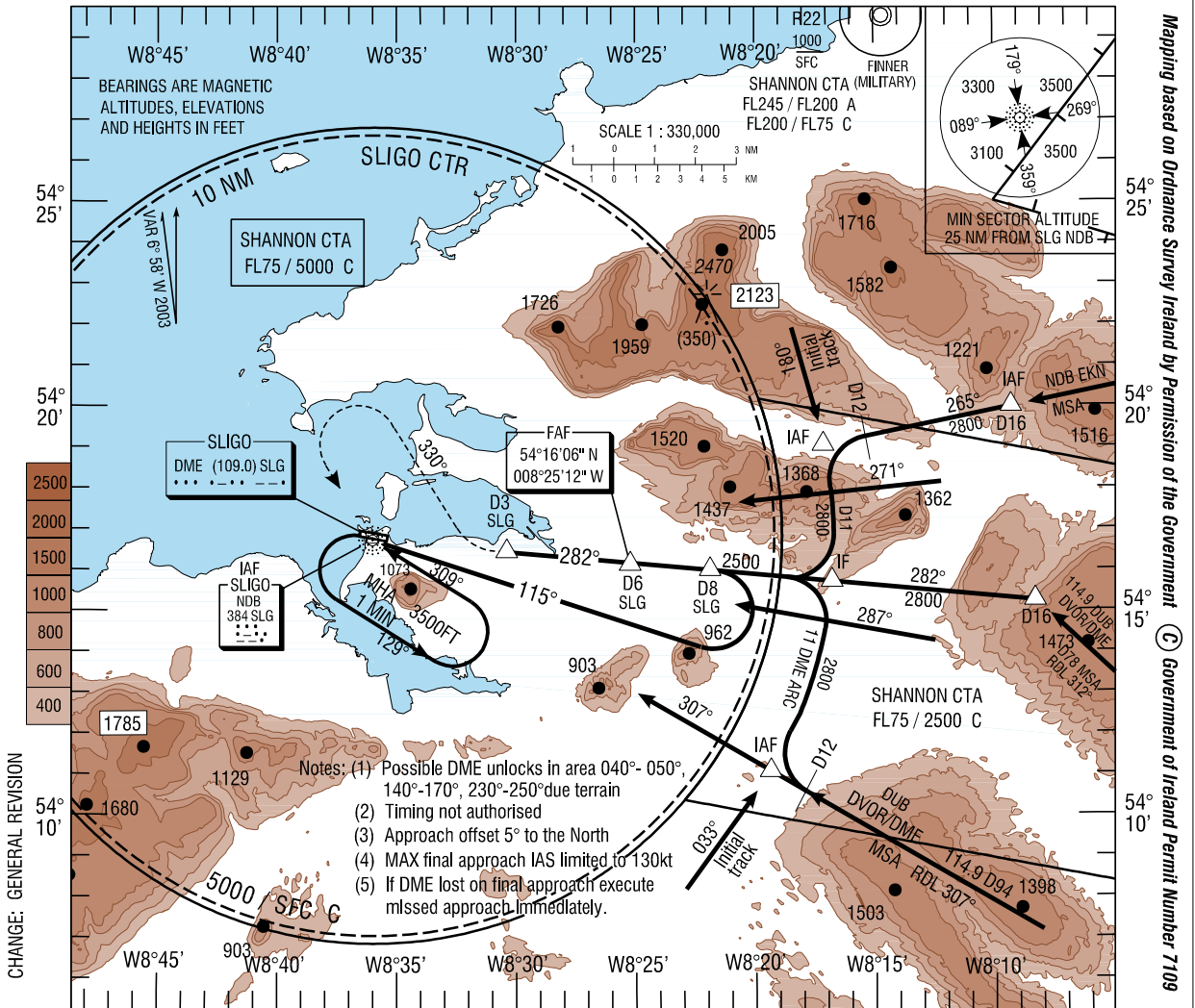
**INSTRUMENT APPROACH CHART- ICAO**

**AERODROME ELEV 11 ft**  
HEIGHTS RELATED TO AERODROME ELEVATION

Tower 122.1  
Shannon  
Control 124.7

CONSULT NOTAM FOR LATEST INFORMATION

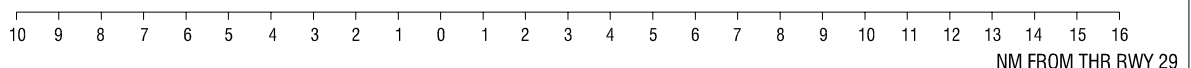
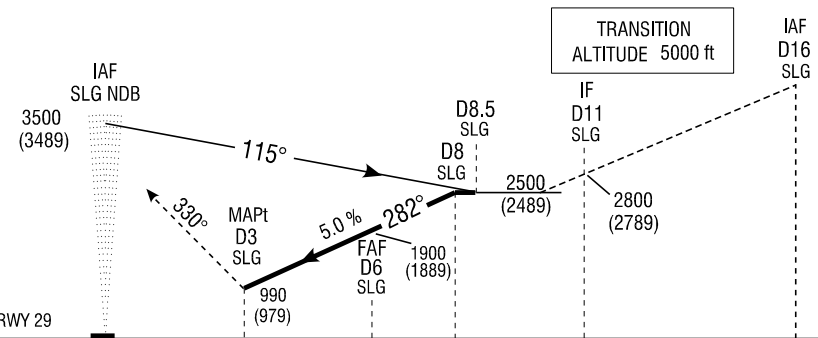
**SLIGO / SLIGO NDB/DME RWY 29**  
(ACFT CAT A, B)



**MISSED APPROACH:** At MAPt climbing turn right onto track 330°M. Climb 2500 (2489)ft, then climbing turn left to return to SLG NDB at 3500 (3489)ft, or as directed.

ELEV 11ft (THR RWY 29)

DME ZERO RANGE OCCURS 47m BEFORE THR RWY 29



OCA (H)	A	B	Note: Instrument approaches only available when Air Traffic Control Zone is active unless authorised by Operating Standards Dept of the Irish Aviation Authority.	IDEAL ALTITUDE / HEIGHT ON FINAL APPROACH					
Straight - in	990 (979)			DME	5 DME	4 DME	3.5 DME		
Visual Manoeuvring (circling) OCA(H):				ALT/HT	1600 (1589)	1290 (1279)	1140 (1129)		
Total Area :	CAT A, B:	1370(1359)	Ground Speed		80	90	100	110	120
Sectorised :	North of Runway		Rate of Descent - Gradient 5.0%		410	460	510	560	610
	CAT A, B:	520(509)	ft / min						