

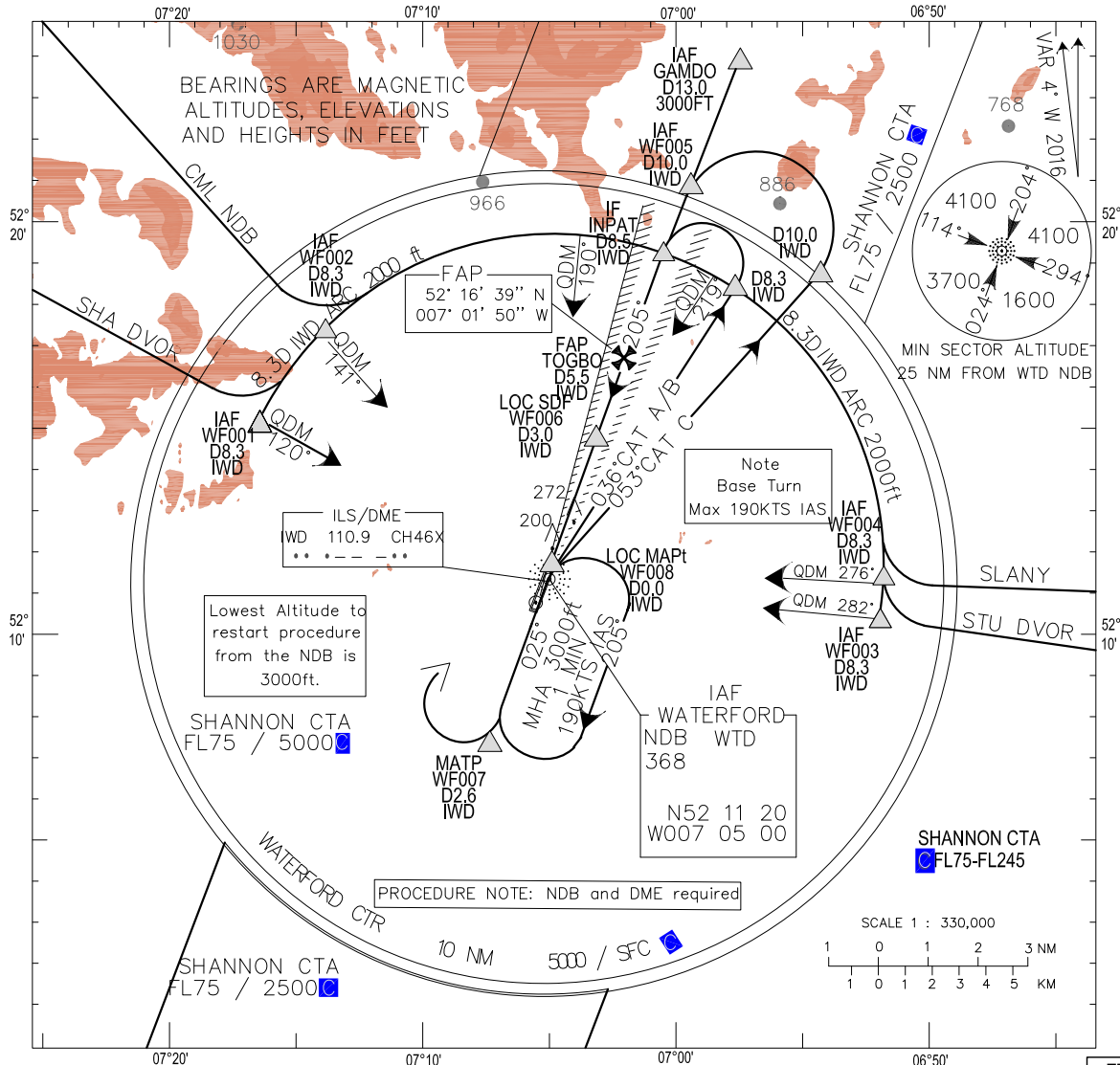
INSTRUMENT APPROACH CHART - ICAO

AERODROME ELEV 119 ft
HEIGHTS RELATED TO THR RWY 21 - ELEV 113 ft

TWR 129.850
ATIS 121.150
Shannon 124.700

CONSULT NOTAM FOR LATEST INFORMATION

WATERFORD/WATERFORD ILS CAT I or LOC RWY 21 (ACFT CAT A, B, C)



MISSED APPROACH:

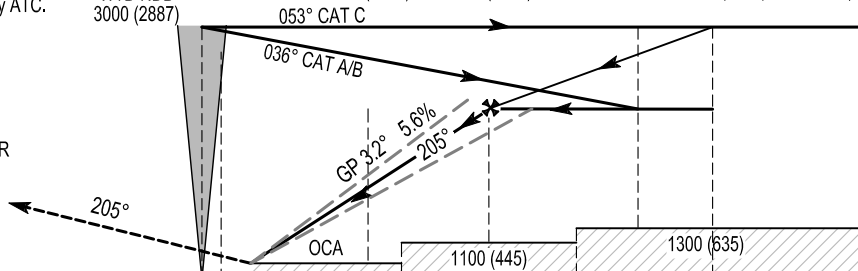
At the MAPt, climb straight ahead. At D2.6 IWD climbing right turn to return to WTD NDB hold at 3000ft (2887ft) or as instructed by ATC. Max 240 KTS IAS

IAF WTD NDB 3000 (2887)	LOC MAPt WF008 D0.0 IWD	LOC SDF WF006 D3.0 IWD 1200 (1087)	FAP TOGBO D5.5 IWD 2000 (1887)	IF INPAT D8.5 IWD 2500 (2387)	IAF WF005 D10.0 IWD 3000 (2887)	IAF GAMDO D13.0 IWD 3000 (2887)
----------------------------	-------------------------------	---	---	--	--	--

DME READS ZERO AT RWY21 THR

ILS RDH 45

ELEV 113ft (THR RWY 21)



6	5	4	3	2	1	0	1	2	3	4	5	6	7	8	9	10	11	12	13	14
NM FROM THR RWY 21																				

		OCA (H)	A	B	C								
STRAIGHT-IN APPROACH	CAT I	292 (179)	299 (186)	308 (195)									
	LOC	540 (427)											
	VISUAL MANOEUVRING (These heights are AAL)		590 (471)	720 (601)	920 (801)								
		Ideal Altitude (Height) Final Approach IWD DME		5NM	4NM	3NM	2NM	1NM					
		Ground speed		Kts	70	80	100	120	140	160			
		Rate of descent Gradient 5.6% (3.2°) 343ft/NM		ft / min	400	450	570	680	790	849			
		Rate of climb missed approach 2.5%											
		Ground speed		Kts	70	90	100	120	140	160			
		Rate of climb Gradient 2.5%		ft / min	152	202	253	303	354	379			

RWY21 ILS Approach

Fix	IAF WF001	IAF WF002	IAF WF003	IAF WF004	IAF GAMDO	IAF WF005	IF INPAT	FAP TOGBO	MATP WF007
Fix Co-Ordinates	521507.1N 0071722.6W	521736.1N 0071420.1W	521009.0N 0065119.7W	521103.6N 0065111.9W	522338.2N 0065726.0W	522050.5N 0065911.6W	521926.6N 0070004.4W	521638.9N 0070149.7W	520843.4N 0070647.0W
Fix formation Bearing °T	116.21 WTD	137.28 WTD	278.09 WTD	271.58 WTD	201.06 IWD	201.04 IWD	201.03 IWD	201.02 IWD	020.59 IWD
Fix Formation Distances	8.30 IWD	8.30 IWD	8.30 IWD	8.30 IWD	13.00 IWD	10.00 IWD	8.50 IWD	5.50 IWD	2.62 IWD

RWY21 LOC Approach

Descent Angle:	3.20°										
Fix	IAF WF001	IAF WF002	IAF WF003	IAF WF004	IAF GAMDO	IAF WF005	IF INPAT	FAP TOGBO	SDF WF006	MAPt WF008	MATP WF007
Fix Co-Ordinates	521507.1N 0071722.6W	521736.1N 0071420.1W	521009.0N 0065119.7W	521103.6N 0065111.9W	522338.2N 0065726.0W	522050.5N 0065911.6W	521926.6N 0070004.4W	521638.9N 0070149.7W	521419.0N 0070317.3W	521131.2N 0070502.2W	520843.4N 0070647.0W
Fix formation Bearing °T	116.21 WTD	137.28 WTD	278.09 WTD	271.58 WTD	201.06 IWD	201.04 IWD	201.03 IWD	201.02 IWD	201.01 IWD	201.02 IWD	020.59 IWD
Fix Formation Distances	8.30 IWD	8.30 IWD	8.30 IWD	8.30 IWD	13.00 IWD	10.00 IWD	8.50 IWD	5.50 IWD	3.00 IWD	0.00 IWD	2.62 IWD

Holding Identification: NDB WTD

Holding Fix	Latitude (N)/ Longitude (W)	Inbound True Track °T	Inbound Magnetic Track °M	Max Indicated Airspeed (kts)	Maximum/ Minimum Holding Level/ Altitude (FL/ft)	Distance outbound (NM)	Direction of Turn
NDB WTD	521120.4N/ 0070500.0W	020.0	025	190	FL100/ 3000ft	3.7	R