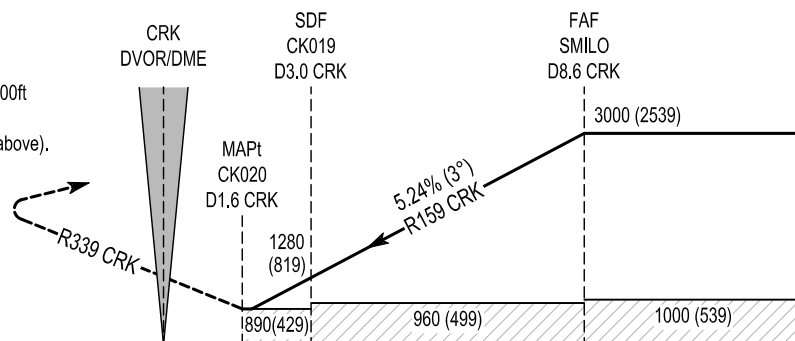


Change: Missed approach IAS increased to 220kts.

**MISSED APPROACH:**  
Climb straight ahead to CK034 climbing to 4000ft. Turn right to CRK DVOR/DME maintaining 4000ft to initiate another approach or as directed by ATC (See note 7 above).



**TRANSITION ALTITUDE 5000 ft**

	5	4	3	2	1	0	1	2	3	4	5	6	7	8	9	10	11	12	13	14
OCA (H)	A	B	C	D	Recommended Profile on Final Approach															
STRAIGHT - IN APPROACH	890 (429)				CRK DME	8	7	6	5	4	3	2								
					ALT (HT)	2870 (2409)	2555 (2094)	2235 (1774)	1920 (1459)	1600 (1139)	1280 (819)	960 (499)								
VISUAL MANOEUVRING (These heights are AAL)	960 (458)	1000 (498)	1100 (598)	1200 (698)	Descent Rate 5.24%, (3°), 318 ft/NM				Kts	80	100	120	140	160						
									ft / min	425	530	640	745	850						

11 OCT 2018

**RWY 34 VOR Approach**

Descent Angle:	5.24%			
Fix	FAF SMILO	SDF CK019	MAPt CK020	MATP CK034
Fix Coordinates	514239.7N 0082355.4W	514742.7N 0082738.6W	514859.0N 0082834.9W	515809.3N 0083523.0W
Fix Formation Bearing °T	155.38 CRK	155.38 CRK	155.38 CRK	335.38 CRK
Fix Formation Distances	8.56 CRK	3.00 CRK	1.60 CRK	8.50 CRK

**Holding Identification - EICK AD 2.24-23**

<i>Holding Fix</i>	<i>Latitude (N) / Longitude (W)</i>	<i>Inbound True Track (degrees)</i>	<i>Inbound Magnetic Track (degrees)</i>	<i>Maximum Indicated Airspeed (kts)</i>	<i>Minimum / Maximum Holding Level / Altitude (FL/ft)</i>	<i>Limiting outbound distance (NM)</i>	<i>Direction of Turn</i>
SMILO	514239.7N / 0082355.4W	335.5	339	220	3000ft / FL080	D14 CRK	L