

INSTRUMENT  
APPROACH  
CHART - ICAO

AERODROME ELEV 502 ft  
HEIGHTS RELATED TO THR  
RWY 07 - ELEV 471 ft

TWR 119.300  
GND 121.850  
ATIS 120.925  
CRK APP 119.900

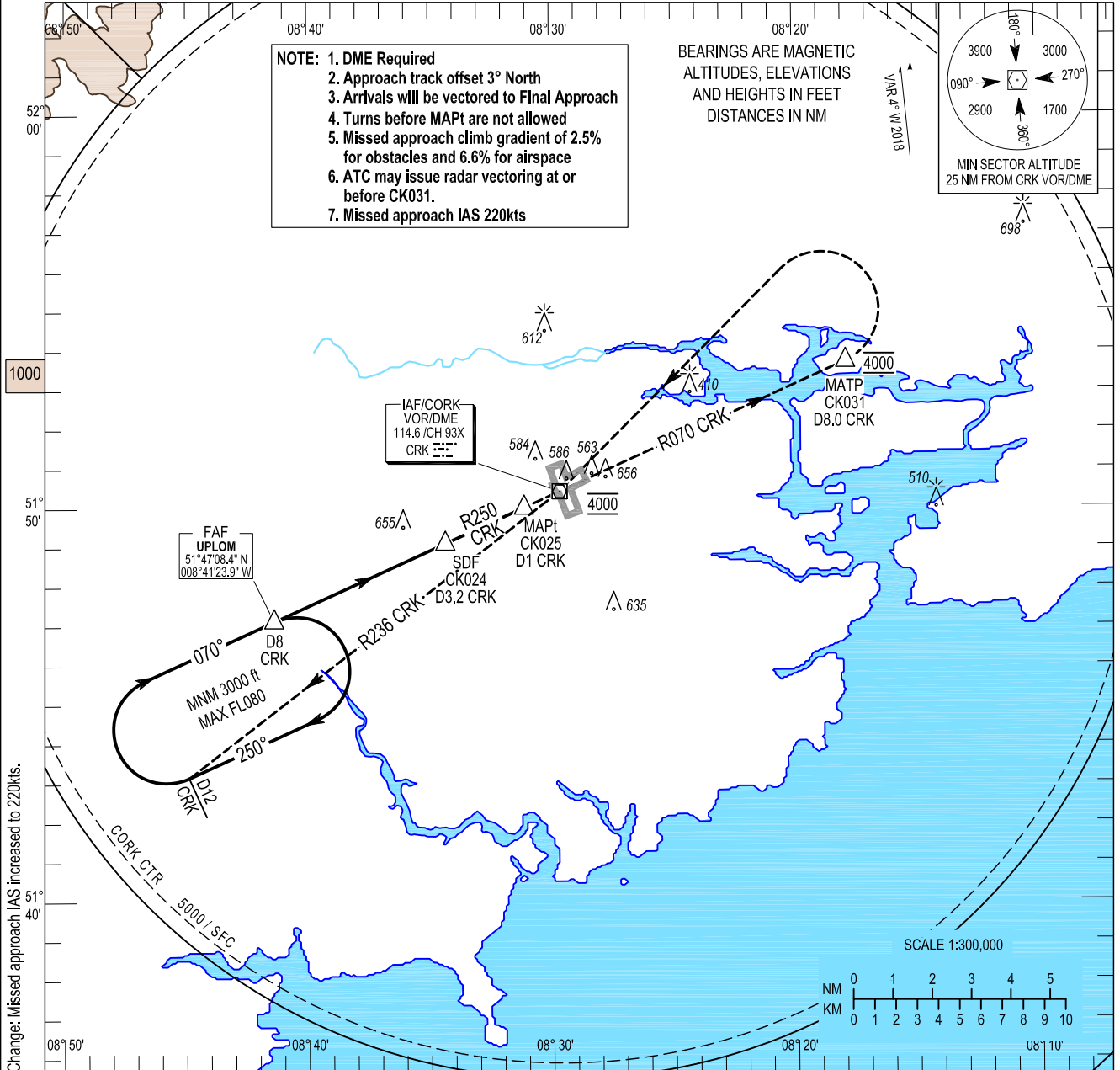
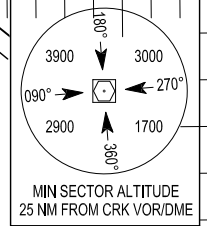
CONSULT NOTAM  
FOR LATEST  
INFORMATION

CORK / CORK  
VOR RWY 07  
(ACFT CAT A, B)

- NOTE:**
1. DME Required
  2. Approach track offset 3° North
  3. Arrivals will be vectored to Final Approach
  4. Turns before MAPt are not allowed
  5. Missed approach climb gradient of 2.5% for obstacles and 6.6% for airspace
  6. ATC may issue radar vectoring at or before CK031.
  7. Missed approach IAS 220kts

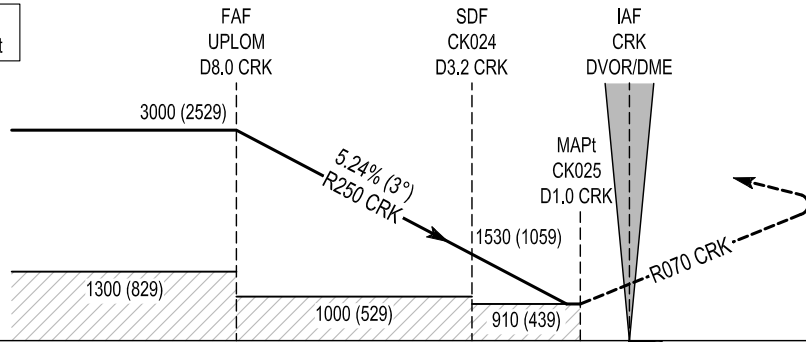
BEARINGS ARE MAGNETIC  
ALTITUDES, ELEVATIONS  
AND HEIGHTS IN FEET  
DISTANCES IN NM

VAR 4° W 2018



Change: Missed approach IAS increased to 220kts.

TRANSITION  
ALTITUDE 5000 ft



**MISSED APPROACH:**  
Climb straight ahead to CK031  
climbing to 4000ft. Turn left  
to CRK DVOR/DME maintaining 4000ft  
to initiate another approach  
or as directed by ATC (See note 6 above).

ELEV 471 ft (THR RWY 07)

	14	13	12	11	10	9	8	7	6	5	4	3	2	1	0	1	2	3	4	5	
OCA (H)	A							B													
STRAIGHT - IN APPROACH	910 (439)							Recommended Profile on Final Approach													
								CRK DME	7	6	5	4	3	2							
							ALT (HT)	2740 (2269)	2420 (1949)	2105 (1634)	1785 (1314)	1465 (994)	1150 (679)								
VISUAL MANOEUVRING (These heights are AAL)	960 (458)	1000 (498)	1100 (598)	1200 (698)	Descent Rate 5.24%, (3°), 318 ft/NM						Kts	80	100	120	140	160					
							ft / min	425	530	640	745	850									

11 OCT 2018

**RWY 07 VOR Approach**

Descent Angle:	5.24%				
Fix	FAF UPL0M	SDF CK024	MAPt CK025	MATP CK031	IAF CRK
Fix Coordinates	514708.4N 0084123.9W	514907.1N 0083421.8W	515001.5N 0083107.6W	515342.9N 0081752.9W	515026.2N 0082939.4W
Fix Formation Bearing °T	245.71 CRK	245.71 CRK	245.71 CRK	065.71 CRK	-
Fix Formation Distances	8.00 CRK	3.20 CRK	1.00 CRK	8.00 CRK	-

**Holding Identification - EICK AD 2.24-25**

<i>Holding Fix</i>	<i>Latitude (N) / Longitude (W)</i>	<i>Inbound True Track (degrees)</i>	<i>Inbound Magnetic Track (degrees)</i>	<i>Maximum Indicated Airspeed (kts)</i>	<i>Minimum / Maximum Holding Level / Altitude (FL/ft)</i>	<i>Limiting outbound distance (NM)</i>	<i>Direction of Turn</i>
UPL0M	514708.4N / 0084123.9W	065.5	070	220	3000ft / FL080	D12 CRK	R