

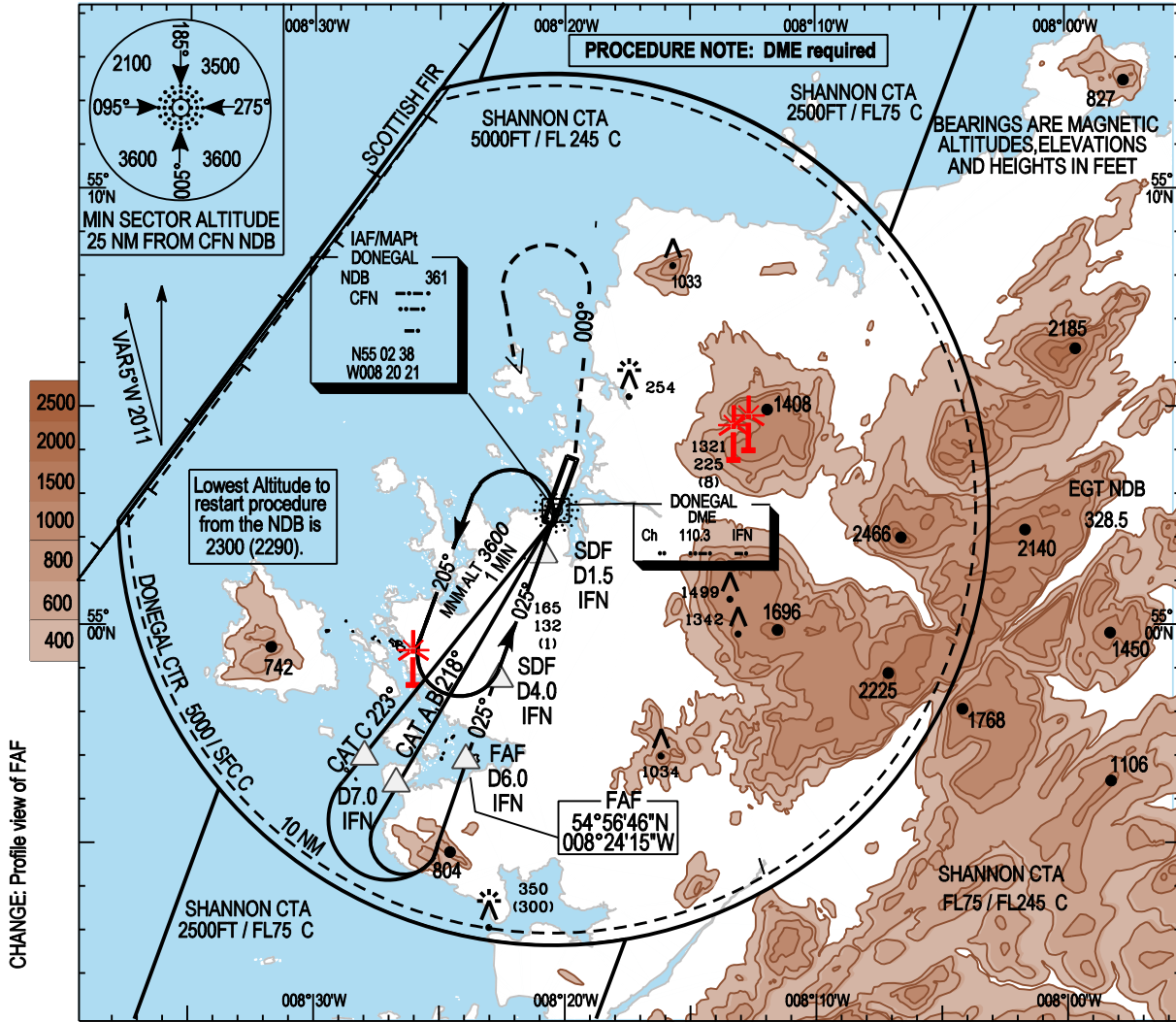
INSTRUMENT
APPROACH
CHART - ICAO

AERODROME ELEV 30 ft
HEIGHTS RELATED TO THR
RWY 03 - ELEV 10ft

TOWER 129.8
GND 129.8
ATIS 129.925

CONSULT NOTAM
FOR LATEST
INFORMATION

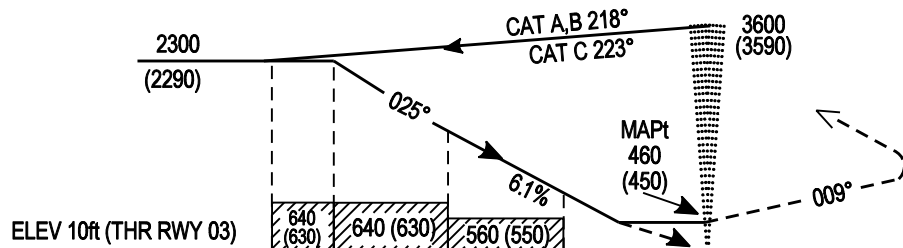
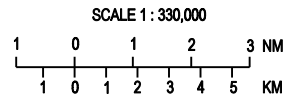
DONEGAL/DONEGAL
NDB RWY 03
(ACFT CAT A,B,C)



Mapping based on Ordnance Survey Ireland by Permission of the Government © Government of Ireland Permit Number 7109

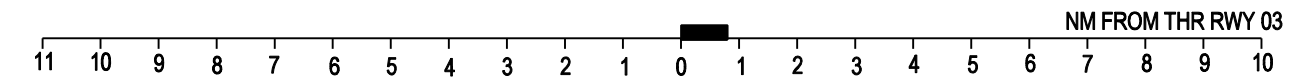
TRANSITION
ALTITUDE 5000ft

	FAF	SDF	SDF	IAF/MAPt
	D6.0	D4.0	D1.5	CFN NDB
	IFN	IFN	IFN	
	2300	1550	600	
	(2290)	(1540)	(590)	



MISSED APPROACH: At or before MAPt climb straight ahead. At 800 (790)ft climbing turn left onto 009°M. At 1200 (1190)ft or 3 DME IFN whichever is later climbing left turn to return to NDB CFN to hold 3600 (3590)ft or as directed.

DME READS ZERO AT THR RWY 03



OCA (H)	A	B	C	Note: Instrument approaches only available when Air Traffic Control Zone is active unless authorised by Flight Operations Dept of The Irish Aviation Authority	Recommended profile on Final Approach					
Straight - in Approach	← 460 (450) →				Decent Rate 6.1%, (3.5°), 370ft/NM					
					DME	5 DME	4 DME	3 DME	2 DME	1 DME
Visual Manoeuvring	650 (620)	650 (620)	1900 (1870)	ALT / HT	1910(1900)	1550(1540)	1180(1170)	810 (800)	440 (430)	
				Ground Speed	Kts	70	80	100	120	140
				Rate of Decent	ft/min	430	495	615	740	865