

RNAV STANDARD DEPARTURE CHART
INSTRUMENT (SID) - ICAO

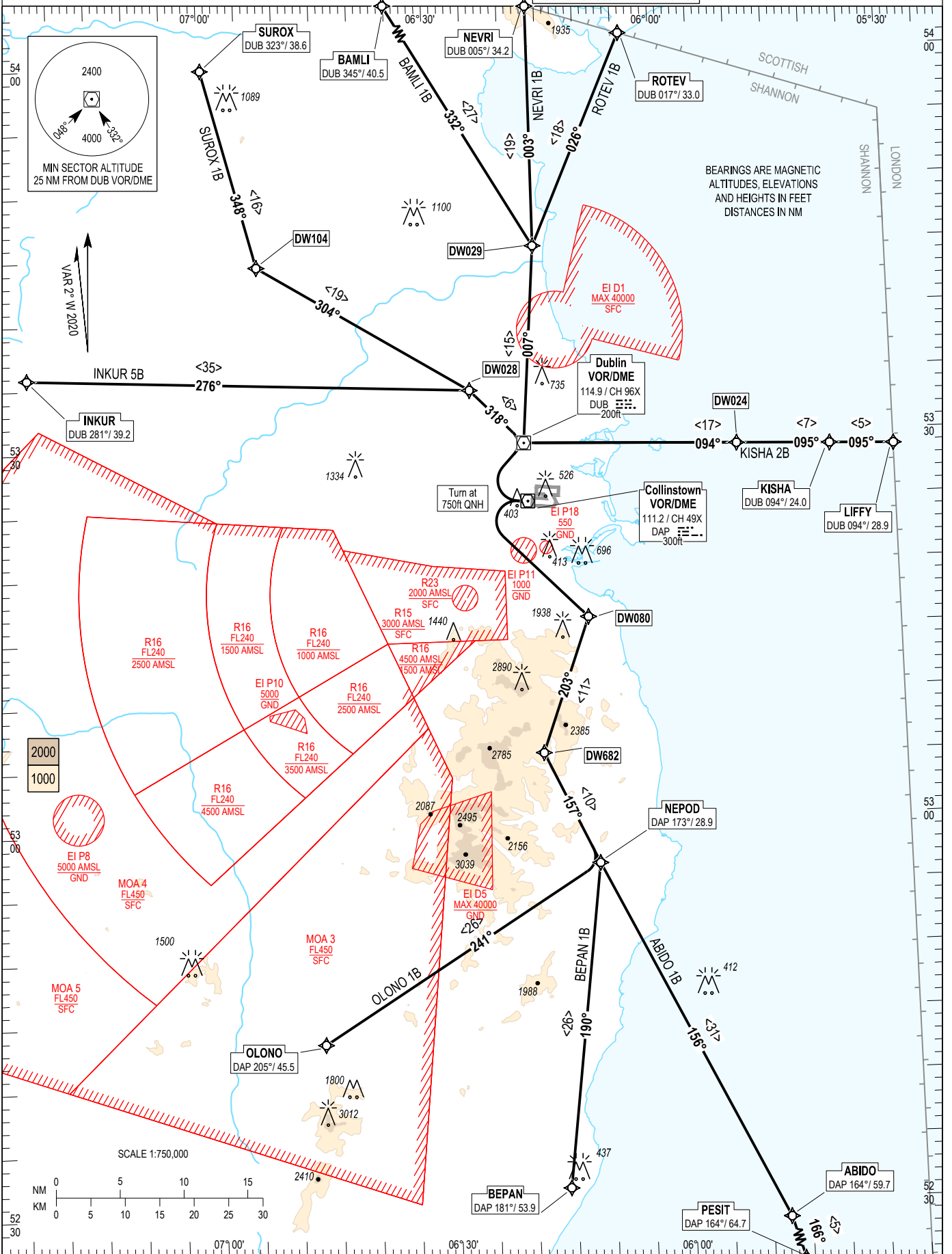
TRANS ALT 5000ft
TRANS LEVEL by ATC

ATIS	124.530
TWR	118.600
ACC Lower North	132.580
ACC Lower South	120.755

DUBLIN RWY 28L, CAT A, B

KISHA 2B, ABIDO 1B, BEPAN 1B, OLONO 1B,
INKUR 5B, SUROX 1B, BAMLI 1B, NEVRI 1B, ROTEV 1B

CHANGE: MSA, MAG VAR, Alfa-Numeric WPTs renamed, DW024 added on KISHA, KISHA 2B Route Validity Indicator, Notes, Chart Title, Chart numbering, Frequencies, MSA tracks and MEF figures & grid lines, Obstacle heights.



NOTES: 1. Climb gradient 6.6 % (400 ft/NM) (4% for obstacle clearance). 2. Turn above 750ft QNH (No turns before the DER). 3. MAX IAS 250kts below FL100. 4. Integrity check fix available from RADAR. 5. Immediately after take off contact Dublin Departure North or South as appropriate. 6. KISHA SID traffic with a RFL of FL180 or above must be FL180 by BAVUD or GINIS respectively. 7. DME/DME or GNSS navigation required. 8. **WARNING:** Climb to 4000 ft. Do not climb above 4000 ft until instructed by ATC.

ABIDO1B CAT A/B SID RWY28L

ABID1B

Nav. Spec.	WPT Name	Latitude (N)/ Longitude (W)	Path Term	Fly-By Fly-over	True track / Mag track	Distance (NM)	Upper limit / Lower limit (ft)	Speed Limit (kts)	Remarks
RNAV1	RWY28	-	CA	-	275.2 / 278	-	- / A750+	-	-
RNAV1	DW080	531613.0 / 0061050.0	DF	Fly-By	-	-	-	-	Turn L
RNAV1	DW682	530541.9 / 0061715.9	TF	Fly-By	200.2 / 203	11.2	-	-	Turn R
RNAV1	NEPOD	525657.2 / 0061029.8	TF	Fly-By	154.9 / 157	9.7	-	-	Turn L
RNAV1	ABIDO	522843.7 / 0054744.1	TF	Fly-By	153.8 / 156	31.5	-	-	-
RNAV1	PESIT	522356.6 / 0054524.0	TF	Fly-By	163.4 / 166	5.0	A4000 / -	-	Turn R

BAMLI1B CAT A/B SID RWY28L

BAML1B

Nav. Spec.	WPT Name	Latitude (N)/ Longitude (W)	Path Term	Fly-By Fly-over	True track / Mag track	Distance (NM)	Upper limit / Lower limit (ft)	Speed Limit (kts)	Remarks
RNAV1	RWY28	-	CA	-	275.2 / 278	-	- / A750+	-	-
RNAV1	DUB	532957.8 / 0061825.6	DF	Fly-By	-	-	-	-	Turn R , VOR
RNAV1	DW029	534521.0 / 0061621.0	TF	Fly-By	004.6 / 007	15.5	-	-	-
RNAV1	BAMLI	540828.5 / 0063904.0	TF	Fly-By	330.1 / 332	26.8	A4000 / -	-	Turn L

BEPAN1B CAT A/B SID RWY28L

BEPA1B

Nav. Spec.	WPT Name	Latitude (N)/ Longitude (W)	Path Term	Fly-By Fly-over	True track / Mag track	Distance (NM)	Upper limit / Lower limit (ft)	Speed Limit (kts)	Remarks
RNAV1	RWY28	-	CA	-	275.2 / 278	-	- / A750+	-	-
RNAV1	DW080	531613.0 / 0061050.0	DF	Fly-By	-	-	-	-	Turn L
RNAV1	DW682	530541.9 / 0061715.9	TF	Fly-By	200.2 / 203	11.2	-	-	Turn R
RNAV1	NEPOD	525657.2 / 0061029.8	TF	Fly-By	154.9 / 157	9.7	-	-	Turn L
RNAV1	BEPAN	523136.2 / 0061549.5	TF	Fly-By	187.3 / 190	25.6	A4000 / -	-	Turn R

INKUR5B CAT A/B SID RWY28L

INKU5B

Nav. Spec.	WPT Name	Latitude (N)/ Longitude (W)	Path Term	Fly-By Fly-over	True track / Mag track	Distance (NM)	Upper limit / Lower limit (ft)	Speed Limit (kts)	Remarks
RNAV1	RWY28	-	CA	-	275.2 / 278	-	- / A750+	-	-
RNAV1	DUB	532957.8 / 0061825.6	DF	Fly-By	-	-	-	-	Turn R , VOR
RNAV1	DW028	533413.0 / 0062520.0	TF	Fly-By	316.0 / 318	5.9	-	-	-
RNAV1	INKUR	533551.3 / 0072328.6	TF	Fly-By	273.1 / 276	34.7	A3000 / -	-	Turn L

KISHA2B CAT A/B SID RWY28L

KISH2B

Nav. Spec.	WPT Name	Latitude (N)/ Longitude (W)	Path Term	Fly-By Fly-over	True track / Mag track	Distance (NM)	Upper limit / Lower limit (ft)	Speed Limit (kts)	Remarks
RNAV1	RWY28	-	CA	-	275.2 / 278	-	- / A750+	-	-
RNAV1	DUB	532957.8 / 0061825.6	DF	Fly-By	-	-	-	-	Turn R , VOR
RNAV1	DW024	532920.2 / 0055032.5	TF	Fly-By	092.0 / 094	16.7	-	-	-
RNAV1	KISHA	532901.7 / 0053821.6	TF	Fly-By	092.3 / 095	7.3	-	-	-
RNAV1	LIFFY	532848.3 / 0053000.0	TF	Fly-By	092.6 / 095	5.0	A4000 / -	-	-

NEVRI1B CAT A/B SID RWY28L

NEVR1B

Nav. Spec.	WPT Name	Latitude (N)/ Longitude (W)	Path Term	Fly-By Fly-over	True track / Mag track	Distance (NM)	Upper limit / Lower limit (ft)	Speed Limit (kts)	Remarks
RNAV1	RWY28	-	CA	-	275.2 / 278	-	- / A750+	-	-
RNAV1	DUB	532957.8 / 0061825.6	DF	Fly-By	-	-	-	-	Turn R , VOR
RNAV1	DW029	534521.0 / 0061621.0	TF	Fly-By	004.6 / 007	15.5	-	-	-
RNAV1	NEVRI	540406.0 / 0061611.4	TF	Fly-By	000.3 / 003	18.8	A4000 / -	-	Turn L

OLONO1B CAT A/B SID RWY28L

OLON1B

Nav. Spec.	WPT Name	Latitude (N)/ Longitude (W)	Path Term	Fly-By Fly-over	True track / Mag track	Distance (NM)	Upper limit / Lower limit (ft)	Speed Limit (kts)	Remarks
RNAV1	RWY28	-	CA	-	275.2 / 278	-	- / A750+	-	-
RNAV1	DW080	531613.0 / 0061050.0	DF	Fly-By	-	-	-	-	Turn L
RNAV1	DW682	530541.9 / 0061715.9	TF	Fly-By	200.2 / 203	11.2	-	-	Turn R
RNAV1	NEPOD	525657.2 / 0061029.8	TF	Fly-By	154.9 / 157	9.7	-	-	Turn L
RNAV1	OLONO	524323.1 / 0064644.4	TF	Fly-By	238.5 / 241	25.8	A4000 / -	-	Turn R

ROTEV1B CAT A/B SID RWY28L

ROTE1B

Nav. Spec.	WPT Name	Latitude (N)/ Longitude (W)	Path Term	Fly-By Fly-over	True track / Mag track	Distance (NM)	Upper limit / Lower limit (ft)	Speed Limit (kts)	Remarks
RNAV1	RWY28	-	CA	-	275.2 / 278	-	- / A750+	-	-
RNAV1	DUB	532957.8 / 0061825.6	DF	Fly-By	-	-	-	-	Turn R , VOR
RNAV1	DW029	534521.0 / 0061621.0	TF	Fly-By	004.6 / 007	15.5	-	-	-
RNAV1	ROTEV	540143.7 / 0060358.4	TF	Fly-By	024.0 / 026	18.0	A4000 / -	-	Turn R

SUROX1B CAT A/B SID RWY28L

SURO1B

Nav. Spec.	WPT Name	Latitude (N)/ Longitude (W)	Path Term	Fly-By Fly-over	True track / Mag track	Distance (NM)	Upper limit / Lower limit (ft)	Speed Limit (kts)	Remarks
RNAV1	RWY28	-	CA	-	275.2 / 278	-	- / A750+	-	-
RNAV1	DUB	532957.8 / 0061825.6	DF	Fly-By	-	-	-	-	Turn R , VOR
RNAV1	DW028	533413.0 / 0062520.0	TF	Fly-By	316.0 / 318	5.9	-	-	-
RNAV1	DW104	534417.9 / 0065252.9	TF	Fly-By	301.8 / 304	19.3	-	-	Turn L
RNAV1	SUROX	535948.0 / 0065936.5	TF	Fly-By	345.7 / 348	16.0	A4000 / -	-	Turn R