

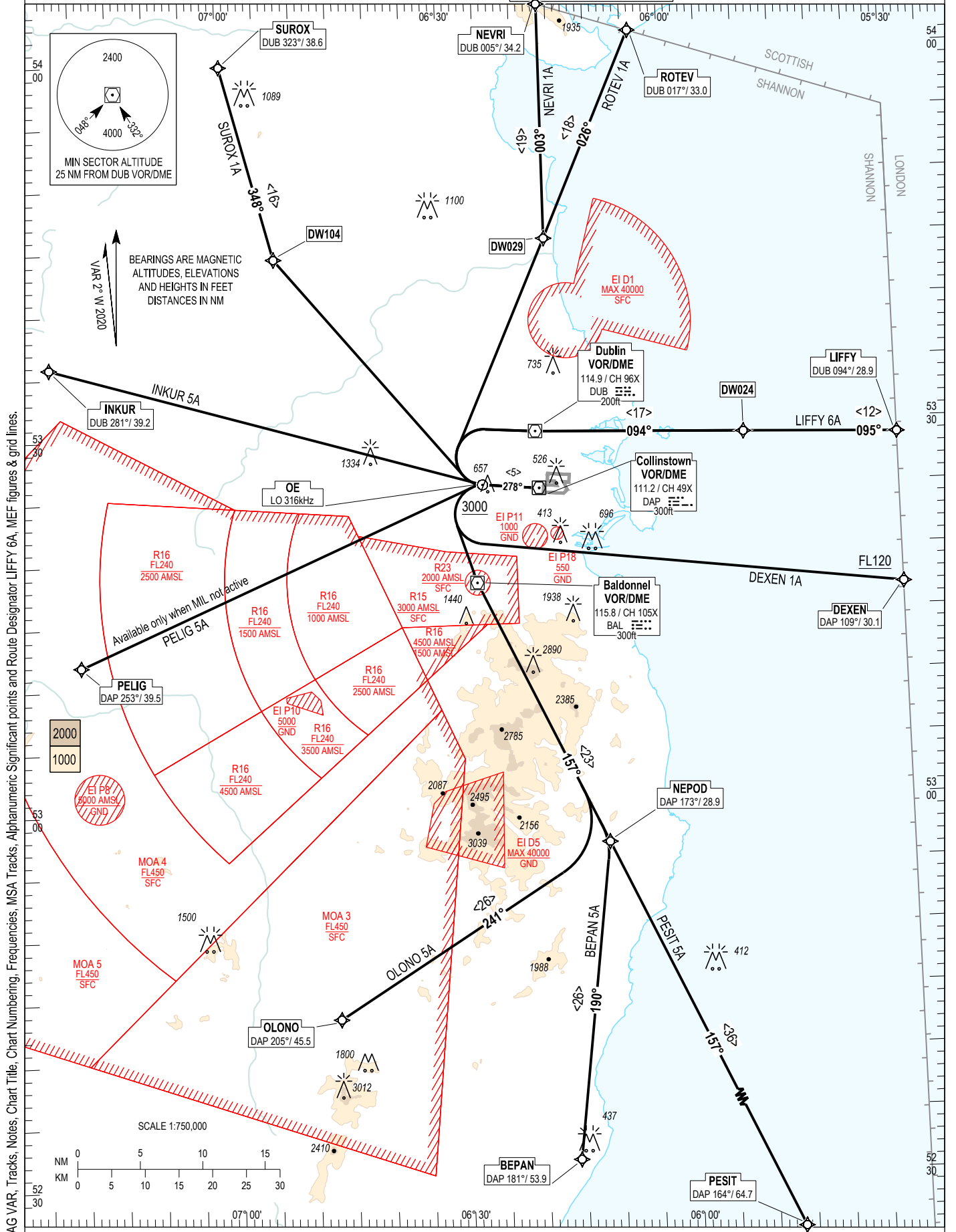
RNAV STANDARD DEPARTURE CHART
INSTRUMENT (SID) - ICAO

TRANS ALT 5000ft
TRANS LEVEL by ATC

ATIS	124.530
TWR	118.600
ACC Lower North	132.580
ACC Lower South	120.755

DUBLIN RWY 28L, CAT C, D

LIFFY 6A, DEXEN 1A, PESIT 5A, BEPAN 5A, OLONO 5A,
PELIG 5A, INKUR 5A, SUROX 1A, NEVRI 1A, ROTEV 1A.



CHANGE: MAG VAR, Tracks, Chart Numbering, Frequencies, MSA Tracks, Alphabetic Significant points and Route Designator: LIFFY 6A, MEF figures & grid lines.

NOTES: 1. Climb gradient 9.1% (550 ft/NM) (4% for obstacle clearance). 2. MAX IAS 250kts below FL100. 3. For LIFFY and DEXEN MAX IAS: 290kts above FL100. 4. Integrity check fix available from RADAR. 5. On passing 2000ft contact Dublin Departure North or South as appropriate. 6. DME/DME or GNSS navigation required. 7. Climb to FL90. Do not climb above FL90 until instructed by ATC. 8. For DEXEN SID FL200 required by LUTIP. 9. Continuous climb to 4000ft (9.1% 550ft/NM) required on PESIT, BEPAN, OLONO, DEXEN for separation from military operations at 3000ft in R15. 10. LIFFY SID traffic with a RFL of FL180 or above must be FL180 by BAVUD, GINIS or ABGEP respectively.

BEPAN5A CAT C/D SID RWY28L

BEPA5A

Nav. Spec.	WPT Name	Latitude (N)/ Longitude (W)	Path Term	Fly-By Fly-over	True track / Mag track	Distance (NM)	Upper limit / Lower limit (ft)	Speed Limit (kts)	Remarks
RNAV1	OE	532548.6 / 0062543.7	CF	Fly-Over	275.4 / 278	-	- / A3000	-	LO
RNAV1	BAL	531759.6 / 0062652.0	DF	Fly-By	-	-	-	-	Turn L , VOR
RNAV1	NEPOD	525657.2 / 0061029.8	TF	Fly-By	154.8 / 157	23.3	-	-	-
RNAV1	BEPAN	523136.2 / 0061549.5	TF	Fly-By	187.3 / 190	25.6	-	-	Turn R

DEXEN1A CAT C/D SID RWY28L

DEXE1A

Nav. Spec.	WPT Name	Latitude (N)/ Longitude (W)	Path Term	Fly-By Fly-over	True track / Mag track	Distance (NM)	Upper limit / Lower limit (ft)	Speed Limit (kts)	Remarks
RNAV1	OE	532548.6 / 0062543.7	CF	Fly-Over	275.4 / 278	-	- / A3000	-	LO
RNAV1	DEXEN	531649.4 / 0053000.0	DF	Fly-By	-	-	- / FL120	-	Turn L

INKUR5A CAT C/D SID RWY28L

INKU5A

Nav. Spec.	WPT Name	Latitude (N)/ Longitude (W)	Path Term	Fly-By Fly-over	True track / Mag track	Distance (NM)	Upper limit / Lower limit (ft)	Speed Limit (kts)	Remarks
RNAV1	OE	532548.6 / 0062543.7	CF	Fly-Over	275.4 / 278	-	- / A3000	-	LO
RNAV1	INKUR	533551.3 / 0072328.6	DF	Fly-By	-	-	-	-	Turn R

LIFFY6A CAT C/D SID RWY28L

LIFF6A

Nav. Spec.	WPT Name	Latitude (N)/ Longitude (W)	Path Term	Fly-By Fly-over	True track / Mag track	Distance (NM)	Upper limit / Lower limit (ft)	Speed Limit (kts)	Remarks
RNAV1	OE	532548.6 / 0062543.7	CF	Fly-Over	275.4 / 278	-	- / A3000	-	LO
RNAV1	DUB	532957.8 / 0061825.6	DF	Fly-By	-	-	-	-	Turn R , VOR
RNAV1	DW024	532920.2 / 0055032.5	TF	Fly-By	092.0 / 094	16.7	-	-	-
RNAV1	LIFFY	532848.3 / 0053000.0	TF	Fly-By	092.3 / 095	12.3	-	-	-

NEVRI1A CAT C/D SID RWY28L

NEVR1A

Nav. Spec.	WPT Name	Latitude (N)/ Longitude (W)	Path Term	Fly-By Fly-over	True track / Mag track	Distance (NM)	Upper limit / Lower limit (ft)	Speed Limit (kts)	Remarks
RNAV1	OE	532548.6 / 0062543.7	CF	Fly-Over	275.4 / 278	-	- / A3000	-	LO
RNAV1	DW029	534521.0 / 0061621.0	DF	Fly-By	-	-	-	-	Turn R
RNAV1	NEVRI	540406.0 / 0061611.4	TF	Fly-By	000.3 / 003	18.8	-	-	-

OLONO5A CAT C/D SID RWY28L

OLON5A

Nav. Spec.	WPT Name	Latitude (N)/ Longitude (W)	Path Term	Fly-By Fly-over	True track / Mag track	Distance (NM)	Upper limit / Lower limit (ft)	Speed Limit (kts)	Remarks
RNAV1	OE	532548.6 / 0062543.7	CF	Fly-Over	275.4 / 278	-	- / A3000	-	LO
RNAV1	BAL	531759.6 / 0062652.0	DF	Fly-By	-	-	-	-	Turn L , VOR
RNAV1	NEPOD	525657.2 / 0061029.8	TF	Fly-By	154.8 / 157	23.3	-	-	-
RNAV1	OLONO	524323.1 / 0064644.4	TF	Fly-By	238.5 / 241	25.8	-	-	Turn R

PELIG5A CAT C/D SID RWY28L

PELI5A

Nav. Spec.	WPT Name	Latitude (N)/ Longitude (W)	Path Term	Fly-By Fly-over	True track / Mag track	Distance (NM)	Upper limit / Lower limit (ft)	Speed Limit (kts)	Remarks
RNAV1	OE	532548.6 / 0062543.7	CF	Fly-Over	275.4 / 278	-	- / A3000	-	LO
RNAV1	PELIG	531158.5 / 0072000.0	DF	Fly-By	-	-	-	-	Turn L

PESIT5A CAT C/D SID RWY28L

PESI5A

Nav. Spec.	WPT Name	Latitude (N)/ Longitude (W)	Path Term	Fly-By Fly-over	True track / Mag track	Distance (NM)	Upper limit / Lower limit (ft)	Speed Limit (kts)	Remarks
RNAV1	OE	532548.6 / 0062543.7	CF	Fly-Over	275.4 / 278	-	- / A3000	-	LO
RNAV1	BAL	531759.6 / 0062652.0	DF	Fly-By	-	-	-	-	Turn L , VOR
RNAV1	NEPOD	525657.2 / 0061029.8	TF	Fly-By	154.8 / 157	23.3	-	-	-
RNAV1	PESIT	522356.6 / 0054524.0	TF	Fly-By	155.0 / 157	36.4	-	-	-

ROTEV1A CAT C/D SID RWY28L

ROTE1A

Nav. Spec.	WPT Name	Latitude (N)/ Longitude (W)	Path Term	Fly-By Fly-over	True track / Mag track	Distance (NM)	Upper limit / Lower limit (ft)	Speed Limit (kts)	Remarks
RNAV1	OE	532548.6 / 0062543.7	CF	Fly-Over	275.4 / 278	-	- / A3000	-	LO
RNAV1	DW029	534521.0 / 0061621.0	DF	Fly-By	-	-	-	-	Turn R
RNAV1	ROTEV	540143.7 / 0060358.4	TF	Fly-By	024.0 / 026	18.0	-	-	-

SUROX1A CAT C/D SID RWY28L

SURO1A

Nav. Spec.	WPT Name	Latitude (N)/ Longitude (W)	Path Term	Fly-By Fly-over	True track / Mag track	Distance (NM)	Upper limit / Lower limit (ft)	Speed Limit (kts)	Remarks
RNAV1	OE	532548.6 / 0062543.7	CF	Fly-Over	275.4 / 278	-	- / A3000	-	LO
RNAV1	DW104	534417.9 / 0065252.9	DF	Fly-By	-	-	-	-	Turn R
RNAV1	SUROX	535948.0 / 0065936.5	TF	Fly-By	345.7 / 348	16.0	-	-	-