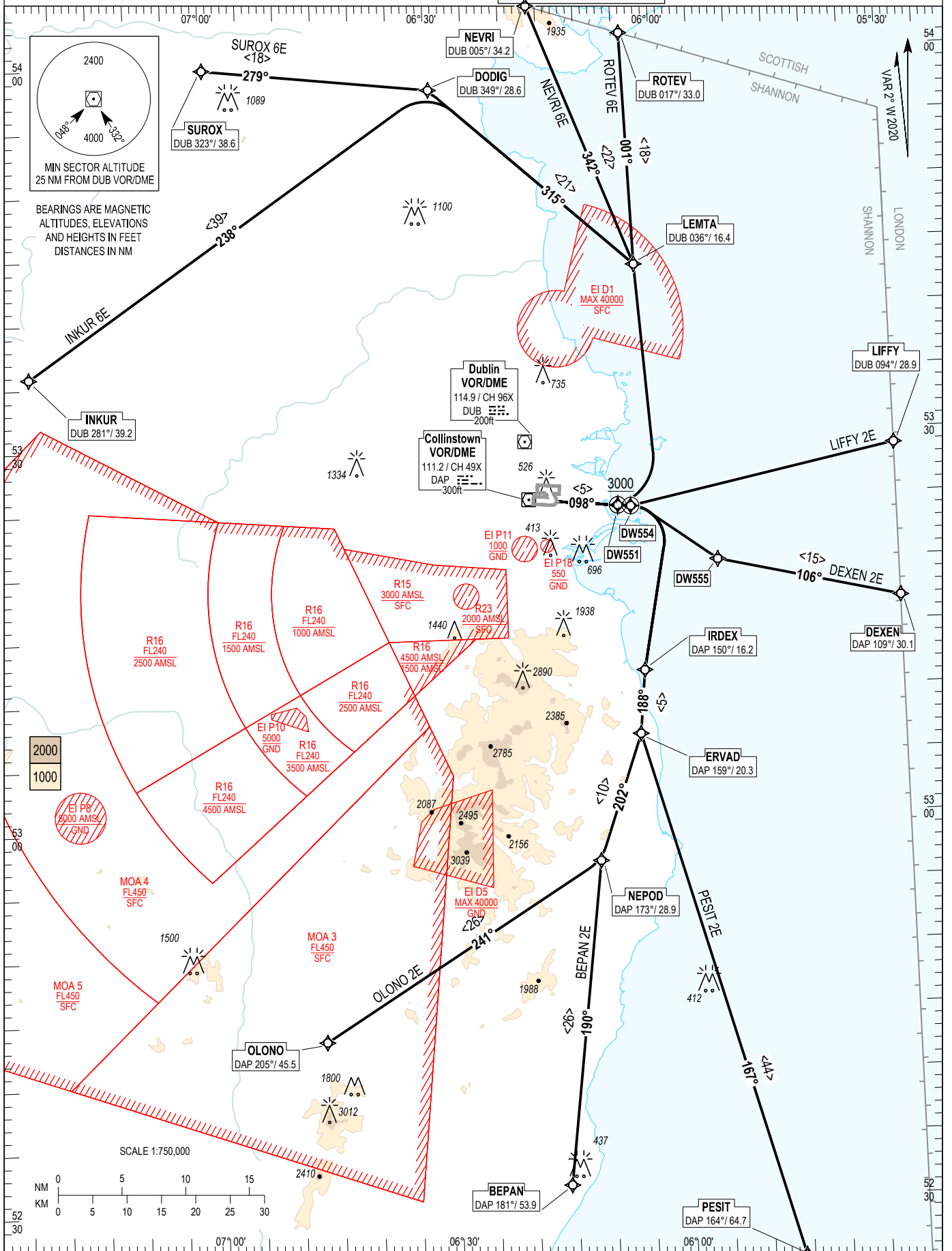


RNAV STANDARD DEPARTURE CHART
INSTRUMENT (SID) - ICAO

TRANS ALT 5000ft
TRANS LEVEL by ATC

ATIS	124.530
TWR	118.600
ACC Lower North	132.580
ACC Lower South	120.755

DUBLIN RWY 10R, CAT C, D
LIFFY 2E, DEXEN 2E, PESIT 2E, BEPAN 2E, OLONO 2E,
INKUR 6E, SUROX 6E, NEVRI 6E, ROTEV 6E.



CHANGE: MAG VAR, Tracks, Notes, Chart Numbering, Frequencies and MSA Tracks, MEF figures & grid lines.

- NOTES:** 1. Climb gradient 9.1 % (550 ft/NM) (3.3% for obstacle clearance). 2. Close-in obstacles exist. 3. MAX IAS 250kts below FL100. 4. Integrity check fix available from RADAR. 5. On passing 2000ft contact Dublin Departure North or South as appropriate. 6. LIFFY SID traffic with a RFL of FL180 or above must be FL180 by BAVUD, GINIS or ABGEP respectively. 7. DME/DME or GNSS navigation required. 8. For LIFFY and DEXEN MAX IAS: 290kts above FL100. 9. DEXEN - Aircraft must be FL200 or above by LUTIP. 10. Climb to FL90. Do not climb above FL90 until instructed by ATC.

BEPAN2E CAT C/D SID RWY10R
BEPA2E

Nav. Spec.	WPT Name	Latitude (N)/ Longitude (W)	Path Term	Fly-By Fly-over	True track / Mag track	Distance (NM)	Upper limit / Lower limit	Speed Limit (kts)	Remarks
RNAV1	DW554	532438.8 / 0060451.6	CF	Fly-Over	095.3 / 098	-	- / A3000	-	098° DAP / D8.0 DAP
RNAV1	IRDEX	531145.1 / 0060350.1	DF	Fly-By	-	-	-	-	Turn R
RNAV1	ERVAD	530647.1 / 0060440.4	TF	Fly-By	185.8 / 188	5.0	-	-	-
RNAV1	NEPOD	525657.2 / 0061029.8	TF	Fly-By	199.7 / 202	10.5	-	-	Turn R
RNAV1	BEPAN	523136.2 / 0061549.5	TF	Fly-By	187.3 / 190	25.6	-	-	Turn L

DEXEN2E CAT C/D SID RWY10R
DEXE2E

Nav. Spec.	WPT Name	Latitude (N)/ Longitude (W)	Path Term	Fly-By Fly-over	True track / Mag track	Distance (NM)	Upper limit / Lower limit	Speed Limit (kts)	Remarks
RNAV1	DW554	532438.8 / 0060451.6	CF	Fly-Over	095.3 / 098	-	- / A3000	-	098° DAP / D8.0 DAP
RNAV1	DW555	532013.7 / 0055344.0	DF	Fly-By	-	-	-	-	Turn R
RNAV1	DEXEN	531649.4 / 0053000.0	TF	Fly-By	103.3 / 106	14.6	-	-	-

INKUR6E CAT C/D SID RWY10R
INKU6E

Nav. Spec.	WPT Name	Latitude (N)/ Longitude (W)	Path Term	Fly-By Fly-over	True track / Mag track	Distance (NM)	Upper limit / Lower limit	Speed Limit (kts)	Remarks
RNAV1	DW551	532444.5 / 0060631.4	CF	Fly-Over	095.3 / 098	-	- / A3000	-	098° DAP / D7.0 DAP
RNAV1	LEMTA	534334.3 / 0060311.6	DF	Fly-By	-	-	-	-	Turn L
RNAV1	DODIG	535746.0 / 0062934.0	TF	Fly-By	312.5 / 315	21.1	-	-	-
RNAV1	INKUR	533551.3 / 0072328.6	TF	Fly-By	235.9 / 238	38.8	-	-	Turn L

LIFFY2E CAT C/D SID RWY10R
LIF2E

Nav. Spec.	WPT Name	Latitude (N)/ Longitude (W)	Path Term	Fly-By Fly-over	True track / Mag track	Distance (NM)	Upper limit / Lower limit	Speed Limit (kts)	Remarks
RNAV1	DW551	532444.5 / 0060631.4	CF	Fly-Over	095.3 / 098	-	- / A3000	-	098° DAP / D7.0 DAP
RNAV1	LIFFY	532848.3 / 0053000.0	DF	Fly-By	-	-	-	-	Turn L

NEVRI6E CAT C/D SID RWY10R
NEVR6E

Nav. Spec.	WPT Name	Latitude (N)/ Longitude (W)	Path Term	Fly-By Fly-over	True track / Mag track	Distance (NM)	Upper limit / Lower limit	Speed Limit (kts)	Remarks
RNAV1	DW551	532444.5 / 0060631.4	CF	Fly-Over	095.3 / 098	-	- / A3000	-	098° DAP / D7.0 DAP
RNAV1	LEMTA	534334.3 / 0060311.6	DF	Fly-By	-	-	-	-	Turn L
RNAV1	NEVRI	540406.0 / 0061611.4	TF	Fly-By	339.6 / 342	22.0	-	-	-

OLONO2E CAT C/D SID RWY10R
OLON2E

Nav. Spec.	WPT Name	Latitude (N)/ Longitude (W)	Path Term	Fly-By Fly-over	True track / Mag track	Distance (NM)	Upper limit / Lower limit	Speed Limit (kts)	Remarks
RNAV1	DW554	532438.8 / 0060451.6	CF	Fly-Over	095.3 / 098	-	- / A3000	-	098° DAP / D8.0 DAP
RNAV1	IRDEX	531145.1 / 0060350.1	DF	Fly-By	-	-	-	-	Turn R
RNAV1	ERVAD	530647.1 / 0060440.4	TF	Fly-By	185.8 / 188	5.0	-	-	-
RNAV1	NEPOD	525657.2 / 0061029.8	TF	Fly-By	199.7 / 202	10.5	-	-	Turn R
RNAV1	OLONO	524323.1 / 0064644.4	TF	Fly-By	238.5 / 241	25.8	-	-	Turn R

PESIT2E CAT C/D SID RWY10R

PESI2E

Nav. Spec.	WPT Name	Latitude (N)/ Longitude (W)	Path Term	Fly-By Fly-over	True track / Mag track	Distance (NM)	Upper limit / Lower limit	Speed Limit (kts)	Remarks
RNAV1	DW554	532438.8 / 0060451.6	CF	Fly-Over	095.3 / 098	-	- / A3000	-	098° DAP / D8.0 DAP
RNAV1	IRDEX	531145.1 / 0060350.1	DF	Fly-By	-	-	-	-	Turn R
RNAV1	ERVAD	530647.1 / 0060440.4	TF	Fly-By	185.8 / 188	5.0	-	-	-
RNAV1	PESIT	522356.6 / 0054524.0	TF	Fly-By	164.6 / 167	44.5	-	-	Turn L

ROTEV6E CAT C/D SID RWY10R

ROTE6E

Nav. Spec.	WPT Name	Latitude (N)/ Longitude (W)	Path Term	Fly-By Fly-over	True track / Mag track	Distance (NM)	Upper limit / Lower limit	Speed Limit (kts)	Remarks
RNAV1	DW551	532444.5 / 0060631.4	CF	Fly-Over	095.3 / 098	-	- / A3000	-	098° DAP / D7.0 DAP
RNAV1	LEMTA	534334.3 / 0060311.6	DF	Fly-By	-	-	-	-	Turn L
RNAV1	ROTEV	540143.7 / 0060358.4	TF	Fly-By	358.6 / 001	18.2	-	-	-

SUROX6E CAT C/D SID RWY10R

SURO6E

Nav. Spec.	WPT Name	Latitude (N)/ Longitude (W)	Path Term	Fly-By Fly-over	True track / Mag track	Distance (NM)	Upper limit / Lower limit	Speed Limit (kts)	Remarks
RNAV1	DW551	532444.5 / 0060631.4	CF	Fly-Over	Turn 5095.3 / 098	-	- / A3000	--	098° DAP / D7.0 DAP
RNAV1	LEMTA	534334.3 / 0060311.6	DF	Fly-By	-	-	-	-	Turn L
RNAV1	DODIG	535746.0 / 0062934.0	TF	Fly-By	312.5 / 315	21.1	-	-	-
RNAV1	SUROX	535948.0 / 0065936.5	TF	Fly-By	276.8 / 279	17.9	-	-	Turn L