

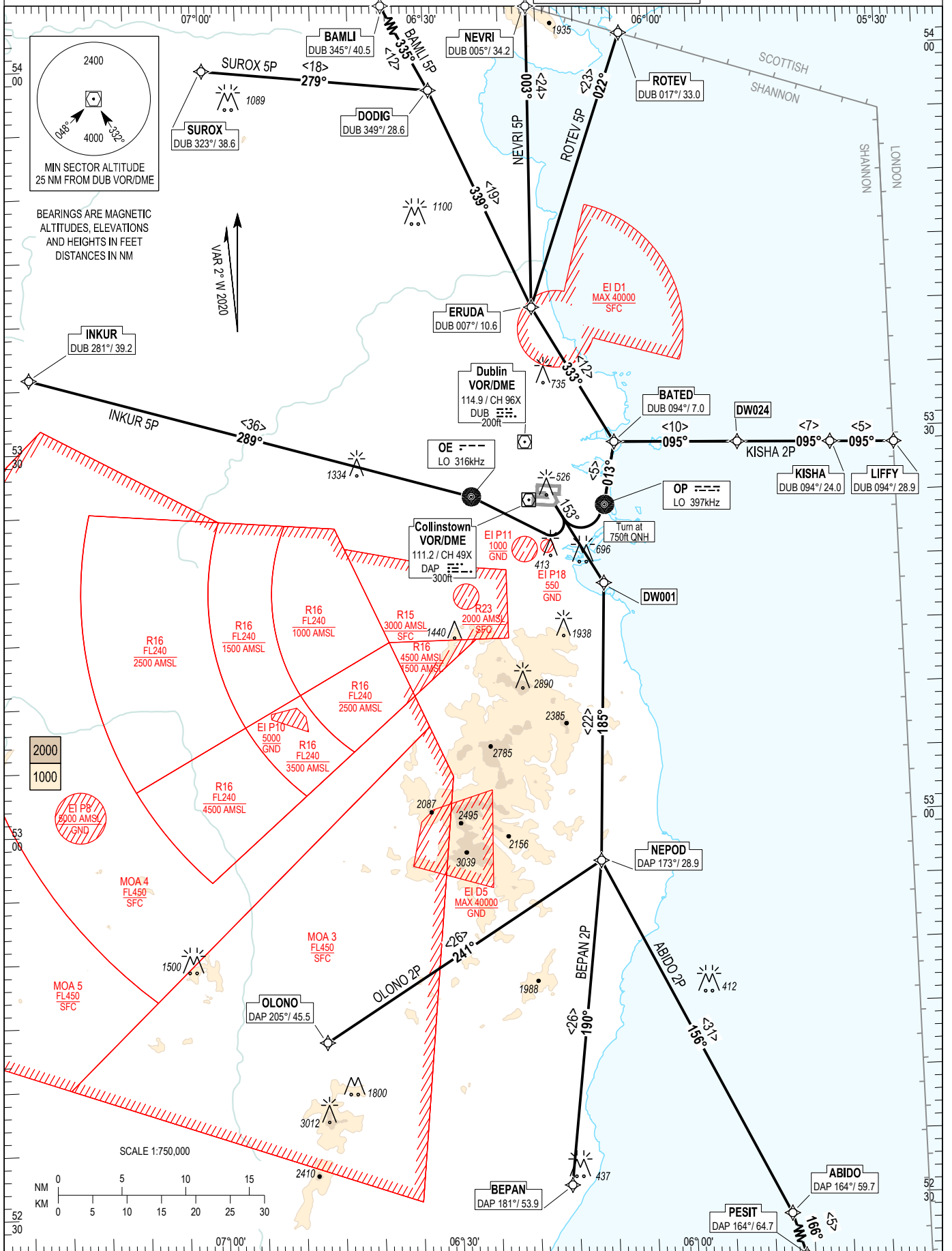
RNAV STANDARD DEPARTURE CHART
INSTRUMENT (SID) - ICAO

TRANS ALT 5000ft
TRANS LEVEL by ATC

| | |
|-----------------|---------|
| ATIS TWR | 124.530 |
| ACC Lower North | 118.600 |
| ACC Lower South | 132.580 |
| | 120.755 |

DUBLIN RWY 16, CAT A, B

KISHA 2P, ABIDO 2P, BEPAN 2P, OLONO 2P,
INKUR 5P, SUROX 5P, BAMLI 5P, NEVRI 5P, ROTEV 5P.



CHANGE: MAG VAR, Alfa-Numeric DW024 added on KISHA 2P, KISHA 2P Route Validity Indicator, Notes, Chart Numbering, MSA Tracks and MEF figures & grid lines, Obstacle heights.

NOTES: 1. Climb gradient 6.6 % (400 ft/NM) (3.3% for obstacle clearance). 2. MAX IAS 250kts below FL100. 3. If fix data for integrity checking not available for referenced VOR/DME request check fix from RADAR. 4. Immediately after take off contact Dublin Departure North or South as appropriate. 5. KISHA SID traffic with a RFL of FL180 or above must be FL180 by BAVUD or GINIS respectively. 6. DME/DME or GNSS navigation required. 7. Close-in obstacles exist. 8. Turn above 750ft QNH (No turns before the DER). 9. WARNING: Climb to 4000ft. Do not climb above 4000ft until instructed by ATC.

ABIDO2P CAT A/B SID RWY16

ABID2P

| Nav. Spec. | WPT Name | Latitude (N)/ Longitude (W) | Path Term | Fly-By Fly-over | True track / Mag track | Distance (NM) | Upper limit / Lower limit | Speed Limit (kts) | Remarks |
|------------|----------|-----------------------------|-----------|-----------------|------------------------|---------------|---------------------------|-------------------|---------------------|
| RNAV1 | RWY16 | - | CA | - | 150.2 / 153 | - | - / A750+ | - | - |
| RNAV1 | DW001 | 531841.3 / 0060846.5 | CF | Fly-By | 150.2 / 153 | - | - | - | 142° DAP / D8.8 DAP |
| RNAV1 | NEPOD | 525657.2 / 0061029.8 | TF | Fly-By | 182.7 / 185 | 21.8 | - | - | Turn R |
| RNAV1 | ABIDO | 522843.7 / 0054744.1 | TF | Fly-By | 153.8 / 156 | 31.5 | - | - | Turn L |
| RNAV1 | PESIT | 522356.6 / 0054524.0 | TF | Fly-By | 163.4 / 166 | 5.0 | A4000 / - | - | Turn R |

BAMLI5P CAT A/B SID RWY16

BAML5P

| Nav. Spec. | WPT Name | Latitude (N)/ Longitude (W) | Path Term | Fly-By Fly-over | True track / Mag track | Distance (NM) | Upper limit / Lower limit | Speed Limit (kts) | Remarks |
|------------|----------|-----------------------------|-----------|-----------------|------------------------|---------------|---------------------------|-------------------|-------------|
| RNAV1 | RWY16 | - | CA | - | 150.2 / 153 | - | - / A750+ | - | - |
| RNAV1 | OP | 532449.7 / 0060818.1 | DF | Fly-By | - | - | - | - | Turn L , LO |
| RNAV1 | BATED | 532942.8 / 0060642.8 | TF | Fly-By | 011.0 / 013 | 5.0 | - | - | - |
| RNAV1 | ERUDA | 534029.0 / 0061655.0 | TF | Fly-By | 330.7 / 333 | 12.4 | - | - | Turn L |
| RNAV1 | DODIG | 535746.0 / 0062934.0 | TF | Fly-By | 336.7 / 339 | 18.9 | - | - | Turn R |
| RNAV1 | BAMLI | 540828.5 / 0063904.0 | TF | Fly-By | 332.5 / 335 | 12.1 | A4000 / - | - | Turn L |

BEPAN2P CAT A/B SID RWY16

BEPA2P

| Nav. Spec. | WPT Name | Latitude (N)/ Longitude (W) | Path Term | Fly-By Fly-over | True track / Mag track | Distance (NM) | Upper limit / Lower limit | Speed Limit (kts) | Remarks |
|------------|----------|-----------------------------|-----------|-----------------|------------------------|---------------|---------------------------|-------------------|---------------------|
| RNAV1 | RWY16 | - | CA | - | 150.2 / 153 | - | - / A750+ | - | - |
| RNAV1 | DW001 | 531841.3 / 0060846.5 | CF | Fly-By | 150.2 / 153 | - | - | - | 142° DAP / D8.8 DAP |
| RNAV1 | NEPOD | 525657.2 / 0061029.8 | TF | Fly-By | 182.7 / 185 | 21.8 | - | - | Turn R |
| RNAV1 | BEPAN | 523136.2 / 0061549.5 | TF | Fly-By | 187.3 / 190 | 25.6 | A4000 / - | - | Turn R |

INKUR5P CAT A/B SID RWY16

INKU5P

| Nav. Spec. | WPT Name | Latitude (N)/ Longitude (W) | Path Term | Fly-By Fly-over | True track / Mag track | Distance (NM) | Upper limit / Lower limit | Speed Limit (kts) | Remarks |
|------------|----------|-----------------------------|-----------|-----------------|------------------------|---------------|---------------------------|-------------------|-------------|
| RNAV1 | RWY16 | - | CA | - | 150.2 / 153 | - | - / A750+ | - | - |
| RNAV1 | OE | 532548.6 / 0062543.7 | DF | Fly-By | - | - | - | - | Turn R , LO |
| RNAV1 | INKUR | 533551.3 / 0072328.6 | TF | Fly-By | 286.7 / 289 | 35.9 | A4000 / - | - | Turn L |

KISHA2P CAT A/B SID RWY16

KISH2P

| Nav. Spec. | WPT Name | Latitude (N)/ Longitude (W) | Path Term | Fly-By Fly-over | True track / Mag track | Distance (NM) | Upper limit / Lower limit | Speed Limit (kts) | Remarks |
|------------|----------|-----------------------------|-----------|-----------------|------------------------|---------------|---------------------------|-------------------|-------------|
| RNAV1 | RWY16 | - | CA | - | 150.2 / 153 | - | - / A750+ | - | - |
| RNAV1 | OP | 532449.7 / 0060818.1 | DF | Fly-By | - | - | - | - | Turn L , LO |
| RNAV1 | BATED | 532942.8 / 0060642.8 | TF | Fly-By | 011.0 / 013 | 5.0 | - | - | - |
| RNAV1 | DW024 | 532920.2 / 0055032.5 | TF | Fly-By | 092.1 / 095 | 9.7 | - | - | Turn R |
| RNAV1 | KISHA | 532901.7 / 0053821.6 | TF | Fly-By | 092.3 / 095 | 7.3 | - | - | - |
| RNAV1 | LIFY | 532848.3 / 0053000.0 | TF | Fly-By | 092.5 / 095 | 5.0 | A4000 / - | - | - |

NEVRI5P CAT A/B SID RWY16

NEVR5P

| Nav. Spec. | WPT Name | Latitude (N)/ Longitude (W) | Path Term | Fly-By Fly-over | True track / Mag track | Distance (NM) | Upper limit / Lower limit | Speed Limit (kts) | Remarks |
|------------|----------|-----------------------------|-----------|-----------------|------------------------|---------------|---------------------------|-------------------|-------------|
| RNAV1 | RWY16 | - | CA | - | 150.2 / 153 | - | - / A750+ | - | - |
| RNAV1 | OP | 532449.7 / 0060818.1 | DF | Fly-By | - | - | - | - | Turn L , LO |
| RNAV1 | BATED | 532942.8 / 0060642.8 | TF | Fly-By | 011.0 / 013 | 5.0 | - | - | - |
| RNAV1 | ERUDA | 534029.0 / 0061655.0 | TF | Fly-By | 330.7 / 333 | 12.4 | - | - | Turn L |
| RNAV1 | NEVRI | 540406.0 / 0061611.4 | TF | Fly-By | 001.0 / 003 | 23.7 | A4000 / - | - | Turn R |

OLONO2P CAT A/B SID RWY16

OLON2P

| Nav. Spec. | WPT Name | Latitude (N)/ Longitude (W) | Path Term | Fly-By Fly-over | True track / Mag track | Distance (NM) | Upper limit / Lower limit | Speed Limit (kts) | Remarks |
|------------|----------|-----------------------------|-----------|-----------------|------------------------|---------------|---------------------------|-------------------|---------------------|
| RNAV1 | RWY16 | - | CA | - | 150.2 / 153 | - | - / A750+ | - | - |
| RNAV1 | DW001 | 531841.3 / 0060846.5 | CF | Fly-By | 150.2 / 153 | - | - | - | 142° DAP / D8.8 DAP |
| RNAV1 | NEPOD | 525657.2 / 0061029.8 | TF | Fly-By | 182.7 / 185 | 21.8 | - | - | Turn R |
| RNAV1 | OLONO | 524323.1 / 0064644.4 | TF | Fly-By | 238.5 / 241 | 25.8 | A4000 / - | - | Turn R |

ROTEV5P CAT A/B SID RWY16

ROTE5P

| Nav. Spec. | WPT Name | Latitude (N)/ Longitude (W) | Path Term | Fly-By Fly-over | True track / Mag track | Distance (NM) | Upper limit / Lower limit | Speed Limit (kts) | Remarks |
|------------|----------|-----------------------------|-----------|-----------------|------------------------|---------------|---------------------------|-------------------|-------------|
| RNAV1 | RWY16 | - | CA | - | 150.2 / 153 | - | - / A750+ | - | - |
| RNAV1 | OP | 532449.7 / 0060818.1 | DF | Fly-By | - | - | - | - | Turn L , LO |
| RNAV1 | BATED | 532942.8 / 0060642.8 | TF | Fly-By | 011.0 / 013 | 5.0 | - | - | - |
| RNAV1 | ERUDA | 534029.0 / 0061655.0 | TF | Fly-By | 330.7 / 333 | 12.4 | - | - | Turn L |
| RNAV1 | ROTEV | 540143.7 / 0060358.4 | TF | Fly-By | 019.7 / 022 | 22.6 | A4000 / - | - | Turn R |

SUROX5P CAT A/B SID RWY16

SURO5P

| Nav. Spec. | WPT Name | Latitude (N)/ Longitude (W) | Path Term | Fly-By Fly-over | True track / Mag track | Distance (NM) | Upper limit / Lower limit | Speed Limit (kts) | Remarks |
|------------|----------|-----------------------------|-----------|-----------------|------------------------|---------------|---------------------------|-------------------|-------------|
| RNAV1 | RWY16 | - | CA | - | 150.2 / 153 | - | - / A750+ | - | - |
| RNAV1 | OP | 532449.7 / 0060818.1 | DF | Fly-By | - | - | - | - | Turn L , LO |
| RNAV1 | BATED | 532942.8 / 0060642.8 | TF | Fly-By | 011.0 / 013 | 5.0 | - | - | - |
| RNAV1 | ERUDA | 534029.0 / 0061655.0 | TF | Fly-By | 330.7 / 333 | 12.4 | - | - | Turn L |
| RNAV1 | DODIG | 535746.0 / 0062934.0 | TF | Fly-By | 336.7 / 339 | 18.9 | - | - | Turn R |
| RNAV1 | SUROX | 535948.0 / 0065936.5 | TF | Fly-By | 276.8 / 279 | 17.9 | A4000 / - | - | Turn L |