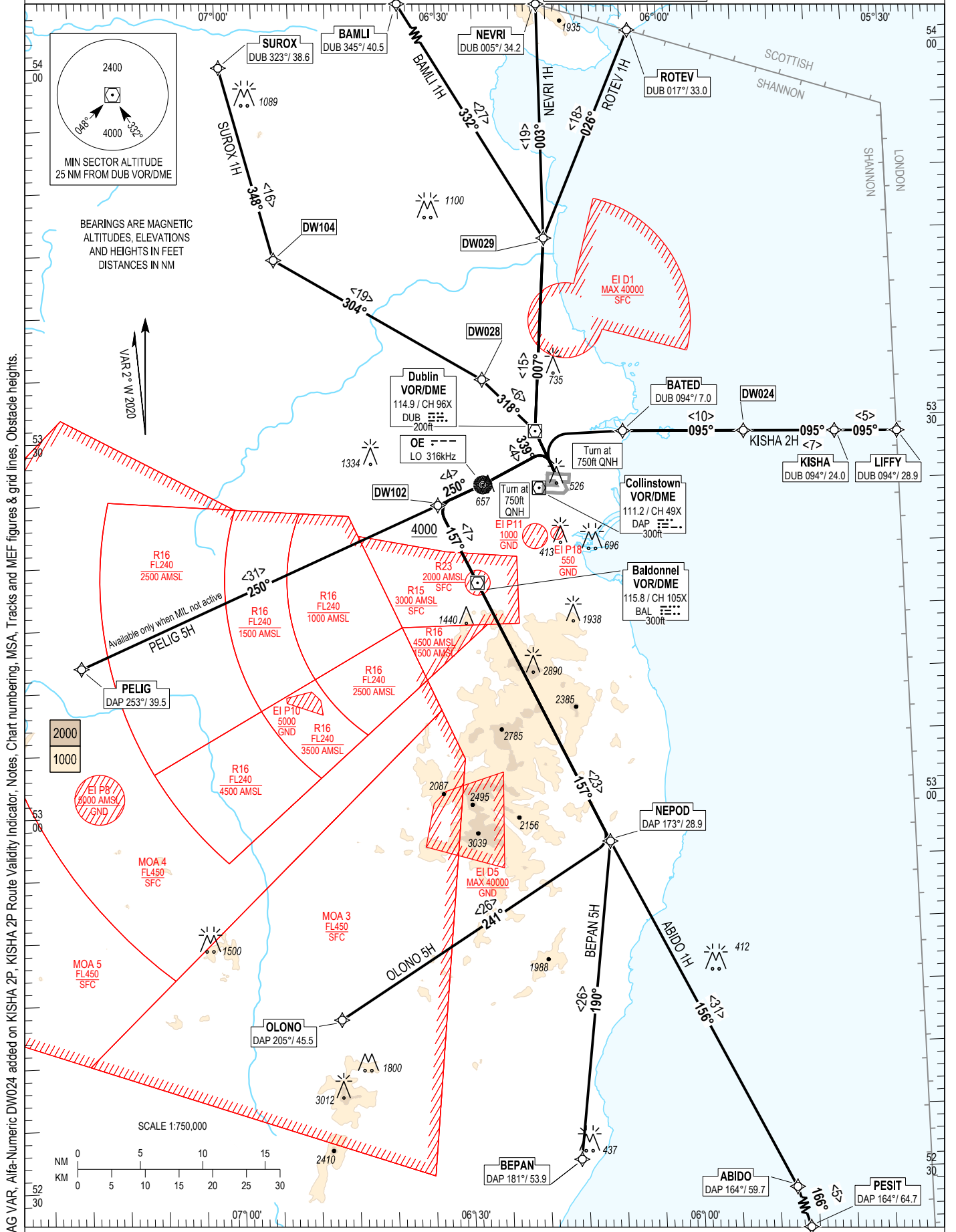


RNAV STANDARD DEPARTURE CHART  
INSTRUMENT (SID) - ICAO

TRANS ALT 5000ft  
TRANS LEVEL by ATC

ATIS TWR	124.530
ACC Lower North	118.600
ACC Lower South	132.580
	120.755

DUBLIN RWY 34, CAT A, B  
KISHA 2H, ABIDO 1H, BEPAN 5H, OLONO 5H, PELIG 5H,  
SUROX 1H, BAMLI 1H, NEVRI 1H, ROTEV 1H.



CHANGE: MAG VAR, Alfa-Numeric DW024 added on KISHA 2P, KISHA 2P Route Validity Indicator, Notes, Chart numbering, MSA, Tracks and MEF figures & grid lines, Obstacle heights.

**NOTES:** 1. Climb gradient 6.6 % (400 ft/NM) (3.3% for obstacle clearance). 2. Close-in obstacles exist. 3. Turn above 750ft QNH (No turns before DER). 4. MAX IAS 250kts below FL100. 5. Integrity check fix available from RADAR. 6. Immediately after take off contact Dublin Departure North or South as appropriate. 7. KISHA SID traffic with a RFL of FL180 or above must be FL180 by BAVUD or GINIS respectively. 8. Aircraft routing to INKUR will be given a SUROX SID and RADAR transition. 9. DME/DME or GNSS navigation required. 10. **WARNING:** Climb to 4000 ft. Do not climb above 4000 ft until instructed by ATC.

**ABIDO1H CAT A/B SID RWY34**

**ABID1H**

Nav. Spec.	WPT Name	Latitude (N)/ Longitude (W)	Path Term	Fly-By Fly-over	True track / Mag track	Distance (NM)	Upper limit / Lower limit (ft)	Speed Limit (kts)	Remarks
RNAV1	-	-	CA	-	336.7 / 339	-	- / A750+	-	-
RNAV1	OE	532548.6 / 0062543.7	DF	Fly-By	-	-	-	-	Turn L , LO
RNAV1	DW102	532417.1 / 0063149.2	TF	Fly-By	247.3 / 250	4.0	- / A4000	-	-
RNAV1	BAL	531759.6 / 0062652.0	TF	Fly-By	154.7 / 157	7.0	-	-	Turn L , VOR
RNAV1	NEPOD	525657.2 / 0061029.8	TF	Fly-By	154.8 / 157	23.3	-	-	-
RNAV1	ABIDO	522843.7 / 0054744.1	TF	Fly-By	153.8 / 156	31.5	-	-	-
RNAV1	PESIT	522356.6 / 0054524.0	TF	Fly-By	163.4 / 166	5.0	-	-	Turn R

**BAMLI1 CAT A/B SID RWY34**

**BAML1H**

Nav. Spec.	WPT Name	Latitude (N)/ Longitude (W)	Path Term	Fly-By Fly-over	True track / Mag track	Distance (NM)	Upper limit / Lower limit (ft)	Speed Limit (kts)	Remarks
RNAV1	DUB	532957.8 / 0061825.6	CF	Fly-By	336.7 / 339	-	-	-	VOR
RNAV1	DW029	534521.0 / 0061621.0	TF	Fly-By	004.6 / 007	15.5	-	-	Turn R
RNAV1	BAMLI	540828.5 / 0063904.0	TF	Fly-By	330.1 / 332	26.8	-	-	Turn L

**BEPAN5H CAT A/B SID RWY34**

**BEPA5H**

Nav. Spec.	WPT Name	Latitude (N)/ Longitude (W)	Path Term	Fly-By Fly-over	True track / Mag track	Distance (NM)	Upper limit / Lower limit (ft)	Speed Limit (kts)	Remarks
RNAV1	-	-	CA	-	336.7 / 339	-	- / A750+	-	-
RNAV1	OE	532548.6 / 0062543.7	DF	Fly-By	-	-	-	-	Turn L , LO
RNAV1	DW102	532417.1 / 0063149.2	TF	Fly-By	247.3 / 250	4.0	- / A4000	-	-
RNAV1	BAL	531759.6 / 0062652.0	TF	Fly-By	154.7 / 157	7.0	-	-	Turn L , VOR
RNAV1	NEPOD	525657.2 / 0061029.8	TF	Fly-By	154.8 / 157	23.3	-	-	-
RNAV1	BEPAN	523136.2 / 0061549.5	TF	Fly-By	187.3 / 190	25.6	-	-	Turn R

**KISHA2H CAT A/B SID RWY34**

**KISH2H**

Nav. Spec.	WPT Name	Latitude (N)/ Longitude (W)	Path Term	Fly-By Fly-over	True track / Mag track	Distance (NM)	Upper limit / Lower limit (ft)	Speed Limit (kts)	Remarks
RNAV1	-	-	CA	-	336.7 / 339	-	- / A750+	-	-
RNAV1	BATED	532942.8 / 0060642.8	DF	Fly-By	-	-	-	-	Turn R
RNAV1	DW024	532920.2 / 0055032.5	TF	Fly-By	092.1 / 095	9.7	-	-	-
RNAV1	KISHA	532901.7 / 0053821.6	TF	Fly-By	092.3 / 095	7.3	-	-	-
RNAV1	LIFY	532848.3 / 0053000.0	TF	Fly-By	092.5 / 095	5.0	-	-	-

**NEVRI1H CAT A/B SID RWY34**

**NEVR1H**

Nav. Spec.	WPT Name	Latitude (N)/ Longitude (W)	Path Term	Fly-By Fly-over	True track / Mag track	Distance (NM)	Upper limit / Lower limit (ft)	Speed Limit (kts)	Remarks
RNAV1	DUB	532957.8 / 0061825.6	CF	Fly-By	336.7 / 339	-	-	-	VOR
RNAV1	DW029	534521.0 / 0061621.0	TF	Fly-By	004.6 / 007	15.5	-	-	Turn R
RNAV1	NEVRI	540406.0 / 0061611.4	TF	Fly-By	000.3 / 003	18.8	-	-	Turn L

**OLONO5H CAT A/B SID RWY34**

**OLON5H**

Nav. Spec.	WPT Name	Latitude (N)/ Longitude (W)	Path Term	Fly-By Fly-over	True track / Mag track	Distance (NM)	Upper limit / Lower limit (ft)	Speed Limit (kts)	Remarks
RNAV1	-	-	CA	-	336.7 / 339	-	- / A750+	-	-
RNAV1	OE	532548.6 / 0062543.7	DF	Fly-By	-	-	-	-	Turn L , LO
RNAV1	DW102	532417.1 / 0063149.2	TF	Fly-By	247.3 / 250	4.0	- / A4000	-	-
RNAV1	BAL	531759.6 / 0062652.0	TF	Fly-By	154.7 / 157	7.0	-	-	Turn L , VOR
RNAV1	NEPOD	525657.2 / 0061029.8	TF	Fly-By	154.8 / 157	23.3	-	-	-
RNAV1	OLONO	524323.1 / 0064644.4	TF	Fly-By	238.5 / 241	25.8	-	-	Turn R

**PELIG5H CAT A/B SID RWY34**

**PELI5H**

Nav. Spec.	WPT Name	Latitude (N)/ Longitude (W)	Path Term	Fly-By Fly-over	True track / Mag track	Distance (NM)	Upper limit / Lower limit (ft)	Speed Limit (kts)	Remarks
RNAV1	-	-	CA	-	336.7 / 339	-	- / A750+	-	-
RNAV1	OE	532548.6 / 0062543.7	DF	Fly-By	-	-	-	-	Turn L , LO
RNAV1	DW102	532417.1 / 0063149.2	TF	Fly-By	247.3 / 250	4.0	- / A4000	-	-
RNAV1	PELIG	531158.5 / 0072000.0	TF	Fly-By	247.2 / 250	31.4	-	-	-

**ROTEV1H CAT A/B SID RWY34**

**ROTE1H**

Nav. Spec.	WPT Name	Latitude (N)/ Longitude (W)	Path Term	Fly-By Fly-over	True track / Mag track	Distance (NM)	Upper limit / Lower limit (ft)	Speed Limit (kts)	Remarks
RNAV1	DUB	532957.8 / 0061825.6	CF	Fly-By	336.7 / 339	-	-	-	VOR
RNAV1	DW029	534521.0 / 0061621.0	TF	Fly-By	004.6 / 007	15.5	-	-	Turn R
RNAV1	ROTEV	540143.7 / 0060358.4	TF	Fly-By	024.0 / 026	18.0	-	-	Turn R

**SUROX1H CAT A/B SID RWY34**

**SURO1H**

Nav. Spec.	WPT Name	Latitude (N)/ Longitude (W)	Path Term	Fly-By Fly-over	True track / Mag track	Distance (NM)	Upper limit / Lower limit (ft)	Speed Limit (kts)	Remarks
RNAV1	DUB	532957.8 / 0061825.6	CF	Fly-By	336.7 / 339	-	-	-	VOR
RNAV1	DW028	533413.0 / 0062520.0	TF	Fly-By	316.0 / 318	5.9	-	-	Turn L
RNAV1	DW104	534417.9 / 0065252.9	TF	Fly-By	301.8 / 304	19.3	-	-	Turn L
RNAV1	SUROX	535948.0 / 0065936.5	TF	Fly-By	345.7 / 348	16.0	-	-	Turn R